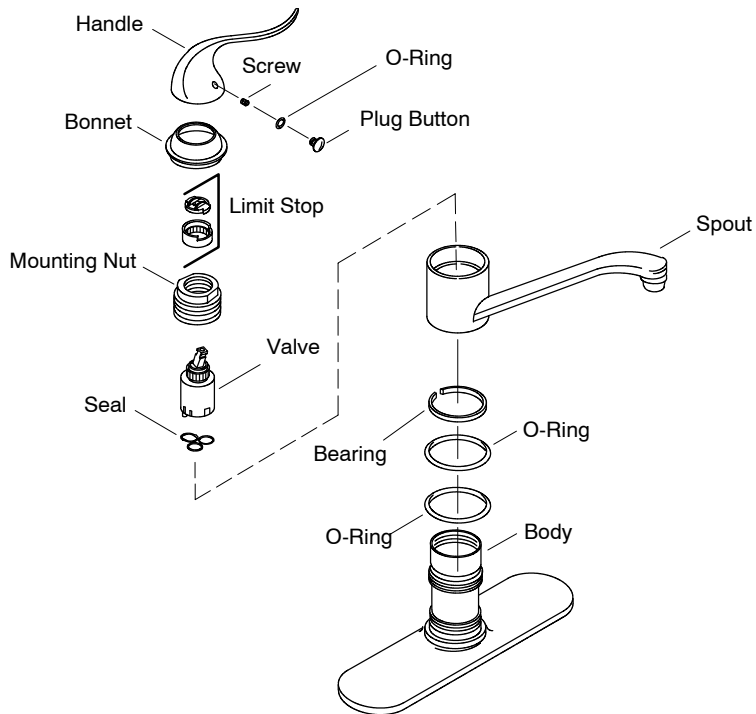


SERVICE KIT INSTRUCTIONS



## Spout Removal

- Turn off the water supply to the faucet.
- Pop out the plug button and turn the setscrew counterclockwise to remove.
- Pull the handle up and off the valve stem.
- Rotate the bonnet counterclockwise to remove it from the valve.
- Note the location of the limit stop. Pull the limit stop off the valve stem.
- Pull the old valve off the spout base. Ensure that the old seals stay in the bottom of the valve and not in the faucet body. There are new seals inside the new valve.
- Hold the end of the spout and pull up to remove the spout.

## Spout Assembly

- Use the silicone lubricant provided to lubricate the new O-rings and bearings.
- Put the new, lubricated O-rings and bearings on the brass body in the same location as the old ones.
- Slide the spout back onto the body.
- Insert the valve back inside the body.
- Twist the mounting nut and bonnet clockwise onto the body. Finger tighten the mounting nut and then 1/8 to 1/4 of a turn with a wrench. Finger tighten the bonnet.
- Place the limit stop on the valve stem.
- Align the underside of the handle with the valve stem and gently slide the handle on the valve stem.
- Twist the setscrew clockwise into the handle and tighten the handle to the valve.
- Install the plug button.
- Turn on the water supply and check for leaks.
- Check the faucet operation.

**NOTE:** If the water temperature is reversed, the valve is positioned incorrectly in the spout body. Remove the valve and reposition it in the spout body.

USA: 1-800-4-KOHLER  
Canada: 1-800-964-5590  
Mexico: 001-877-680-1310  
kohler.com  
© 2004 Kohler Co.

1036748-9-A