

BEFORE YOU BEGIN

开始之前

- Congratulation on your purchase of this high quality Bathroom Accessory. Before proceeding with the installation, please carefully read this installation instruction in order to ensure proper care and assembly of this accessory.
- Please keep this installation instruction for future reference.
- 首先恭喜您购买到了高档的卫浴产品，为了使您正确保护和组装产品，在您安装之前请详细阅读此说明书。
- 请保留此说明书以备参考。



Prior to drilling into walls, check there are no hidden electrical wires, cables or water supply pipes with the aid of an electronic detector. If you use power tools do not forget:

1. Wear eye protection.
2. Unplug equipment after use.



警示：在钻孔之前，请借助电子探测仪确认墙内是否有电源线，通讯光缆或者水管之类的东西。如果使用电钻的话请勿忘记以下两点：

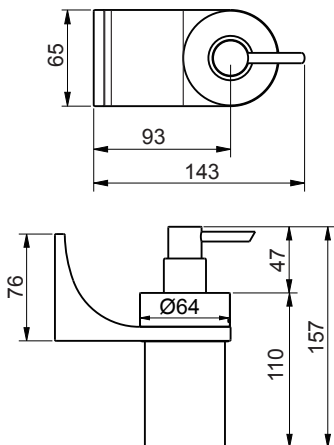
1. 请戴上防护镜。
2. 用完设备后关掉电源。

ROUGHING-IN

尺寸图

Reference Value
参考值

UNIT: mm
单位：毫米



Kohler reserves the right to change marked dimensions without prior notice.
科勒公司保留随时变更图中标示尺寸的权利，无需另行通知。

KOHLER CHINA INVESTMENT CO., LTD NO.158, JIANG CHANG SAN ROAD,
JING'AN DISTRICT, SHANGHAI, PRC POST CODE: 200436
科勒(中国)投资有限公司 上海市静安区江场三路158号 邮编: 200436

INSTALLATION

安装步骤

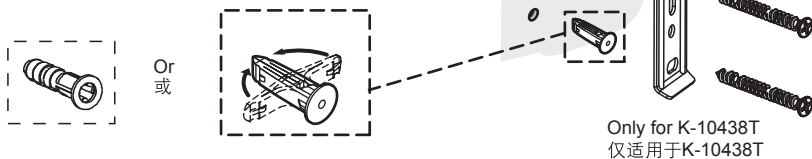
1. Put the wall plate where the soap dispenser is to be placed, with the vertical hole up and the horizontal hole down. Mark the two mounting holes after the wall plate is adjusted to the level position.

1. 在希望安装皂液器的位置放置挂墙支架，竖直孔位置在上，水平孔位置在下。调整水平后，标记出两个安装孔的位置。



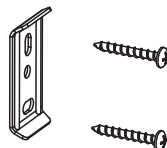
2. Drill the marked mounting holes with a 6mm bit and insert wall plugs.

2. 在1中标记的位置上，用6毫米的钻头在墙上钻孔，并塞进壁塞。



3. Fix the wall plate on the wall with screws, with the vertical hole up and the horizontal hole down.

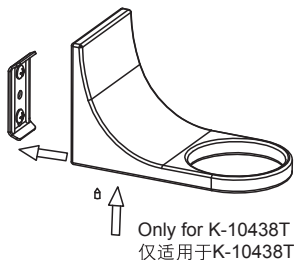
3. 用螺钉将挂墙支架固定在墙上，竖直孔位置在上，水平孔位置在下。



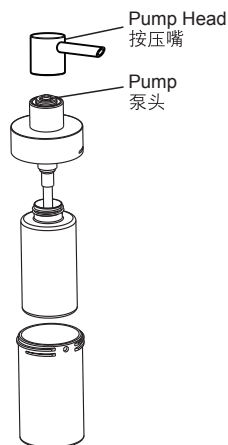
Only for K-10438T
仅适用于K-10438T

4. Fix the bracket of the soap dispenser onto the wall plate.

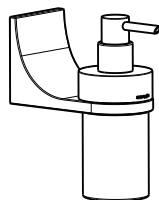
4. 将皂液器底座固定在挂墙支架上。



5. Unscrew the metal outer bottle and the plastic inner bottle of the soap dispenser to fill the liquid soap. Then screw tight the two bottles again. Push the pump head into the pump.
5. 旋开皂液器的金属外瓶和塑料内瓶，添加皂液，重新旋紧塑料内瓶和金属外瓶。将按压嘴压入泵头中。



6. Put the soap dispenser onto the bracket and it is ready for use.
6. 将皂液器放到底座上就可以使用本产品了。



CARING FOR YOUR PRODUCTS

保养须知

The accessories should be washed with warm water and a soft cloth or sponge. Do not use abrasive cleaners or cleaners containing bleach.

为了更好地保养本品，请您用温水和软毛巾(或海绵)擦拭，含有腐蚀性或漂白剂的洗洁剂对本品有害。