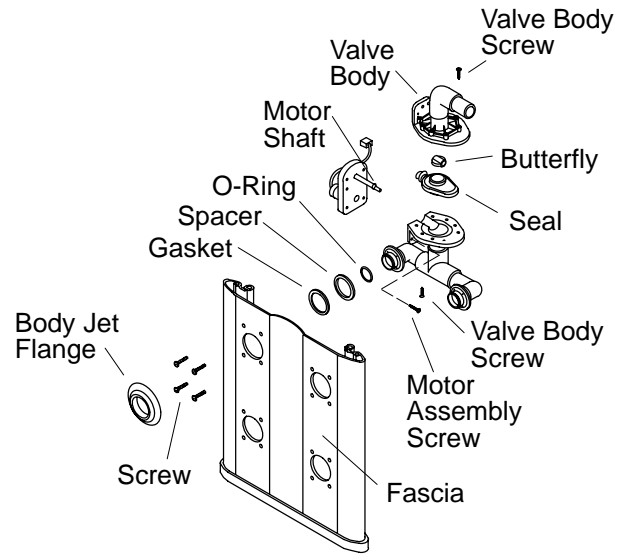


1. Turn off the power to the BodySpa, remove two 3/8" tower bolts, and pivot the tower open.
2. Disconnect the harness union nut. Disconnect the wire connectors from the valves.
3. Remove the remaining 3/8" tower bolt from the tower, and lift the tower out of the mounting frame.
4. Carefully pry off and save the Body Jet flanges for the array (pair) being serviced. Remove the four screws that secure each Body Jet to the fascia. Retain the screws.
5. Use a flexible screwdriver to remove the two motor assembly screws from the adapter plate. Pull the motor shaft out of the valve body. If the motor assembly is all that requires replacement, do so at this time and proceed to Step 9. To replace the butterfly and seal, proceed to Step 6.
6. Remove the two adapter plate screws, and remove the adapter plate. Use a flexible screwdriver to remove eight valve body screws, four on each side. Separate the valve body halves, and remove and discard the seal and butterfly.
7. Apply a high-quality silicone lubricant to the new seal, and install the seal into one of the valve body halves. Install the new butterfly. Reassemble the valve body halves, and secure with eight screws. Do not overtighten.
8. Install the adapter plate, and secure with two screws.
9. Slide the motor shaft into the hole in the valve body. Slowly rotate the motor assembly back and forth until the motor shaft flats line up with those in the valve body hole. Do not force the parts together.



10. Press the motor assembly against the valve body, and secure with two screws into the adapter plate. Tighten securely.
11. Secure the Body Jets to the fascia with four screws in each.
12. Press the flanges securely into the Body Jets.
13. Re-install the tower to the mounting frame, and make all connections. Run the BodySpa, and check for leaks.