

Operational Principle

KDF55 is a filtration material imported from the United States. It removes chlorine, heavy metals from water. KDF water filtration media utilize the principle of electrochemical oxidation reduction, commonly known as the redox process, to eliminate a vast number of water contaminants.

POWER-PHOS are a high-tech water treatment product which can prevent corrosion and inhibit the formation of scale in a water supply system.

NOTES

- 1 Observe local plumbing codes.
- 2 Flush the water supply pipes thoroughly to remove debris.
- 3 Before using filtered water for the first time, run the water with the handle wide open to remove debris in pipes and the filter, until the water is clear and clean.
- 4 For proper performance of the filter, the water pressure should be between 0.1MPa(1 bar) and 0.8MPa(8 bar). The water temperature should be between 3°C and 80°C. The ambient temperature should be between 0°C and 49°C.
- 5 Water purification capacity is 30,000L.
- 6 To ensure water purification efficiency, the filter should be replaced periodically. Generally, the filter replacement cycle is every 6 months.
- 7 If the filter is unused for a long time, rinse the filter completely to ensure the water quality.
- 8 If hose is not long enough, we prepared a 75cm smooth hose for your convenience(Sku no: 1271217-CP). You could buy it in Kohler Tmall store.

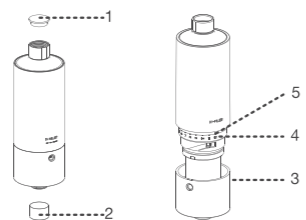
OPERATION INSTRUCTION

How to Install The Filter

1 Unscrew the cap(1)from filter, Pull out the cap(2)from filter, Unscrew the filter cap(3), adjust the timer(4), align the month on the timer with the mark(5)on the cap.

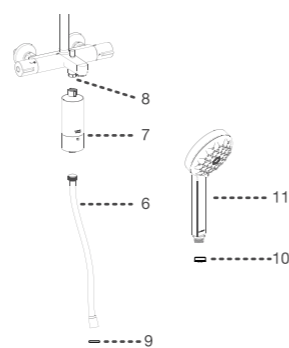
(NOTE: The number indicates the month that the filter needs to be replaced.)

Align the grey mark in the filter cap with the grey mark on the filter. Push the filter cap and filter upwards while turning it 30 degrees clockwise, until it clicks.



2 Unscrew the hose(6)from the faucet. Flush the water supply thoroughly to remove debris. Shut off the faucet. Connect the filter kit(7)to the faucet connector(8)and tighten with a wrench. Attach the hose to the filter bottom.

Put the screen washer(9)into the hose, and install the regulator(10)into the handspray(11)into the hose.

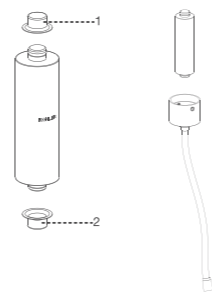


How To Replace The Filter

3 Turn off the faucet , turn the filter cap 30 degrees counter-clockwise and remove the filter cap and filter.



4 Unscrew the protection cap (1) & (2) from replacement filter. Replace the filter when needed . Insert a new filter, and discard the used one. Adjust the number on the timer, and reinstall it as step1.



CLEANING INSTRUCTIONS

All Finishes:

Clean the finish with mild soap and warm water. Wipe the entire surface completely dry with clean, soft cloth. Many cleaners such as ammonia, chlorine and toilet cleaners may contain chemicals which could adversely affect the finish and are not recommended for cleaning this product.

Do not use abrasive cleaners or solvents on Kohler faucets and fittings.

工作原理

随心雨淋浴净化器的健康秘密藏在它的滤芯里，它的主要成分是KDF55以及净水魔珠。

KDF55*可以去除水中的重金属离子，当自来水遇到了KDF55*，就会发生一系列电化学氧化还原反应，把这些本来溶解在水里的重金属离子变成不溶于水的成分，然后阻隔在滤料表面。此外，将水中的氧化氯（俗称余氯）氧化还原成对人体无害的离子。

KDF55*：获得美国国家卫生基金会（NSF）认证，可以有效去除水中余氯。

配方和生产工艺都来自美国的净水魔珠*，可以在水中有效地抑制并干扰碳酸钙晶体的正常生长，让其无法沉积，从而发挥抑制水垢生成的作用。

! 注意事项

- 1 遵守当地管路安装条例。
- 2 一定要先彻底冲洗供水管以清除管道中的杂质。
- 3 对于首次使用过滤水，建议您将水流开到最大程度，用大流量的水来清洗管道和净化器，直至水变得清澈干净。
- 4 为了确保设备正常运转，建议进水压力0.1MPa（1 bar）~0.8MPa（8 bar），温度3°C~80°C，环境温度 0°C~49°C。
- 5 净化器的净水处理量为 30000L。
- 6 滤芯更换周期：6个月。要定期更换滤芯，以确保水处理的效果。
- 7 如果长期搁置不用，当恢复使用时，要充分用水冲洗。
- 8 如果您家中的软管不够长，我们为您准备了一根75cm的防缠绕软管（产品型号：1271217-CP）。您可以到科勒天猫旗舰店购买。

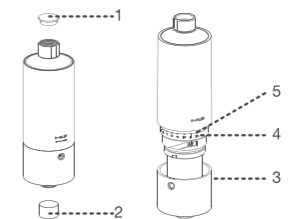
安装步骤

如何安装净化器

1 将保护盖（1）从净化器上端旋下来，将保护盖（2）从净化器下端拔出来，将净化器盖（3）拧下，调整数字计时环（4），使要调整的数字对齐净化器外壳上的标志（5）。（注意：数字表示要更换滤芯的月份。）

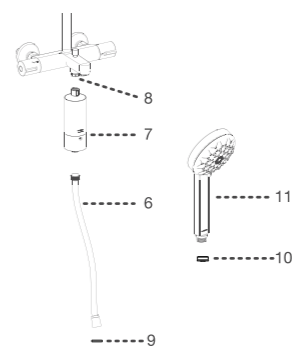
将净化器盖上的灰色标志对齐灰色标志，往上推净化器盖和滤芯的同时顺时针旋转30°，直至听到“咔”的一声。

净水魔珠*：主要成分为洁磷晶。获得中国卫生部的环境与健康测试和生物安全测试。



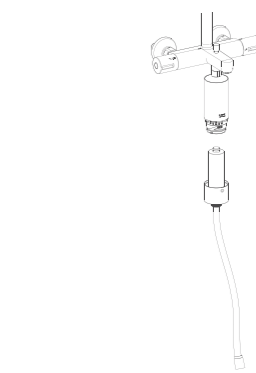
2 将软管（6）从龙头接头上拧下来。打开龙头约一分钟冲洗掉杂质，关闭龙头。

将净化器组件（7）连接到接头（8）上，并拧紧。再将软管连接到净化器底部。将垫片（9）放到软管内，限流器（10）放到花洒（11）内，连接花洒和软管。

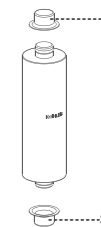


如何更换滤芯

3 当滤芯需要更换时，关闭龙头，将净化器盖逆时针旋转30°，向下拔出净化器盖和滤芯。



4 把新滤芯的保护盖（1）和（2）分别从滤芯两端拔出。拔出滤芯，更换新的滤芯。再按步骤1中的方法调整数字计时环（4）然后装回净化器。



清洗说明

适用于所有加工处理过的表面：

以中性肥皂水清洗镀层表面，再以干净软布彻底擦干整个表面，许多清洁剂，比如氨水、去污粉及洁厕灵等，会对电镀表面造成伤害，切忌使用。

有磨蚀性的清洁用具或清洁剂也不可用于科勒牌的水龙头及其配件上。

KOHLER

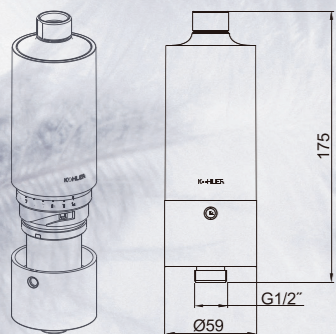
水之纯净，一触倾心

我们尽可能地还原水的纯净，全新推出淋浴时的水质净化方案，科勒EXHALE随心雨淋浴净化器，有效去除水中的杂质、余氯*、重金属*，为肌肤和秀发带来细腻呵护。让您体验纯净沐浴后的清新之美。

PURE BLISS

Introducing the new Exhale shower filter that lets you experience the purity of water while you shower. It cares for your skin and hair by getting rid of chlorine, heavy metals and other harmful substances.

安装尺寸 ROUGH-IN DIMENSIONS



余氯*：采用滤料KDF55，获得美国国家卫生基金会（NSF）认证，可以有效去除水中余氯。

重金属*：采用滤料KDF55，获得美国国家卫生基金会（NSF）认证，可去除水中铅、汞等可溶性重金属离子。

设计灵感

我们在大自然中，探寻美的初源，模拟自然界水的万千形态，冰的晶莹剔透，雪的纯净无瑕，水的涟漪荡漾，将自然的外衣包裹花洒外观，感受如水滴般莹润的手感，如钻石般的精致与奢华。

DESIGN STORY

When water is first created in nature, it is crystal clear. It is nature's most valuable jewel, and it is an essential foundation of beauty. The Exhale shower filter represents water in its purest form and feel, bringing the finest elegance to your bathroom.

有效净化
纯净清新

PURIFIED WATER
PROTECTS YOUR
DELICATE SKIN
AND HAIR



内含KDF55能有效净化水质，去除水中杂质、余氯*、重金属*，让淋浴回归自然。

内含净水魔球，抑制水垢生成。

The Exhale shower filter transforms your water into the nature's clearest water by removing impure materials such as heavy metals, rust, silt and chlorine.

It also reduces scale build up in your shower water.

精致小巧

SLIM AND
COMPACT



适配科勒淋浴龙头
Works with all Kohler
shower products

优雅简约

ELEGANT
DESIGN

完美契合您的家居风格

Goes with every
bathroom décor

贴心提醒

INTUITIVE
REMINDER

贴心直观的提醒设计，便捷记录滤芯安装使用时间，帮助及时更换。
The 12 numbers represent the 12 months of a year. You can set the start or end month number to record the filter lifetime

随心易用

SIMPLE
AND EASY

广泛兼容科勒淋浴产品，安装简易，无需额外工具，即装即用，更换滤芯也同样便捷。

The simple and elegant design matches all Kohler shower products. The filter is easy to install and replace filter without any tool and ready to use immediately after installation.

有效净化，纯净清新
抑制水垢，安心使用
精致小巧，优雅简约
贴心提醒，随心易用

Purified water
Reduces scale
Slim and compact design
Intuitive reminders

KOHLER

exhale
随心雨淋浴净化器
R72914T-CP EXHALE SHOWER FILTER

安装说明书

安装之前

所有的资料是按最新发布的产品资料编写而成。科勒公司保留任何时候不经通知即可改变产品特性、包装或产品可供类型的权利。

说明书包括重要的安装、保养及清洁方面的内容，请把这些资料交给用户阅读。

INSTALLATION INSTRUCTIONS

BEFORE YOU BEGIN

All information is based on the latest product information available at the time of publication. Kohler Co. reserves the right to make changes in product characteristics, packaging, or availability at any time without notice.

Please leave these instructions for the consumer. They contain important information.

科勒 **exhale**[™]
随心雨淋浴净化器
EXHALE SHOWER FILTER

