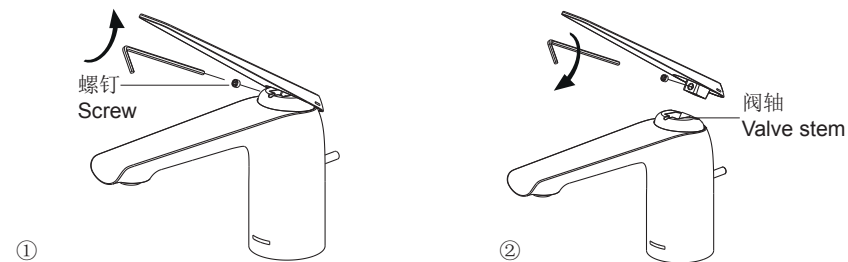


①抬起把手，用六角扳手旋松把手里面的螺钉。拔下把手。
Lift the handle, loosen the screw in the handle by hex wrench. Remove the handle.

②将新把手装到阀轴上，旋紧把手里面的螺钉，检查安装。
Install the new handle onto the valve stem, tighten the screw in the handle. Check it.

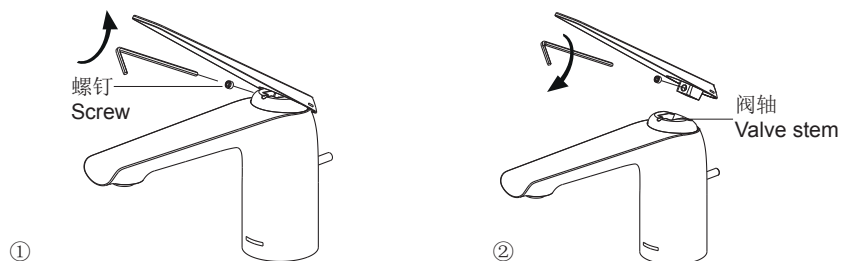
1305572-A



①抬起把手，用六角扳手旋松把手里面的螺钉。拔下把手。
Lift the handle, loosen the screw in the handle by hex wrench. Remove the handle.

②将新把手装到阀轴上，旋紧把手里面的螺钉，检查安装。
Install the new handle onto the valve stem, tighten the screw in the handle. Check it.

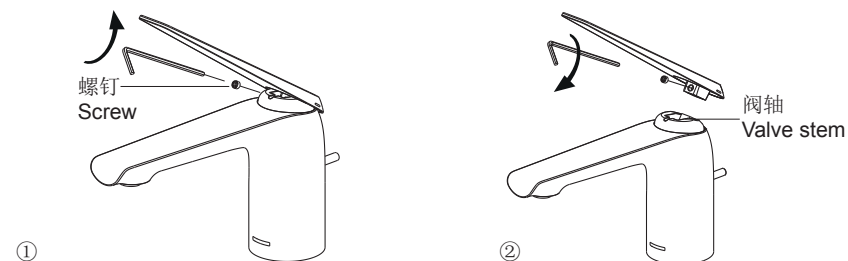
1305572-A



①抬起把手，用六角扳手旋松把手里面的螺钉。拔下把手。
Lift the handle, loosen the screw in the handle by hex wrench. Remove the handle.

②将新把手装到阀轴上，旋紧把手里面的螺钉，检查安装。
Install the new handle onto the valve stem, tighten the screw in the handle. Check it.

1305572-A



①抬起把手，用六角扳手旋松把手里面的螺钉。拔下把手。
Lift the handle, loosen the screw in the handle by hex wrench. Remove the handle.

②将新把手装到阀轴上，旋紧把手里面的螺钉，检查安装。
Install the new handle onto the valve stem, tighten the screw in the handle. Check it.

1305572-A