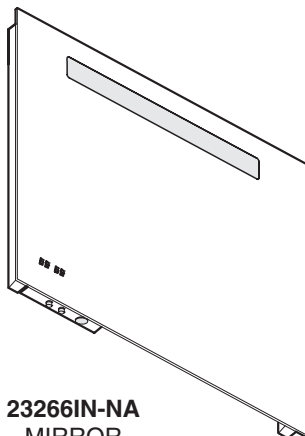
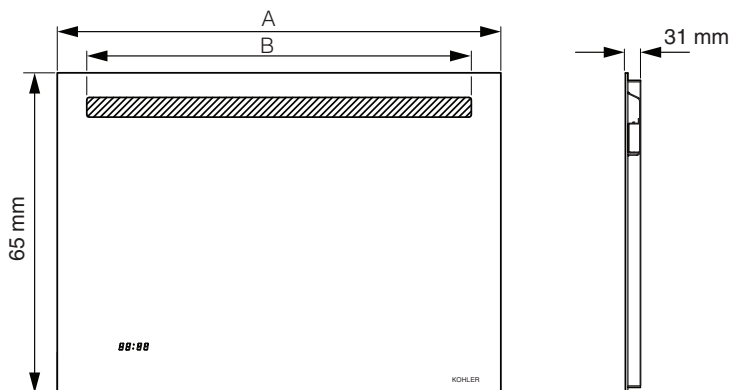


23265IN-NA
MIRROR
600 mm (23-5/8")



23266IN-NA
MIRROR
900 mm (35-7/16")

PRODUCT DIMENSIONS



Codes	FOREFRONT-600	FOREFRONT-900
A	23-5/8" (600 mm)	35-7/16" (900 mm)
B	18-7/8" (480 mm)	30-11/16" (780 mm)

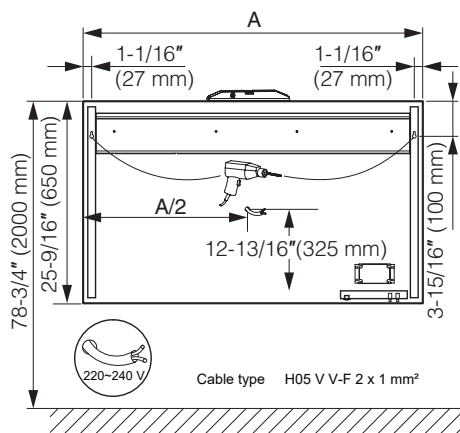
All dimensions are in Inch (mm).

WARRANTY

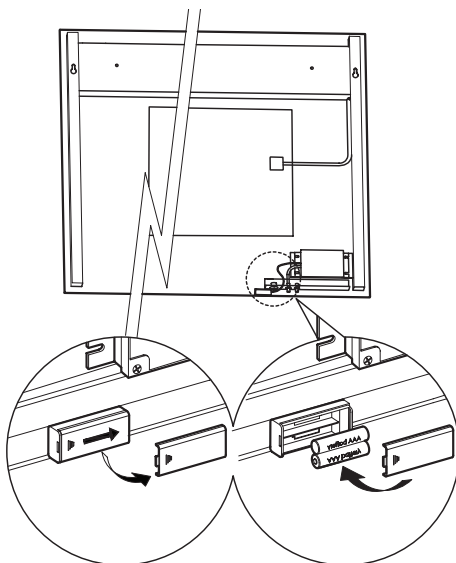
This product is covered under the **KOHLER® India Bathroom Furniture Limited Warranty**, found at kohler.co.in/warranty.

INSTALLATION INSTRUCTION

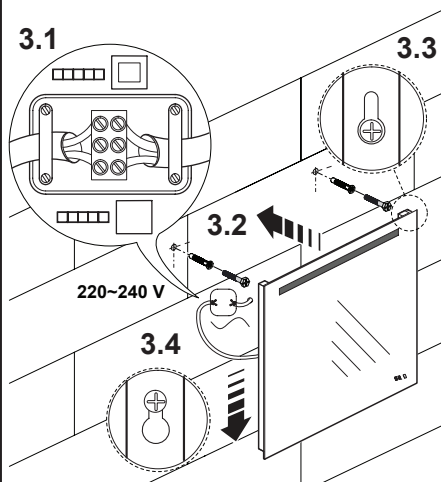
- 1 Location marking for mounting mirror on wall.



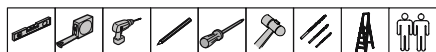
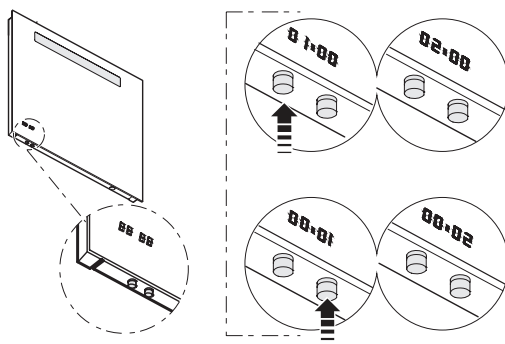
- 2 Insert two AAA battery for digital clock at the specified location as shown in image.



- 3 Make electrical connection as shown in image and mount mirror on the specified screws.



- 4 Adjust the digital clock time from the switch provided.



USER MAINTENANCE



Warning! Risk of product damage.

1. Many cleansers contain abrasive and chemical substance which is not suitable for cleaning stainless steel, enamel, plating or plastic products. You may use mild cleansers or soaps to clean the surfaces. Wipe any splashes of cleaner solutions from the surface with clean soft cloth.
2. Maintain ventilation in the bathroom and separate the dry area from the damp one if conditions permit. Try to open the door and windows of the bathroom and maintain good ventilation.
3. Kohler mirrored cabinet are dealt with strict procedures for damp-proof. Whose good damp-proof function ensures good performance even in bathroom of huge humidity. Yet do not splash and pour water directly on the mirrored cabinet. Make sure that the bathroom is not over damp and wipe any splashes from surfaces immediately.
4. Maintenance of door board: Clean and wipe door board regularly, and wipe the condensation vapor with dry and soft cloth.
5. The mirrored cabinet door and interior are constructed of mirror and aluminum. Use only a damp cloth to clean. Spray the cloth, not the mirror when cleaning. Mirrors are damaged by the use of ammonia or vinegar based cleaners. Rubbing alcohol can be used for stubborn stains.
6. Use no abrasive cleansers on any part of the mirrored cabinet.
7. The black frame should be cleaned with a damp cloth only.

