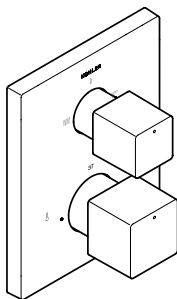


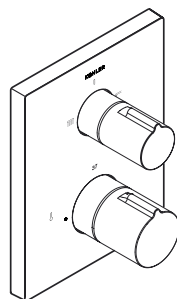
20741IN-9FP-**

BATH AND SHOWER ROUND
TRIM



20742IN-9FP-**

BATH AND SHOWER SQUARE
TRIM

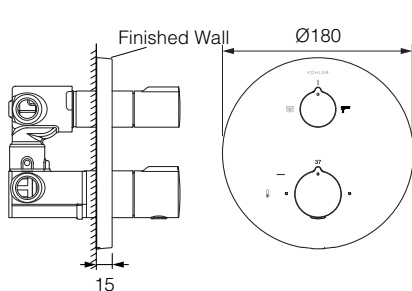


24431IN-9FP-**

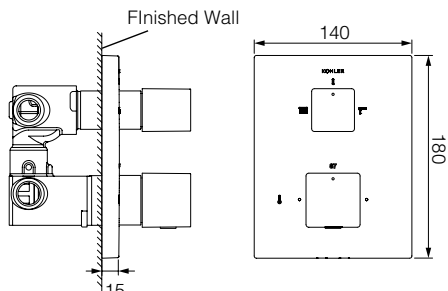
BATH AND SHOWER ROUND
TRIM WITH SQUARE
PLATE

NOTE: MUST BE INSTALLED UNDER SUPERVISION OF KOHLER'S TECHNICAL ASSOCIATE (KTA).

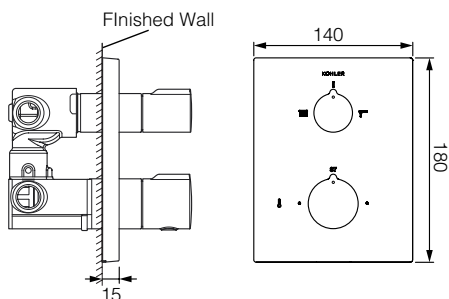
ROUGH-IN (in mm)



20741IN-9FP-**



20742IN-9FP-**



24431IN-9FP-**

PRESSURE AND HOT INLET TEMPERATURE



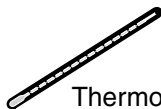
P (Bar) 0.5 < 3 < 5.5



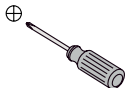
T (°C) < 65



TOOLS REQUIRED

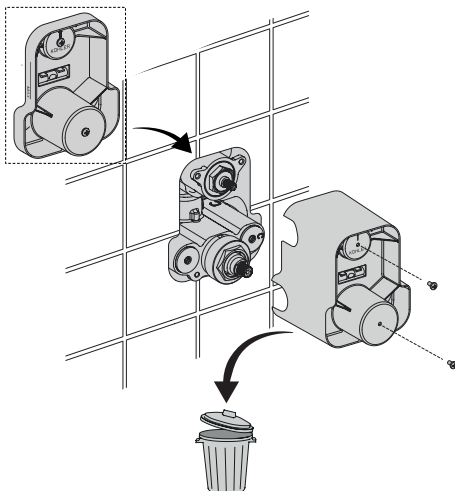


Thermometer

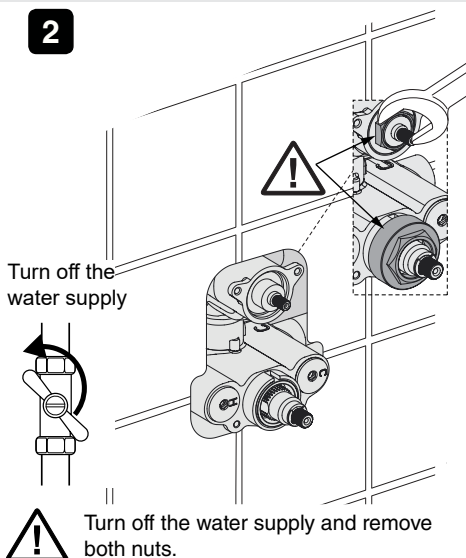


INSTALLATION INSTRUCTIONS

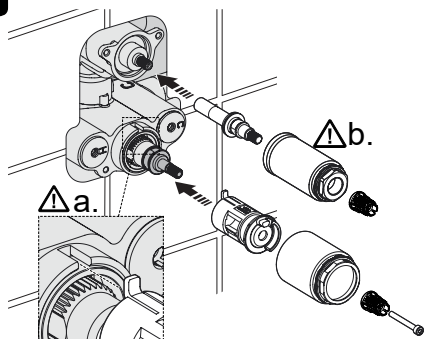
- 1 Remove the protective cover.



- 2

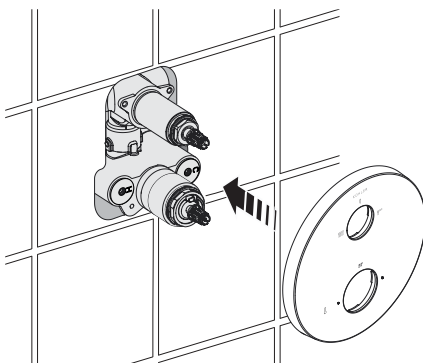


- 3

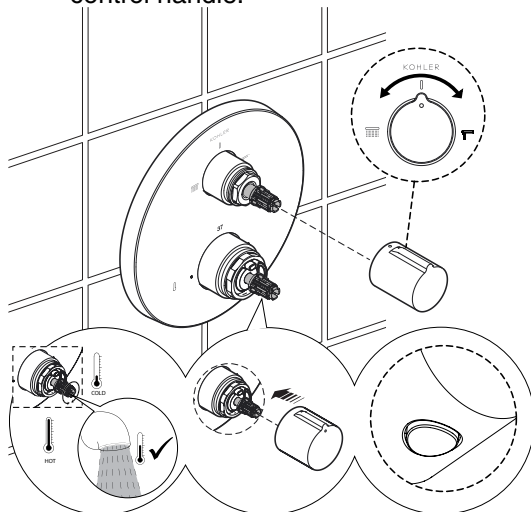


- 4

- Mount the faceplate.



5 Install the diverter and temperature control handle.



Ensure the knob is in upright position.

NOTE:

The thermostatic valve cartridge to be calibrated for a shower temperature of approximately 37-38°C.

1. Turn ON the water supply.
2. Turn ON the electrical supply to the water heater. Wait until the water is full hot in the heater tank.

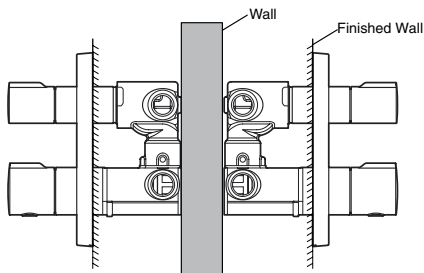
Caution! Scalding hot water may flow from the faucet now as per the heater settings. Do not allow body parts to get in contact with water at this moment.

3. Turn the spline adapter fully counterclockwise. The spline adapter is now in the full hot position. Allow the water to run for several minutes to stabilize the water supply temperature.
4. Position a thermometer in the water stream to check the temperature of the hot water.
5. Turn the spline adapter manually (clockwise to decrease the temperature and counterclockwise to increase) and check the temperature until getting 37°C. Once 37°C reached, **do not turn any further** This is the shower temperature position.
6. Install the temperature control handle to the spline adapter. Make sure the indicator dot is in the middle upright position and the temperature safety stop button is downward.

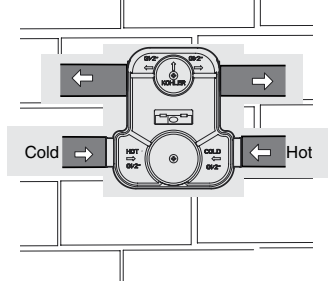
FOR REVERES (HOT AND COLD) OR BACK TO BACK INSTALLATION

1

Back to back installation.

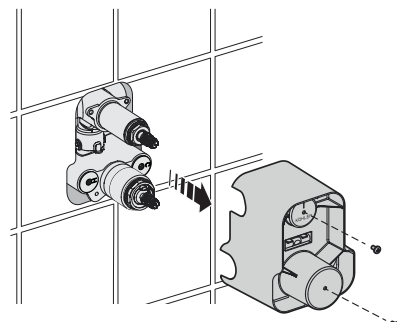


Reverse hot and cold connection.



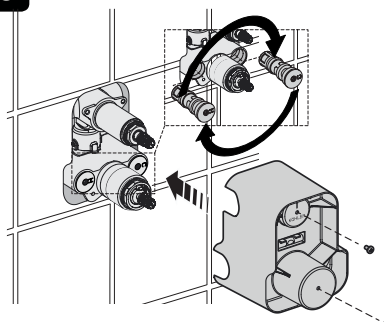
2

Remove the faceplate.

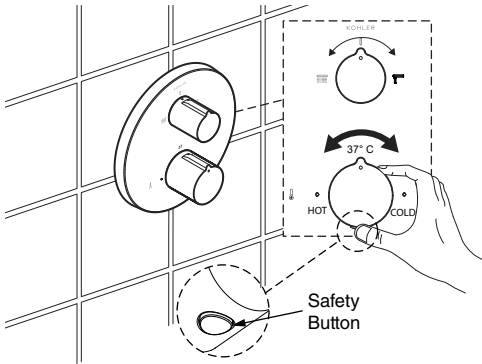


3

Exchange the filter as per supply.



OPERATING INSTRUCTIONS



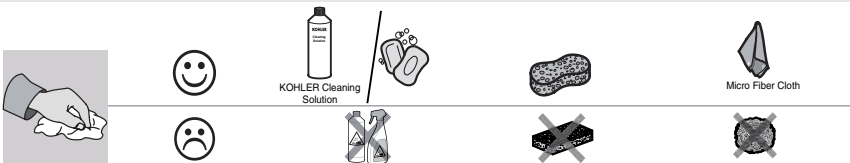
Diverter handle

Turn the diverter handle to select the water outlet. When the handle marking align with the off position water shut off.

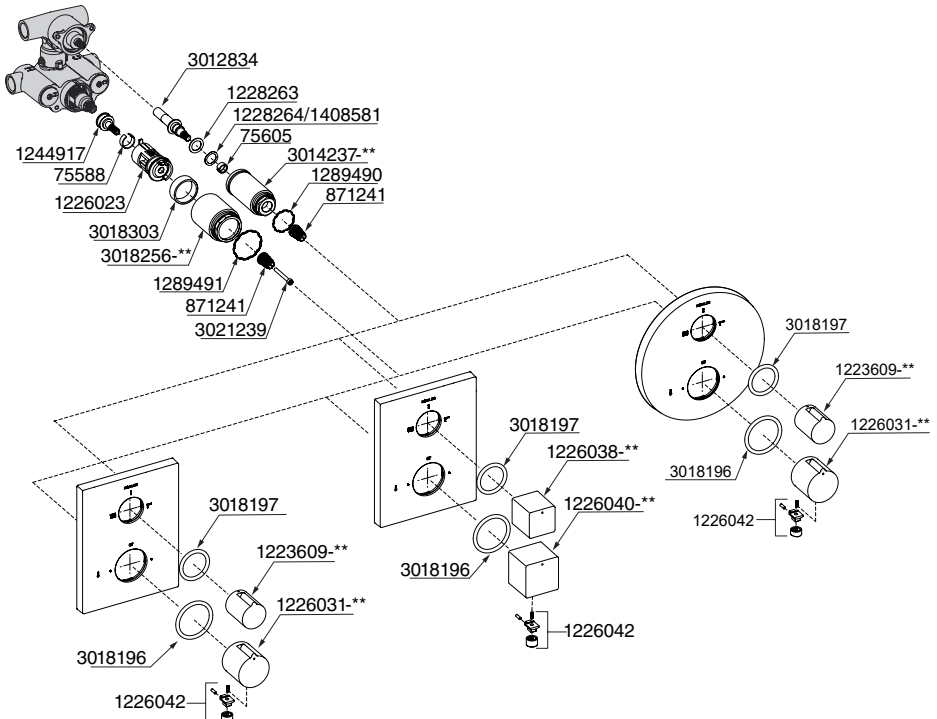
Temperature Control

For safety reasons, a temperature stop limits the outlet temperature to 37°C. To get a higher temperature, press the button at the bottom of the temperature control and continue turning counterclockwise.

CLEANING INSTRUCTIONS



SERVICE PARTS



******-Color code must be specified when ordering.