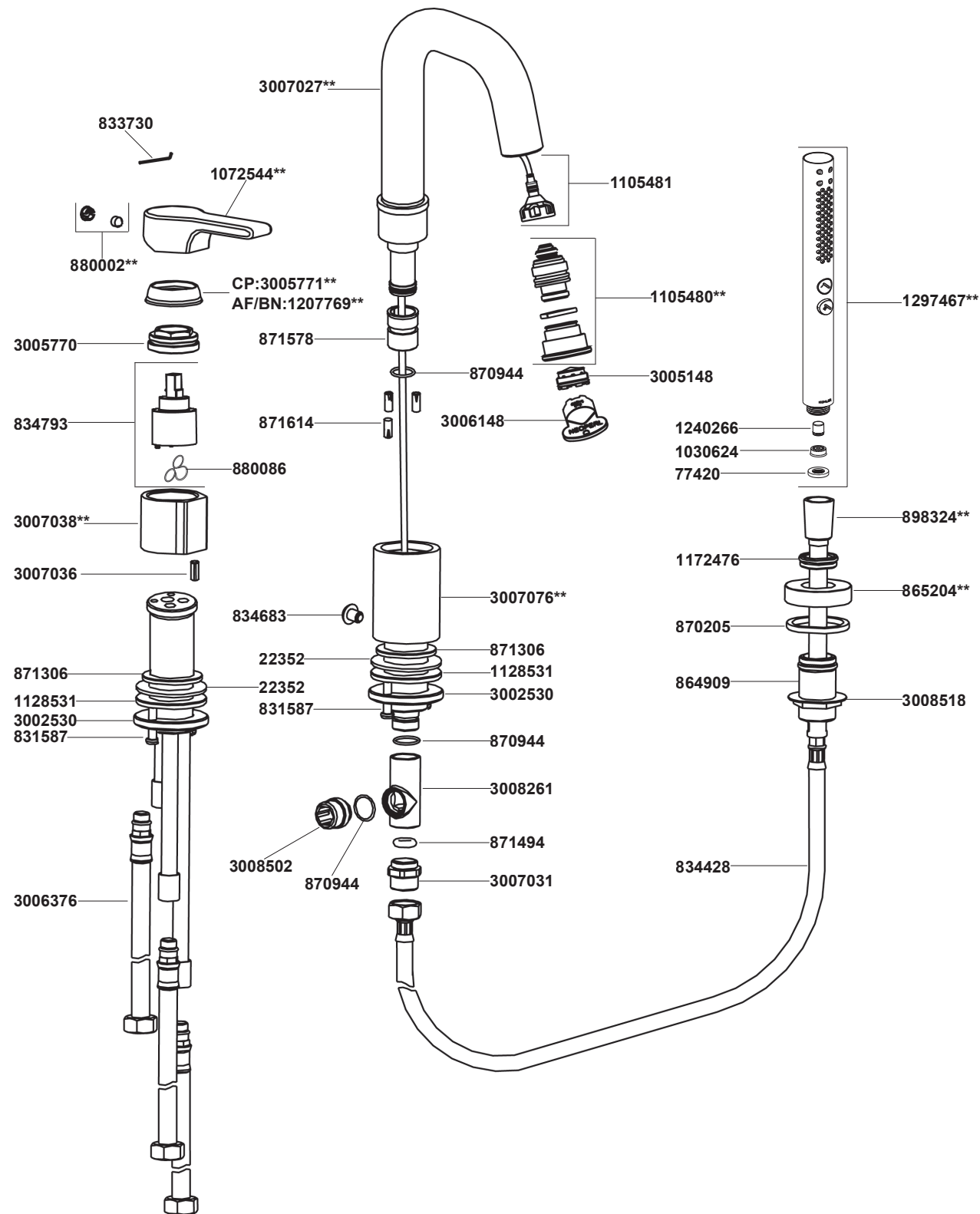


## 10873T-B4 Deck-Mount Bath & Shower Faucet



**\*\*Color code must be specified when ordering**

## 10873T-B4 Deck-Mount Bath & Shower Faucet

## BEFORE YOU BEGIN

All information is based on the latest product information available at the time of publication. Kohler Co. reserves the right to make changes in product characteristics, packaging, or availability at any time without notice.

Please leave these instructions for the consumer. They contain important information.

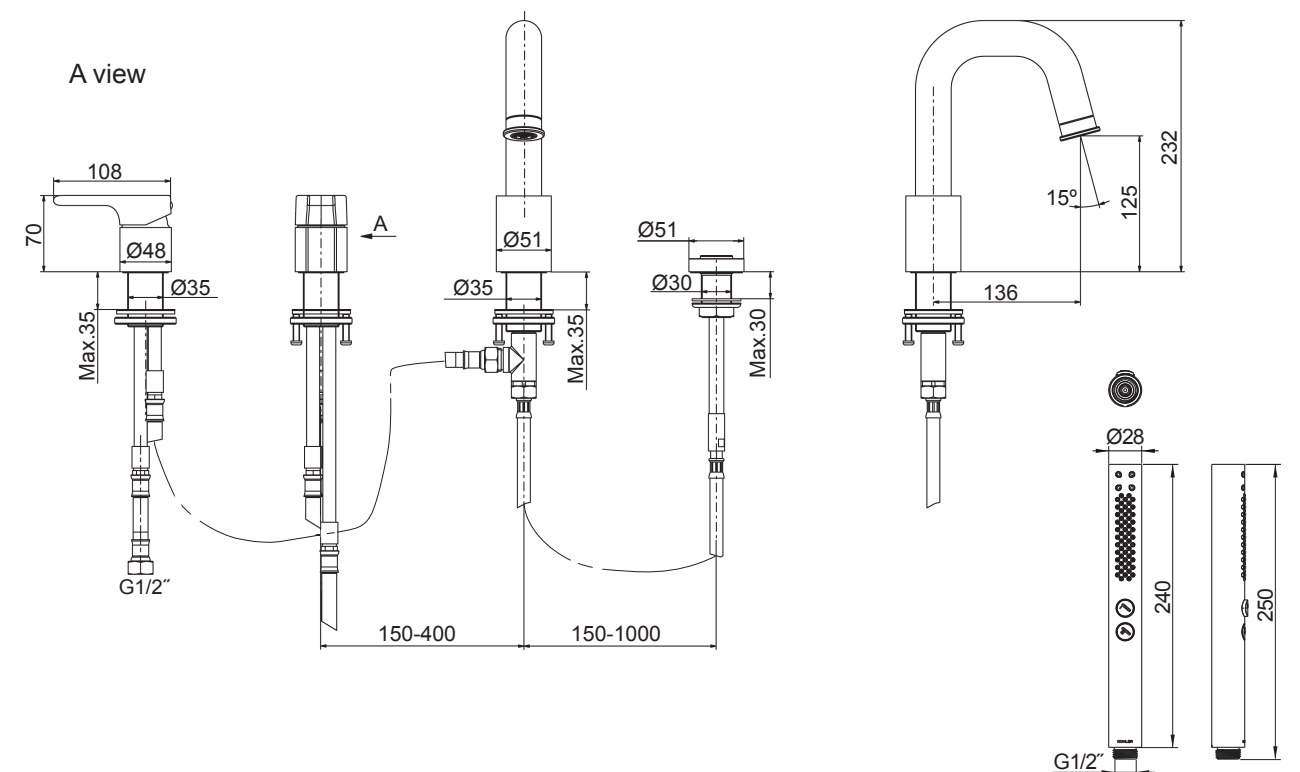
**NOTES:**

1. Flush the water supply pipes thoroughly to remove debris.
2. Inspect the supply pipes for damage. Replace as necessary.
3. Observe local plumbing codes.
4. If possible, install the faucet before installing the tub.
5. The highest working pressure for handshower is 0.5MPa(5bar). If it exceeds 0.5MPa(5bar), a pressure reducer is needed. The highest water and environment temperature is 60°C. Please keep handshower, showerhead and shower arm away from heater, or it may become damaged and cause injury to the user.

## HANDLE OPERATION

1. For flow-control handle: Lift the handle gently, turn clockwise for hot water, counter-clockwise for cold water.
2. Spout works when the aerator holder is at the usual position. Pull down aerator holder for handshower.
3. The spout is rotatable within 135°.

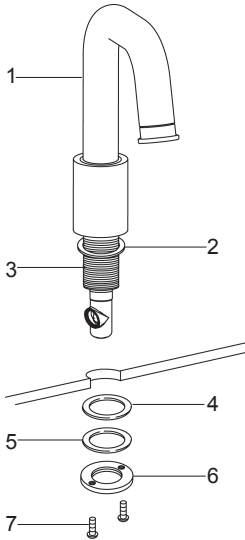
## ROUGH-IN DIMENSIONS



# INSTALLATION

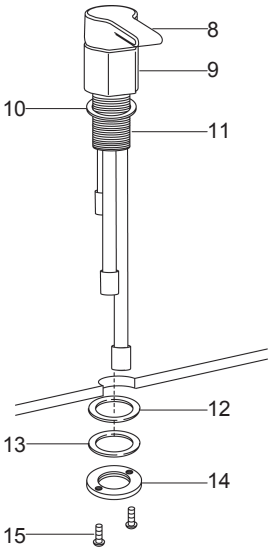
## How to Install the Spout

Insert the spout assembly(1) into the center hole of tub. (Note: the rubber washer(2) is in the bottom groove of spout). Thread the screws(7) into the threaded ring(6). From underside of the tub, fit the fiber washer(4), steel washer(5) and threaded ring(6) on the shank(3). Position the spout assembly, keep spout frontwards. Secure the spout assembly by tightening screws(7).



## How to Install the Valve Assy

Insert the valve assembly(9) into the left mounting hole.(**Note:** the rubber washer(10) is in the bottom groove of valve assembly). Thread the screws(15) into the threaded ring(14). From underside of the tub, fit the fiber washer(12), steel washer(13) and threaded ring(14) on the shank (11). Position the valve assembly, keeping the handle(8) frontwards. Secure the valve assembly by tightening screws(15).

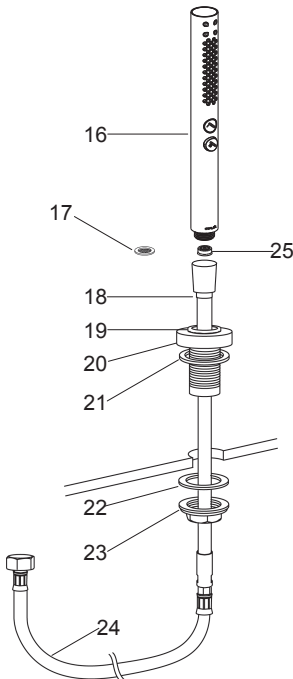


## How to Install the Handshower

Put the rubber washer(21) into the groove of the escutcheon(20). Place the shank into the mounting hole. From underside, install the washer(22) and nut(23) to the shank. Then tighten the nut firmly.

Slide the shower hose(18, length: 2000mm) through the hose guide(19), and attach to the connection hose(24, length: 600mm).

Put the washer(17, thickness: 3mm) into the shower hose(18) connector. install the restrictor(25) into the handshower(16) inlet if needed. Thread it to handshower.

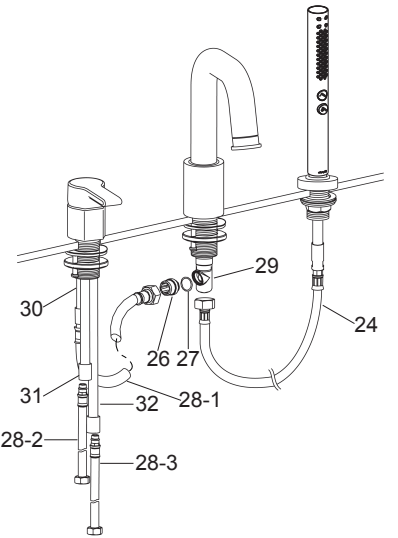


## How to Connect the Hoses

Thread the connector(26) with o-ring(27) to tee(29) by 14mm hex wrench (Not provided). Connect outlet tube(30, the shortest one) of valve assembly to connector(26) with hose(28-1).

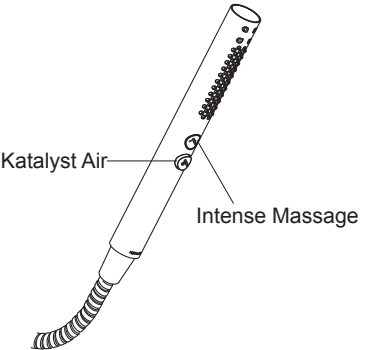
Attach the connection tubes(31, 32) with blue and red mark to cold and hot water supplies respectively by the other two hoses(28-2, 28-3). Connect the red one to hot supply.

Connect the hose(24) to the tee.



## How to Operate the Handshower

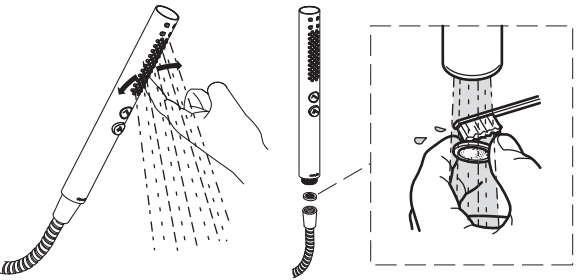
Press the buttons of the handshower to change the water flow.



## How to Maintain the Handshower

Any debris or mineral build-up may cause the flow stream to become distorted or reduce the flow rate. To remove the debris or mineral build-up, run water through the handshower, firmly press or rub your finger back and forth across the rubber nozzles.

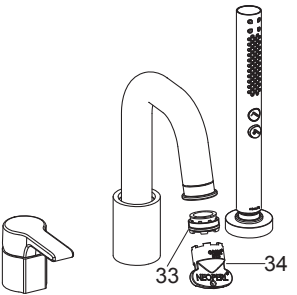
Remove and clean the screen washer.



## INSTALLATION CHECKOUT

Ensure that all connections are tight. Ensure that the handle is in the off position.

Remove the aerator(33) with key(34), Remove handshower. Open the drain. Turn on the main supply and check for leaks. Open valve and run water through the spout about one minute to remove any debris. Diverter to handshower to remove any debris. Turn the valve off. Reinstall the aerator and handshower.



## CLEANING INSTRUCTIONS

All Finishes: Clean the finish with mild soap and warm water. Wipe entire surface completely dry with clean soft cloth. Many cleaners may contain chemicals, such as ammonia, chlorine, toilet cleaner etc. which could adversely affect the finish and are not recommended for cleaning.

Do not use abrasive cleaners or solvents on Kohler faucets and fittings.