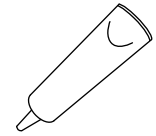
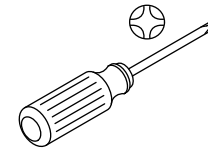


# KALLISTA®

Installation Guide



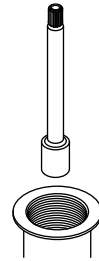
100% Silicone Sealant

**Record your model number.**

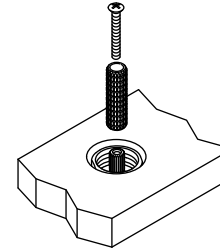
**Important Information**

Follow all local plumbing and building codes.

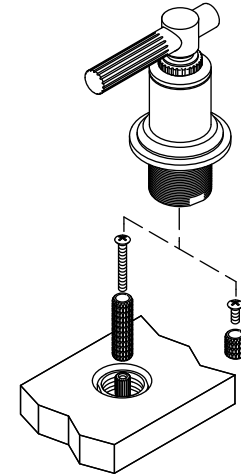
**1** Install the stem extension into the valve.



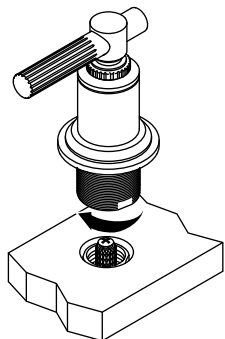
**2** Install the spline adapter to the stem extension with the screw.



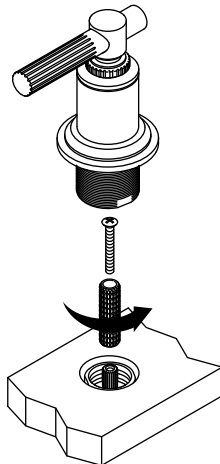
**3** For deep rough-ins, use the longer spline adapter and screw.



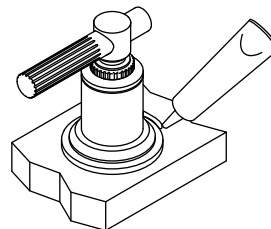
**4** Install the handle onto the spline adapter. Thread the handle into the sleeve.



**5** To adjust handle position, rotate the extension one tooth. Repeat until aligned.



**6** Apply 100% silicone sealant around the escutcheon.



Questions? Problems? For additional assistance, please contact  
KALLISTA's Customer Service Department at 1-888-4-KALLISTA  
(1-888-452-5547) or [kallista.com](http://kallista.com).