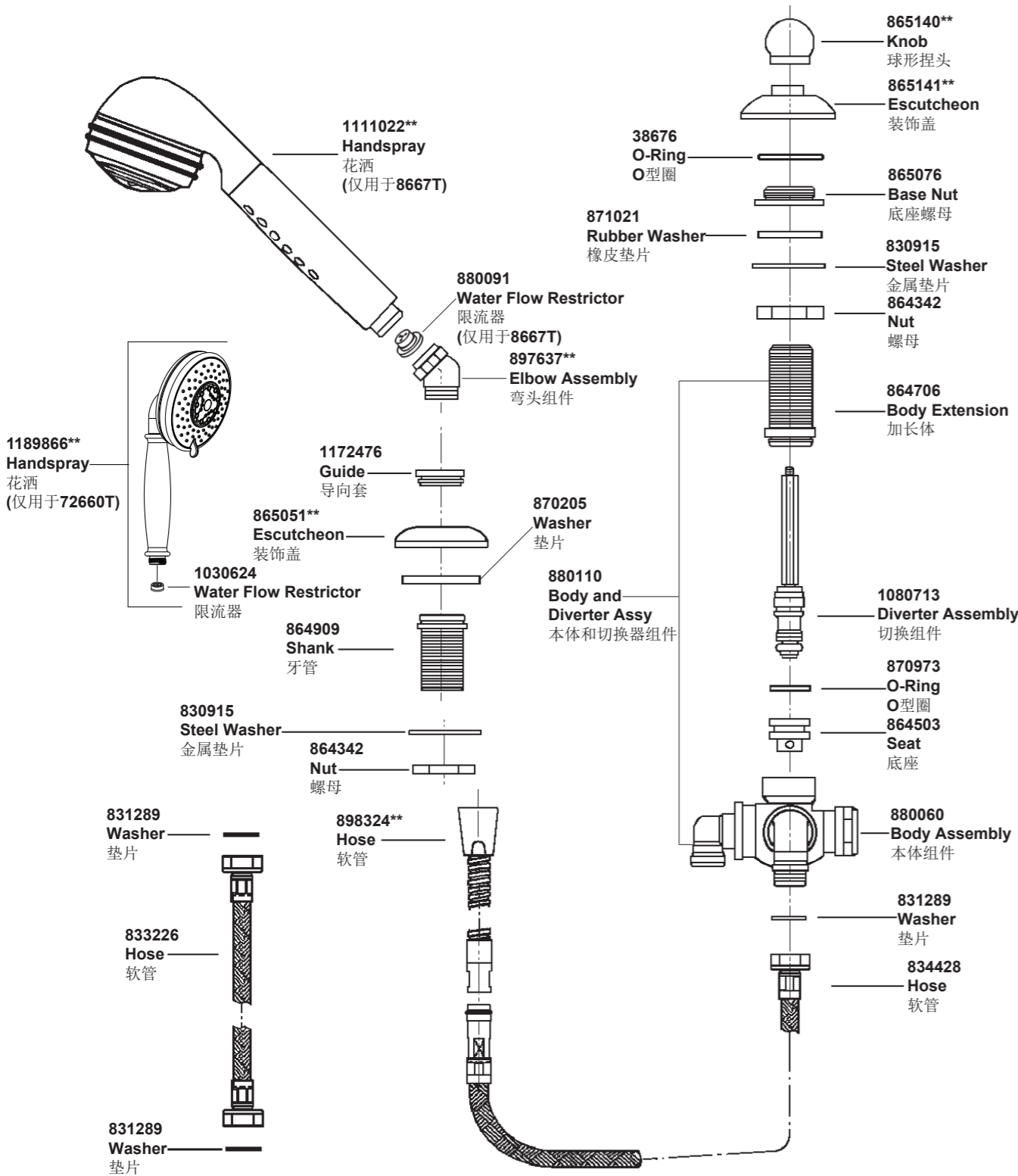


8667T 72660T 缸边式花洒及分水器



**订购时请说明颜色编号
**Color code must be specified when ordering

8667T 72660T 缸边式花洒及分水器

安装之前

所有的资料是按最新出版的产品资料编写而成。科勒公司保留任何时候不经通知即可改变产品特性、包装或产品可供类型的权利。

说明书包括重要的安装、保养及清洁方面的内容，请把这些资料交给用户阅读。

注意事项：

1. 切断主供水源。
2. 在安装前，将说明书仔细阅读一遍。
3. 遵守当地管路安装条例。
4. 该龙头只具有切换功能，它必须与有冷热控制开关的浴缸龙头配合使用。

5. 切换器正常工作的最小压力为0.05MPa(0.5bar)。

6. 花洒最高工作压力：0.5MPa(5bar)。水压超过0.5MPa(5bar)须安装减压阀。花洒最高工作温度及环境温度：60°C。请特别注意花洒同花洒连接的臂管须远离浴霸，否则可能损坏花洒及其密封件，甚至对使用者造成伤害。

BEFORE YOU BEGIN

All information is based on the latest product information available at the time of publication. Kohler Co. reserves the right to make changes in product characteristics, packaging, or availability at any time without notice. Please leave these instructions for the consumer. They contain important information.

NOTES:

1. Shut off the main water supply.
2. Carefully read entire instructions before beginning installation.
3. Observe local plumbing codes.
4. This faucet have diverter function only. It must be installed in conjunction with a bath faucet(purchased separately) that has both on/off and hot/cold mixing control.
5. The minimum inlet water pressure for the diverter is 0.05MPa(0.5bar).
6. The highest working pressure for handspray is 0.5MPa(5bar). If it exceeds 0.5MPa(5bar), a pressure reducer is needed. The highest water and environment temperature is 60°C. Please keep handspray, showerhead and the shower arm away from heater, or it may become damaged and cause injury to the user.

使用说明

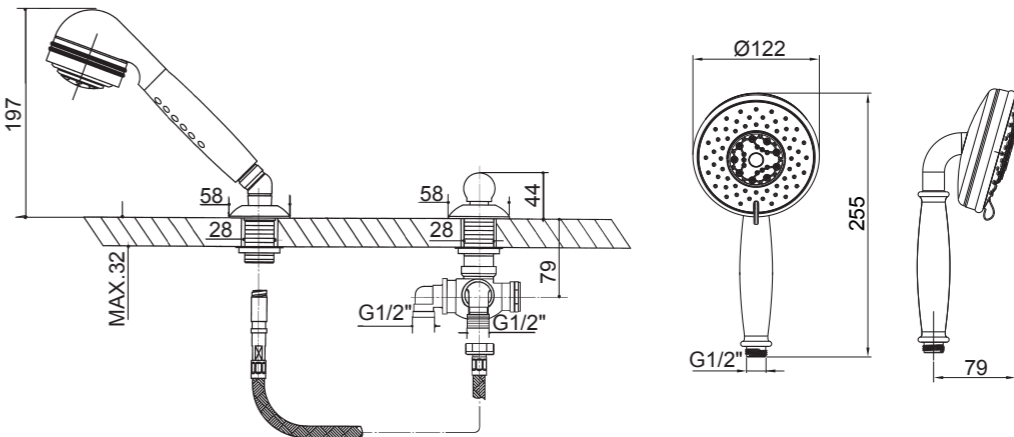
开启浴缸龙头，水从出水口流出，按下切换器，水流切换到花洒。

HANDLE OPERATION

When the bath faucet is open and water is flowing from the bath spot, press the diverter down to change flow to the handspray.

安装尺寸

ROUGH-IN DIMENSIONS

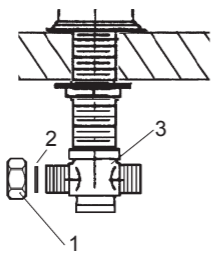


安装步骤

INSTALLATION

如何安装切换器

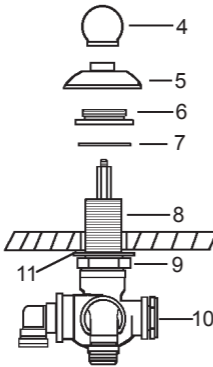
按照安装说明书安装选定的龙头。如果有可能，在其他所有安装完后再安装出水口等表面电镀过的零件。把垫片(2)放入螺母(1), 并将其旋到T型接头(3)的任意端口上, 锁紧(随龙头的两个软管去掉不用)。



How To Install The Diverter

For optional spout, install spout shank according to the spout installation instructions. If possible, do not install plated finished portion of the spout until all other installation and construction is complete. Put the washer(2) into the nut(1), and then thread the nut to one of the ports of the center Tee(3) until tight(Remove the two hoses and put them away).

请依次将切换头(4)、装饰盖(5)、螺母(6)、橡胶垫片(7)从本体组件的牙管(8)上取下。



Remove the knob(4), escutcheon(5), base nut(6), rubber washer(7) from the shank(8) of the body assembly in turn.

从台面或浴缸边缘的下部将带牙管切换组件(10)穿过安装孔。将橡胶垫片(7)套在牙管(8)上, 旋上螺母(6), 平面向下。用扳手拧紧螺母(9)。

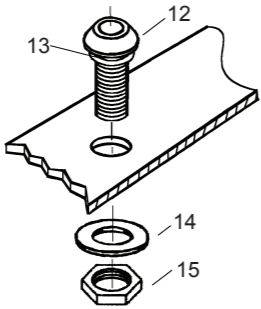
Place the body assembly(10) through mounting hole from bottom of the deck or bath rim. Put the rubber washer(7) on the shank(8), and then thread nut(6) with flange side down on the shank. Wrench tight the nut(9).

将装饰盖(5)旋到螺母(6)上, 使其与台面接触。再将切换头(4)旋到切换组件上。

Thread the escutcheon(5) on base nut(6) until it contacts the sink. Then thread the knob(4) on the diverter assembly.

如何安装花洒

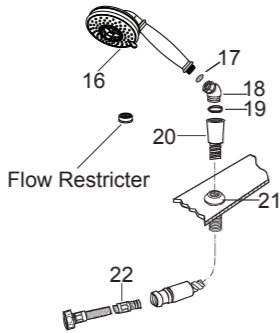
拆下螺母(15)、垫片(14), 将橡胶垫片(13)置于装饰盖(12)内凹槽内。将牙管装入安装孔。从下方将垫片(14)、螺母(15)安装到牙管上。然后拧紧螺母。



How To Install The Handspray

Remove the nut(15), washer(14). Put the rubber washer(13) into the groove of the escutcheon(12). Place the shank into the hole. From underside, install the washer(14) and nut(15) to the shank. Then tighten the nut firmly.

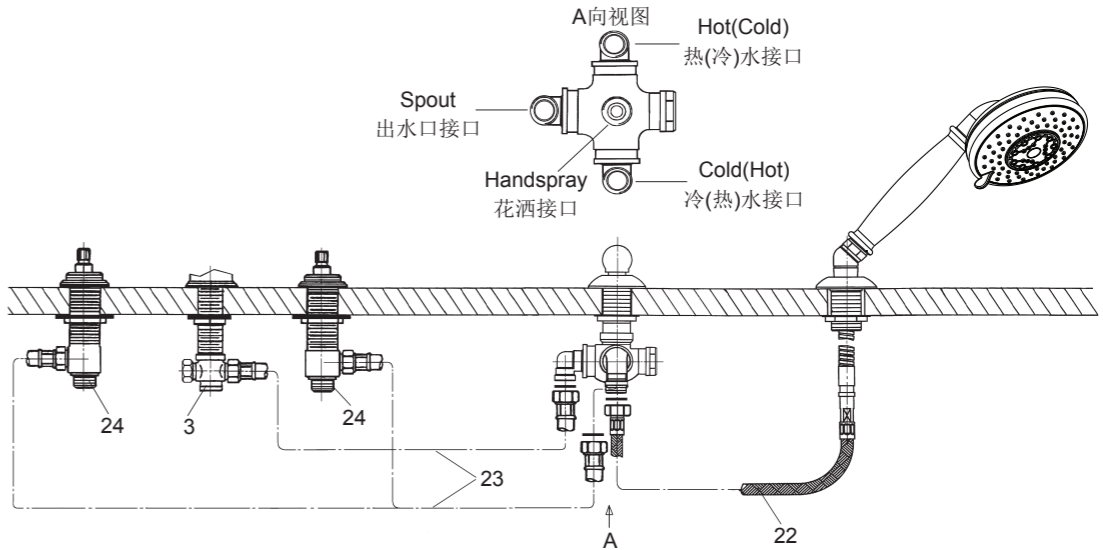
将软管(20)穿过导向套(21)连接到软管(22)上。



将限流器塞入花洒(16)进水口, 将垫片(17)放入弯头组件(18), 把弯头组件旋接到花洒上。把垫片(19)放入软管接头并旋接到弯头组件上。

Slide the hose(20) through the hose guide(21), and attach to the hose(22).

Put the flow restrictor into handspray inlet. Put the washer(17) into the elbow assembly(18), and then thread them to the handspray(16). Put the washer(19) into the connector of the hose and thread them to the elbow assembly.



在软管(22)的连接螺母内放入垫片, 并将其锁紧到切换器的花洒接口上。在软管(23,长1米)的两端连接螺母内分别放入垫片, 连接T型接头(3)和切换器的出水口接口, 然后连接两阀体(24)和切换器的冷热水接口(冷热接口可互换)。锁紧所有的连接螺母。

Put the fiber washer into connecting nut of the hose(22). Then thread the nut to the handspray port of the diverter. Put the fiber washer into each connecting nut of the hose(23, length 1m). Then connect the center Tee(3) to spout port of the diverter, and connect the side bodies(24) to the hot or cold port of the diverter(The hot and cold ports are interchangeable). Tighten all the connecting nut.

为保证水流顺畅, 花洒抽取自如, 应该避免软管打结、缠绕。为了安装方便, 可以适当旋松T型接头, 但不要超过180。

To ensure the water flow smoothly and the hand spray can be drawn out easily, the hose should avoid kinking, twisting. To ease installation, you may back off center Tee up to 180 degree.

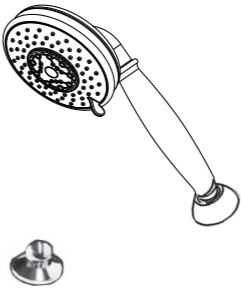
注意: 软管(23)只能用于此处。

Note: The hoses(23) should only be used here.

安装结果检查

INSTALLATION CHECKOUT

确保所有连接螺母都已拧紧。打开要供水源, 检查并修理有漏水的接口。



Ensure all coupling nuts are tight. Turn on main water supply and check for leaks. Repair as required.

轻轻转动花洒头, 可得到标识的三种不同水流形式。

Gently rotate the shower head. You can get three different flows signed on spray head.

清理说明

CLEANING INSTRUCTIONS

适用于所有加工处理过的表面: 以中性肥皂水清洗镀层表面, 再以干净的软布彻底擦干整个表面, 许多清洁剂, 比如氨水、去污粉及洁厕灵等, 会对电镀表面造成伤害, 切忌使用。

All Finishes: Clean the finish with mild soap and warm water. Wipe entire surface completely dry with clean soft cloth. Many cleaners may contain chemicals, such as ammonia, chlorine, toilet cleaner etc. which could adversely affect the finish and are not recommended for cleaning.

有磨损性的清洁用具或清洁剂也不可使用于科勒牌的水龙头及其配件上。

Do not use abrasive cleaners or solvents on Kohler faucets and fittings.