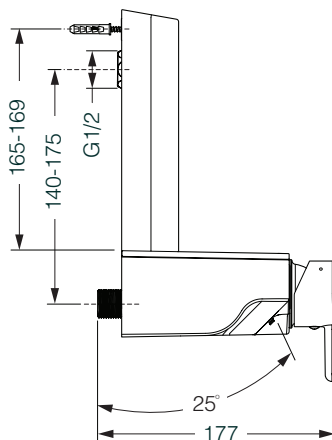
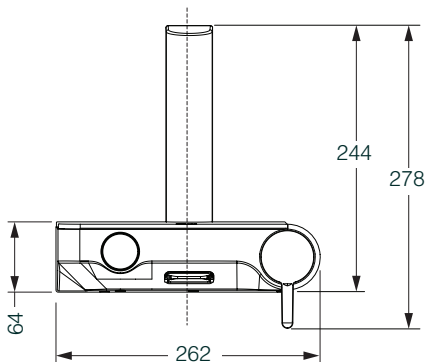
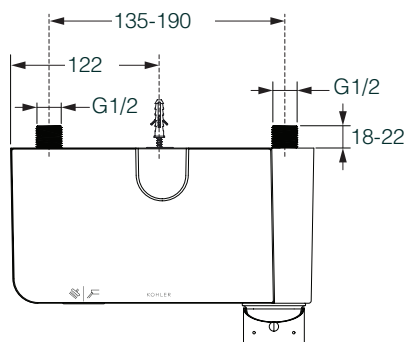


23147IN-4**
PUSH BUTTON EXPOSED
BATH AND SHOWER

**Finish code must be specified when ordering.

ROUGH-IN (in mm)



PRESSURE AND HOT INLET TEMPERATURE



P (Bar) 0.5 < 3 < 5.5



T (°C) < 65

TOOLS REQUIRED



12 mm, 2.5 mm

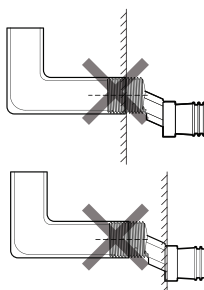
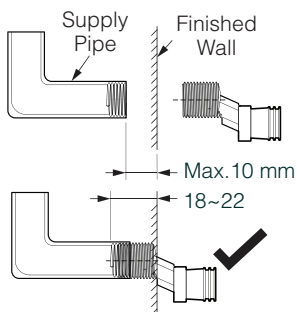


8 mm



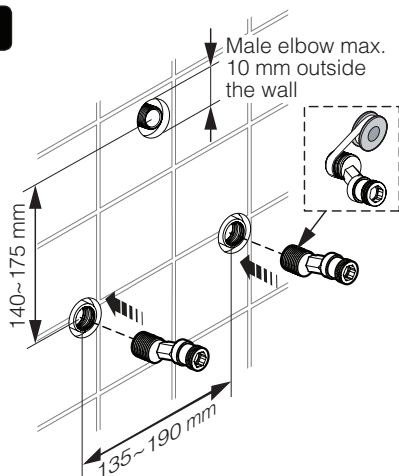
100% Silicone Sealant

CONNECTOR INSTALLATION



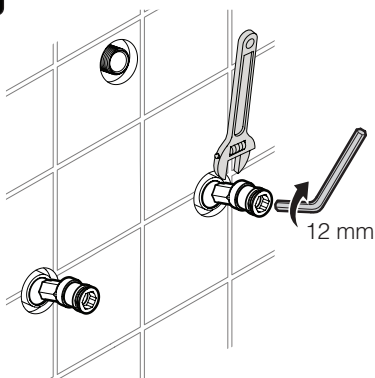
INSTALLATION INSTRUCTIONS

1



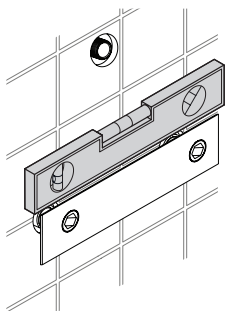
Apply the thread sealant tape on the threads to avoid leakage.

2



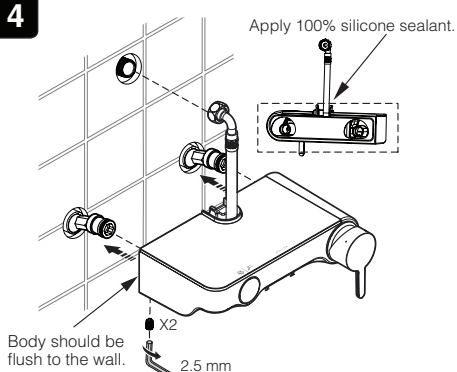
1. For correct installation, only the threaded area of the connector should be inside the wall.
2. After installing the connectors, check for leakage.

3



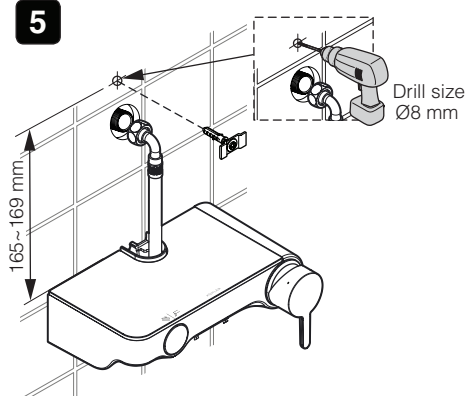
1. Use the provided template to adjust connector center distance.
2. Use a level to align both the connectors.

4

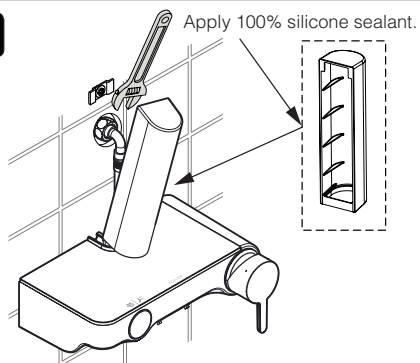


1. Slide the body over the connectors.
2. Tighten the screws from the underside.

5

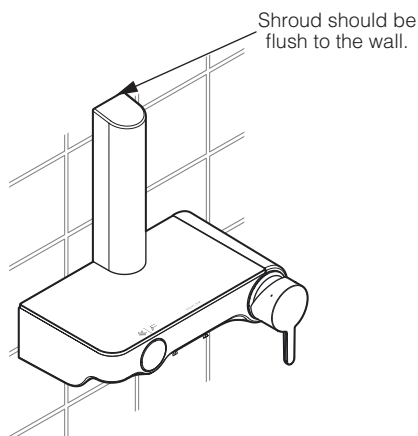


6



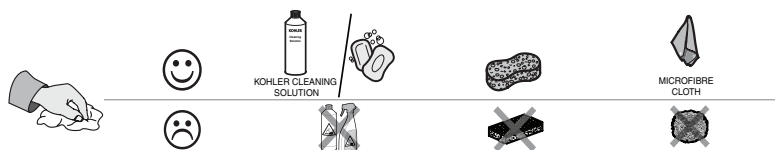
1. Hang the shroud over the showerhead hose.
2. Assemble the showerhead hose with the wall male elbow.

7

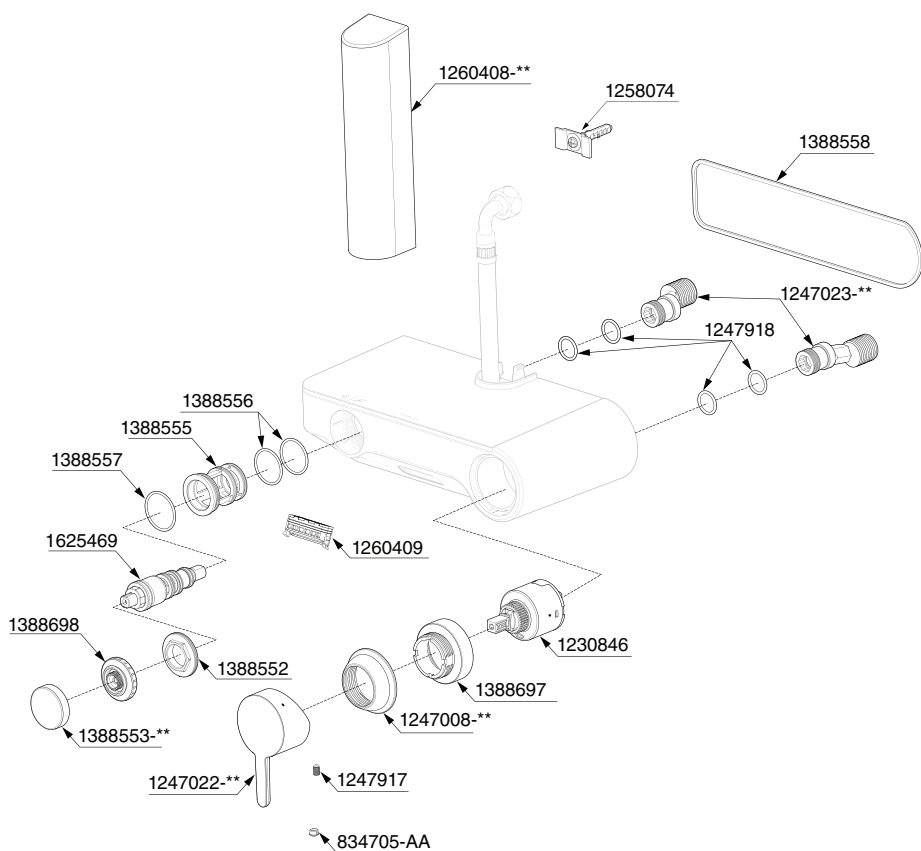


Slide the shroud over the clamp plate and assemble with the body.

CLEANING INSTRUCTIONS



SERVICE PARTS



**Finish code must be specified when ordering.