



Record your model number: \_\_\_\_\_

**IMPORTANT!** If not installing into concrete, install 2x4 backing support where the product will be mounted.

Follow all local plumbing and building codes.

**1A.** 8 mm Drill Bit

**1B.** Sealant

**1C.** 2x4s

**3A.** Using the provided 3 mm hex wrench, loosely attach the bracket with the supplied screws.

**5A. Installation to Concrete:** Drill 8 mm pilot holes at the marked locations.

**5B. Installation to Wood Backing:** Using the provided 3/16" drill bit, drill holes through the finished wall and into the 2x4 backing at the marked locations.

**6A.** Apply sealant around each hole.

**Follow steps 7-9 for installation into concrete. Follow step 10 for installation into wood backing.**

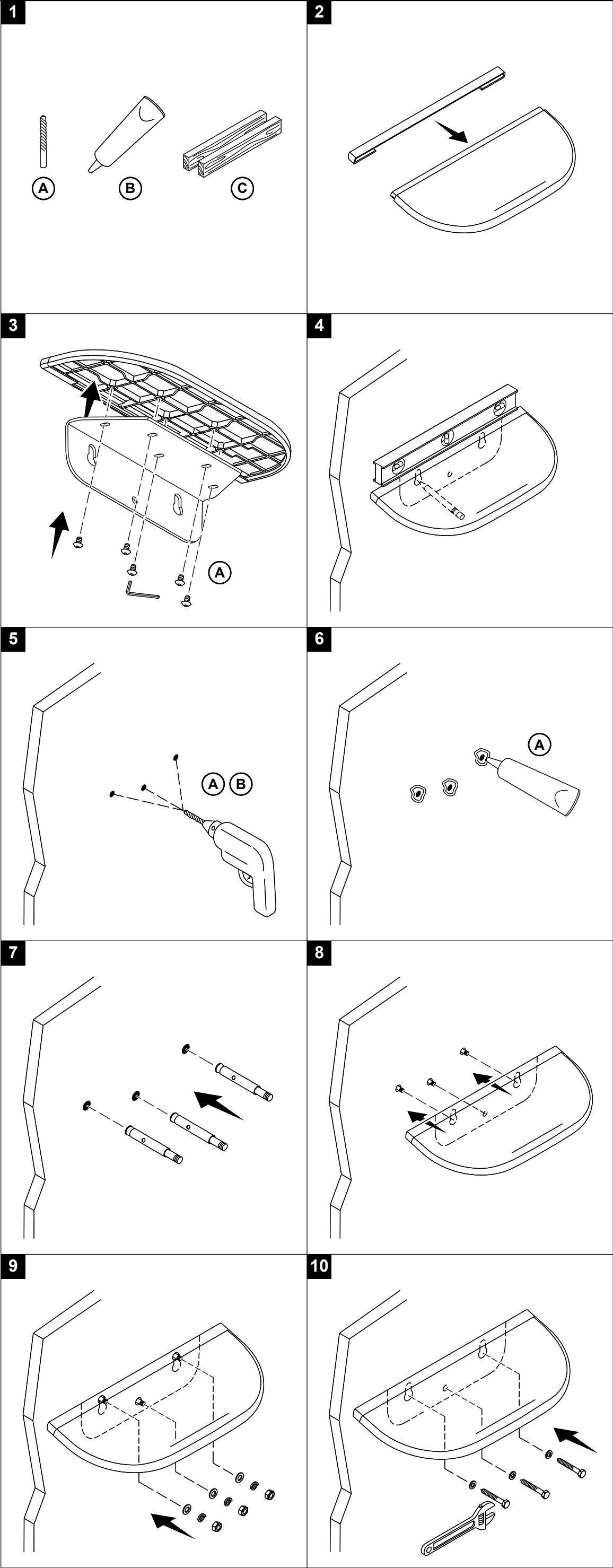
**11A.** Slide the shelf against the wall and fully tighten the screws.

**12A.** Verify that the cover slides under the shelf trim.

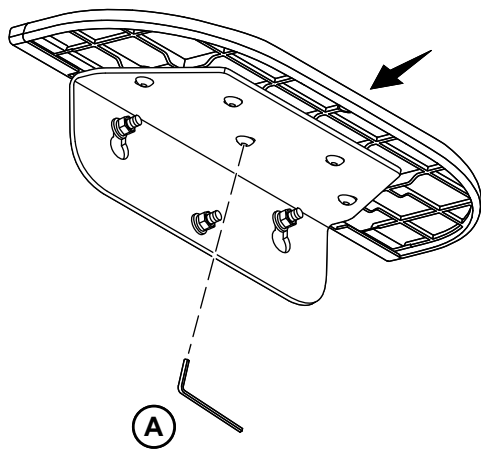
**Need help?** Contact our Customer Service.

- Email: [technicalsupport@kohler.co.uk](mailto:technicalsupport@kohler.co.uk)
- 0800 001 4466

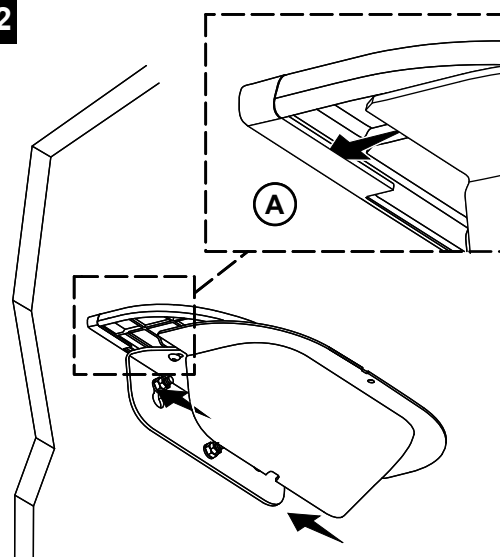
This product is covered under the **KOHLER® Showerheads, Shower Fittings, Bathroom Accessories, and Wastes Two-Year Limited Guarantee.** For a hardcopy of guarantee terms, contact Customer Service.



11



12



13

