

Record your model number: _____

⚠ WARNING: Risk of scalding. High water temperature can cause severe burns. Set the valve water temperature at or below 120°F (49°C). Refer to the temperature adjustment instructions for the valve.

⚠ CAUTION: Risk of property damage. Spraying pressurized water directly at the sprayface may cause water to leak behind the finished wall. Do not spray pressurized water directly into the sprayface.

NOTE: The body spray can be installed vertically (shown) or horizontally.

NOTE: The steps are the same for single and multiple body spray installations.

Follow all local plumbing and building codes.

1A. Sealant Tape

1B. Hex Wrenches: M8, M10

1C. Temporary G1/2 Nipple and Plug

2A. Installation Depth: 3-1/8" (79 mm)

3A. Single Body Spray: Install a G1/2 elbow and temporary nipple at the body spray installation location.

3B. Multiple Body Sprays: Construct a pressure-balancing loop. Locate a G1/2 tee/elbow and temporary nipple along the loop at each body spray installation location.

4A. Flush hot and cold water for 1 minute to remove any debris.

6A. Turn ON the water supplies and check for leaks.

9A. Install the finished wall. Remove the temporary nipple.

10A. Cut the pipe connector so the face of the connector is 1-11/16" (42 mm) - 2" (51 mm) from the finished wall when installed.

11A. Using an M8 hex wrench, thread the pipe connector into the elbow/tee.

12A. Using an M10 hex wrench, thread the adapter onto the pipe connector.

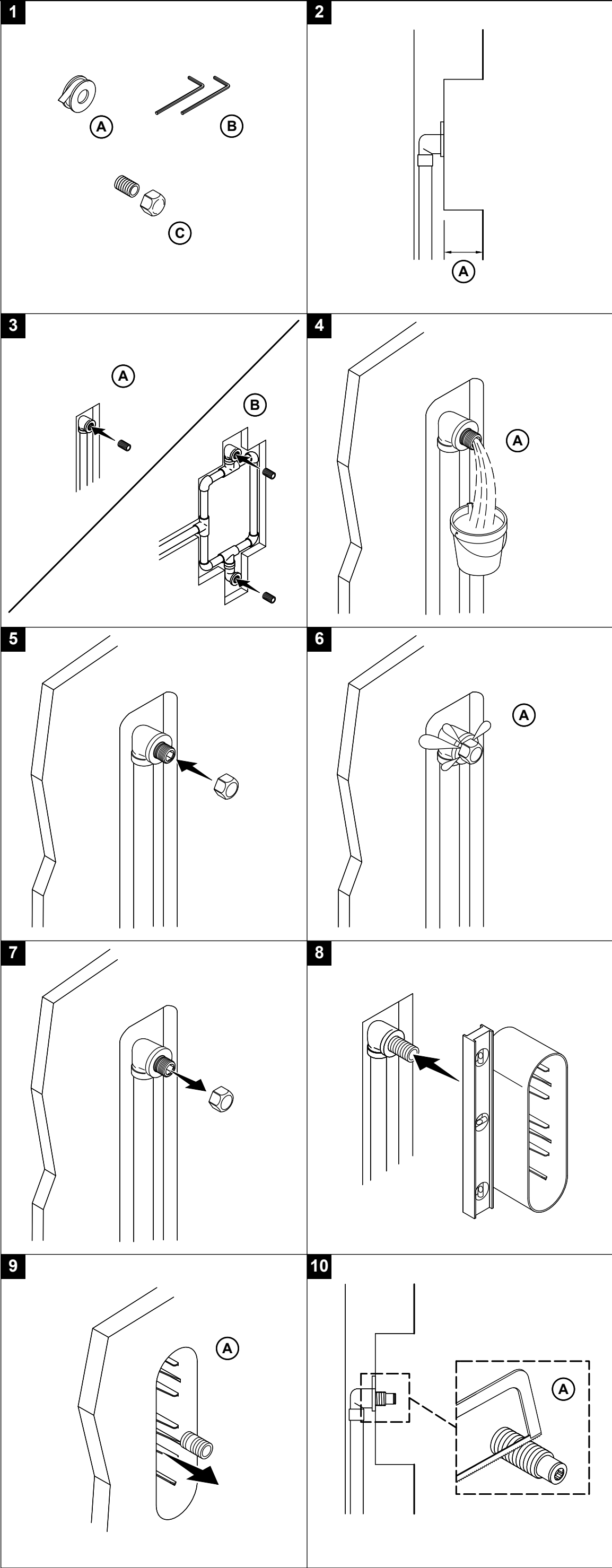
14A. Position a weep hole at the bottom.

Need help? Contact our Customer Care Center.

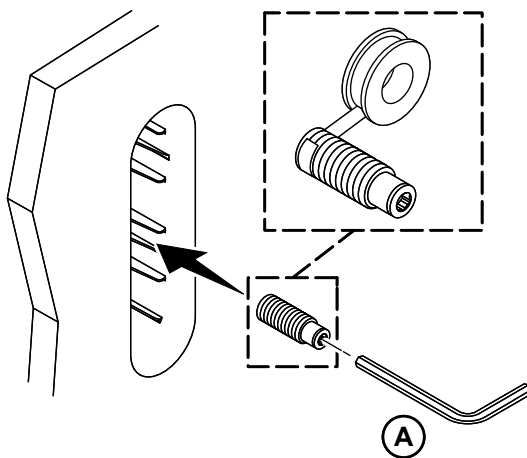
• Email: indiacustomercare@kohler.com

• Call: 1800-103-2244

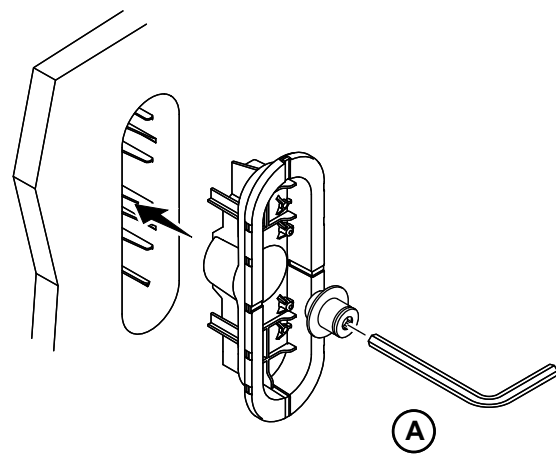
This product is covered under the **KOHLER® India Faucet, Sanitaryware and Bathing Products Limited Warranty**, found at kohler.co.in/warranty.



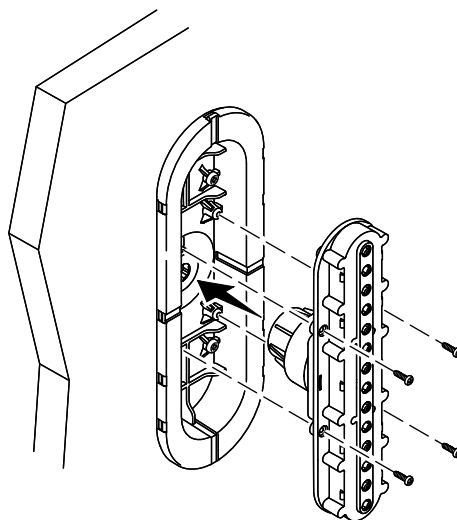
11



12



13



14

