



Record your model number: \_\_\_\_\_

**⚠ WARNING: Risk of scalding.** High water temperature can cause severe burns. Set the valve water temperature at or below 120°F (49°C). Refer to the temperature adjustment instructions for the valve.

**⚠ CAUTION: Risk of product damage and personal injury.** Keep the product away from a heater.

Follow all local plumbing and building codes.

**1A.** 10 mm Socket

**1B.** Sealant Tape

**1C.** 8 mm Hex Wrench

**1D.** 8 mm Drill Bit

**1E.** 2x4s

**2A. For Concrete Ceilings:** Cut away the concrete and/or brick 1-1/2" (38 mm) to 2-15/16" (75 mm) above the finished ceiling.

**2B. For Wood Ceilings:** Install 2x4 wood support between the ceiling joists 1-3/4" (44 mm) to 3-3/4" (95 mm) above the finished ceiling.

**4A. Installation to Concrete:** Use a 8 mm drill bit.

**4B. Installation to Wood Backing:** Use the provided 3/16" drill bit.

**5A. Installation to Concrete:** Use the provided concrete expansion anchors.

**5B. Installation to Wood Backing:** Use the provided lag screws.

**7A.** Install G1/2 supply pipes.

**8A.** Using an 8 mm hex wrench, remove the adapters and screen washers. Flush debris. Reinstall the screen washers and adapters.

**10A.** Install the finished ceiling.

**11A.** The end of the adapters should extend 1-1/4" (32 mm) to 2-11/16" (68 mm) from the finished ceiling.

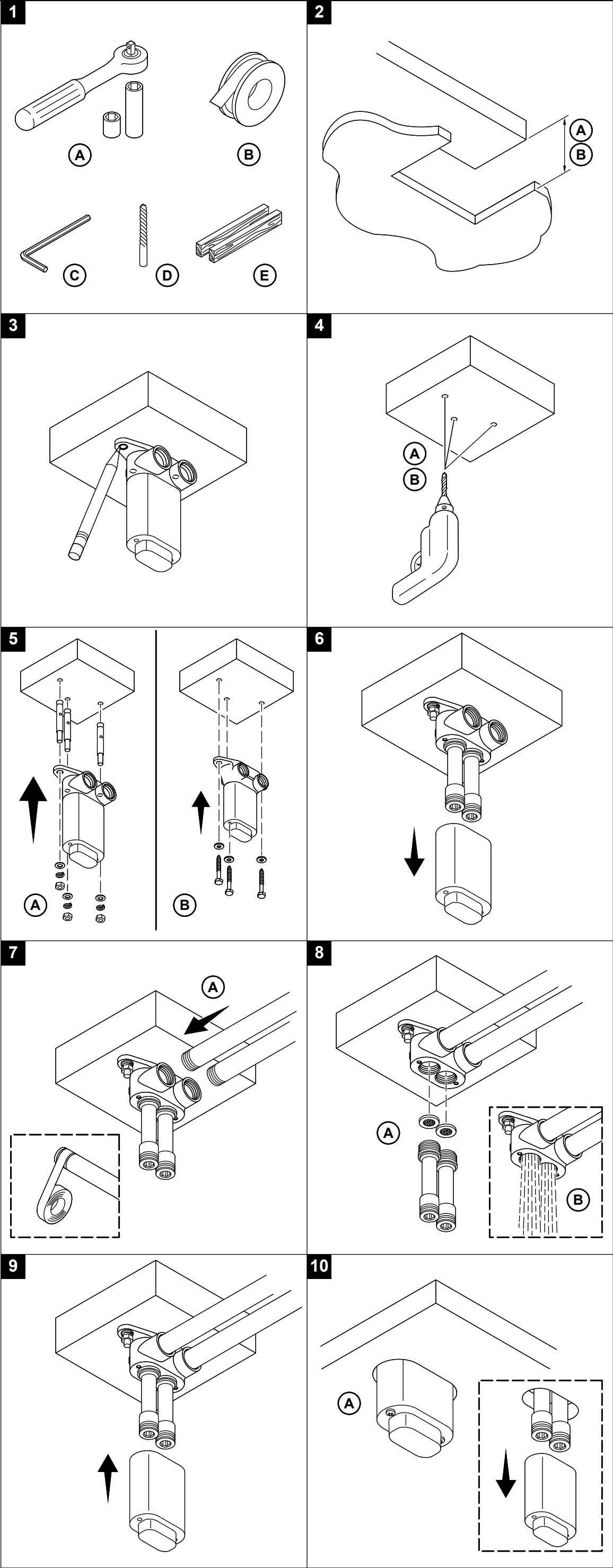
**12A.** Slide the dual arm onto the adapters. Secure with the four setscrews.

**Need help?** Contact our Customer Service.

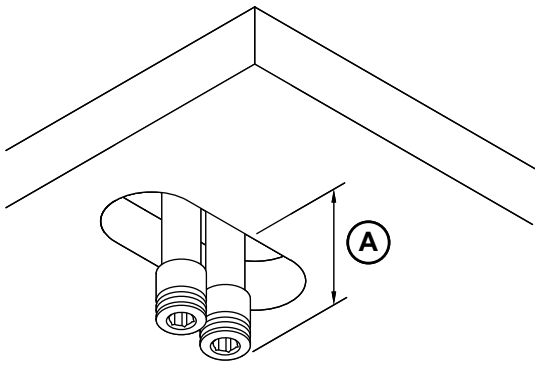
• Email: [technicalsupport@kohler.co.uk](mailto:technicalsupport@kohler.co.uk)

• 0800 001 4466

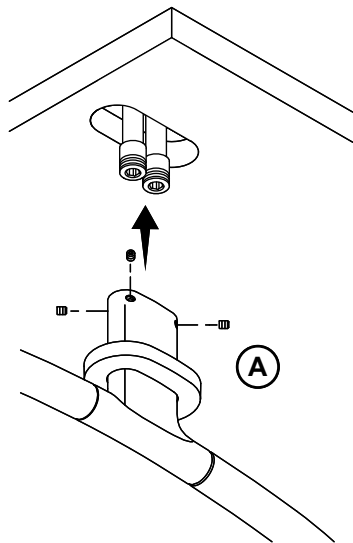
This product is covered under the **KOHLER® Showerheads, Shower Fittings, Bathroom Accessories, and Wastes Two-Year Limited Guarantee**. For a hardcopy of guarantee terms, contact Customer Service.



11



12



13

