

Record your model number: _____

⚠ WARNING: Risk of scalding. High water temperature can cause severe burns. Set the valve water temperature at or below 120°F (49°C). Refer to the temperature adjustment instructions for the valve.

Follow all local plumbing and building codes.

READ AND FOLLOW ALL INSTRUCTIONS

SAVE THESE INSTRUCTIONS

Additional Required Tools and Materials

1A. 6 mm Drill Bit

1B. Sealant Tape

1C. Silicone Sealant

1D. 6 mm Hex Wrench

Installation Steps

2A. 48" (1219 mm) Minimum

6A. Drill 6 mm holes at the marked locations.

8A. Apply silicone sealant along the inside of the seal.

9A. Loosely thread both setscrews into the slidebar.

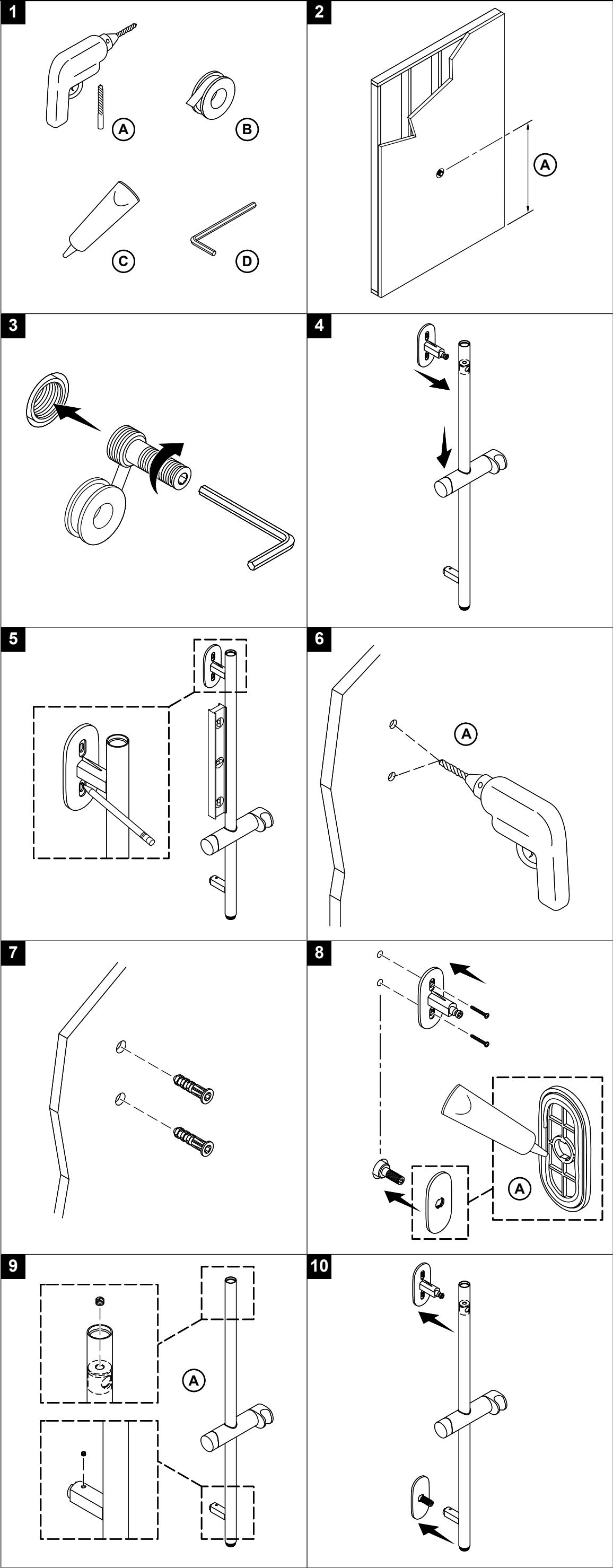
13A. Run water to flush debris.

Need help? Contact our Customer Service.

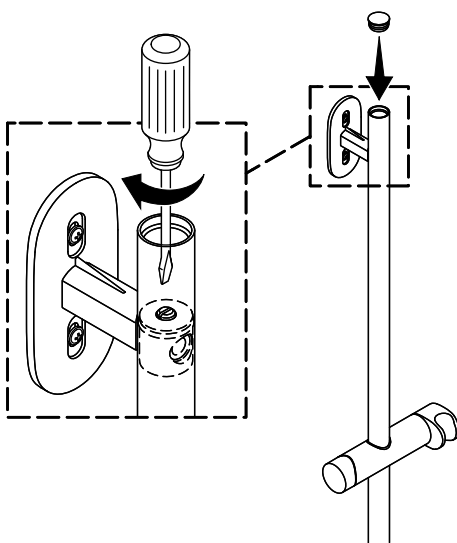
• Email: technicalsupport@kohler.co.uk

• 0800 001 4466

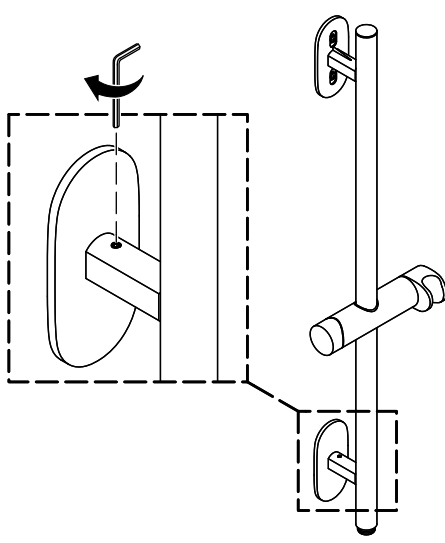
This product is covered under the **KOHLER® Showerheads, Shower Fittings, Bathroom Accessories, and Wastes Two-Year Limited Guarantee.** For a hardcopy of guarantee terms, contact Customer Service.



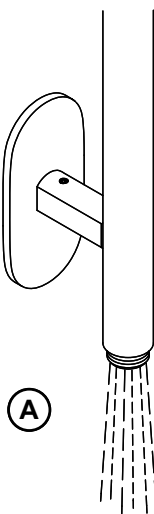
11



12



13



14

