



Record your model number: _____

⚠ WARNING: Risk of scalding. High water temperature can cause severe burns. Set the valve water temperature at or below 120°F (49°C). Refer to the temperature adjustment instructions for the valve.

Follow all local plumbing and building codes.

1A. Sealant Tape

1B. G1/2 Supply Elbows

2A. Install two supply elbows 5-7/8" (150 mm) apart.

3A. Install the finished wall with a 1-1/2" (38 mm) maximum diameter hole at each elbow location.

3B. Turn ON the water supplies to flush debris.

5A. Verify that the offset connectors protrude 1-5/16" (33 mm) - 1-3/4" (44 mm) from the finished wall. Change or adjust the z-connectors if necessary.

5B. Verify that the offset connectors are 5-7/8" (149 mm) - 5-15/16" (151 mm) from center to center and level. Adjust if necessary.

8A. Mark the location of the column on both sides.

9A. Remove the bracket from the back of the shower column and place on the wall between the marked lines. Mark the hole locations.

10A. Drill 10 mm holes at the marked locations.

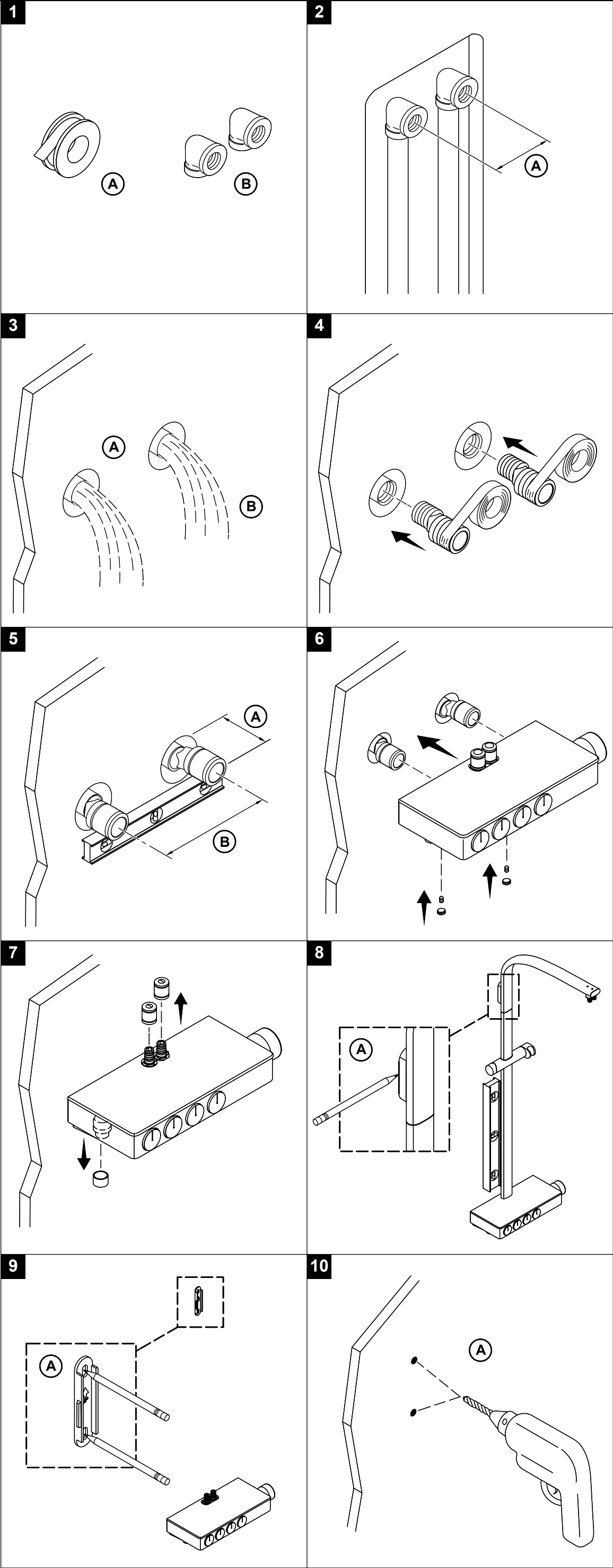
11A. Install concrete anchors.

16A. Install the handshower and showerhead according to the manufacturers instructions.

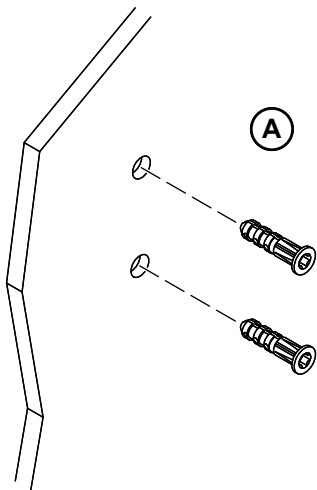
Need help? Contact our Customer Care Center.

- Email: indiacustomer care@kohler.com
- Call: 1800-103-2244

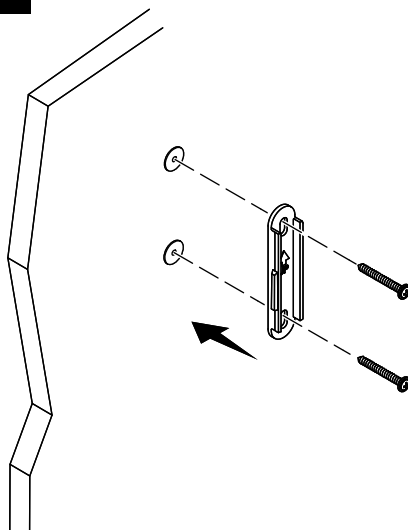
This product is covered under the **KOHLER® India Faucet, Sanitaryware and Bathing Products Limited Warranty**, found at kohler.co.in/warranty.



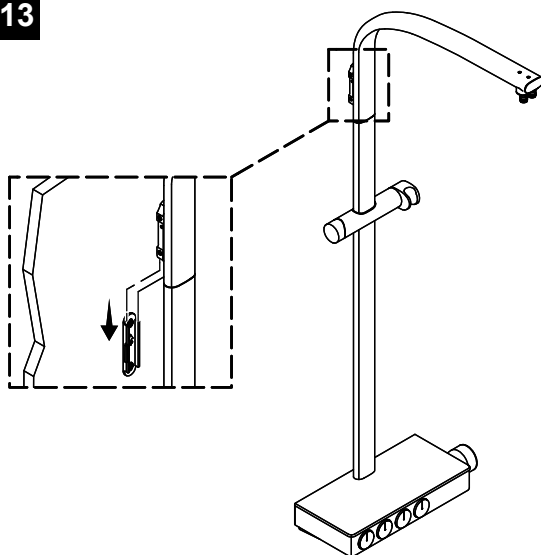
11



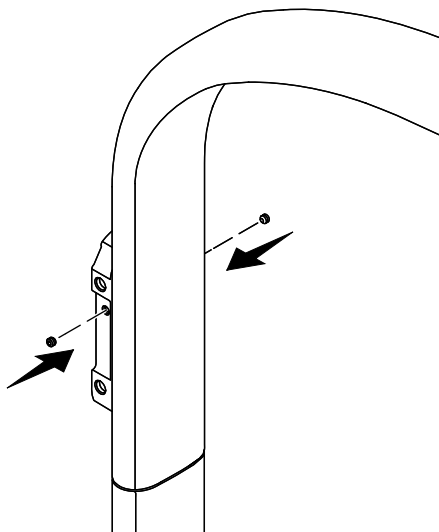
12



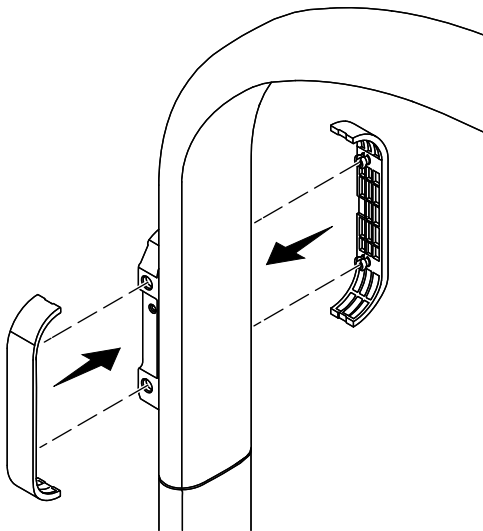
13



14



15



16

