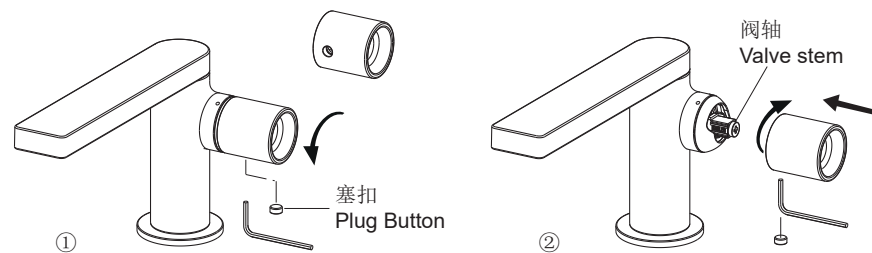


①取下把手底部的塞扣，用六角扳手旋松把手里面的螺钉。旋转并取下把手。
Uninstall the plug button, loosen the screw in the handle by hex wrench. Rotate the handle and then remove it.

②将新把手装到阀轴上，使把手底部的孔朝下，旋紧螺钉塞上塞扣。检查安装。
Install the new handle onto the valve stem, make sure the hole downwards. Tighten the screw in the handle, press the plug button into the hole. Check it.

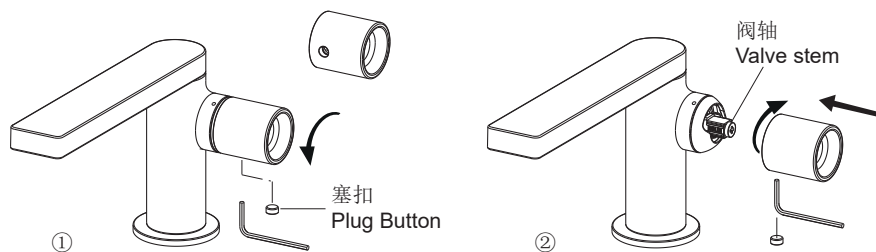
1479746-T2-A



①取下把手底部的塞扣，用六角扳手旋松把手里面的螺钉。旋转并取下把手。
Uninstall the plug button, loosen the screw in the handle by hex wrench. Rotate the handle and then remove it.

②将新把手装到阀轴上，使把手底部的孔朝下，旋紧螺钉塞上塞扣。检查安装。
Install the new handle onto the valve stem, make sure the hole downwards. Tighten the screw in the handle, press the plug button into the hole. Check it.

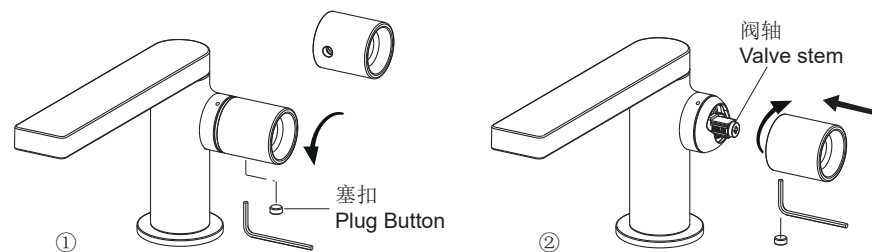
1479746-T2-A



①取下把手底部的塞扣，用六角扳手旋松把手里面的螺钉。旋转并取下把手。
Uninstall the plug button, loosen the screw in the handle by hex wrench. Rotate the handle and then remove it.

②将新把手装到阀轴上，使把手底部的孔朝下，旋紧螺钉塞上塞扣。检查安装。
Install the new handle onto the valve stem, make sure the hole downwards. Tighten the screw in the handle, press the plug button into the hole. Check it.

1479746-T2-A



①取下把手底部的塞扣，用六角扳手旋松把手里面的螺钉。旋转并取下把手。
Uninstall the plug button, loosen the screw in the handle by hex wrench. Rotate the handle and then remove it.

②将新把手装到阀轴上，使把手底部的孔朝下，旋紧螺钉塞上塞扣。检查安装。
Install the new handle onto the valve stem, make sure the hole downwards. Tighten the screw in the handle, press the plug button into the hole. Check it.

1479746-T2-A