

32941T-4 单把感应脸盆龙头
32942T-4 单把感应碗盆龙头

安装之前

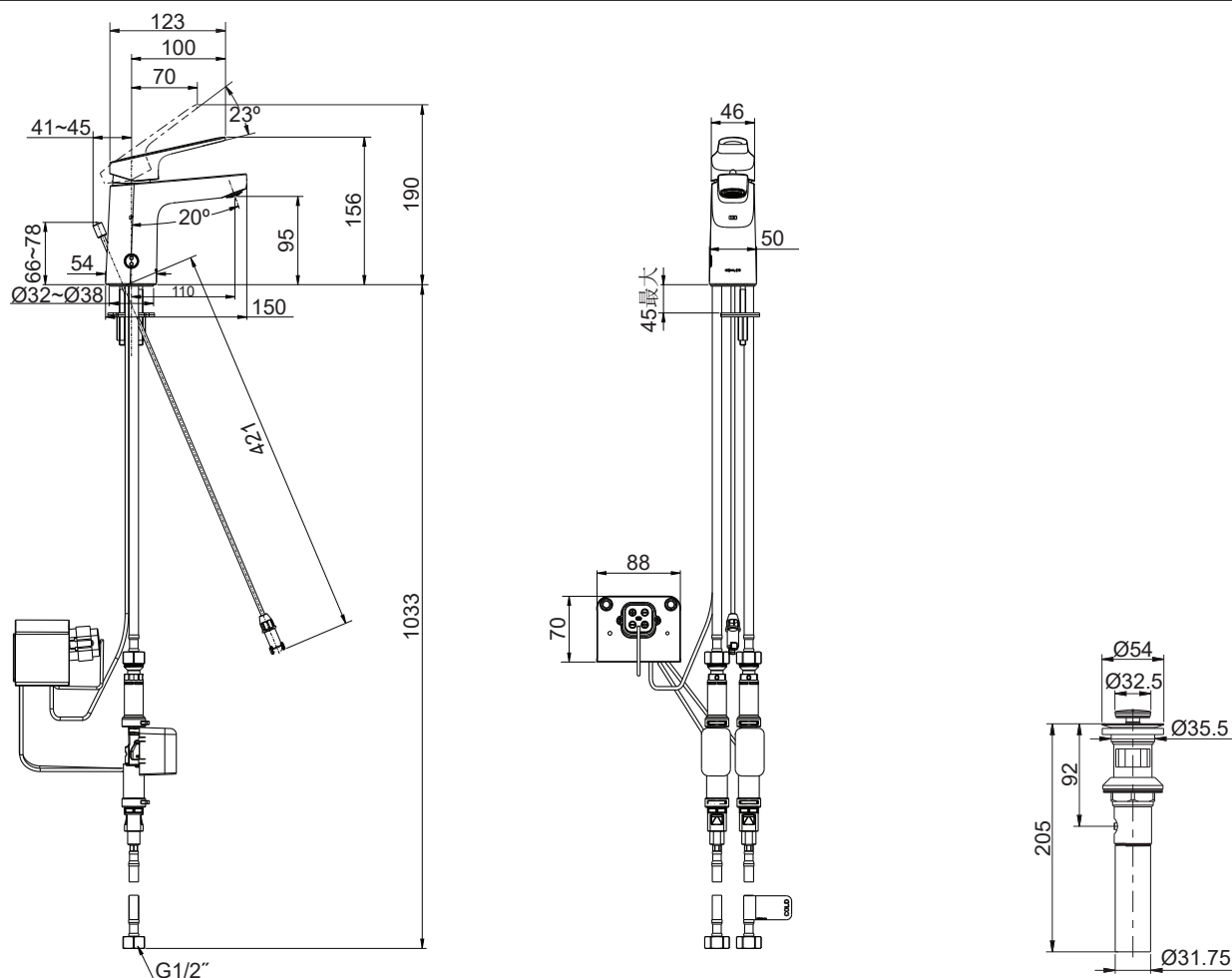
所有的资料是按最新出版的产品资料编写而成。科勒公司保留任何时候不经通知即可改变产品特性、包装或产品可供类型的权利。

说明书包括重要的安装、保养及清洁方面的内容，请把这些资料交给用户阅读。

注意事项:

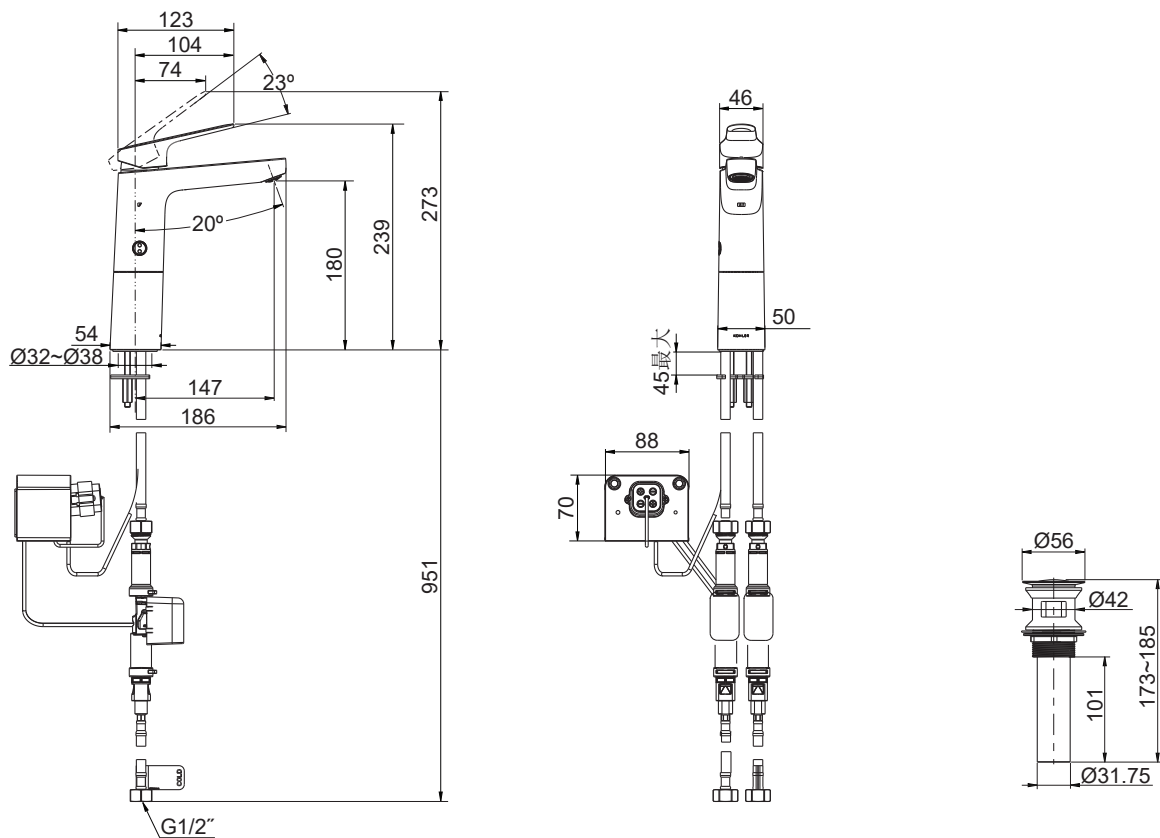
1. 一定要先彻底冲洗供水管以清除管道中的杂质。
2. 尽可能在安装脸盆之前安装水龙头。
3. 最高工作压力: 0.5MPa(5bar)。水压超过0.5MPa(5bar)时必须安装减压阀。
4. **人身损害或财产损失风险。**开始安装前, 请从头到尾阅读产品说明。
5. 严格遵守一切管道铺设、电气和建筑规范。
6. **产品损坏风险。**本产品含有敏感的电子元件。切勿将打开的化学或清洁产品容器存放在本产品附近。
7. 留出足够的维修空间: 安装水龙头之前, 确保水槽下面的区域能够容纳所有需要的组件。

安装尺寸



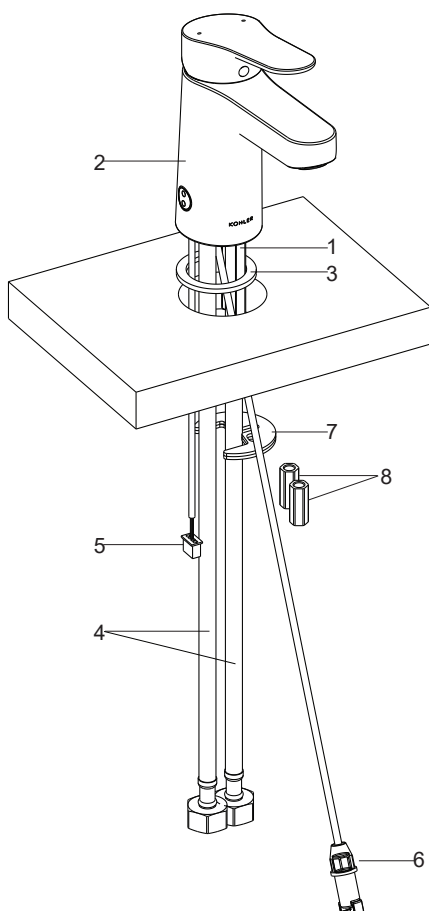
32941T-4

水嘴加施的水效标识表明本产品的水效等级等性能符合GB25501-2019《水嘴水效限定值及水效等级》的要求，是产品符合性的一种标识。



32942T-4

安装步骤

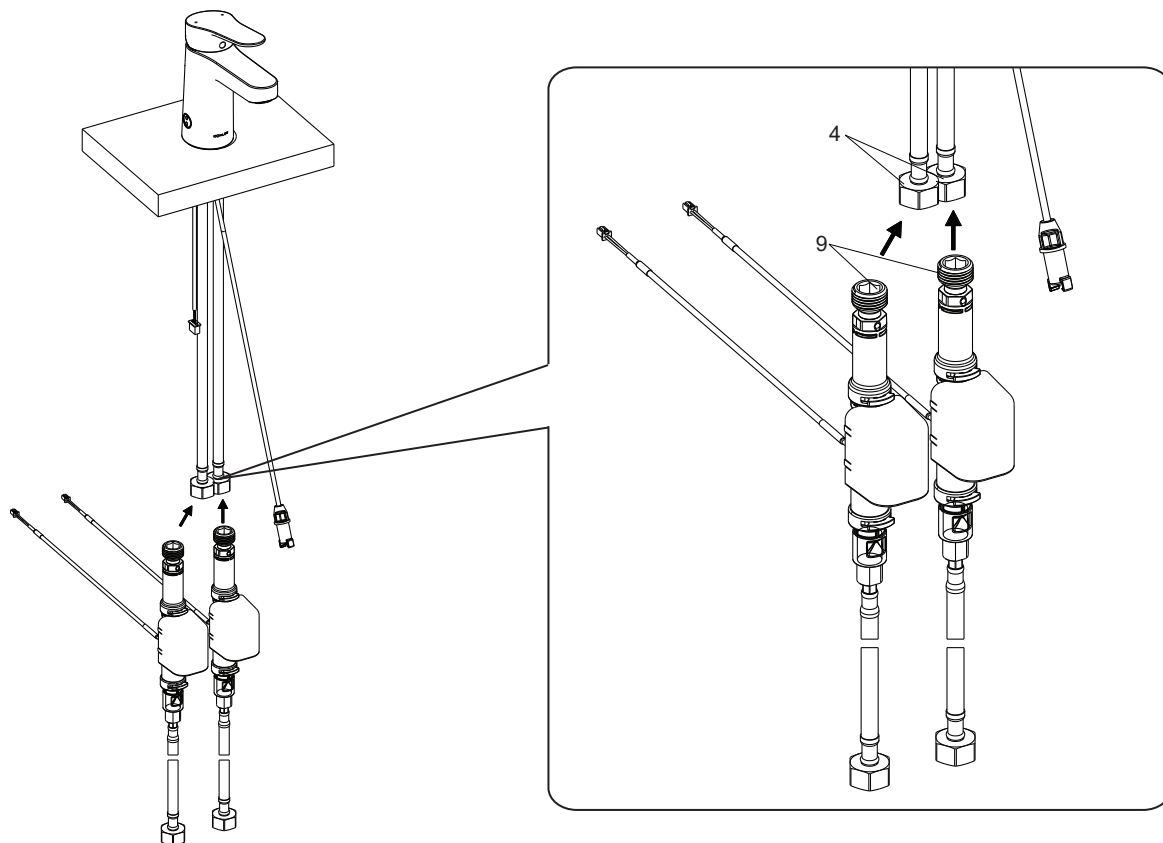


如何安装出水口

将固定螺栓(1)安装到水龙头(2)底部，将背胶垫片(3)穿过软管(4)、固定螺栓、传感器组件(5)和提拉线缆末端(6，仅对于**32941T**)嵌入到水龙头底部。

将水龙头组件插入脸盆安装孔中，使水龙头底部接触台面。

调整水龙头，从脸盆的下方把垫片(7，橡胶垫片放在上面)穿入固定螺栓，锁紧螺母(8)以固定水龙头。

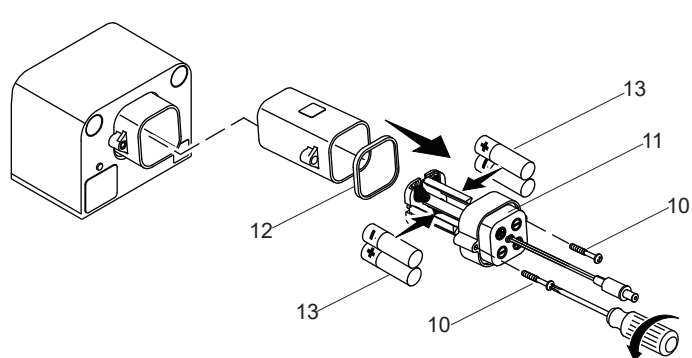


如何安装电磁阀

重要！限流风险。 安装过程中，软管(4)不得绷紧或打结。

注意：用手拧紧软管接头。不要使用钳子或扳手。

用手将软管(4)接头安装到电磁阀(9)上，确保拧紧。



如何安装电池盒

警告：请勿使用锂离子电池，锂离子电池与水接触会引起火灾。

重要！请勿使用可充电电池。

重要！请勿混用新旧电池。

松开两颗螺钉(10)，取下电池盒盖(11)和垫片(12)。

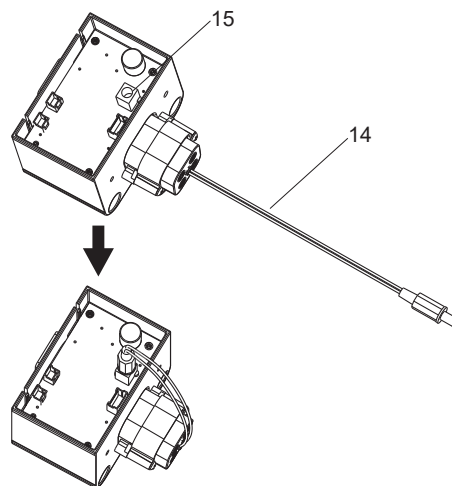
将四节5号电池(13)按正确方向插入电池盒中。

放回垫片，重新安装电池盒盖，并用螺钉锁紧。

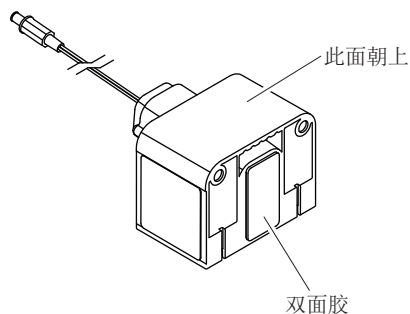
将电池盒放入控制盒内部。

将电池线缆(14)插到阀盒的电源座(15)。

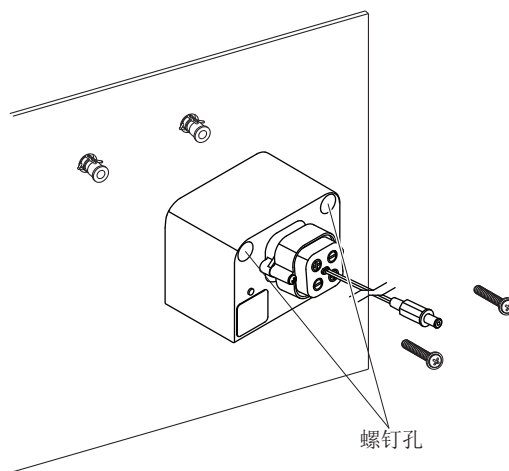
电池更换时，确认阀盒上的传感器未被激活。



安装方式1



安装方式2



如何安装控制盒

将控制盒安装到柜子内部墙上。

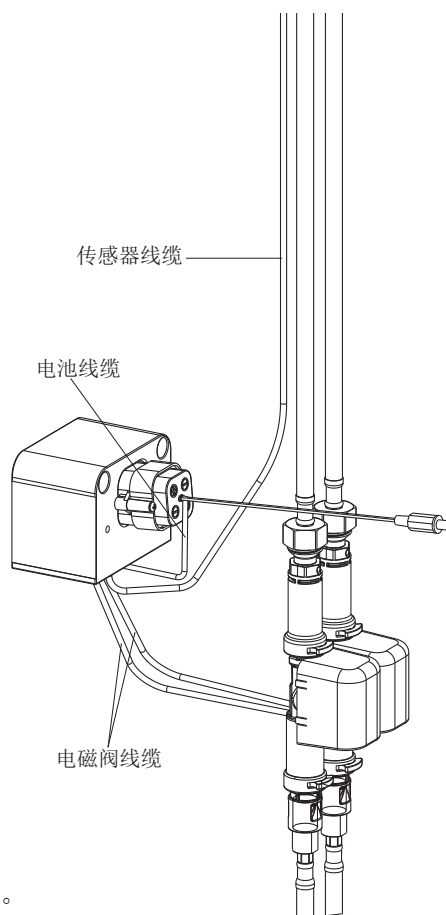
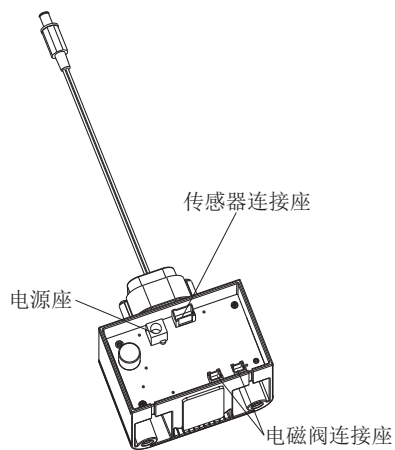
安装控制盒前，请确认安装位置是否允许连接传感器线缆和电磁阀线缆。

在墙上标记控制盒的位置，并确定最佳安装方式：

安装方式1：用自带双面胶将控制盒粘到墙上。

安装方式2：使用随附的两个螺钉将控制盒固定到墙上。

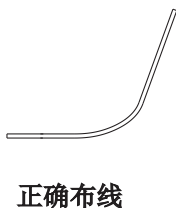
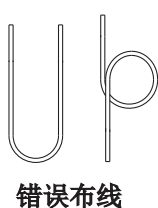
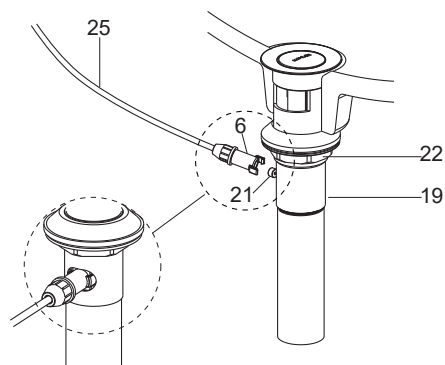
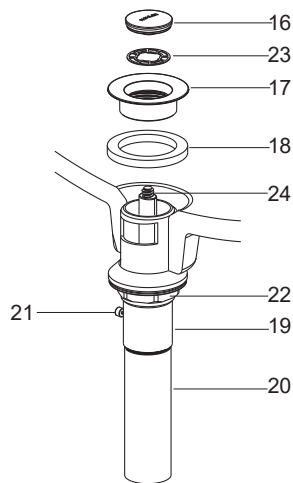
检查控制盒是否水平，电池盒是否牢固安装在控制盒上。



如何连接控制盒

如图所示，电磁阀线缆、传感器线缆、电池线缆分别与控制盒连接。

检查线缆是否与软管缠绕，移动软管是否顺畅。



如何安装排水器 (仅用于32941T)

将止水塞(16)、法兰盘(17)及垫片(18)从排水本体(19)上取下。从排水本体上取下尾管(20)。用密封胶带(生料带)在排水器尾管的螺纹上缠几圈，再装回到排水本体上。把排水本体组件从脸盆下方插到脸盆中，磁扣接头(21)朝向脸盆后方。

把法兰盘(17)带垫片旋入排水本体中。确保磁扣接头指向脸盆后方，用扳手拧紧排水本体上的锁紧螺母(22)。将滤网垫片(23)放入法兰盘中。把止水塞(16)旋到活塞组件(24)上。

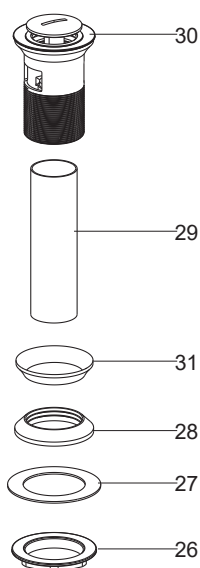
注意：如果需要，可直接在法兰盘(17)底面沿周围涂一圈密封油灰或其他密封剂，而不使用垫片(18)。

将提拉线缆末端(6)与线缆排水器的磁扣接头(21)连接，并确保卡扣扣紧。

注意：在锁紧螺母拧紧后，如法兰盘使用密封油灰或其他密封剂，则不可以调整排水本体位置，否则会破坏油灰或其他密封剂的密封性。同时去除多余油灰。

在排水器安装完成后，请务必检查提拉线缆(25)是否正确安装，避免过于曲折或打结缠绕，确保提拉顺畅。如图所示。

如何安装排水器 (仅用于32942T)



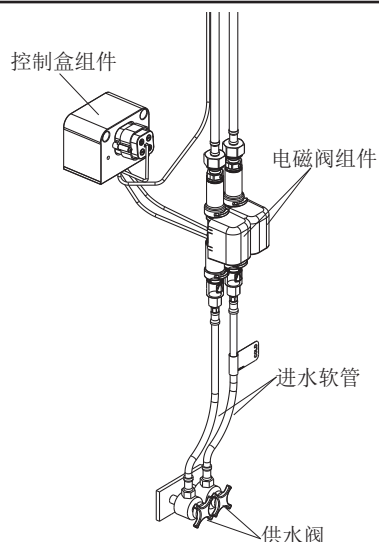
把锁紧螺母(26)、塑料垫片(27)、橡胶垫圈(28)和尾管(29)从排水本体上依次取下。在尾管螺纹处须缠绕足以密封的密封胶带或涂合适的密封胶，装回排水本体。

把排水本体从脸盆上部孔插入。再依次将橡胶垫圈(小面朝上)、塑料垫片和锁紧螺母从排水本体底部装入。将锁紧螺母锁紧。

注意：在锁紧螺母拧紧后，不可调整排水本体的位置，否则会破坏油灰密封或密封剂密封。

注意：如果需要，可直接在排水器盘片(30)底面沿周围涂一圈密封油灰或其他密封剂，而不使用橡胶垫片(31)。

安装结果检查

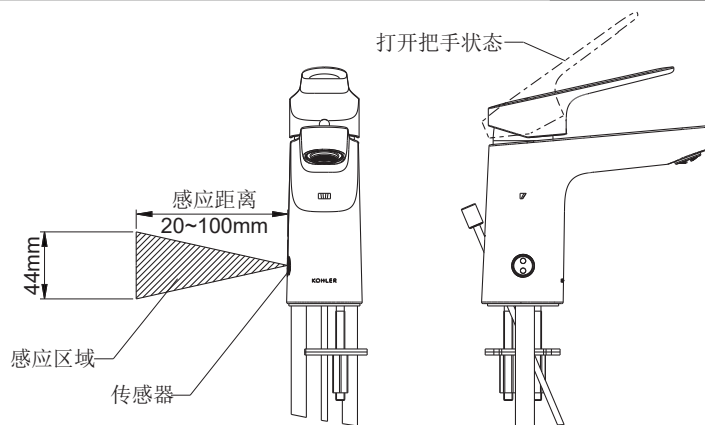


检查并确保所有衔接处都已拧紧。

确保把手在关闭位置。

打开供水阀，检查并修理有漏水的接口。

使用说明



如何操作龙头

注意：长时间不使用时，应将把手返回到关闭位置。传感器需远离蒸汽。

1. 向上抬起把手到开启位置。
2. 调节把手至所需的温度。
3. 传感器在通电后进行最长15秒的自学习时间。通电时确保感应窗口前无任何遮挡，避免影响感应距离。在传感器前面100mm内挥手，传感器灯环呈现呼吸灯效果，每10秒亮一次，同时启动水流。
4. 再次在传感器前面挥手关闭水流，传感器灯环不亮。

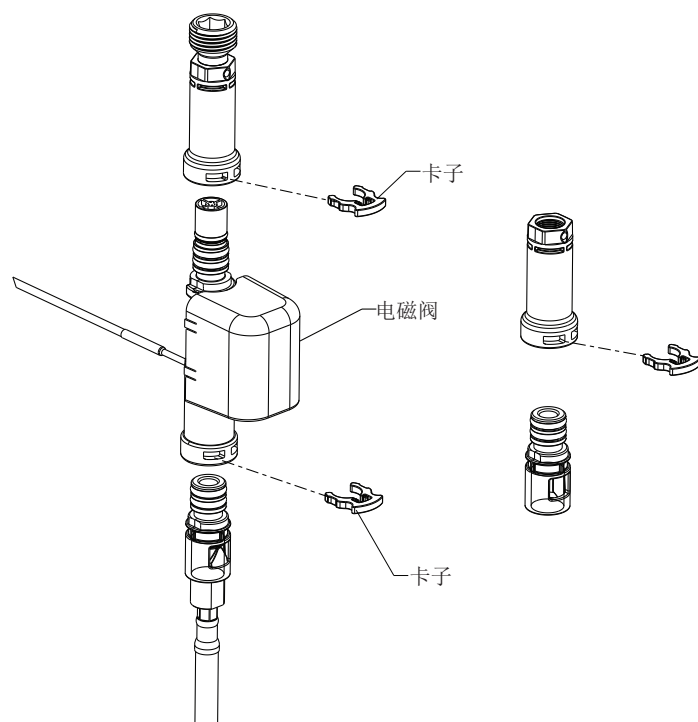
传感器特征

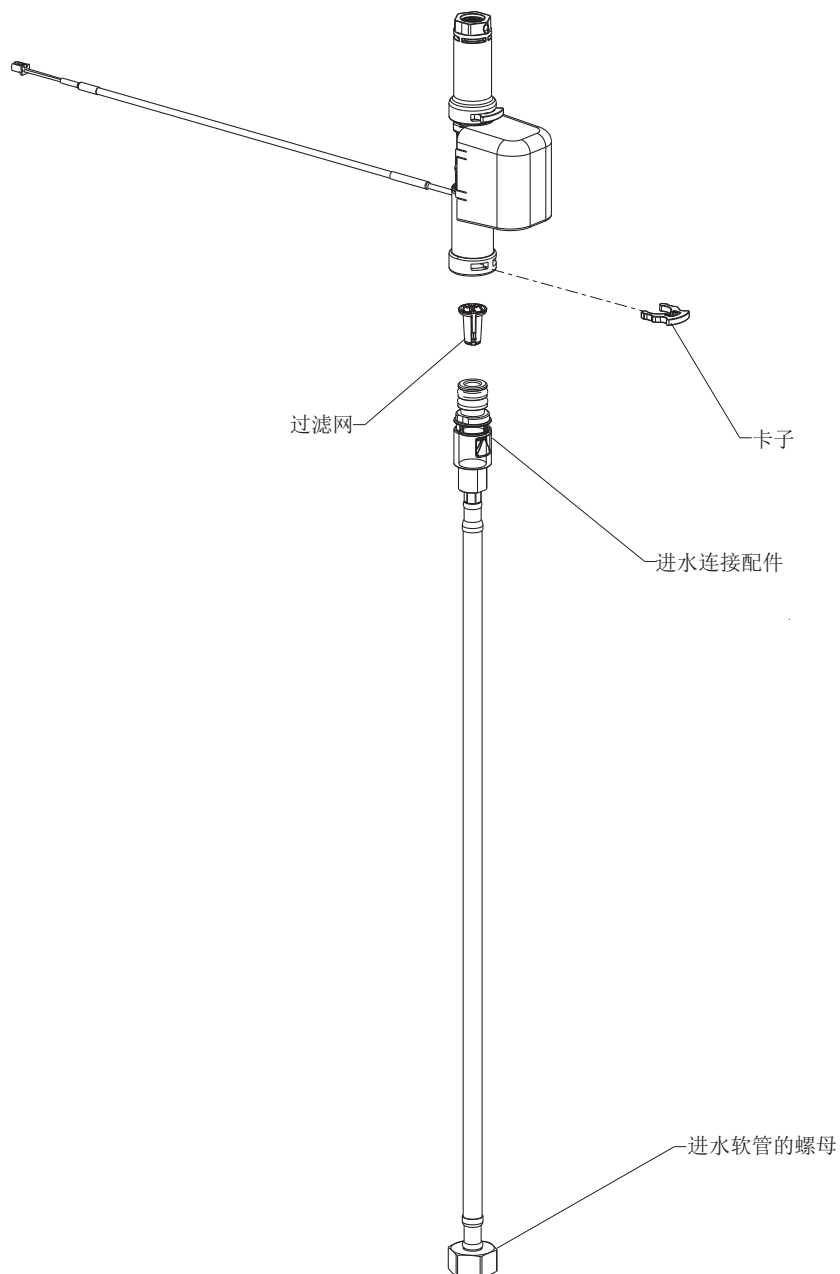
1. 自动关闭功能：水流持续出水4分钟后，水将自动关闭。
2. 低电量指示功能：当启动传感器后，传感器灯环每6秒连续闪烁三次，表示低电量，水龙头可继续运行。
3. 无电量指示功能：当用户触发传感器，传感器灯环每3秒连续闪烁显示三次，三个周期后熄灭，表示电池无电量，水龙头无法工作。

如何手动操作

当电磁阀不能正常工作，手动拆掉电磁阀，水龙头可以继续使用。

1. 关闭进水阀，打开把手至开启位置，释放水压。
2. 如图所示拆下卡子。
3. 取下电磁阀。
4. 将拆下的一个卡子将配件连接在一起。
5. 接通进水阀，打开把手，水龙头可以继续使用。
6. 按照相反的步骤可重新连接电磁阀。





如何清洗过滤器

1. 将把手旋转到关闭位置。
2. 关闭进水阀。
3. 用手松开进水软管的螺母，断开进水软管。
4. 从进水连接配件处拆下卡子。
5. 拆卸并清洗过滤网。
6. 将滤网放进电磁阀中，将进水连接配件重新安装到电磁阀上。
7. 将卡子重新插到电磁阀，直到听到咔哒声。

故障检修

警告：产品损坏风险。本产品含有敏感的电子元件。在故障排除过程中，小心不要损坏线缆和接头。

故障现象	可能的原因	推荐解决方式
1. 产品不出水。	A. 供水阀关闭。 B. 龙头把手关闭。 C. 电磁阀未启动。 D. 滤网堵塞。	A. 确认供水阀打开。 B. 提起把手至打开位置。参考“使用说明”。 C. 参考第4点的电磁阀未启动故障。 D. 参考“维护与保养”，清洗电磁阀以及起泡器滤网。
2. 低水流。	A. 供水阀部分关闭。 B. 龙头把手部分关闭。 C. 过滤器堵塞。 D. 电磁阀故障。	A. 确认供水阀完全打开。 B. 提起把手至完全打开位置。 C. 参考“维护与保养”，清洗过滤器。 D. 联系就近的科勒公司授权的专业维修人员。
3. 水龙头不使用时滴水或滴漏。	A. 电磁阀故障。	A. 联系就近的科勒公司授权的专业维修人员。
4. 电磁阀未启动。	A. 线路连接错误或未连接到位。 B. 电池电量不足或耗尽。 C. 电磁阀故障。	A. 参考“安装步骤”，重新连接线路，确保连接到位。 B. 参考“使用说明”，检测是否有低电量提醒或无电量提醒，如有，参照电池安装说明更换电池。 C. 联系就近的科勒公司授权的专业维修人员。
5. 传感器间歇性启动。	A. 感应窗口表面有杂质。	A. 用中性肥皂水轻轻地去掉感应窗口表面上的杂质。

有害物质统计表

部件名称	有害物质					
	铅 (Pb)	汞 (Hg)	镉 (Cd)	六价铬 (Cr(VI))	多溴联苯 (PBB)	多溴二苯醚 (PBDE)
控制盒组件	○	○	○	○	○	○
电磁阀组件	○	○	○	○	○	○
感应探头组件	○	○	○	○	○	○
龙头组件	×	○	○	×	○	○

本表格依据SJ/T 11364的规定编制。
○：表示该有害物质在该部件所有均质材料中的含量均在GB/T 26572现行有效版本规定的限量要求以下。
×：表示有害物质至少在该部件的某一均质材料中的含量超出GB/T 26572现行有效版本规定的限量要求。
注：本表格提供的信息是基于供应商提供的数据及科勒公司的检测结果。
本产品应用环保设计理念，在当前技术水平下，所有有害物质的使用已经控制到了最低程度，科勒公司会继续努力通过改善现有技术来减少这些物质的使用。



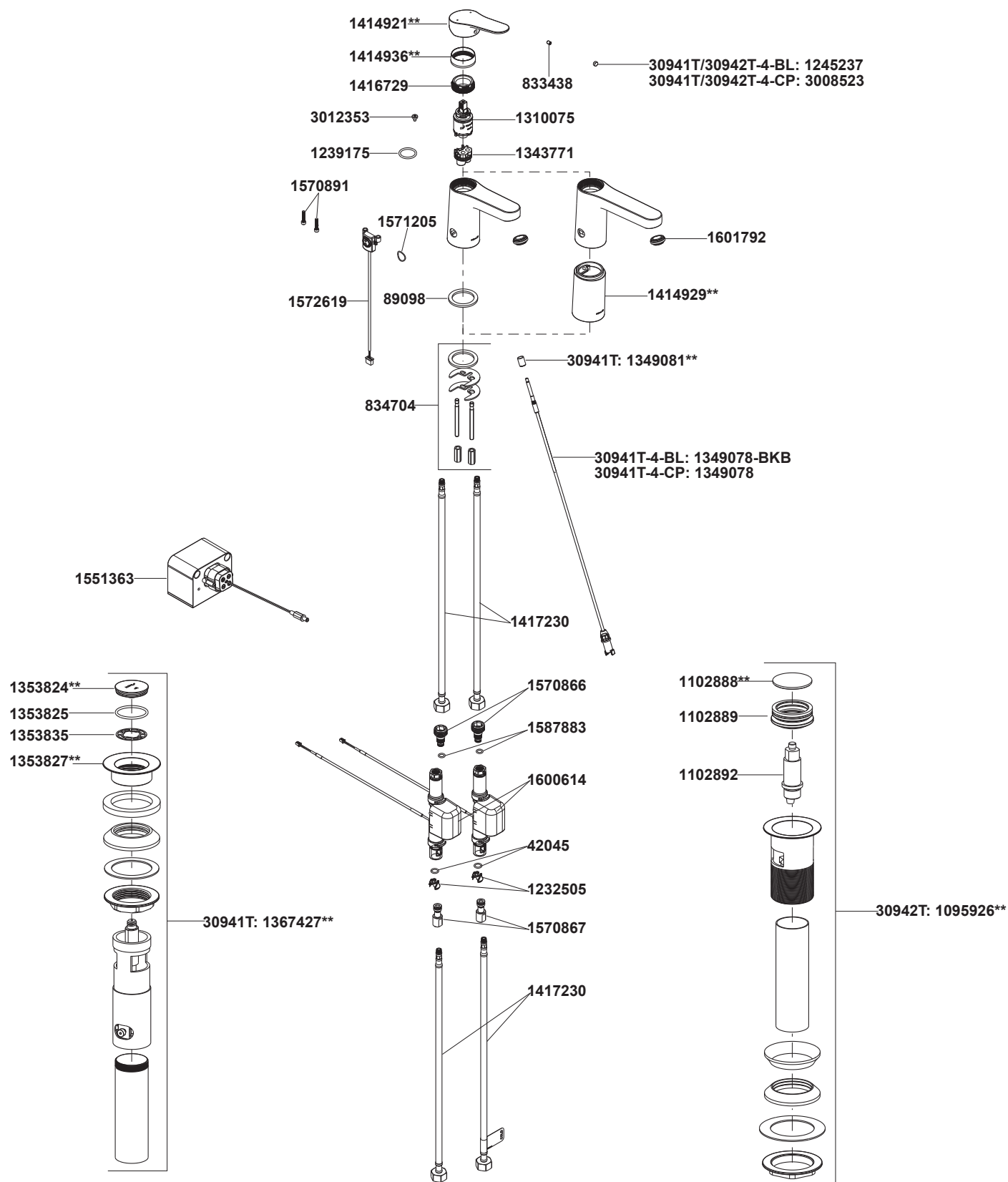
本产品的“环保使用期限”为10年，科勒公司根据产品设计特性指定该期限。只有在本产品使用说明书所述的正常情况下使用本产品时，“环保使用期限”才有效。

清洗说明

适用于所有加工处理过的表面：以中性肥皂水清洗镀层表面，再以干净软布彻底擦干整个表面，许多清洁剂，比如氨水、去污粉及洁厕灵等，会对电镀表面造成伤害，切忌使用。

有磨损性的清洁用具或清洁剂也不可用于科勒牌的水龙头及其配件上。

32941T-4 单把感应脸盆龙头 32942T-4 单把感应碗盆龙头



**订购时请说明颜色编号

32941T-4 Single Handle Touchless Lavatory Faucet 32942T-4 Tall Single Handle Touchless Lavatory Faucet

BEFORE YOU BEGIN

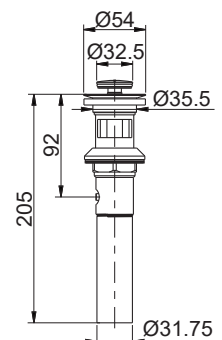
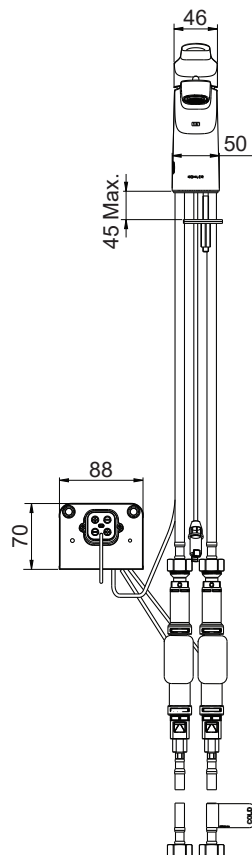
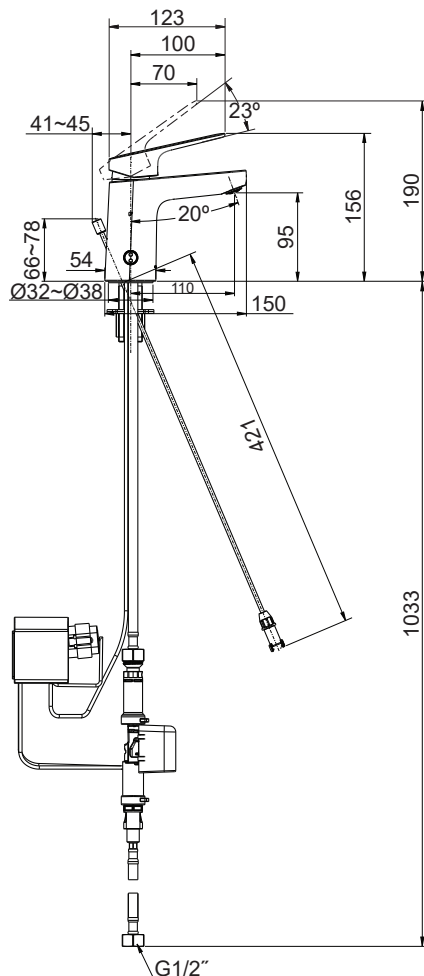
All information is based on the latest product information available at the time of publication. Kohler Co. reserves the right to make changes in product characteristics, packaging, or availability at any time without notice.

Please leave these instructions for the consumer. They contain important information.

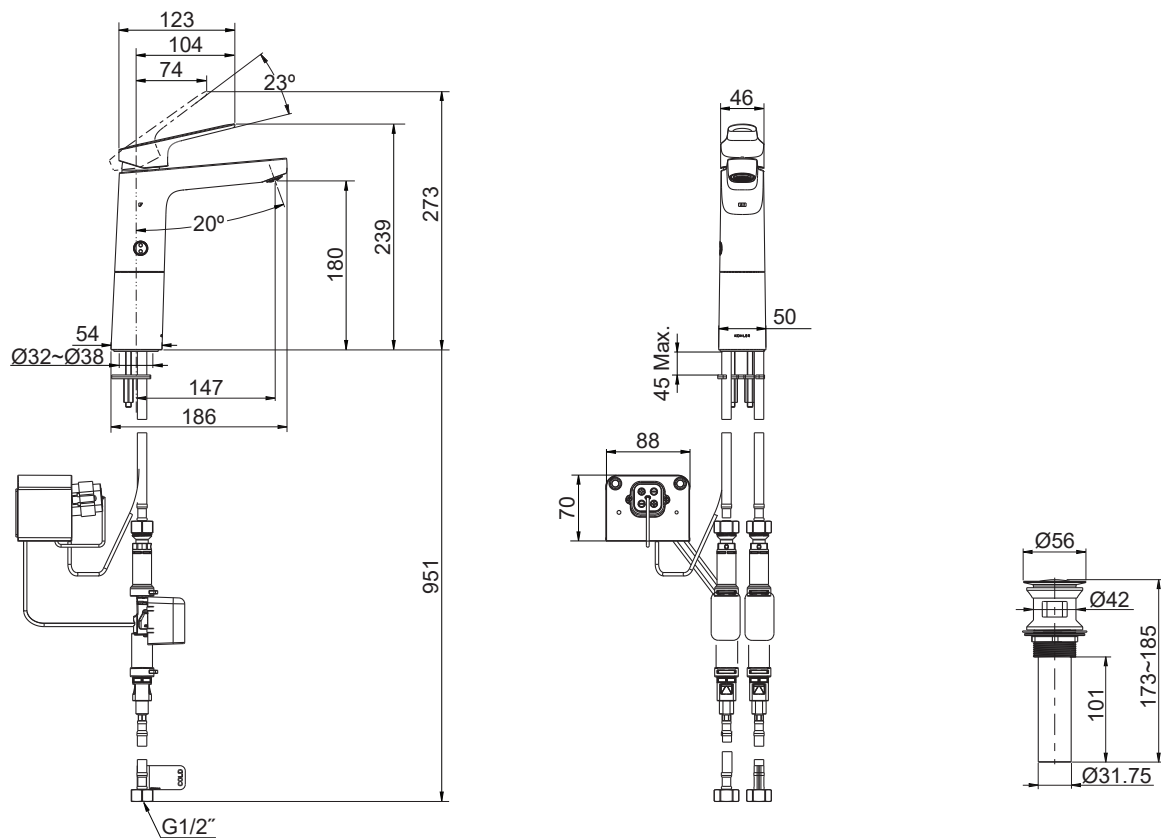
NOTE:

1. Flush the water supply pipes thoroughly to remove debris.
2. If possible, install this faucet before installing the lavatory.
3. The highest working pressure is 0.5MPa(5bar). If it exceeds 0.5MPa(5bar), a pressure reducer is needed.
4. **Risk of injury or property damage.** Please read all instructions thoroughly before beginning installation.
5. Follow all plumbing, electrical, and building codes.
6. **Risk of product damage.** This product contains sensitive electronic components. Do not store open containers of chemical or cleaning products near this product.
7. Allow adequate clearance for servicing. Before installing the faucet make sure the area under the lavatory can accommodate all of the required components.

ROUGH-IN DIMENSIONS

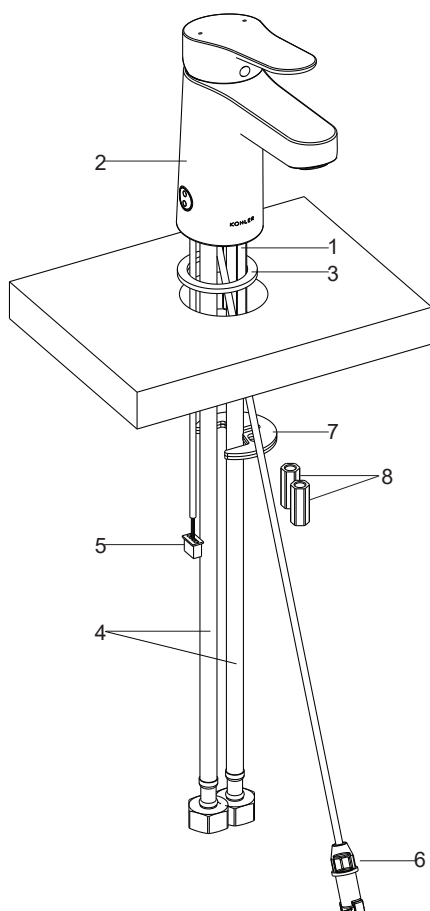


32941T-4



32942T-4

INSTALLATION

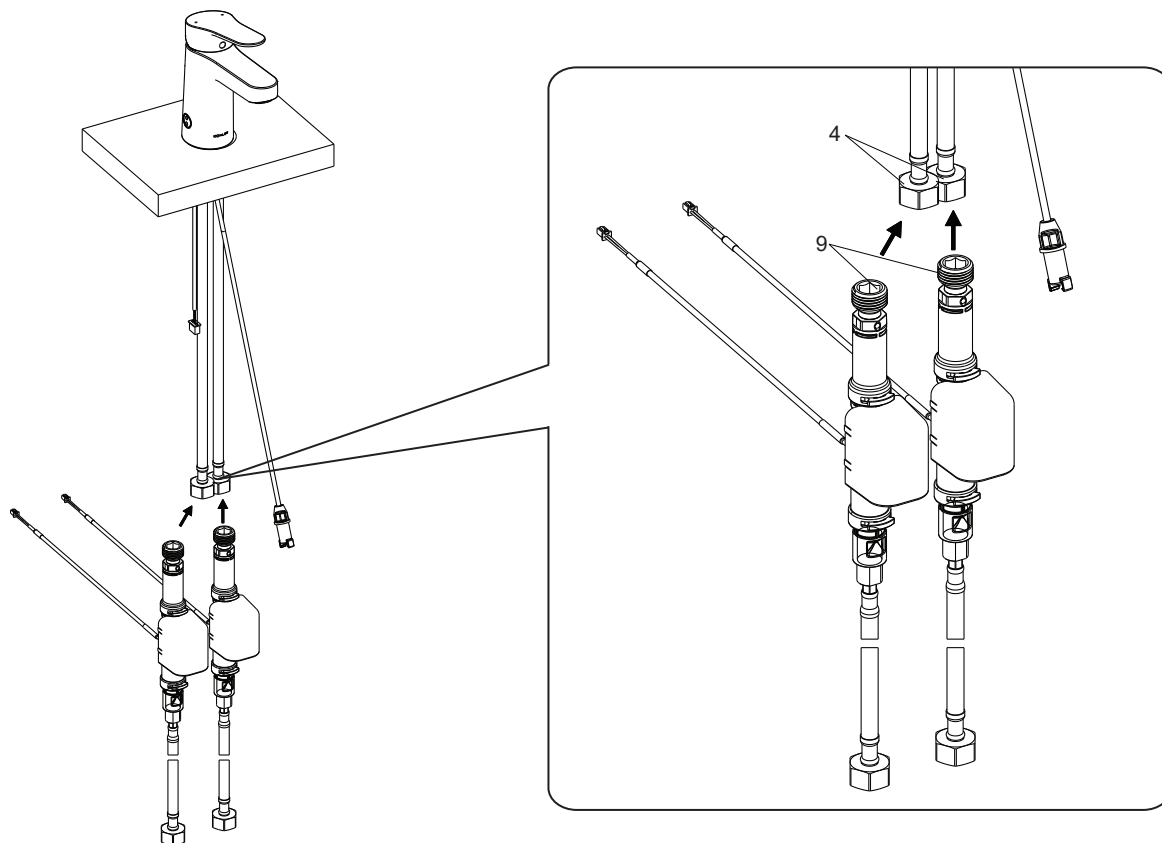


How to Install the Spout

Install the mounting studs(1) into the faucet(2) bottom. Slide the adhesive washer(3) over the hoses(4), mounting studs, sensor assembly(5) and cable end(6, only for **32941T**) until it is put into the faucet bottom.

Insert the faucet assembly into the lavatory hole until the faucet bottom is against the deck.

Position the faucet. From underside of the lavatory, place the washers(7, rubber washer is on the top) onto the mounting studs, and tighten the nuts(8) to secure the faucet.

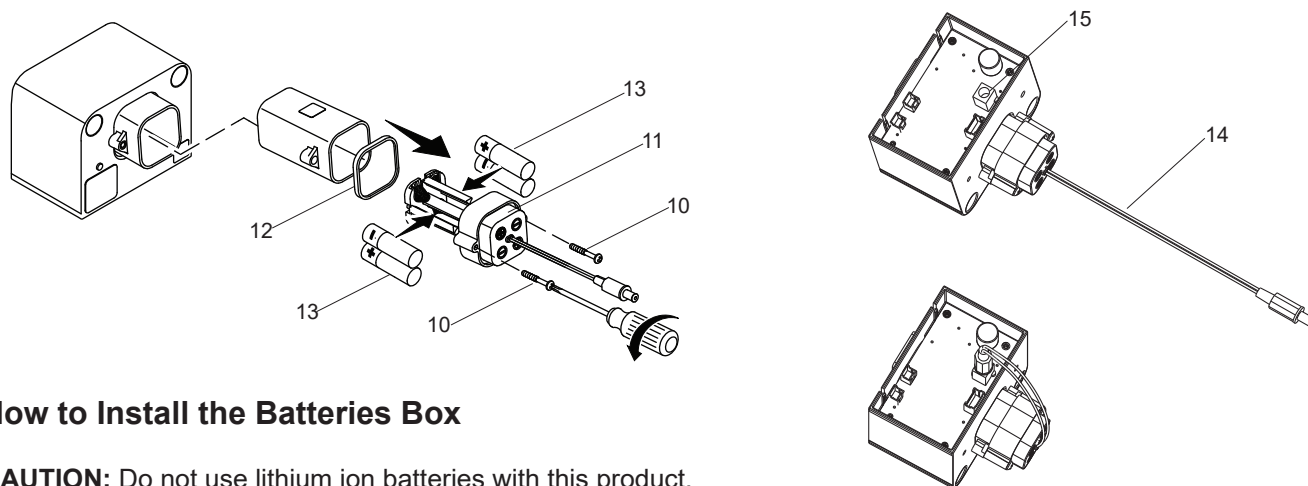


How to Install the Valve Box

IMPORTANT! Risk of restricted waterflow. The hoses(4) must not be taut or kinked when installed.

NOTE: Tighten the hose connector by hand. Do not use a pliers or a wrench.

Tighten the hose(4) connector onto the the valve box(9) by hand.



How to Install the Batteries Box

CAUTION: Do not use lithium ion batteries with this product.

IMPORTANT! Do not use rechargeable batteries.

IMPORTANT! Do not mix old and new batteries.

Loosen the two screws(10) to remove the battery box cover(11) and gasket(12).

Insert four AA batteries(13) in the correct orientation in the battery box.

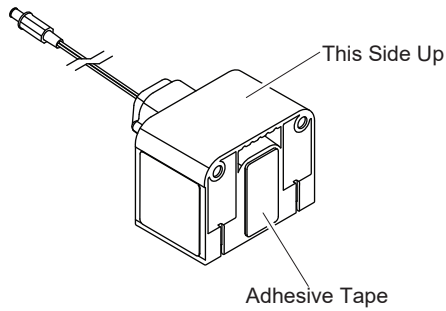
Reinstall the gasket and battery box cover, tighten with the screws.

Place the battery box into the slot of the control box.

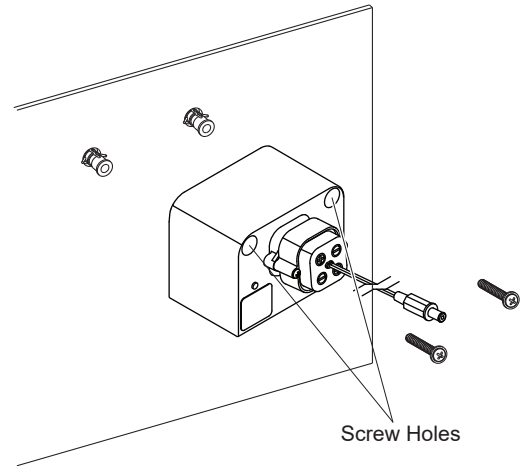
Connect the battery cable(14) to the power connector(15) on the valve box.

For battery replacement, ensure the sensor on the valve box has not been activated.

Option 1



Option 2



How to Install the Control Box

Attach the control box to the wall on the back of the cabinet.

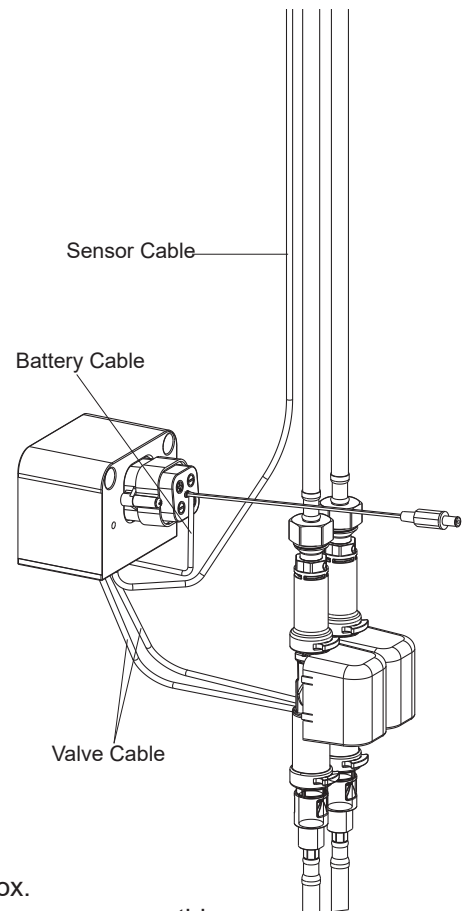
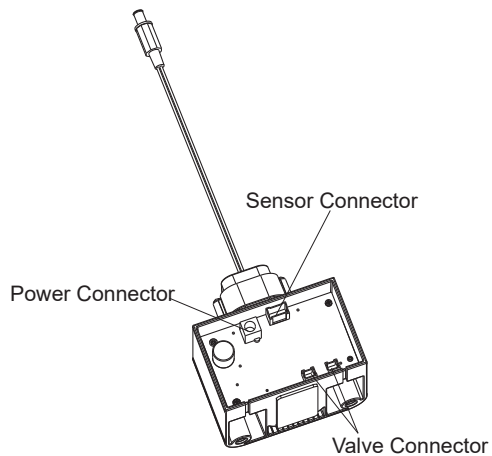
Before mounting the control box, verify the location allows for the sensor cable and valve cable to be connected.

Mark the control box location on the wall and determine the best mounting option:

Option 1: Use the adhesive tape to attach the control box to the wall.

Option 2: Use the two provided screws to secure the control box to the wall.

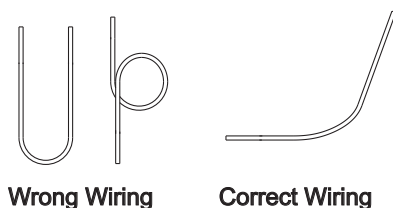
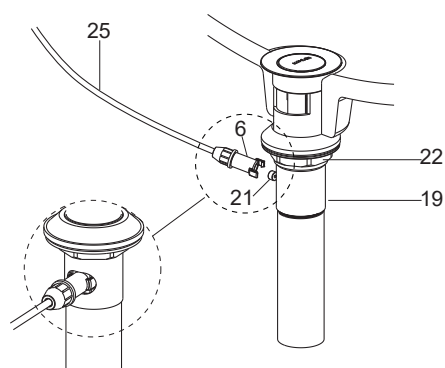
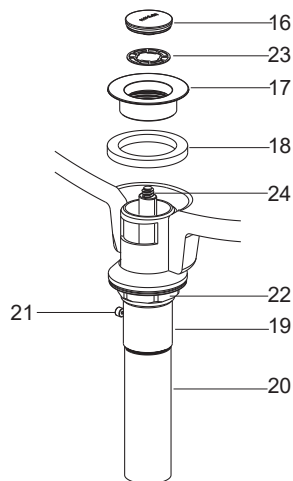
Verify that the control box is level and that the battery box stays securely mounted in the control box.



How to Connect the Control Box

Connect the valve cable, sensor cable, battery cable to the control box.

Verify that the cables are not tangled with the hoses and that the hose moves smoothly.



How to Install the Drain(Only for 32941T)

Remove the stopper(16), flange(17) and washer(18) from the drain body(19). Take off the tailpiece(20). Apply thread tape to tailpiece and install the tailpiece to the drain body. Insert the drain body kit into the lavatory from underside, and make sure the magnetic snap(21) in the drain facing to the back of the lavatory.

Screw the flange(17) with washer into the drain body. Ensure the magnetic snap points to the back of the lavatory, tighten the locknut(22) on the drain body with wrench. Put the filter(23) into the flange. Screw the stopper(16) on the piston kit(24).

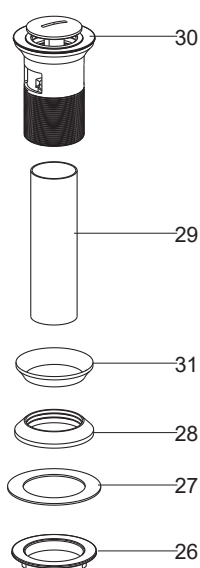
NOTE: If needed, apply a ring of plumbers putty or other sealants around the underside of the drain flange(17), instead of using washer(18).

Install the cable end(6) into the magnetic snap(21), ensure the buckle is locked.

NOTE: Do not reposition the drain if plumbers putty or other sealants applied after the locknut is tightened, or you may break the putty or sealant seal. Wipe away excess plumbers putty.

After the installation, please check if the cable(25) is connected properly. Do not overbend or twine the cable as shown.

How to Install the Drain(Only for 32942T)



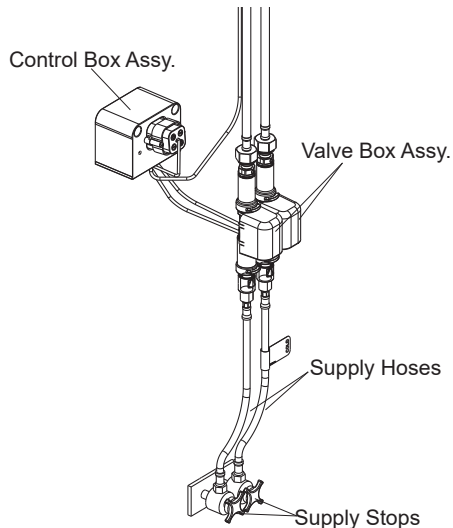
Remove the locknut(26), plastic washer(27), rubber gasket(28) and tailpiece(29) from the drain body. Supply enough tape or sealant to tailpiece thread. Reinstall the tailpiece.

Insert the drain body into the lavatory. Put the rubber gasket(Tapered side up), plastic washer and locknut back to the drain body in turn. Tighten the locknut.

NOTE: Do not reposition the drain after the locknut is tightened, or you may break the putty or sealant seal.

NOTE: If needed, apply a ring of plumbers putty or other sealants around the underside of the drain flange(30), instead of using rubber washer(31).

INSTALLATION CHECKOUT



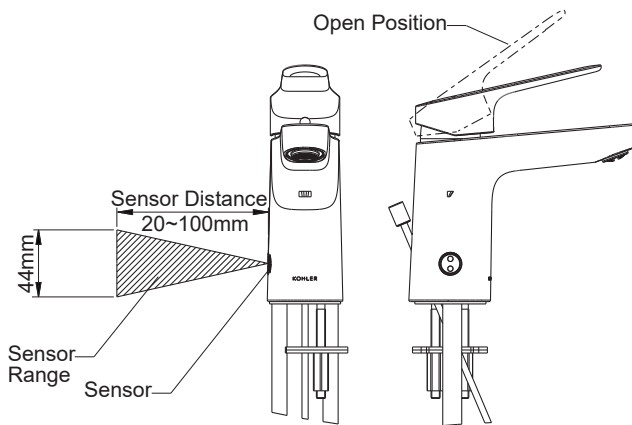
Ensure that all connections are tight.

Ensure that the lever handle is in the off position.

Turn on the supply stops.

Check all connections for leaks. Repair as needed.

OPERATION INSTRUCTION



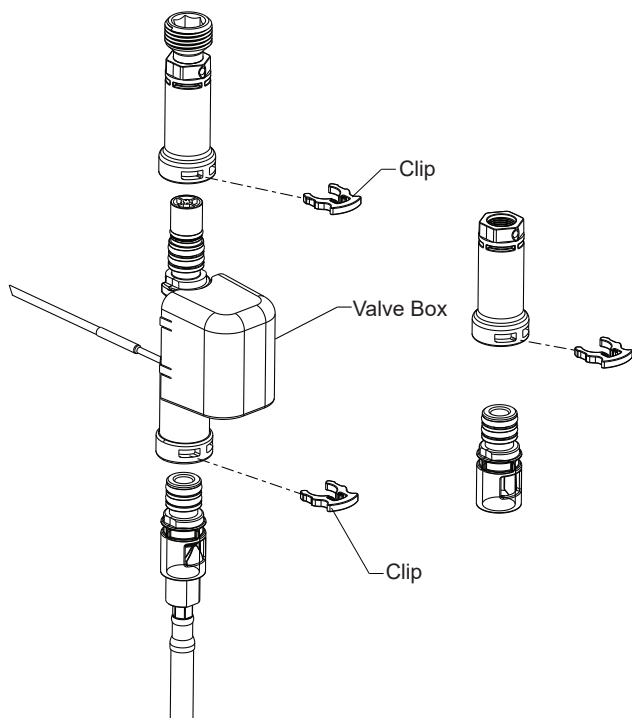
How to Operate the Faucet

NOTE: For extended periods of nonuse, the handle should be returned to the closed position. Keep the sensor away from the steam.

1. Lift the handle to the open position.
2. Adjust the handle to the desired water temperature.
3. The sensor will be self-learning for maximum 15 seconds after power on. Ensure that there is no obstruction in front of the sensor window when power on to avoid affecting the sensing distance. Wave your hand within 100mm in front of the sensor, and the sensor light ring will display a breathing light effect. It will light up every 10 seconds and start the water flow at the same time.

Sensor Features

1. Automatic shut-off: After 4 minutes of activity, the water will automatically shut OFF.
2. Low power indication: When the sensor starts, the sensor light ring will blink continuously three times every 6 seconds to indicate low power. The faucet will remain operational.
3. No power indication: When you trigger the sensor, the sensor light ring will blink continuously three times every 3 seconds, and goes off after three cycles, indicating that the battery is low and the faucet is not operational.

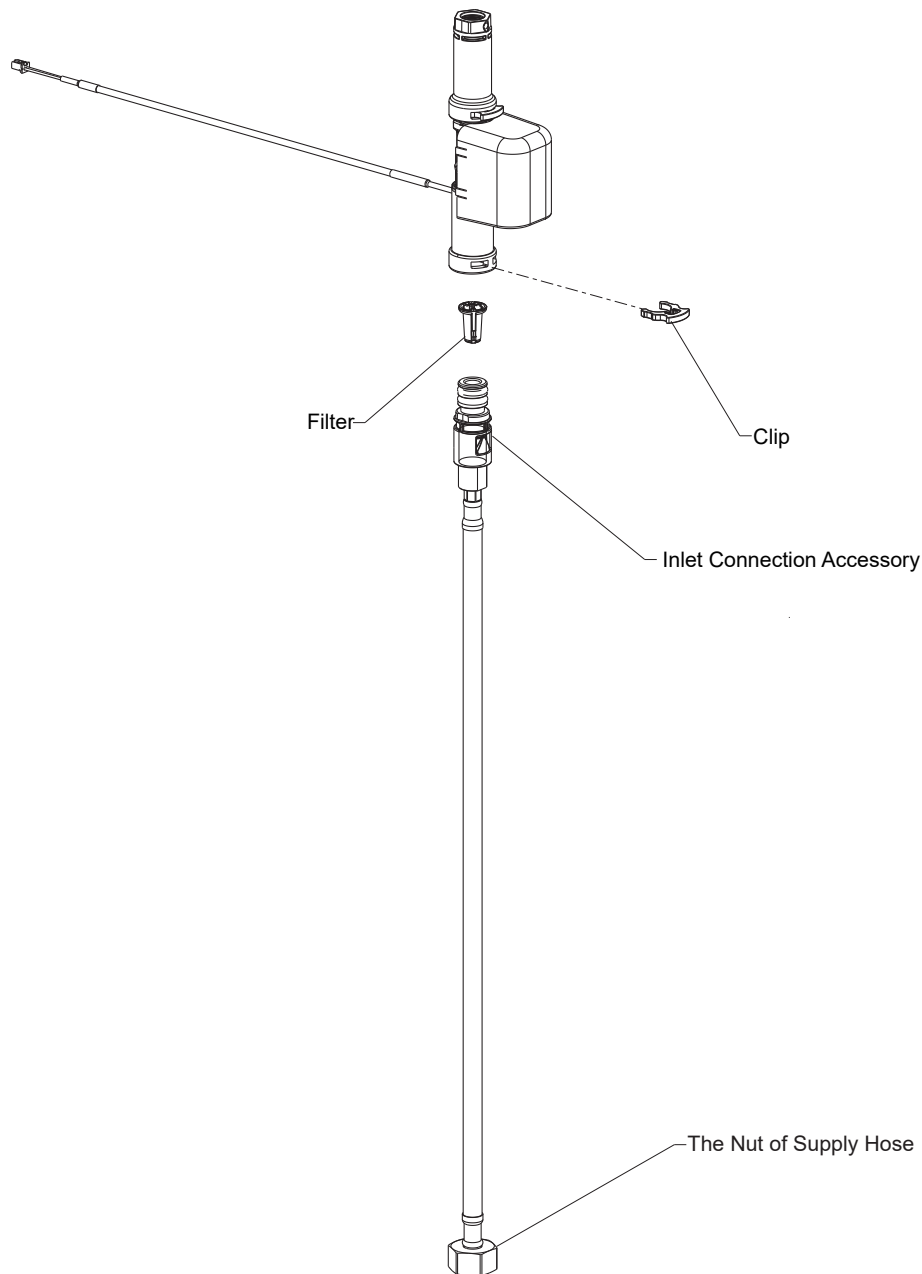


How to Operate the Faucet Manually

When the valve box fails to operate properly, remove the valve box and the faucet can be used manually.

1. Turn OFF the water, open the handle to the open position, and release the water pressure.
2. Remove the clip as shown.
3. Remove the valve box.
4. Connect the fittings together with one of the clips that were removed.
5. Turn ON the water, open the handle, and the faucet can be used manually.
6. Reconnect the valve box by following these steps in reverse.

CARE AND MAINTENANCE



How to Clear the Filter

1. Rotate the handle to the closed position.
2. Turn OFF the water.
3. Loosen the nut of the supply hose by hand and disconnect the supply hose.
4. Remove the clip.
5. Disassemble and clean the filter.
6. Place the filter into the valve box and reinstall the inlet connection accessory onto the valve box.
7. Insert the clip back into the valve box until you hear a clicking sound.

TROUBLESHOOTING

CAUTION: Risk of product damage. This product contains sensitive electronic components. Use care not to damage wires and connectors during troubleshooting.

Symptoms	Probable Causes	Recommended Actions
1. No water flow.	<p>A. The supply stops are closed.</p> <p>B. Handle is in the closed position.</p> <p>C. Valve box is not activated.</p> <p>D. Filters are clogged.</p>	<p>A. Confirm the supply stops are open.</p> <p>B. Lift the handle to the open position. Refer to the "Operation Instructions" section.</p> <p>C. Refer to below "Valve box is not activated".</p> <p>D. Refer to the "Care and Maintenance" section. Clear the filters of valve box and aerator.</p>
2. Low water flow.	<p>A. The supply stops are partially closed.</p> <p>B. Handle is partially closed.</p> <p>C. Filters are clogged.</p> <p>D. Valve box is failure.</p>	<p>A. Confirm the supply stops are fully open.</p> <p>B. Lift the handle to the full open position.</p> <p>C. Refer to the "Care and Maintenance" section. Clear the filters of electronic valve and aerator.</p> <p>D. Contact your Kohler Co. Authorized Service Representative.</p>
3. Water drip or trickle when faucet is not in use.	<p>A. Valve box is failure.</p>	<p>A. Contact your Kohler Co. Authorized Service Representative.</p>
4. Valve box is not activated.	<p>A. The wires connection is incorrect or not in place.</p> <p>B. Battery is low or exhausted.</p> <p>C. Valve box is failure.</p>	<p>A. Refer to the "Installation" section. Reconnect the wires and ensure it is in place.</p> <p>B. Refer to the "Operation instruction". Check if there is a low battery reminder or it does not lit at all. If yes, refer to the battery installation instructions to replace the battery.</p> <p>C. Contact your Kohler Co. Authorized Service Representative.</p>
5. Intermittent sensor operation.	<p>A. Debris on the sensor lens.</p>	<p>A. Use mild soap and water to gently remove debris from the sensor lens.</p>

Statistics of Contents of Toxic or Hazardous Substances or Elements

Part Name	Toxic or Hazardous Substance or Elements					
	Lead (Pb)	Mercury (Hg)	Cadmium (Cd)	Hexavalent Chromium (Cr(VI))	Polybrominated Biphenyls (PBB)	Polybrominated Diphenyl Ethers (PBDE)
Control Box Assy.	○	○	○	○	○	○
Valve Box Assy.	○	○	○	○	○	○
Sensor Assy.	○	○	○	○	○	○
Faucet Assy.	×	○	○	×	○	○

This form is prepared in accordance with the rules in SJ/T 11364.

○: Indicates that the substance in the material composition is below the high limits of the current requirements in GB/T 26572.

×: Indicates that at least one of the homogeneous substance in the material composition is above the high limits of the current requirements in GB/T 26572.

Note: the information provided is based on the supplier data and Kohler inspection results. The product is designed not to hurt the environment. Under current technology, all hazardous materials have been used in the smallest amounts possible. Kohler will strive to reduce the use of these hazardous materials used in this product.



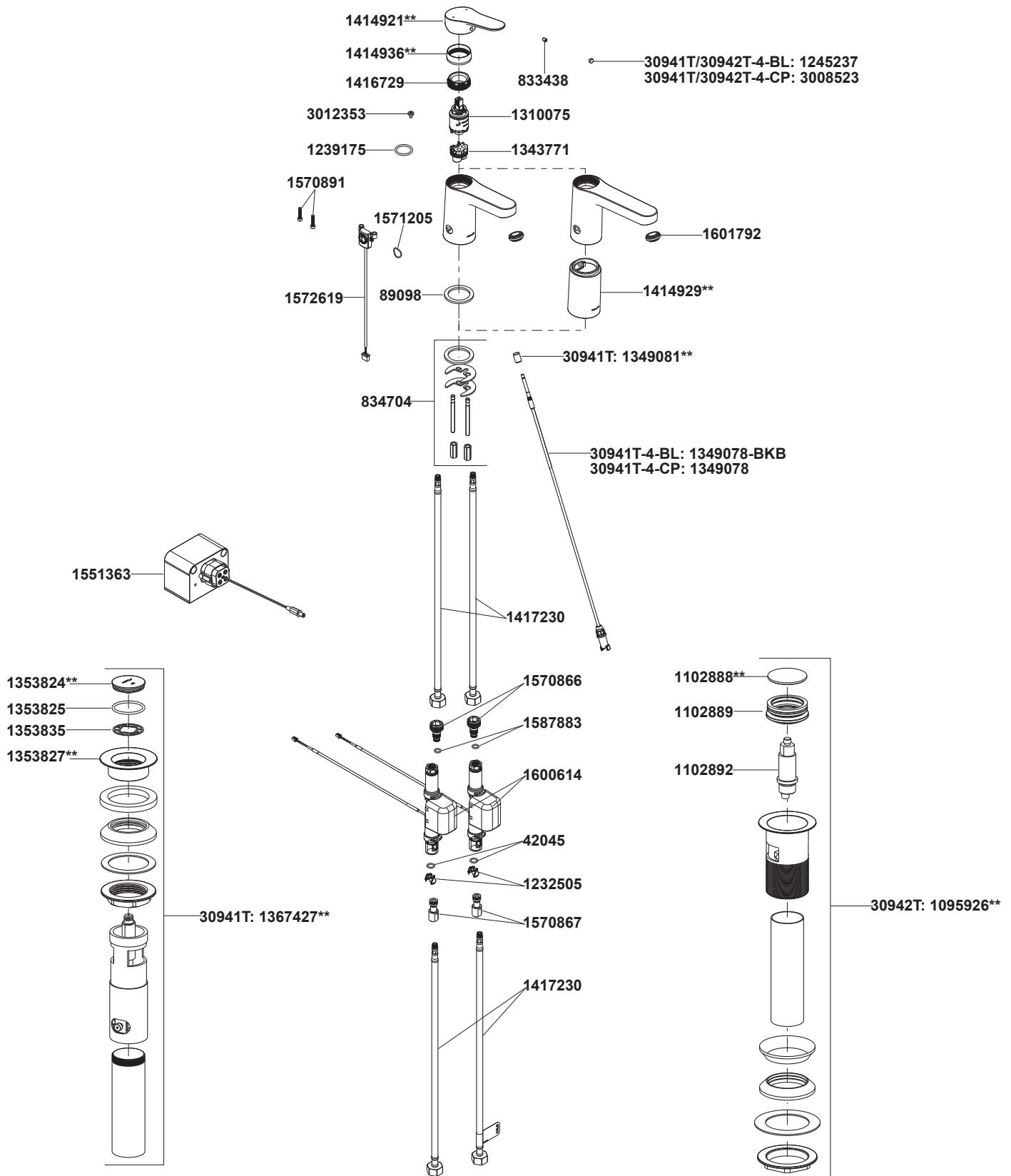
The product “service life for environment protection” is 10 years; Kohler Company will specify product service life based on product characteristics. The product “service life for environment protection” is only effective when the product is used as described in the product specification.

CLEANING INSTRUCTIONS

All Finishes: Clean the finish with mild soap and warm water. Wipe entire surface completely dry with clean soft cloth. Many cleaners may contain chemicals, such as ammonia, chlorine, toilet cleaner etc. which could adversely affect the finish and are not recommended for cleaning.

Do not use abrasive cleaners or solvents on Kohler faucets and fittings.

32941T-4 Single Handle Touchless Lavatory Faucet 32942T-4 Tall Single Handle Touchless Lavatory Faucet



**Color code must be specified when ordering.