

Record your model number: _____

CAUTION: Risk of personal injury or property damage. Product can break, chip, or cause injury if handled carelessly. Get help lifting the bathroom sink.

IMPORTANT! Dry fit the drain to the bathroom sink before installing the bathroom sink to ensure fit. Kohler Products works best with Kohler accessories. Please see the product Specification Sheet found on kohler.co.in for recommended accessories.

DO NOT use adhesives or adhesive sealants.

Your product may appear different from the one illustrated. The installation procedure is the same.

Follow all local plumbing and building codes.

1A. Drill with 14 mm Drill Bit

1B. Silicone Sealant

2A. 6-11/16" (170 mm)

2B. 31" - 34" (780 mm - 863 mm)

5A. With assistance, lift and position the bathroom sink onto the mounting bolts.

6A. Secure the bathroom sink with the provided washers and nuts. **Do not overtighten.**

8A. Apply silicone sealant. Immediately wipe away excess silicone sealant.

9A. Install the faucet and drain following the manufacturers instructions.

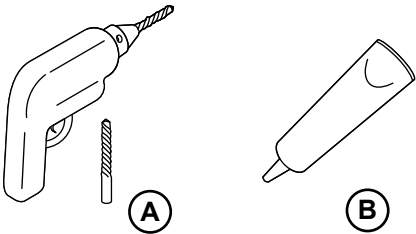
11A. Run water and check for leaks.

Need help? Contact our Customer Care Center.

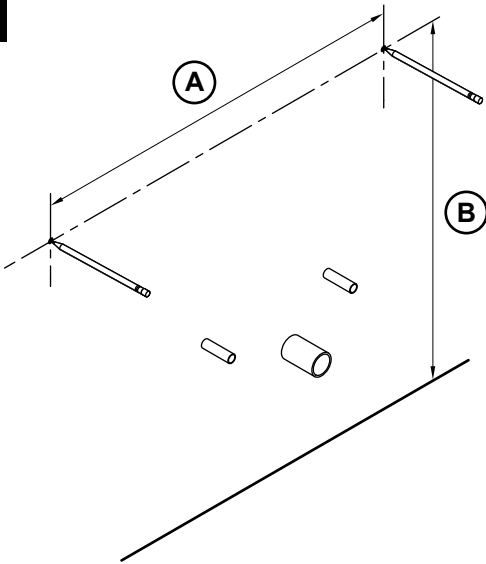
- Email: indiacustomercare@kohler.com
- Call: 1800-103-2244
- **Care and cleaning:** Please refer to the Care and Cleaning on the product detail page.

This product is covered under the **KOHLER® India Sanitaryware and Bathing Products Limited Warranty**, found at kohler.co.in/warranty. For a hardcopy of warranty terms, contact the Customer Care Center.

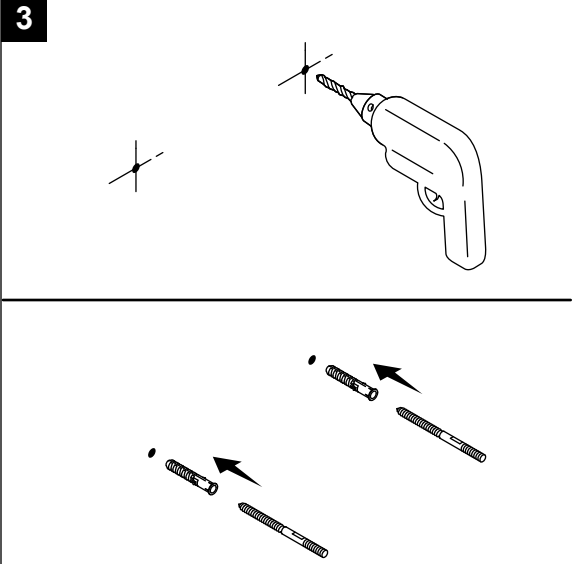
1



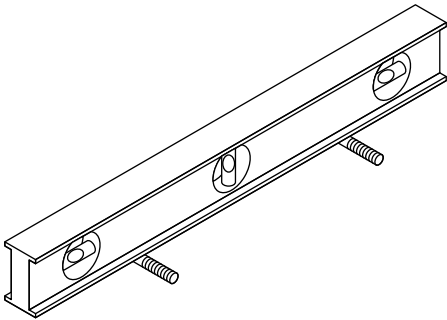
2



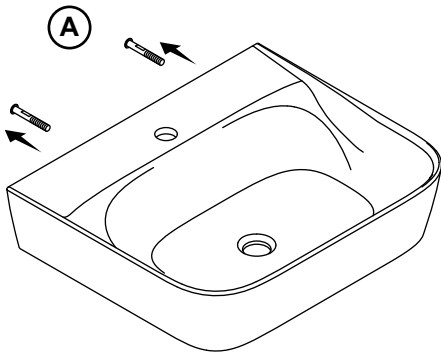
3



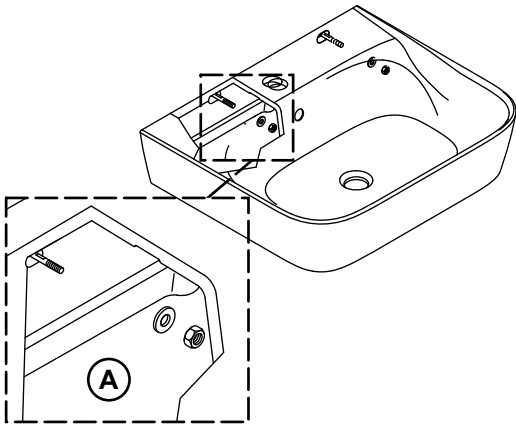
4



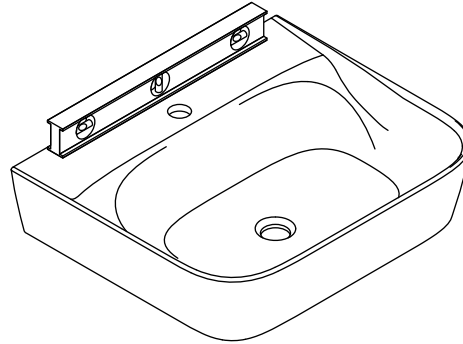
5



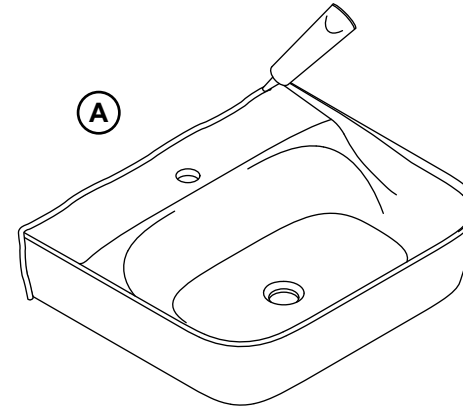
6



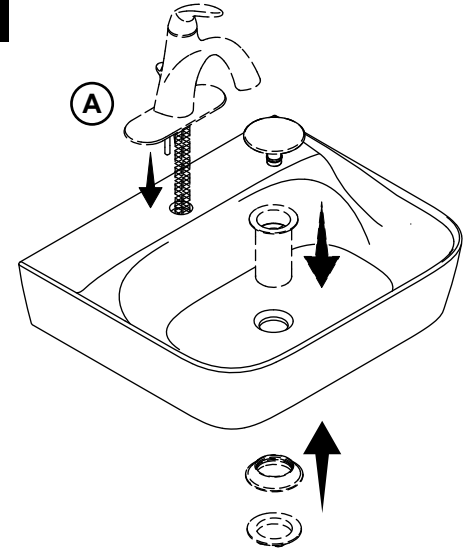
7



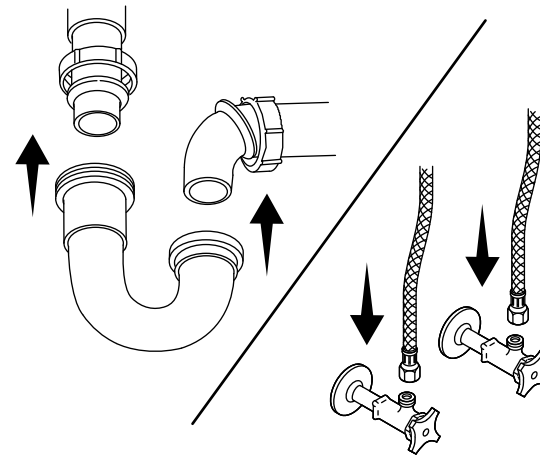
8



9



10



11

