

## Features

- Brass construction
- Optimized sprayface and large nozzles for improved water coverage
- Flexible, silicone nozzles assure long life and easy clean
- Patented self-levelling, non-drip technology
- Durable KOHLER finishes resist corrosion and tarnishing
- Katalyst air-induction technology for powerful and even coverage

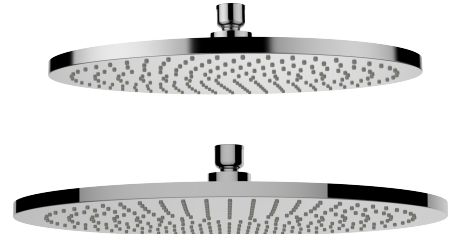
## Codes/Standards Applicable

- Specified model meets or exceeds the following:
- GB/T 23447-2009

## Installation Notes

Install this product according to the installation guide.

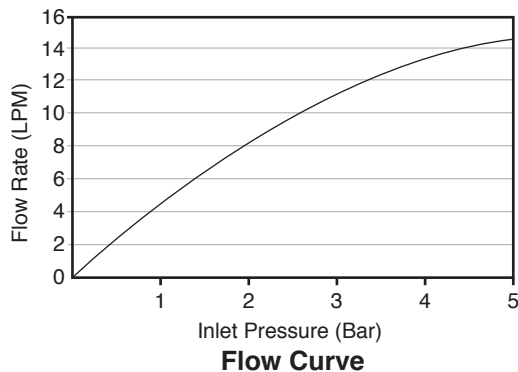
## CONTEMPORARY ROUND RAINHEAD WITH KATALYST® AIR-INDUCTION SPRAY K-15992T-CL ALSO K-15994T-CL



## Specified Model

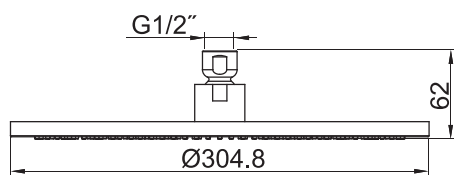
Model	Description	Color/Finished					
K-15992T-CL	Contemporary Round 12" Rainhead	<input type="checkbox"/> Polished Chrome (CP)	<input type="checkbox"/> French Gold (AF)	<input type="checkbox"/> Brushed Nickel (BN)	<input type="checkbox"/> Polished Nickel (SN)	<input type="checkbox"/> Brushed Gold (BGD)	<input type="checkbox"/> Polished Gold (PGD)
K-15994T-CL	Contemporary Round 14" Rainhead	<input type="checkbox"/> Polished Chrome (CP)	<input type="checkbox"/> French Gold (AF)	<input type="checkbox"/> Brushed Nickel (BN)	<input type="checkbox"/> Polished Nickel (SN)	<input type="checkbox"/> Brushed Gold (BGD)	<input type="checkbox"/> Polished Gold (PGD)

For a full range of color finishes in your market please contact your local Kohler representative.

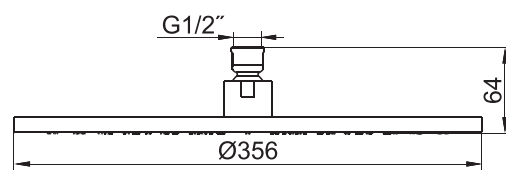


- Note: 1. Flow rates are approximate. (1 gallon = 3.785liters, 1 bar = 14.5psi)  
 2. Flow curves above show the flow rate with the flow regulator installed.  
 3. For optimum performance a min of 14lpm system flow capacity is recommended.

Dimensions are approximate.  
 Unit: mm



K-15992T-CL



K-15994T-CL

## Product Diagram