



记录您的型号：
Record your model number: _____

⚠ 小心：人身伤害风险。本产品不能作为扶手等支撑物使用, 请勿将产品安装在可能被误认为扶手等支撑物的位置。

请遵守当地管路安装及建筑条例。

在安装或使用本产品之前阅读所有说明。

请保存说明书。

所需的其他工具和材料：

1A. 6 mm 钻头

1B. 2.5 mm 六角扳手

安装步骤

2A. 推荐安装位置：H = 8”（203 mm） - 12”（305 mm），W = 6”（152 mm）

3A. 将卫生纸架靠着墙面（凸起处朝上），用水平仪确认位置水平垂直。

4A. 标记四个安装孔。

5A. 钻四个 6 mm 的安装孔。

6A. 塞入胀塞，将托盘框架和纸筒支架对齐，拧紧螺丝固定到墙上，并装上装饰盖。

7A. 从上方安装托盘，注意卡扣固定到位。

8A. 将毛巾架靠着墙面（凸起处朝上），用水平仪确认位置水平垂直。

9A. 钻四个 6 mm 的安装孔。

10A. 塞入胀塞，将毛巾架框架和毛巾架支架对齐，拧紧螺丝固定到墙上，并装上装饰盖。

11A. 从上方安装托盘，注意卡扣固定到位。

12A. 对于毛巾杆，将安装模板用透明胶带粘到墙面，使用水平仪确保位置水平垂直。

13A. 钻四个 6 mm 的安装孔。

14A. 塞入胀塞，拧紧螺丝固定上墙底座。

15A. 使用六角扳手从下方旋紧螺丝固定毛巾杆。

17A. 对于毛巾环或衣钩，钻两个 6 mm 的安装孔。

18A. 塞入胀塞，拧紧螺丝固定上墙底座，并使用六角扳手从下方旋紧螺丝固定产品。

需要帮助？ 请联系我们的客户服务中心。

• 中国大陆：+(86) 800-820-2628, +(86) 400-820-2628

• **保养和清洁：** kohler.com.cn/support/care-and-cleaning/

本产品**在科勒®卫浴产品的3年有效质保范围内**，详见所附的《合格证》。

⚠ CAUTION: Risk of personal injury. This product cannot be used as support such as a handrail. DO NOT install the product in a position where the product could be mistaken for support such as a handrail.

Follow all local plumbing and building codes.

READ ALL INSTRUCTIONS BEFORE INSTALLATION

SAVE THESE INSTRUCTIONS

Additional Required Tools and Materials:

1A. 6 mm Drill Bit

1B. 2.5 mm Hex Wrench

Installation Steps:

2A. Recommended Toilet Paper Holder location: H = 8" (203 mm) to 12" (305 mm), W = 6" (152 mm)

3A. Align the toilet paper holder bracket on the wall (raised part facing upwards). Verify that the product is level.

4A. Mark four installation holes.

5A. Drill four 6 mm holes for the wall anchors.

6A. Insert the wall anchors into the wall. Align the tray bracket and the toilet paper holder bracket with the holes. Secure the brackets using the provided screws. Attach the decoration cover.

7A. Set the tray onto the tray bracket. Verify that the locks are correctly aligned.

8A. Align the towel shelf on the wall (raised part facing upwards) to verify that the product is level. Mark the holes.

9A. Drill four 6 mm installation holes.

10A. Insert the wall anchors into the wall. Align the towel shelf frame and the supporting bracket with the holes. Secure the towel shelf using the provided screws. Attach the decoration cover.

11A. Set the tray onto the tray bracket. Verify that the locks are correctly aligned.

12A. For Towel Bar, align the installation template on the wall and verify that the template is level using a spirit level.

13A. Drill four 6 mm holes according to the template marks.

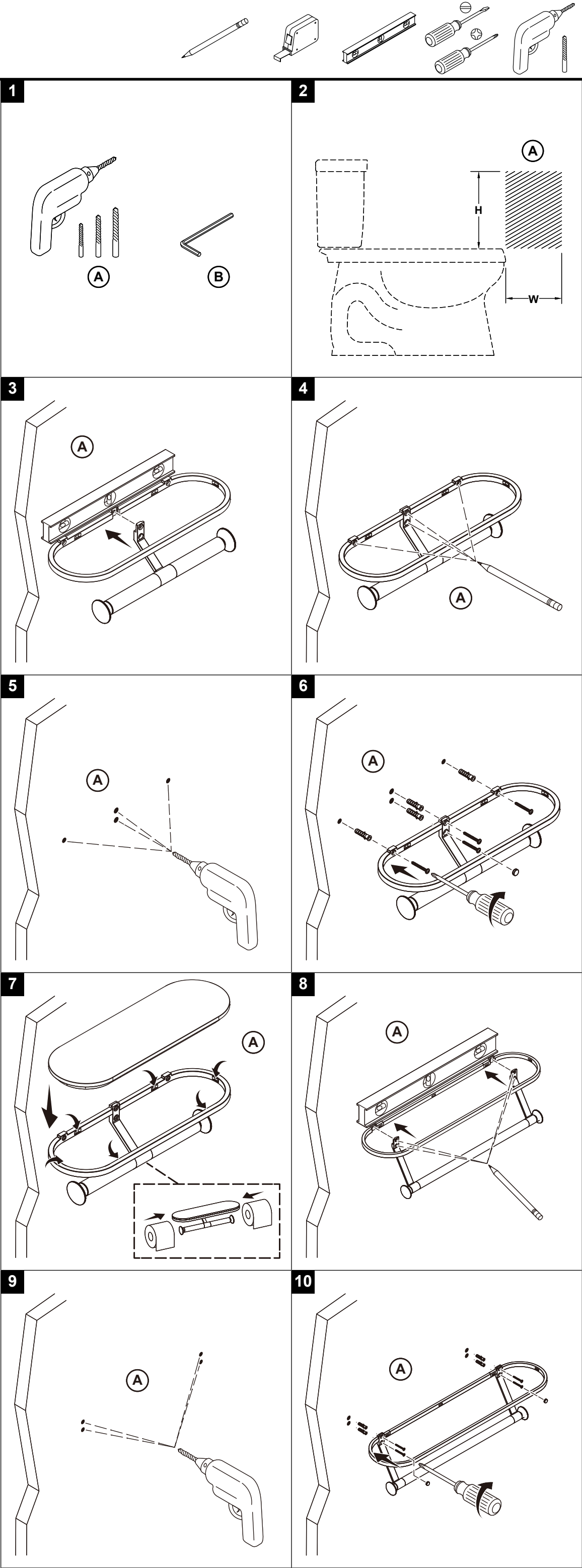
14A. Insert the provided wall anchors into the wall and secure the mounting brackets using the provided screws.

15A. Tighten the screws under the towel bar for both sides using a 2.5 mm hex-wrench.

17A. For Hook or Towel Ring, drill two 6 mm holes according to the marks.

18A. Insert the wall anchors into the wall and secure the mounting bracket using the provided screws. Tighten the screw under the product using a 2.5 mm hex-wrench.

Need help? Please contact our Customer Service Center.



• Chinese mainland: +(86) 800-820-2628, +(86) 400-820-2628

• Care and cleaning: kohler.com.cn/support/care-and-cleaning/

This product is covered under the **Three-Year Limited Warranty for KOHLER® Plumbing Products**, found in the packed Compliance Certification.

