

科 THE BOLD LOOK
勒 OF KOHLER
全球厨卫经典

K-2186T-1/-4/-8
芬乐尔 FLEUR

釉面陶瓷嵌入式台上脸盆
VITREOUS CHINA SEMI-RECESSED LAVATORY
切割图/安装说明书
CUT-OUT TEMPLATE / INSTALLATION INSTRUCTION

沿此线切割
CUT ALONG THIS LINE

脸盆边缘
RIM OF LAVATORY

重要

- 量度由地面到地内排水管的位置，确保有足够空间，使安装时无障碍。请参阅尺寸图。
- 若为更换脸盆工程，必须先确保现有的切割位等于或小于新脸盆之尺寸。

安装之前

- 在你拆除旧装备之前，先开启新脸盆的包装，并小心检验新的脸盆是否有任何损坏的迹象，釉面陶瓷可能会破碎，你也不想安装后才发现有损坏的情况。检查后将脸盆放回包装盒内，到安装时才取用，以防止损坏。

- 必须确保已备有原装切割图助你切割凿洗台。因为要安装科勒移动式脸盆，没有切割图是不行的。

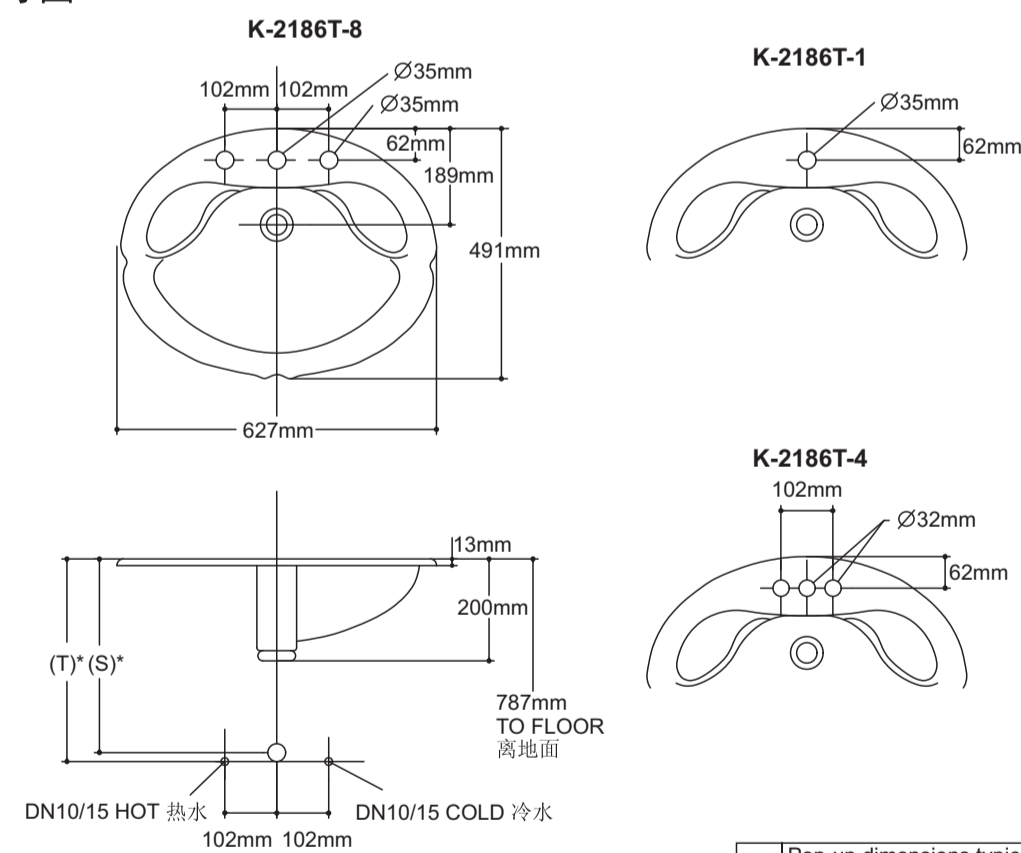
- 请遵守当地所有给排水规定。

- 科勒洗脸盆是根据美国标准制造的，与美国洗脸盆配件相配。其它洗脸盆配件可能与之不匹配。

所需工具及物料
(不随货供应)

- 涂油灰刀
- 活动扳钳
- 手扳电钻或匙孔线锯
- 喉管扳钳
- 切管刀
- 螺丝刀
- 尺
- 铅笔
- 钻
- 13mm钻头
- 护眼镜
- 剪刀
- 密封胶
- 渠务油灰
- 新龙头(如有需要)
- 止水阀(如有需要)

尺寸图



* Nominal dimensions only. May change due to p-trap, faucet or angle-supplies used.
* 尺寸仅供参考，可能会因P弯、龙头、角阀及供水管而改变。

(T)	Pop-up dimensions typically 343mm. Drain typically 299mm.
(S)	Single hole (254mm), 4" centers (254mm).
(S)	8" centers (356mm); based on use of 305mm riser which may require cutting.

(T)	凸出排水管一般为343mm，排水管则为299mm。
(S)	单孔(254mm)，4寸中心距(254mm)，8寸中心距(356mm)，根据305mm管口而定，可能需切短。

IMPORTANT

- Measure location of drain line in the wall from floor to determine if adequate clearance can be provided for barrier free installation. See Rough-in.
- For replacement installation, make sure existing cutout is the same or smaller size than the lavatory.

BEFORE YOU BEGIN

- Begin you remove your old fixture, unpack the new lavatory and carefully inspect it for any damage that may have occurred. Vitreous china may chip and you do not want to discover damage after the unit has been installed. Until you are ready to begin installation, place the lavatory back in the original packing carton to prevent damage.
- Also make sure you have complete original template to aid you in cutting out your counter top. Kohler self-rimming lavatories cannot be installed without a template.
- OBSERVE ALL LOCAL PLUMBING CODES.
- Kohler lavatory is made according to American National Standard that it can match the American lavatory fittings. Any other lavatory fittings may not fit for kohler lavatory.

TOOLS AND MATERIALS
(Not Supplied)

- Putty knife
- Adjustable wrench
- Saber or keyhole saw
- Pipe wrench
- Tubing cutter
- Screwdriver
- Hacksaw
- Ruler
- Pencil
- Drill
- 13mm drill bit
- Safety glasses
- Scissors
- Sealant
- Plumber s putty
- New faucet (optional)
- Shut-off valves (optional)

ROUGH-IN

- 移走旧脸盆，关掉脸盆下的两个止水阀即可关掉水源。若无止水阀，可关闭水表。打开龙头，让留在供水管的水流出，然后拆下供水管，使之与水龙头分离。再拆开排水装置，并拿开存水管。

- 使用剪刀将切割图沿线切出。
- 用铅笔沿模块在台面划线。

注：切割图上有中心线助开口定位正确。

- 若切割新的凿洗台，先用一个13mm的钻头钻一个导孔，然后用电钻或匙孔线锯小心沿着按切割图勾划出来的铅笔线切开台面。
- 将脸盆放入台面开口内放正，固定后用铅笔沿脸盆外缘在凿洗台上划线。此线乃用来确定使用密封胶的范围，然后将脸盆移开。

- 按照制造商的指引，装上水龙头和排水管道。

- 在台面切割口和沿脸盆外沿的导线之间，涂上一行密封胶，并用涂油灰刀将其抹匀。注意：使用密封胶时动作要快，因其会在数分钟之内凝固。

- 然后按划线的位置小心地将脸盆置于台面切口适当位置，按下脸盆，固定位置。

- 立刻用湿布擦去多余的密封胶。如有缝隙即用胶填满。

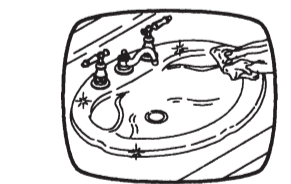
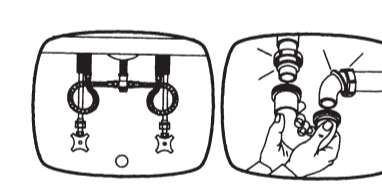
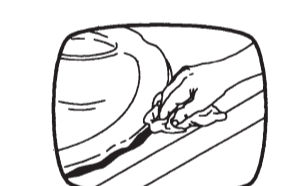
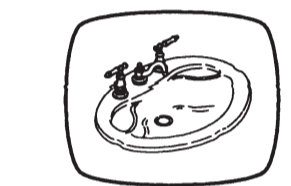
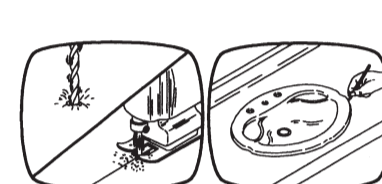
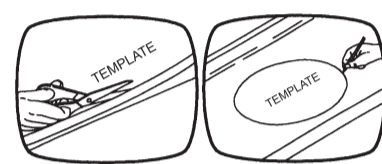
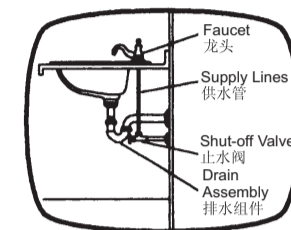
- 待密封胶风干三十分钟，然后联接供水和排水管道。

- 供水网上装上供水管及配件，联接时切勿移动脸盆。

- 联接排水管道和存水管于脸盆及墙上出水口时，将下水尾管插入排水口，让排水管与尾管成一直线，套上存水管螺母和密封胶圈，再装上存水管。下水尾管须插入存水管弯管25至50mm，如太长应切掉。

- 打开供水管，检查所有供水及排水连接处有无渗漏。

- 清理：安装后进行清理时，切勿用腐蚀性清洁剂，以免刮花或导致盆面黯淡。可用暖水及液态非腐蚀性清洁剂清洗表面。如有顽迹、油漆或污点，可用松油或油漆稀释剂清洗。



用户须知
(护理和清洁)

为保持脸盆光洁如新，须确保每次使用后彻底冲洗干净。切勿使用腐蚀性的清洁剂，以免刮花及破坏脸盆的表面。要清除顽固污垢、油漆或柏油，可使用松油或油漆稀释剂。

陶瓷及浴缸产品及配件担保
—— 一年有限担保

科勒公司担保其陶瓷及浴缸产品及配件在制造工艺上无瑕疵。

本产品自购买之日起即获得本公司一年的质量保证。在质保期内，凭购货发票，科勒公司将免费承担由制造质量问题引起的任何问题。经核查后，科勒中国有限公司有权决定是修理、更换，还是作适当的调整。

这里所指的担保，包括产品，都已明确地限制在该担保期之内。科勒中国有限公司对其后出现的损坏不负有任何责任。担保也不包括外观损伤、使用不当以及未按说明书安装造成的损失。

为获得快速的担保服务，请联系您的销售商；您也可写信给科勒中国有限公司(请出示销售发票原件作为购货凭证)：

科勒(中国)投资有限公司
中央客户服务中心
上海市卢湾区淮海中路138号
上海广场19楼
邮编：200021

这是我们全部的书面担保。

IMPORTANT
CONSUMER
INFORMATION (CARE
AND CLEANING)

To keep your lavatory looking new, make sure you rinse it out thoroughly after each use. **DO NOT USE ABRASIVES** on this product, as they will scratch and ruin the surface. Stubborn stains, paint, or tar can be removed with turpentine or paint thinner.

Plumbing Fixtures and Fittings Limited One-year Warranty

Kohler plumbing fixtures and fittings are warranted to be free of manufacturing defects.

This product is warranted for one year from date of purchase. Kohler China will be responsible for any problems caused by manufacturing defects provided with the invoice. Kohler China will, at its election, repair, replace or make appropriate adjustment where Kohler China inspection discloses any such defects occurring in normal usage within one year after purchase.

Implied warranties including that of merchantability and fitness for a particular purpose are expressly limited in duration to the duration of this warranty. Kohler China disclaims any liability for special, incidental or consequential damages. Damages to the product caused by misuse, abuse and installation that is not in accordance with the owner's manual are not covered by this warranty.

To obtain quick warranty service, please contact your dealer, or write to Kohler China. (Original sales receipt must be provided as the proof of purchase.)

Kohler China Investment Company Ltd.
Central Customer Service Center
19/F, Shanghai Square, 138 Huai Hai Road, Luwan District, Shanghai, PRC
Zip Code: 200021

This is our exclusive written warranty.

1084577-T01-A

© 版权为科勒中国有限公司所有, 2007
© Copyright Kohler China Ltd., 2007

491mm

627mm