

INSTALLATION INSTRUCTIONS

26480T-4 Recessed Bath Shower Trim-Classic 26481T-4 Recessed Shower Trim-Classic

BEFORE YOU BEGIN

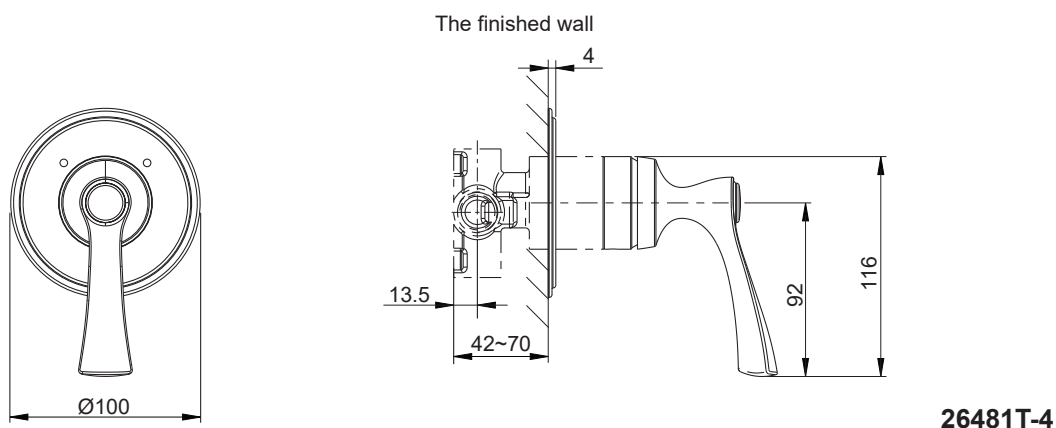
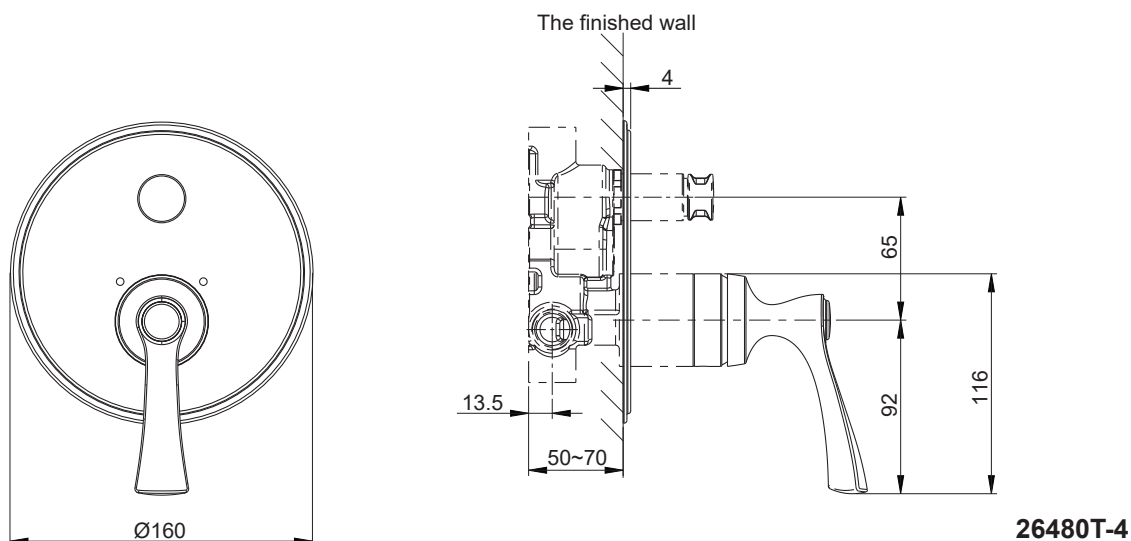
All information is based on the latest product information available at the time of publication. Kohler Co. reserves the right to make changes in product characteristics, packaging, or availability at any time without notice.

Please leave these instructions for the consumer. They contain important information.

NOTES:

1. Flush the water supply pipes thoroughly to remove debris.
2. Do not remove the rubber protector from the valve body until instructed to.
3. Install valve 882T-B according to the rough-in dimensions of 26480T-4, install valve 880T-B according to the rough-in dimensions of 26481T-4.

ROUGH-IN DIMENSIONS



INSTALLATION

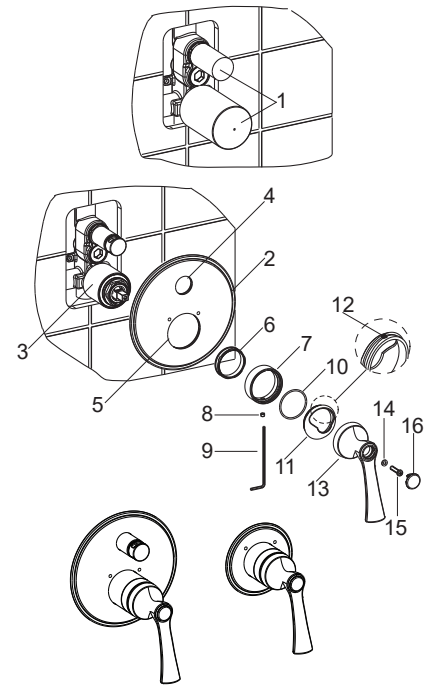
NOTE: Install valve 882T-B according to the rough-in dimensions of 26480T-4, Install valve 880T-B according to the rough-in dimensions of 26481T-4.

Remove the rubber protectors(1) after completed the finished wall.

Apply a ring of plumbers putty around the back surface of the faceplate(2). Slide the faceplate onto the valve(3). **NOTE:** Don't squeeze out the rings(4,5). Push it against the wall. Wipe away excess plumbers putty.

Tighten the connector(6) on the valve, install the escutcheon(7) on the connector with the hole of the escutcheon vertically downward. Secure the escutcheon by screw(8) with a hex wrench(9). Install the bonnet(11) with the O-ring(10) on the valve and make sure the bulge(12) align with the groove of the escutcheon. Install the handle(13) on the valve stem. Tighten the screw(15) with the gasket(14). Press plug button(16).

The illustration shown is the correct position of the handle in the closed position.

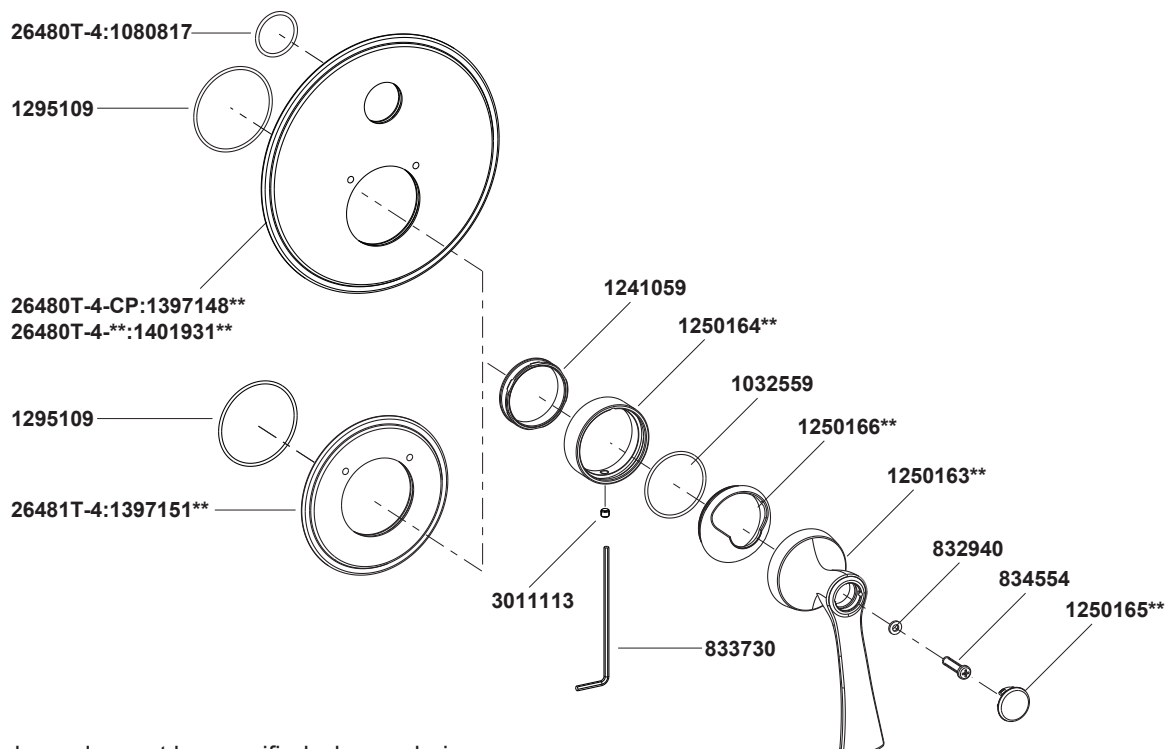


CLEANING INSTRUCTIONS

All Finishes: Clean the finish with mild soap and warm water. Wipe entire surface completely dry with clean soft cloth. Many cleaners may contain chemicals, such as ammonia, chlorine, toilet cleaner etc. which could adversely affect the finish and are not recommended for cleaning.

Do not use abrasive cleaners or solvents on Kohler faucets and fittings.

SERVICE PARTS



**Color code must be specified when ordering.