

Note: Make sure enough faucet installation clearance.
注意: 预留足够的龙头安装空间。

KOHLER

K-2768T-1 皓玥 KARESS

釉面陶瓷台下式脸盆 VITREOUS CHINA UNDERCOUNTER LAVATORY 切割图/安装说明书 CUT-OUT TEMPLATE / INSTALLATION INSTRUCTIONS

沿此线切割
CUT ALONG THIS LINE

安装之前

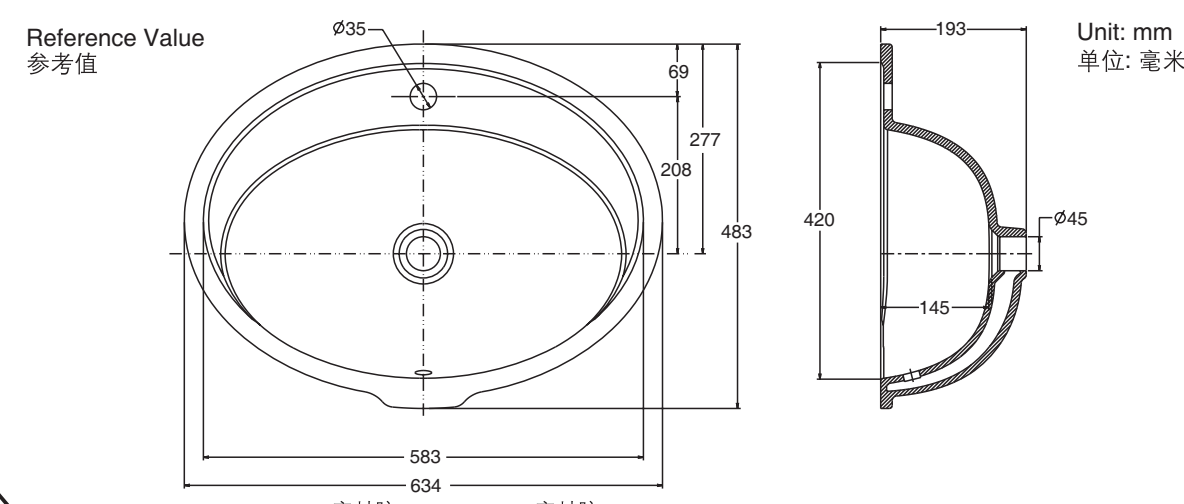
- 有关安装属专业性质, 故盥洗台下脸盆必须经由受过训练及有经验的技师进行安装。
- 切勿在本品上使用环氧树脂胶或水泥等硬化后体积变大的密封材料。
- 检查出水及供水管道, 如有需要请更换。
- 安装之前先开启新脸盆的包装, 检查有无损毁后放回纸箱中以免损坏, 到准备安装时才取出。
- 遵守当地所有给排水及建筑规定。
- 科勒瓷脸盆是根据美国标准制造的, 与美式洗脸盆配件相配, 其它洗脸盆配件可能与之不相配。

所需工具及物料 (不随货供应)

- 密封胶
 - 铅笔
 - 卷尺
 - 尖刀或剪刀
 - 旋孔线锯或手提电锯
 - 钻(直径1/2英寸或更大的钻头)
 - 防护眼镜
 - 锤子
 - 抹布或抹手纸
- 注意: 若盥洗台的物料并非木或木质复合材料, 则您可能需要在安装脸盆时使用其他更专门的工具。

尺寸图

Reference Value
参考值



	Length 长	Width 宽	Height 高	Depth 盆深
Outer 外径	634	483	193	
Inner 内径	583	420	145	

Note: waterproof unprotected overhang area on the underside of wood countertop.
注: 木质盥洗台面板下突出部分须作防水处理。

科勒公司保留随时变更图中所示尺寸的权利, 无需另行通知。
Kohler reserves the right to change marked dimensions without prior notice.

BEFORE YOU BEGIN

- Due to the nature of the installation, undercounter lavatories should be installed by trained and experienced installers.
- Do not use epoxy resin adhesive or sealing materials that will expand after concreting, such as cement.
- Inspect the waste and supply tubing; replace if necessary.
- Prior to installation, unpack the new lavatory and inspect it for damage. Return the lavatory to its protective carton until you are ready to install it.
- Observe all local plumbing and building codes.
- Kohler lavatory is made according to American National Standard that it can match the American lavatory fittings. Any other lavatory fittings may not fit for Kohler lavatory.

TOOLS AND MATERIALS (Not Supplied)

- Sealant
 - Pencil
 - Tape measure
 - Sharp knife or scissors
 - Keyhole or saber saw
 - Drill (1/2" dia. drill bit or larger)
 - Safety glasses
 - Hammer
 - Rags or paper toweling
- NOTE: You may require different, more specialized tools to install this lavatory to countertop materials other than wood or wood composites.

ROUGHING-IN

准备安装

- 将切割图沿切割线切出。
- 将切割图放在盥洗台上, 确保脸盆、水龙头和防溅挡板之间有足够距离。
- 用铅笔沿切割图在盥洗台面划线。
- 再次检查脸盆、水龙头、防溅挡板及储物柜的空间及距离, 如有需要可调整切割图的位置。
- 用一个13mm的钻头, 在切割口内侧钻一个导孔。
- 沿着自切割图勾划出来的铅笔线内侧切台面。
- 暂将脸盆放入台面开口, 校正位置。

木制盥洗台

- 按照模板所示的位置, 在台面标出及预先钻妥木螺钉的孔位。
- 其他外露的木表面需保持防水。

大理石盥洗台

- 将大理石盥洗台倒过来放在泡沫垫上以保护其表面, 按照模板所示的位置钻妥各个3/8英寸(10毫米)直径及5/8英寸(16毫米)深的孔位。
- 利用安装工具及锤子来固定预埋螺母。

安装新脸盆

- 如果有可能的话, 在安装脸盆之前组装脸盆上的水龙头和排水管, 请控制制造商的说明书进行操作。
- 清洁台面下部以及脸盆边缘。

- 安装夹子, 切勿上紧。

- 在与盥洗台接触的脸盆边缘均匀涂上硅胶类密封胶材料。

注意:

- 只能使用柔软的防水密封胶。
- 切勿使用环氧树脂胶或水泥等硬化后体积变大的密封材料, 科勒对所有因此而引起的陶瓷破裂恕不负责。

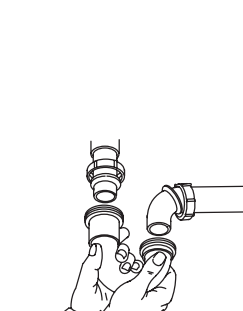
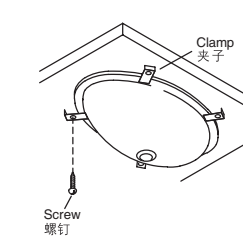
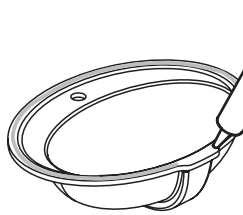
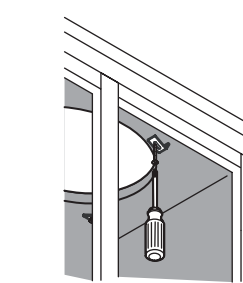
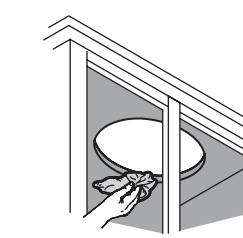
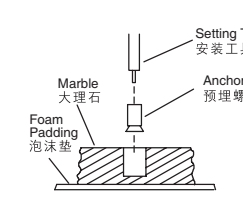
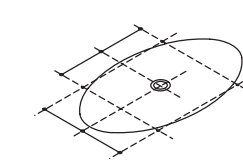
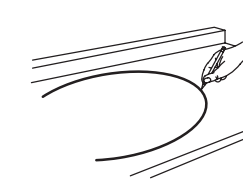
- 把脸盆小心地放到盥洗台开口下, 调整位置并上紧夹具, 切勿上得太紧。

注意:

- 随附的螺钉只适用于最少1英寸厚(25毫米)的盥洗台, 而较薄的盥洗台则要用其他合适的预埋螺母及紧固件。
- 在木、木质合成物及大理石的盥洗台(最少1英寸厚)上安装脸盆时, 可使用随附的夹具及螺钉, 其他物料制造的盥洗台, 则请参考盥洗台制造商的说明书上的建议, 使用适当的扣件。

- 立即擦去多余的密封胶。
- 根据制造商说明书连接水龙头供水管及排水管装置。

- 开启水龙头阀门, 检查是否有渗漏。
- 使用非腐蚀性的清洁剂进行清洁。



PREPARATIONS FOR INSTALLATION

- Cut the template on the cutout line.
- Position the template on the countertop to ensure clearance between the lavatory, faucet, and backsplash.
- Verify cabinet clearance beneath the countertop.
- Trace the template on the countertop with a pencil.
- Re-check the clearance between the lavatory, faucet, backsplash, and cabinet. Adjust the template accordingly.
- Drill a 13mm hole on the inside of the cutout opening.
- Cut the opening in the countertop along the inside edge of the pencil line.
- Temporarily position the lavatory in the opening, and adjust to fit.

FOR WOOD COUNTERTOPS

- Mark and pre-drill the wood screw holes at the locations shown on the template.
- Waterproof any exposed areas of wood.

FOR MARBLE COUNTERTOPS

- Position the countertop upside down on foam padding to protect the surface. Mark and drill 3/8" (10mm) holes 5/8" deep at the locations shown on the template.
- Use a setting tool and hammer to secure the anchors.

INSTALL NEW LAVATORY

- If possible, assemble the faucet and drain to the lavatory before installing the lavatory. Please follow the manufacturer's instructions.
- Clean the underside of the countertop and the rim of the lavatory.

- Loosely install the clips.

- Evenly apply silicone sealant to the rim of the lavatory where it meets the countertop.

NOTE:

- Please use soft and water-proof sealant.
- Do not use epoxy resin adhesive or sealing materials that will expand after concreting, such as cement. Otherwise, Kohler will not be responsible for any product damage caused by such material.

- Carefully put the lavatory into the opening of the countertop. Adjust the position and tighten the clips. Do not overtighten.

NOTE:

- The screws provided should be used on countertops with a minimum 1" (25mm) thickness. For thinner countertops, use appropriate anchors and fasteners.
- For wood, wood composite, and marble countertops (at least 1" thick), install the lavatory to the countertop with the clips and screws provided. For other countertop materials, refer to the countertop manufacturer's instructions for recommended fasteners.

- Immediately wipe away excessive sealant.
- Connect the faucet supply pipe and drainage pipe according to manufacturer's instructions.
- Turn on the faucet valve to check for leakage.
- Clean up with non-corrosive detergent.

用户须知 (护理和清洁)

- 为保持脸盆光洁如新, 须确保每次使用后彻底冲洗干净, 切勿使用腐蚀性的清洁剂, 以免破坏脸盆的表面。要清除顽固污垢、油漆或柏油, 可使用松油或油漆稀释剂。
- 不要在0°C以下的水环境中使用。
- 请勿使用钢丝球等硬质材料擦产品表面, 特别是产品商标处。

IMPORTANT CONSUMER INFORMATION (CARE AND CLEANING)

- To keep your lavatory looking new, make sure you rinse it out thoroughly after each use. **DO NOT USE ABRASIVES** on this product, as they will ruin the surface. Stubborn stains, paint, or tar can be removed with turpentine or paint thinner.
- Do not use the product in the water below 0°C.
- Please do not use hard materials (like scouring pad) to clean product surface, especially the product logo.

注意: 采用此切割模板切割的台面内沿到面盆内边缘的距离为6mm左右, 客户可根据需要按比例缩放用以切割台面。

NOTE: Using this template, the overhang is about 6mm. Customers can zoom the template by scale to meet their requirement.

维修零件 SERVICE PARTS



脸盆边缘
RIM OF LAVATORY

科勒对所有未按照科勒要求安装、护理和清洁而造成的损失恕不负责。

Kohler will not be responsible for any product damage or property loss caused by not following Kohler's instructions for installation, care and cleaning.

1187589-T01-B

© 版权为科勒中国有限公司所有, 2012
© Copyright Kohler China Ltd., 2012