



FLEXISPACE 2.0 玲纳2.0

INSTALLATION INSTRUCTIONS

安装说明书

SYNTHETIC TOP

一体化台盆

K-23794T-1/K-30410T-1/K-23795T-1

K-23796T-1/K-23797T-1/K-30411T-1

K-23798T-1/K-23798T-2H/K-23049T-2H

BEFORE YOU BEGIN

安装之前

- Please read these instructions carefully to familiarize yourself with the required tools, materials, and installation sequences. Follow the sections that pertain to your particular installation. This will help you avoid costly mistakes. In addition to proper installation, read all operating and safety instructions.
  - All information in these instructions is based upon the latest product information available at the time of publication. Kohler China. reserves the right to make changes in product characteristics, packaging, or availability at any time without notice.
  - These instructions contain important care, cleaning, and warranty information-**please leave instructions for the consumer.**
  - Turn off the water supply.
  - The plumbing installation must comply with Water Supply Regulations/Bye-laws, Building Regulations or any particular regulations and practices, specified by the local water company or water undertakers. The installation should be carried out by a plumber.
  - Before installation carefully inspect the new fixture for any signs of damage.
  - This product complies with GB/T 24977-2024.
- 请仔细阅读本指引，以便熟悉所需工具、物料及安装程序。请遵照适用的章节来安装本产品，以免安装失当导致不必要的损失。除了有关正确的安装方法之外，还务请详阅所有操作及安全指引。
  - 本指引所载之一切资料，均以印刷时所有之最新产品情况为基础，科勒中国保留权利随时更改产品特性、包装或供应情况，恕不另行通知。
  - 本指引也包含了有关保养、清洁及担保等重要资料-请交予用户保存。
  - 关闭供水。
  - 管道安装必须遵循当地所有给排水、建筑或者其他的特别规定。管道安装人员必须具备相应资格。
  - 安装之前，仔细检查新产品是否有损伤。
  - 本产品符合GB/T 24977-2024。

ORDERING INFORMATION		订购信息	
FLEXISPACE 2.0 600 Synthetic Top .....	K-23794T-1	玲纳2.0一体化台盆600mm .....	K-23794T-1
FLEXISPACE 2.0 700 Synthetic Top .....	K-30410T-1	玲纳2.0一体化台盆700mm .....	K-30410T-1
FLEXISPACE 2.0 800 Synthetic Top .....	K-23795T-1	玲纳2.0一体化台盆800mm .....	K-23795T-1
FLEXISPACE 2.0 900 Synthetic Top .....	K-23796T-1	玲纳2.0一体化台盆900mm .....	K-23796T-1
FLEXISPACE 2.0 1000 Synthetic Top.....	K-23797T-1	玲纳2.0一体化台盆1000mm .....	K-23797T-1
FLEXISPACE 2.0 1100 Synthetic Top.....	K-30411T-1	玲纳2.0一体化台盆1100mm .....	K-30411T-1
FLEXISPACE 2.0 1200 Synthetic Top.....	K-23798T-1	玲纳2.0一体化台盆1200mm .....	K-23798T-1
FLEXISPACE 2.0 1200 Synthetic Top-2 Hole.....	K-23798T-2H	玲纳2.0一体化台盆1200mm双龙头档 .....	K-23798T-2H
FLEXISPACE 2.0 1200 Synthetic Top-2 Lav .....	K-23049T-2H	玲纳2.0一体化台盆1200mm双盆 .....	K-23049T-2H

- SAFETY WARNINGS

Kohler products are precision-engineered and should give continued superior and safe performance, provided:

1. They are installed, commissioned, operated and maintained in accordance with the recommendations given in this Manual.

2. Periodic attention is given, as necessary, to maintain the product in good functional order. Recommended guidelines are given in the **MAINTENANCE** section.

Carefully inspect the new fixture for any signs of damage.
- 安全警告

科勒产品经过精确制造，性能卓越，经久耐用。为保证产品品质，您必须：

1. 按照此手册中推荐的方法进行安装、起动、操作及维护。

2. 如有需要，定期检查，令产品保持良好性能状态。日常维护章节中列有推荐方法。

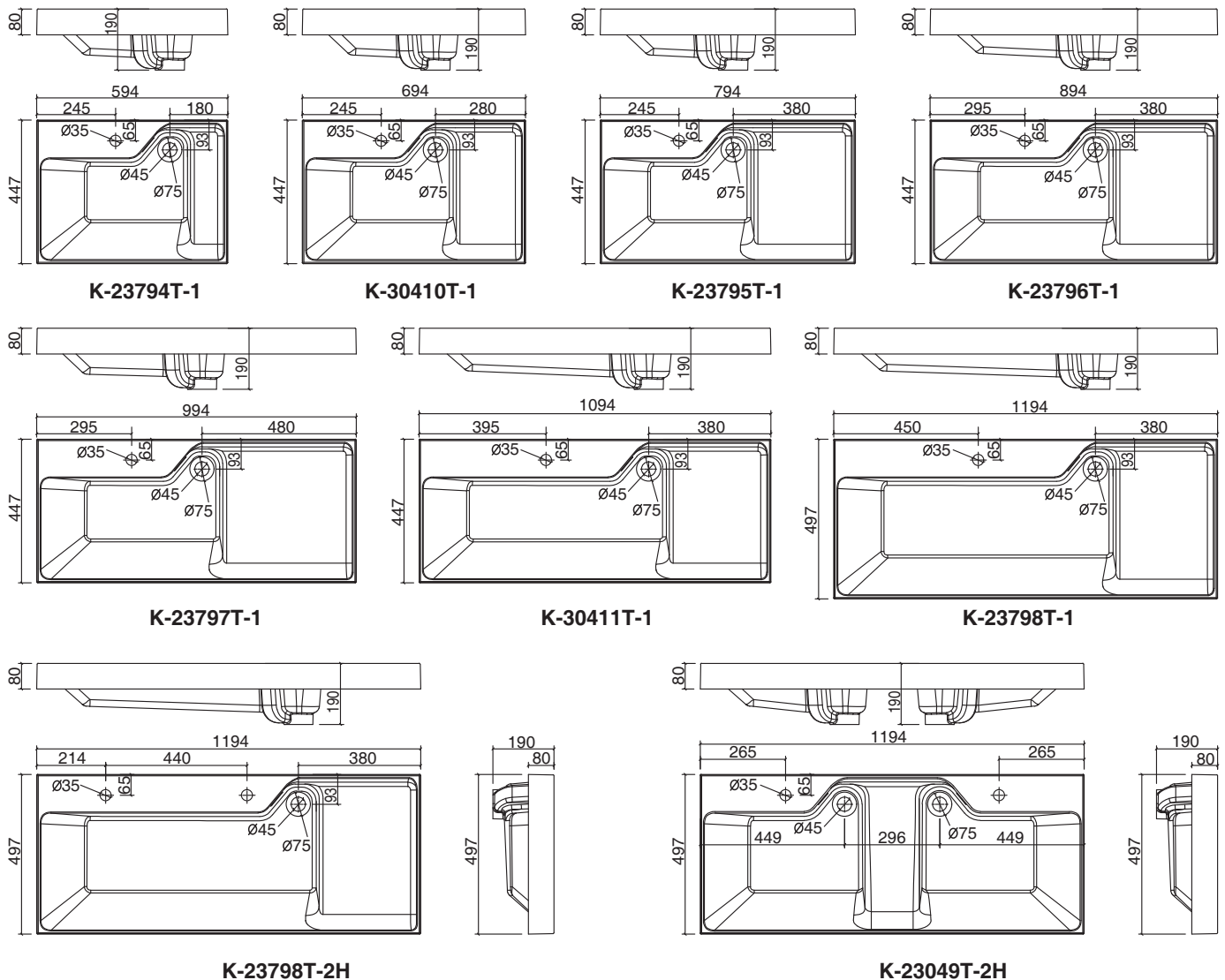
仔细检查新产品是否有损伤。

## ROUGHING-IN

## 尺寸图

Reference Value  
参考值

UNIT : mm  
单位: 毫米



Kohler reserves the right to change marked dimensions without prior notice.  
科勒公司保留随时变更图中标示尺寸的权利，无需另行通知。

## INSTALLATION

## 安装

### Install Synthetic Top

1. Install the synthetic top on to cabinet.

**Attention:** Handle with care when install the top. Avoid scrubbing with hard dejects. Do not hang on the top separately, must be supported by the basin cabinet.

- Apply silicone sealant to the top of cabinet.
- Put the synthetic top onto the cabinet.
- Adjust until the top is level.
- Remove any excess silicone sealant.

**NOTE:** The hot and cold water supplies must terminate with a supply shut off Valve.

### 安装一体盆

1. 安装一体盆到脸盆柜。

注意：安装台盆轻拿轻放，避免与坚硬物品摩擦。盆不能单独挂墙，需要有脸盆柜作为支撑。

- 在柜体上边缘涂硅胶。
- 将一体盆放置到脸盆柜上。
- 调节至水平。
- 除去多余硅胶。

注意：冷热水管的终端必须与供水管止水阀相连。

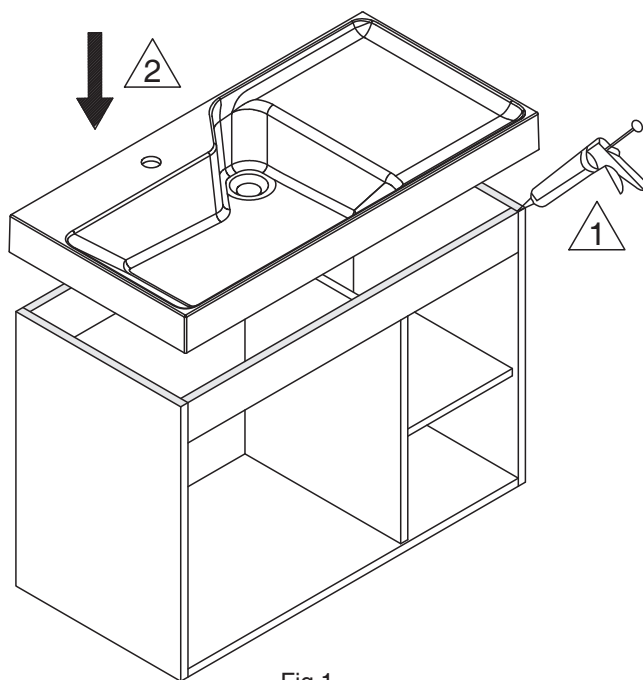


Fig.1  
图1

## 2. Connect Drainage

### a. Inwall drainage (P-Trap)

Please install the drain assembly and faucet as shown.  
Please set the water supply and drainage position  
according to the suppliers instructions. You can adjust  
the height of shelf to fit the drain assembly.

## 2. 连接排水管

### a. 入墙式排水管(P弯管)

请按照如图所示安装排水管和龙头。请遵照供应商所提供的  
说明在墙上设置进/排水管位置。您可以调节搁板的高  
度以适合排水管的位置。

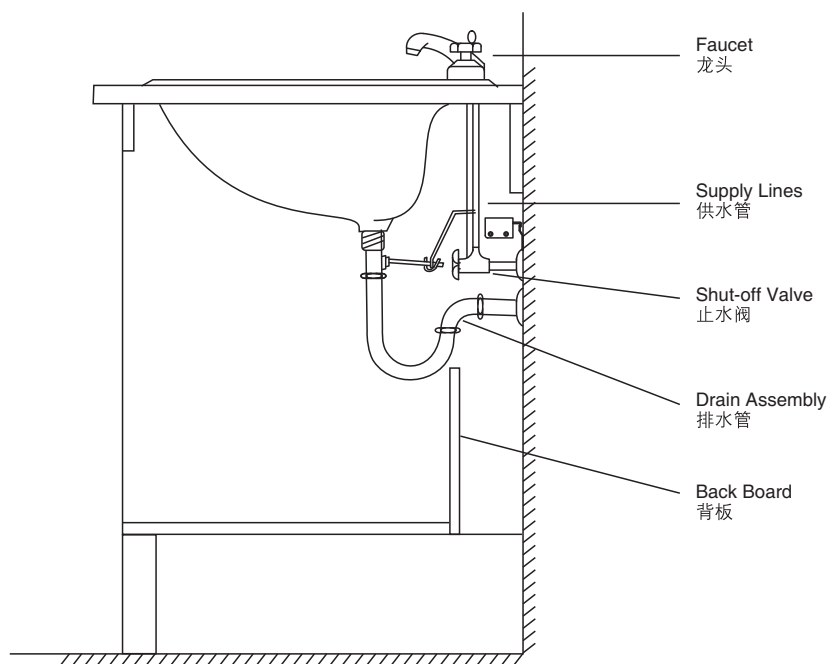


Fig.2  
图2

#### b. Floor drainage (S-Trap)

Please install the drain assembly and faucet as shown. Please set the water supply and drainage position according to the suppliers instructions. You can adjust the height of shelf to fit the drain assembly.

#### b.地排水(S弯管)

请按照如图所示设置排水管和龙头。请遵照供应商所提供的说明设进水管位置。您可以调节搁板的高度以适合排水管的位置。

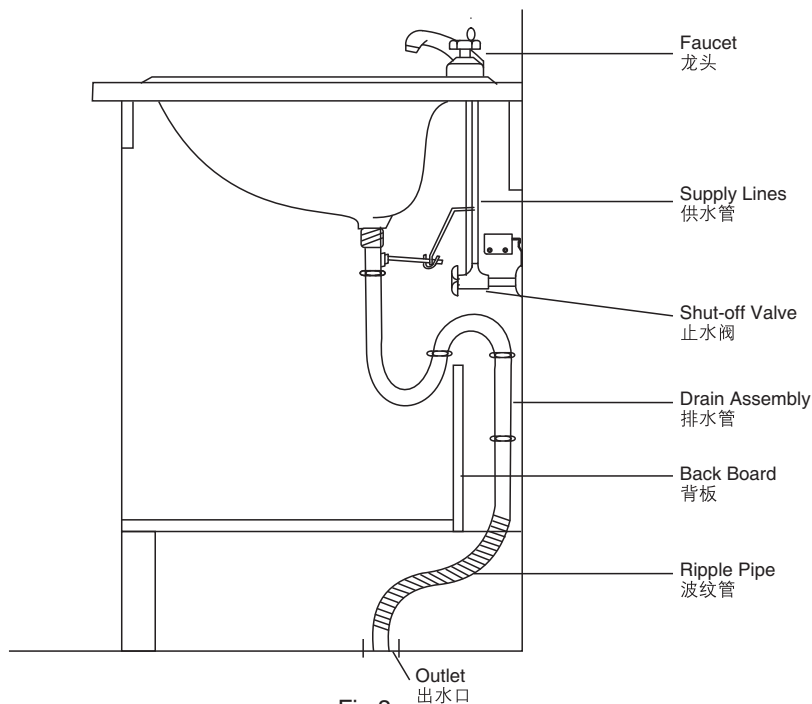


Fig.3  
图3

3. Connect the hot and cold water supplies.
4. Attach the waste, and tighten securely.
5. Open the hot and cold water valves and check the supply connections for any leaks.
6. Run water into the washbasin or vanity top, and check the drain connections for any leaks.

3. 连接冷热供水管。
4. 安装排水，并上紧。
5. 打开冷、热水阀门，检查供水管接头处是否有渗漏。
6. 打开龙头放水入脸盆，检查排水管道接头处是否有渗漏。

## USER MAINTENANCE



### WARNING! Risk of product damage.

Many cleansers contain abrasive and chemical substance which is not suitable for cleaning stainless steel, enamel, plating or plastic products. You may use mild cleansers or soaps to clean the surfaces. Wipe any splashes of cleaner solutions from the surface with clean soft cloth. Clean the top in case hair dye or cosmetics drop on it to avoid color fading.

The top should be cleaned with water and detergent. Never use a product which contains abrasive, liquid putty powder or other similar products. If you try to maintain the top with automobile wax on a regular basis, say, once a year, the impermeability of the top will be greatly upgraded. In this way, the little graffito and dirt on the top will be easily removed. If the top blurs after several years' use, you could apply the following method as a remedy to restore its luster. a) To polish the surface of the top with a piece of 1200 abrasive paper dipped with water. b) To work with a polishing paste. In some countries, the temperature of hot water will exceed 60°C. Continuous use of this kind of hot water may lead to crack on the top. Therefore, avoid to use water over 60°C in the process of installing valves.

Please do not sit, lean or step on the top.

## 日常维护



### 警告！小心产品受损。

许多清洁剂都含有研磨剂及化学物质，不可用于清洁不锈钢、搪瓷、镀层或塑料制品。这些表面须使用温和的清洁剂或皂液进行清洁，将残余洗涤剂洗干净，然后用干净的软布擦干。染发剂、化妆品等掉落台面时，请及时擦洗。否则易引起变色。

应该用清水和肥皂清洗台面。禁止使用含有磨蚀剂，液体抛光粉和类似产品的清洗产品。如果您不时地使用车用蜡对台面进行保养，大概一年一次，台面表层的防水性会大大提高。用这种方法，你将轻易地去除台面上的小划痕和污黯处。假如几年后台面变得黯淡，您也可以通过以下方法轻易进行补救，使其重新焕发光泽。您可以采用：a)用1200砂纸蘸水打磨整个台面。b)使用抛光膏。在某些国家，热水温度超过60度，持续使用这种热水，台面表面可能会产生裂缝。安装阀门时，避免水温高于60度。

日常使用时，请勿坐、倚、靠、踩踏在脸盆上。