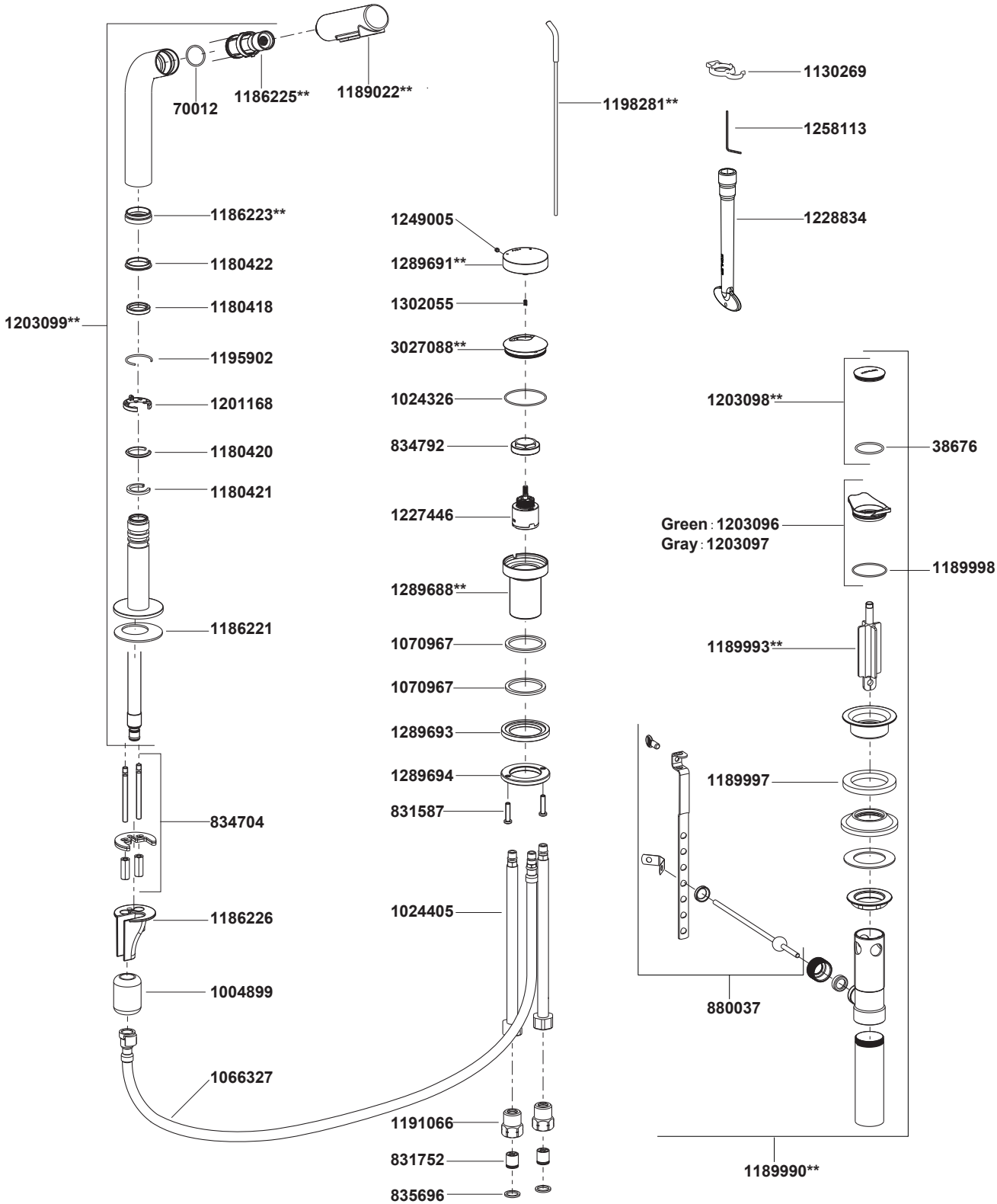


31241T-8A Grooming Lavatory Faucet (2 Hole)



**Color code must be specified when ordering.

31241T-8A Grooming Lavatory Faucet (2 Hole)

BEFORE YOU BEGIN

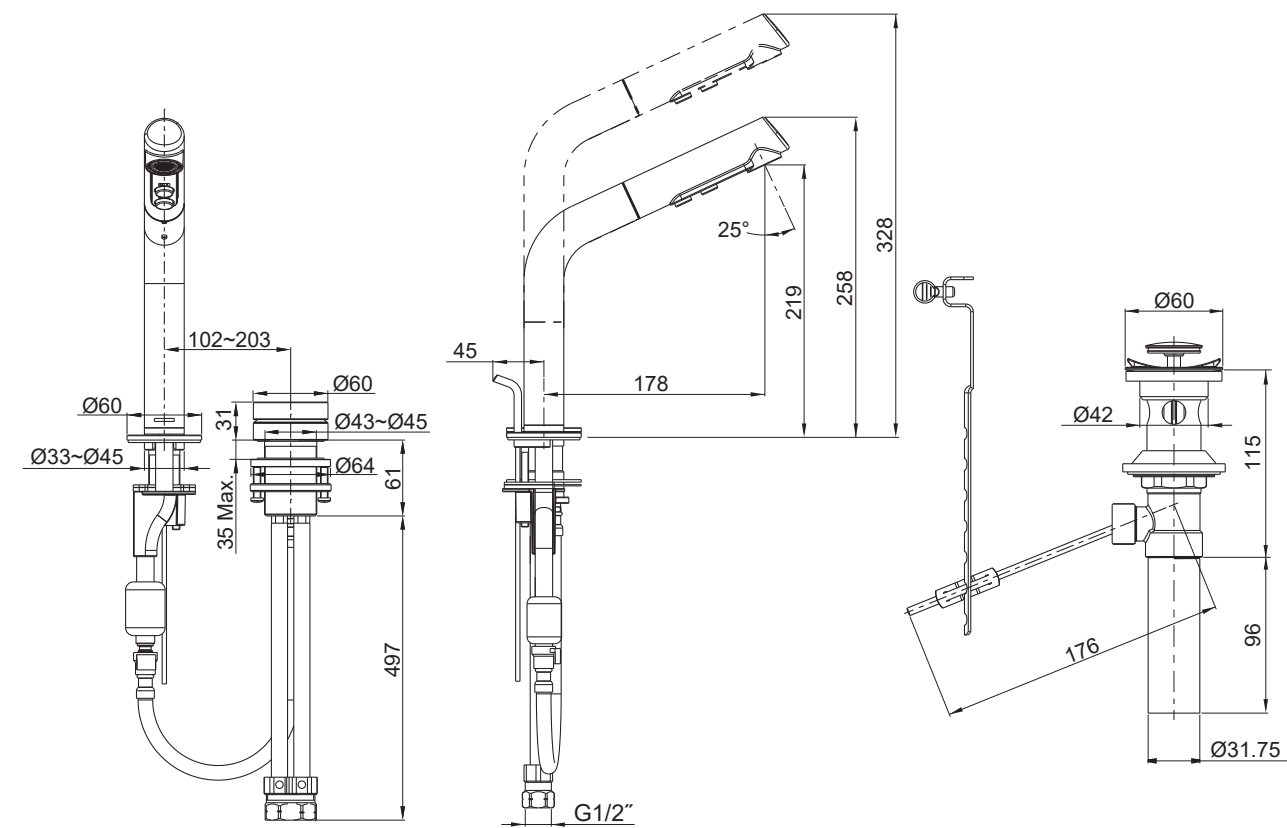
All information is based on the latest product information available at the time of publication. Kohler Co. reserves the right to make changes in product characteristics, packaging, or availability at any time without notice.

Please leave these instructions for the consumer. They contain important information.

NOTE:

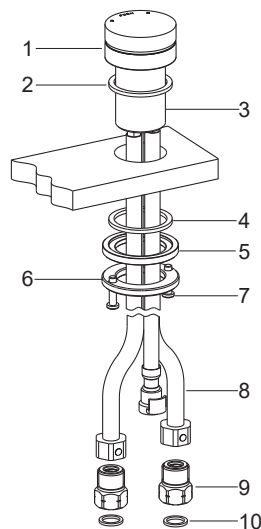
1. Flush the water supply pipes thoroughly to remove debris.
2. For new installations, assemble the faucet to lavatory before installation.
3. Recommended working pressure: 2 to 5bar.
4. The highest working pressure for spray is 0.5MPa(5bar). If it exceeds 0.5MPa(5bar), a pressure reducer is needed. The highest water and environment temperature is 60°C. Please keep spray away from heater, or it may become damaged and cause to injury to the user.
5. Observe local plumbing codes.

ROUGH-IN DIMENSIONS



31241T-8A

INSTALLATION

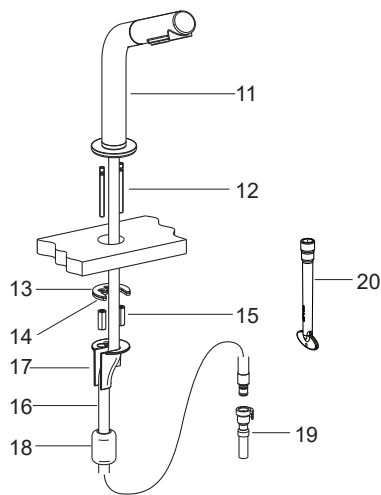


How to Install the Handle kit

Install the washer(2) into the groove of the handle kit(1). Insert the handle kit with washer to the mounting hole. Adjust the handle. Make sure the handle with red dot is on the left side and blue dot on the right side.

Ensure the screws(7) are in the threaded ring(6). From underside, slide the washer(4), metal washer(5) and threaded ring to the body(3). Position the body so that the inlet hoses(8) with red dot or blue dot are symmetrical and the inlet hose with red dot is on the left. Screw the threaded ring(6). Tighten the screws(7) to secure the handle kit.

Attach the connectors(9) with the washers(10) to water supplies. Attach the inlet hoses to the connectors. The inlet hose with red dot connects to hot water. The inlet hose with blue dot connects to cold water.

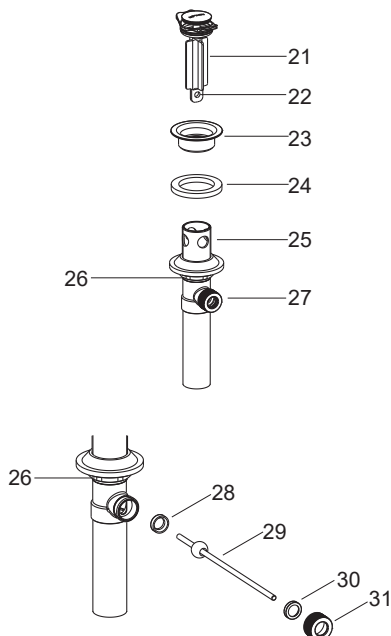


How to Install the Spout

Insert the mounting stud(12) into the bottom of the spout kit(11). Fit the spout kit into the hole of the lavatory. From underside, install the washer(13), the stainless steel washer(14) and the nut(15). Position the spout kit. Tighten the nut(15) to secure the spout kit by wrench(20).

Remove the hose(16) protector, put the hose into the hose guide(17). Insert the hose guide into the mounting stud(12).

Insert the hose(16) into counter balance weight(18). Connect the hose kit and the hose(19) of handle kit.



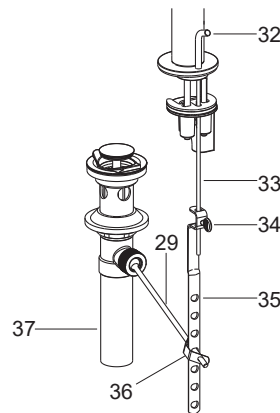
How to Install the Drain

Remove flange(23) from drain body(25). Slide the washer(24) onto the underside of the drain flange. Insert drain body from underside of lavatory with drain lever hole(27) facing to the back of the lavatory. Thread flange onto drain body. Tighten the locknut(26) by hand from the underside. Place stopper kit(21) into drain body aligning the flat side of stopper hole(22) with the drain lever hole.

NOTE: If needed apply a ring of plumbers putty around the underside of the drain flange(23), instead of using washer(24).

Place the rubber washer(28) into the drain lever hole. Put another plastic washer(30) and retaining nut(31) into the long end of the ball lever rod(29). Insert the ball lever assembly into the drain lever hole and through the stopper hole, and tighten the retaining nut.

Be sure that the ball lever points to the back of the lavatory. Tighten the locknut(26) on the drain body. Remove any excess putty. **NOTE:** Do not reposition the drain after the locknut is tightened, or you may break the putty seal.

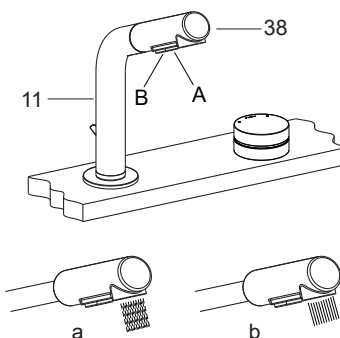


Insert the lift rod assembly(33) into the rear hole of spout. Slide lift rod into the hole in link(35). Connect the link onto ball lever rod(29) with "V" clip(36). Assemble thumb screw(34) to link.

Push the ball lever down to the open position. Position the lift rod, make sure the bottom of the lift rod knob(32) beyond about 10mm from the lavatory table. Tighten thumb screw.

Connect the tailpiece(37) to the trap.

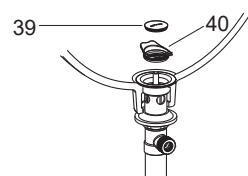
OPERATING INSTRUCTION



In front of the user, push the handle back gently, turn clockwise for hot water, and counter-clockwise for cold water.

Position the spout kit(11) height by lifting the spout. Turn on the faucet, the form of water as figure(a) shown. Press the button(A) as shown for figure(b) form of water flow. Press the button(B) as shown for the water close.

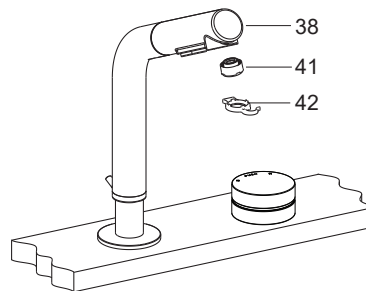
If you want to use the spray(38) by hand, take the spray and pull out the hose. **NOTE:** Please pull it gently and do not draw out the spray hose too long, or you may damage the hose and connector.



How to Clean the Drain

Turn counterclockwise the drain stopper(39). Remove and clear filter(40). Reinstall the filter and stopper.

INSTALLATION CHECKOUT



Ensure that all coupling nuts are tight. Ensure that the lever handle is in the off position. Turn on the main water supply and drain, and check for leaks. Repair as needed.

Remove the spray(38). Remove the aerator(41) with the key(42). Turn on the faucet. Run hot and cold water for about one minute to remove any debris. Remove any debris from the filter washer and aerator. Shut off the faucet. Reinstall the aerator and spray.

CLEANING INSTRUCTIONS

All Finishes: Clean the finish with mild soap and warm water. Wipe entire surface completely dry with clean soft cloth. Many cleaners may contain chemicals, such as ammonia, chlorine, toilet cleaner etc, which could adversely affect the finish and are not recommended for cleaning.

Do not use abrasive cleaners or solvents on Kohler faucets and fittings.