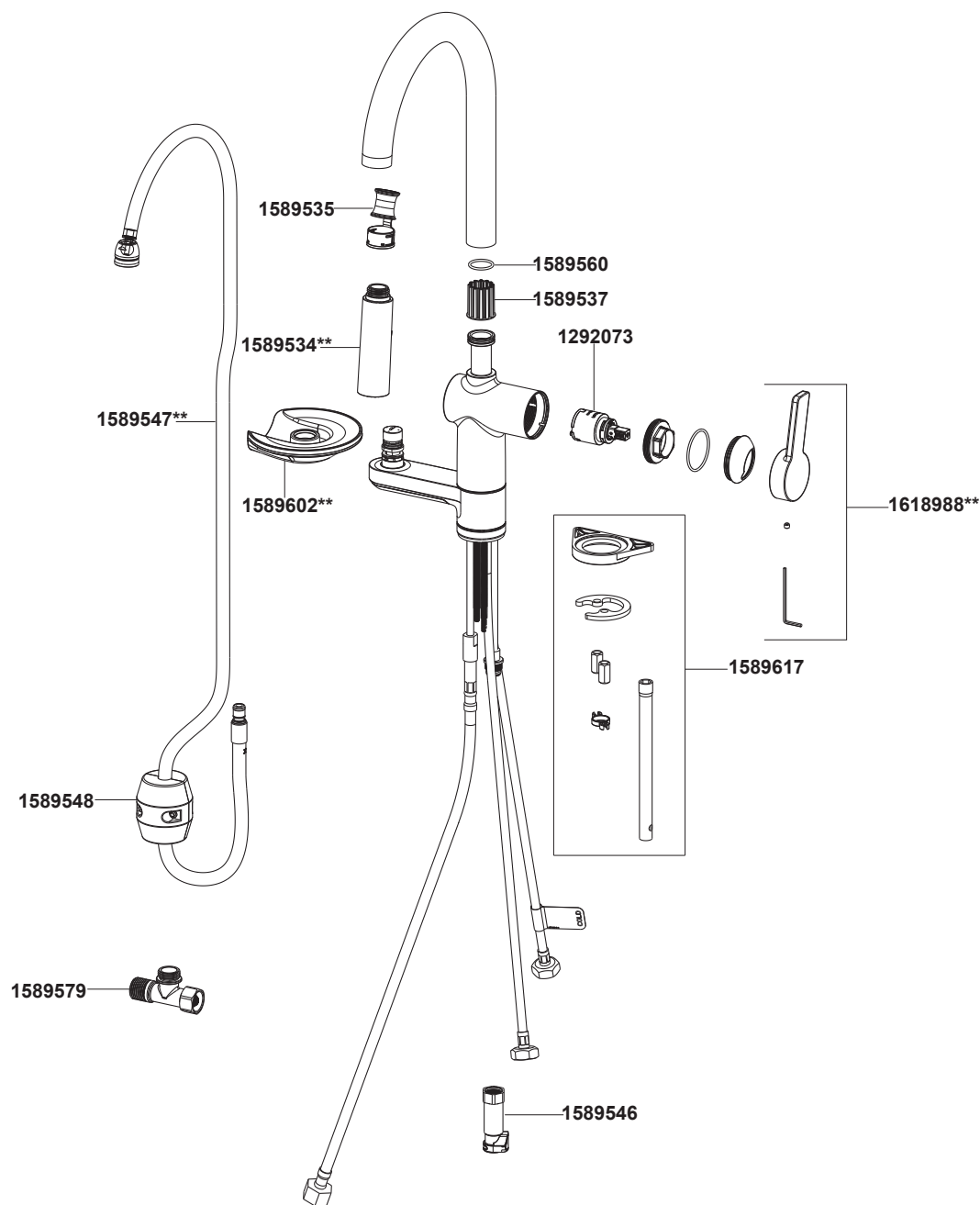


Pull Down Kitchen Faucet with Cup Rinsing

34861T-4 洗杯器下抽拉厨房龙头



****订购时请说明颜色编号**

****Color code must be specified when ordering**

Pull Down Kitchen Faucet with Cup Rinsing

34861T-4 洗杯器下抽拉厨房龙头

安装之前

所有的资料是按最新出版的产品资料编写而成。科勒公司保留任何时候不经通知即可改变产品特性、包装或产品可供类型的权利。

说明书包括重要的安装、保养及清洁方面的内容，请把这些资料交给用户阅读。

注意事项:

1. 一定要先彻底冲洗供水管以清除管道中的杂质。
2. 如果是安装新的洗涤盆，可将水龙头先装到洗涤盆上。
3. 花洒最高工作压力：**0.5MPa(5bar)**。水压超过**0.5MPa(5bar)**时必须安装减压阀。花洒最高工作温度及环境温度：**60℃**。请特别注意花洒同花洒连接的臂管须远离浴霸，否则可能损坏花洒及其密封件，甚至对使用者造成伤害。
4. 水嘴加施的水效标识表明本产品的水效等级等性能符合GB25501-2019《水嘴水效限定值及水效等级》的要求，是产品符合性的一种标识。

BEFORE YOU BEGIN

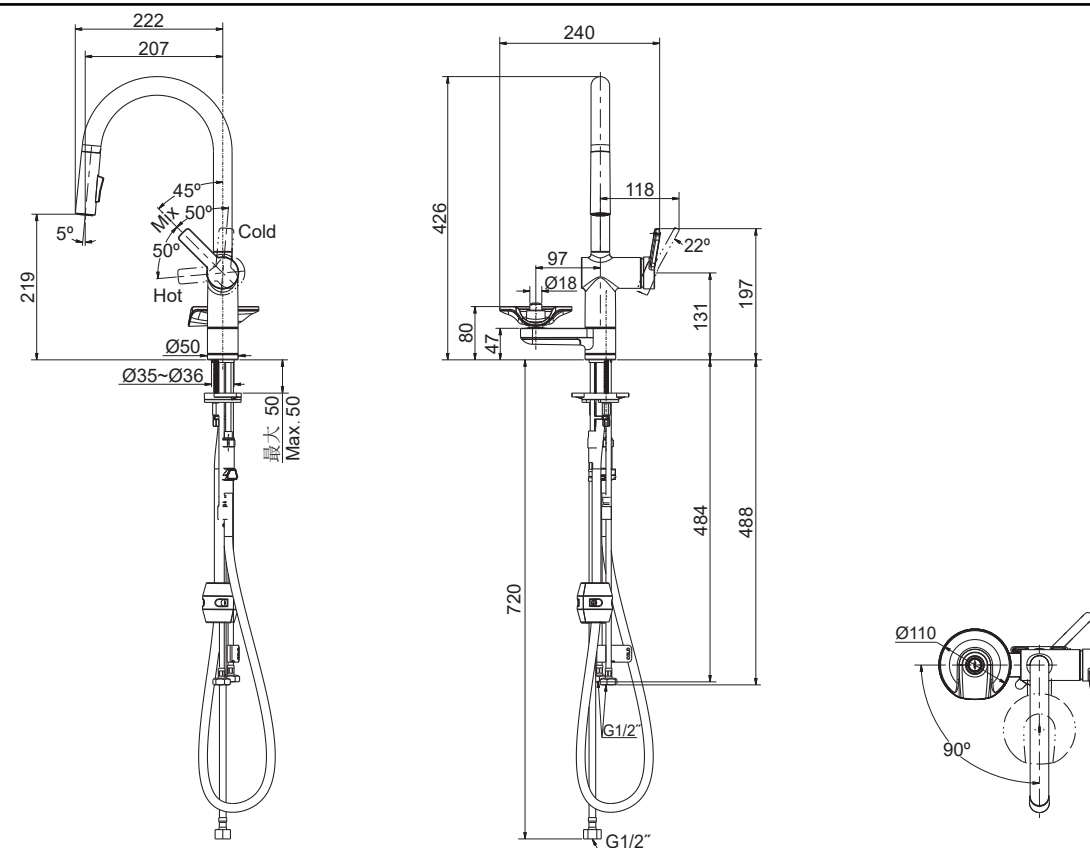
All information is based on the latest product information available at the time of publication. Kohler Co. reserves the right to make changes in product characteristics, packaging, or availability at any time without notice. Please leave these instructions for the consumer. They contain important information.

NOTES:

1. Flush the water supply pipes thoroughly to remove debris.
2. For new installations, assemble the faucet to sink before installing.
3. The highest working pressure for spray is 0.5MPa(5bar). If it exceeds 0.5MPa(5bar), a pressure reducer is needed. The highest water and environment temperature is 60°C. Please keep the spray away from heater, or it may become damaged and cause injury to the user.
4. The water efficiency label applied to the faucet indicates that the water efficiency grade and other performance of the product meet the requirements of GB 25501-2019 "Minimum Allowable Values of Water Efficiency and Water Efficiency Grades for Faucets" which is a marking of product conformity.

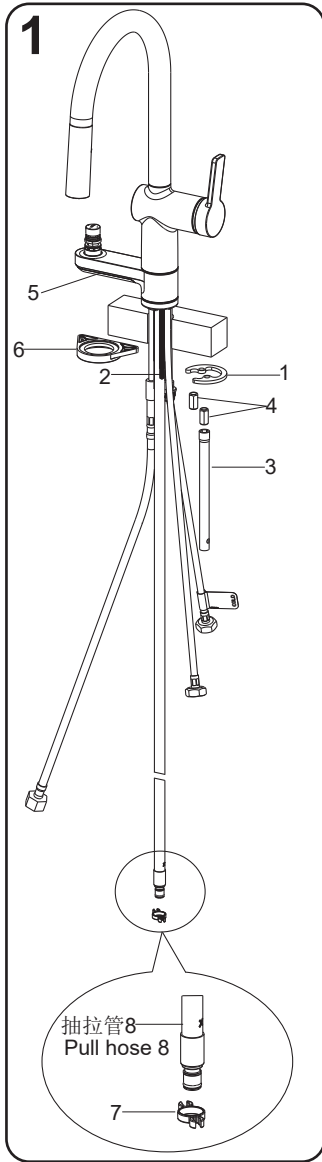
安装尺寸

ROUGH-IN DIMENSIONS



安装步骤

INSTALLATION



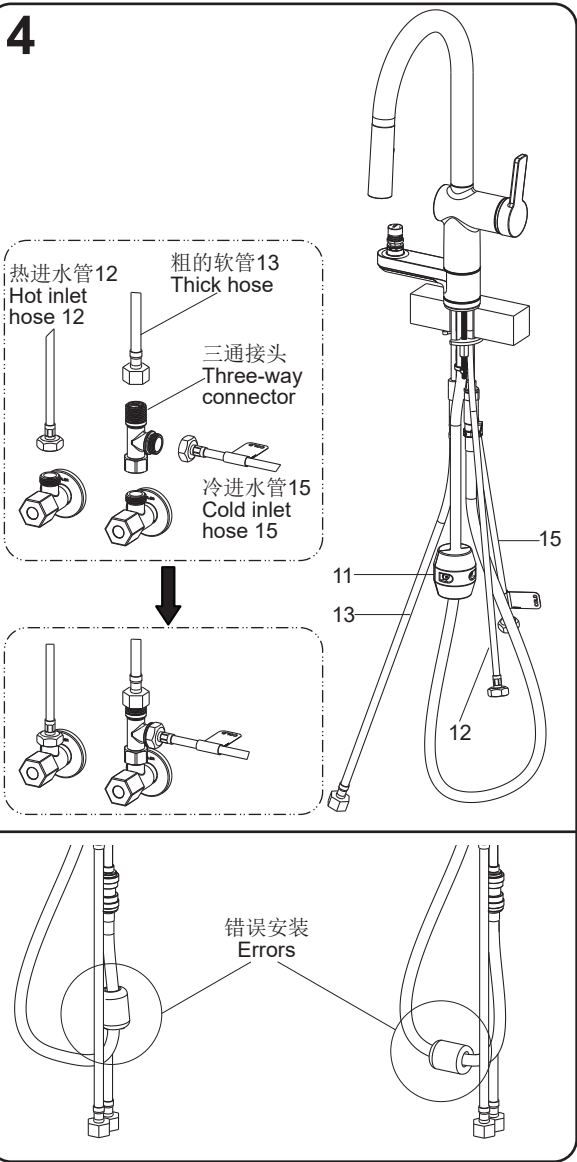
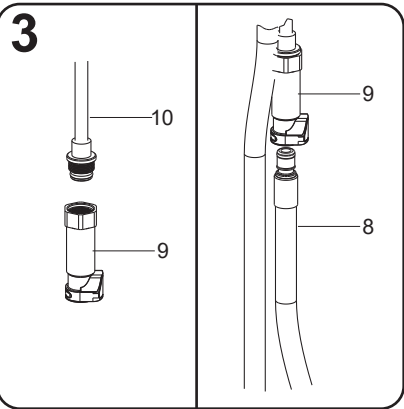
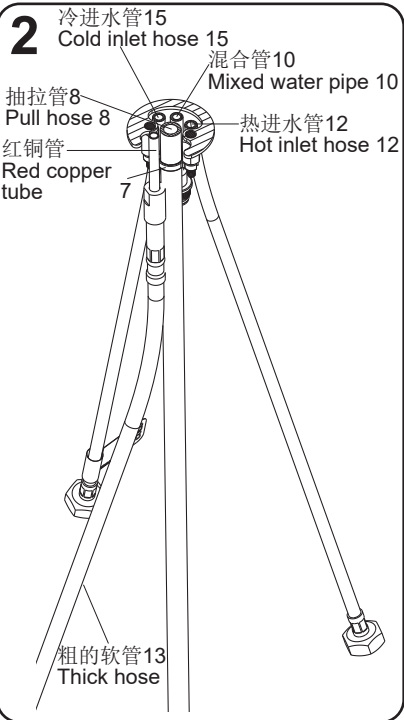
如图1所示，将龙头装入洗涤盆安装孔中，使龙头本体底部接触台面。将垫片(1)穿过螺杆(2)装入到洗涤盆底部，并用扳手(3)旋紧螺母(4)将龙头固定在洗涤盆上。

安装过程中，可以适当转动支臂(5)，以便旋紧。如果是安装薄洗涤盆，可将三角垫片(6)安装在洗涤盆底部和垫片(1)中间。

将分隔套(7)套在抽拉管(8)上插入到螺杆(2)上。
注意：按图2所示把管子分隔开。

如图3所示，将快速接头(9)用手旋紧到混合管(10)接头上。将抽拉管(8)插入到快速接头(9)。

如图4所示，用螺丝刀把重锤(11)固定在抽拉管的合适位置上。试着抽出花洒，检查花洒是否可以顺利回归原位，如果不可以，重新调整重锤的位置。



As figure 1, put the faucet body kit into the mounting hole of the sink. Make sure the body bottom is against the deck. Slide the washer(1) into the body bottom through the mounting studs(2). Tighten the nuts(4) with the tool(3) to secure the faucet to the sink.

During installation, the arm(5) can be rotated to tighten it. If installing a thin sink, the triangle gasket(6) can be installed between the sink bottom and washer(1).

Slide the sleeve(7) onto the pull hose(8), and insert it onto the mounting studs(2). **NOTE:** Separate the hoses as shown in figure 2.

As shown in figure 3, tighten the connector(9) onto the joint of the mixed water pipe(10) by hand. Insert the pull hose(8) into the connector(9).

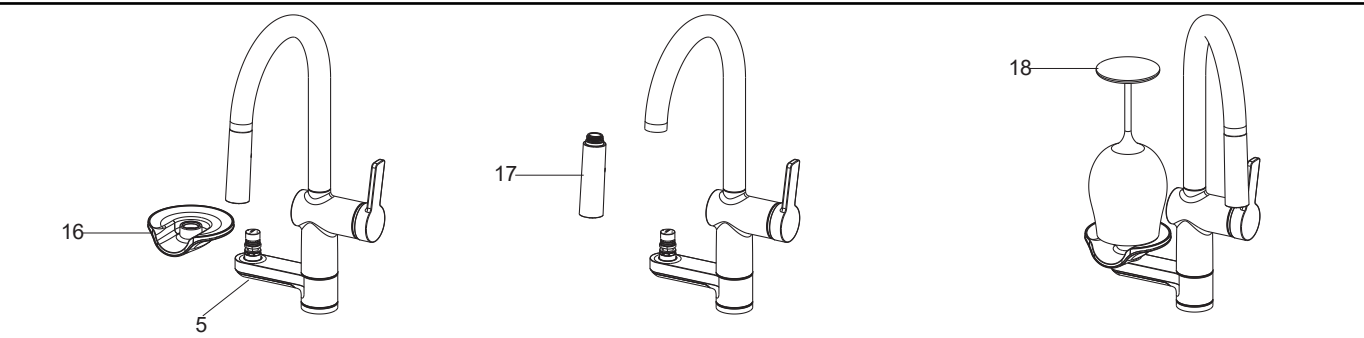
As shown in figure 4, use a screwdriver to fix the weight (11) in the appropriate position on the pull hose. Try to pull out the spray, check whether it can go back to its original position smoothly or not. If not, position the weight again.

将三通接头用活动扳手拧紧到角阀上。然后把其他软管拧紧到对应的接头上。

Tighten the three-way connector onto the angle valve with an adjustable wrench. Then tighten the other hoses onto the corresponding joints.

安装结果检查

INSTALLATION CHECKOUT



用力按下托盘(16)固定在支臂(5)上，检查并确保所有衔接处都已拧紧，确保手柄在关闭位置。打开主水源和排水系统，检查并修理有漏水的接口。

Press down firmly on the tray(16) and fix it on the arm (5). Ensure that all coupling nuts are tight. Ensure that the lever handle is in the off position. Turn on the main water supply and drain, and check for leaks. Repair as needed.

将花洒头(17)取下，打开龙头，让水流约一分钟以消除杂质。关闭水龙头，重新装回花洒头。

Remove the spray(17). Turn on the faucet, run hot and cold water for about one minute to remove any debris. Shut off the faucet. Reinstall the spray.

适当转动支臂，调整托盘出口朝水槽方向。将杯子(18，客户自备)放在托盘并下压约一分钟，检查衔接处是否有漏水及其他异常。

Rotate the arm and adjust the tray outlet towards the sink. Place the cup(18, not provided) on the tray and press down for about one minute to check for any water leakage or other abnormalities at the connection.

注意：当需要将托盘取下清洗及重新安装时，用物品遮挡，以免溅水。

NOTE: When removing for cleaning, and reinstalling the tray, cover it with an object to avoid splashing water.

使用说明

HANDLE OPERATION

轻轻打开手柄，顺时针旋转把手为冷水，逆时针旋转把手为热水。

Open the handle gently. Turn clockwise for cold water, turn counter-clockwise for hot water.

清洗托盘时，适当转动支臂，调整托盘出口朝水槽方向，将杯子放在托盘并下压。

When cleaning the tray, rotate the arm, adjust the tray outlet towards the sink, place the cup on the tray and press it down.

清洗说明

CLEANING INSTRUCTIONS

适用于所有加工处理过的表面：以中性肥皂水清洗镀层表面，再以干净的软布彻底擦干整个表面，许多清洁剂，比如氨水、去污粉及洁厕灵等，会对电镀表面造成伤害，切忌使用。

All Finishes: Clean the finish with mild soap and warm water. Wipe entire surface completely dry with clean soft cloth. Many cleaners may contain chemicals, such as ammonia, chlorine, toilet cleaner etc. which could adversely affect the finish and are not recommended for cleaning.

有磨损性的清洁用具或清洁剂也不可适用于科勒牌的水龙头及其配件上。

Do not use abrasive cleaners or solvents on Kohler faucets and fittings.

龙头本体背面标有“LEAD FREE”字样，即产品符合美国AB1953法令的要求。

"LEAD FREE" is marked on the back of the faucet signifying its compliance with the United States AB1953.