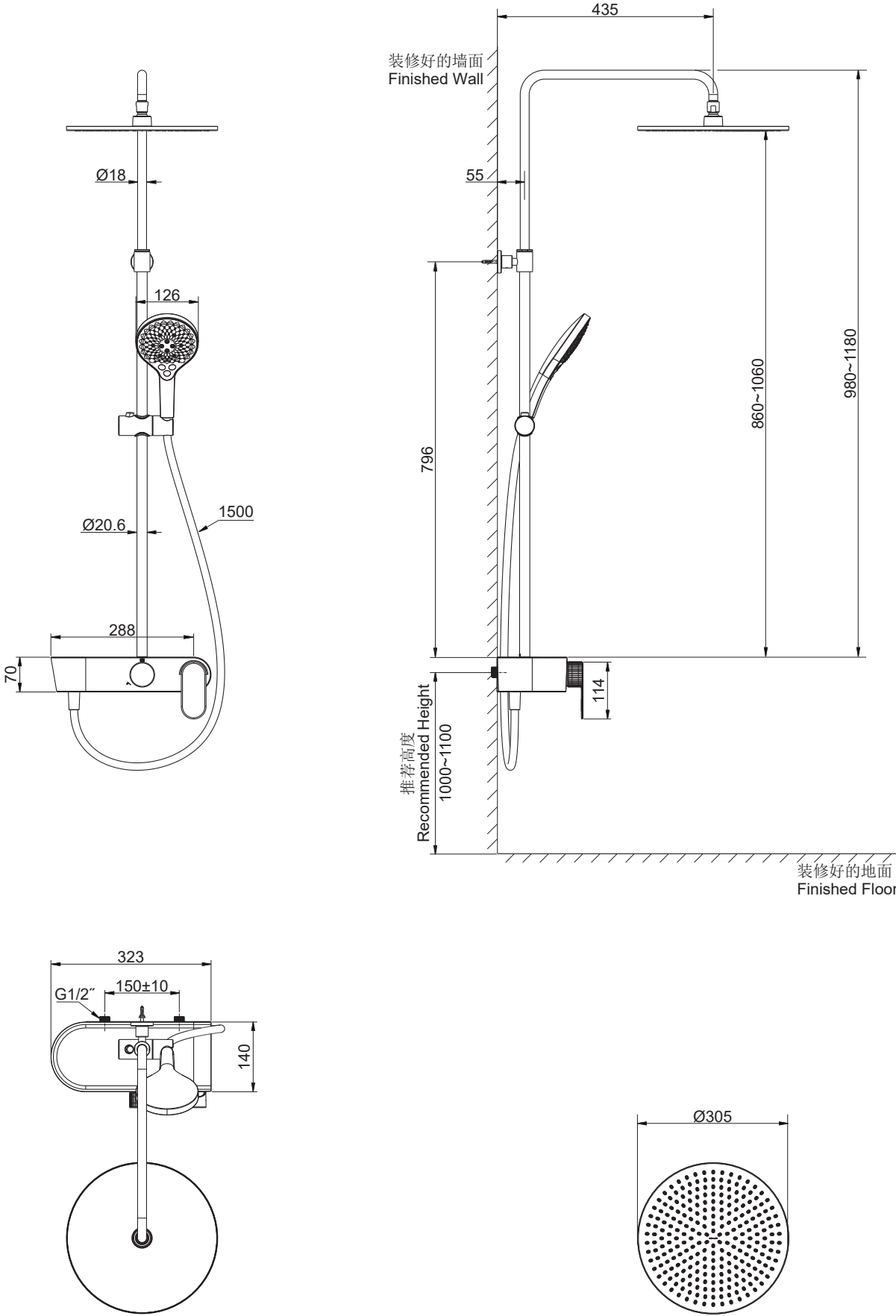
1

安装尺寸(36409T)

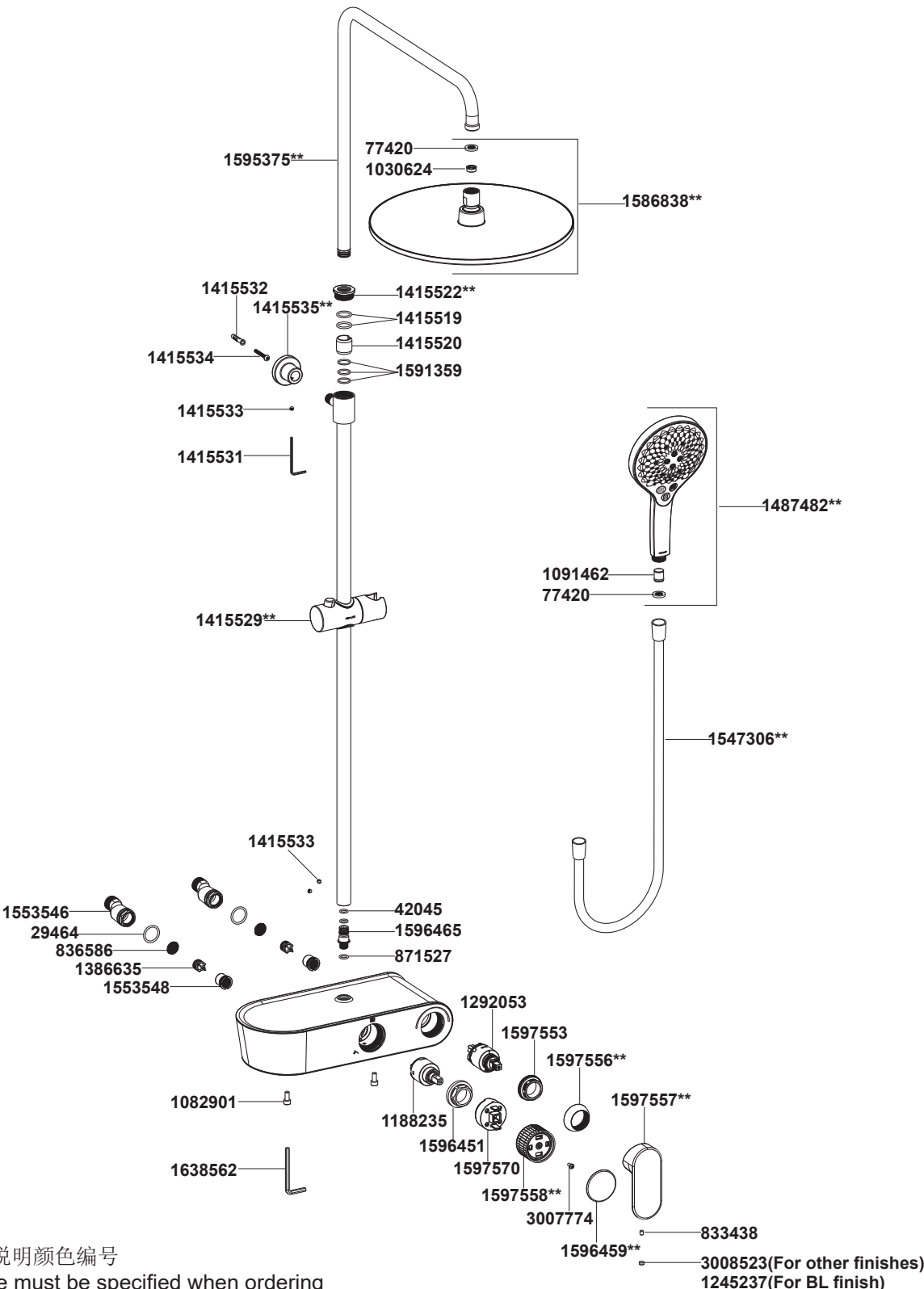
ROUGH-IN DIMENSIONS (36409T)



KOHLER®
SERVICE PARTS
零件图

斐勒
FLUENCE
2-Way Shower Column

36409T-4 双花洒淋浴柱

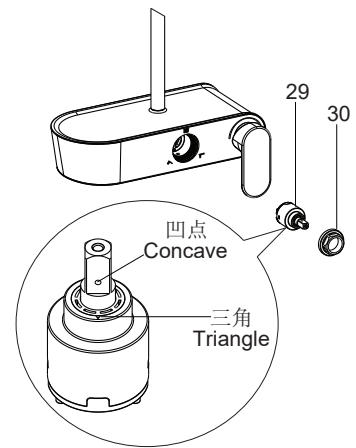


**订购时请说明颜色编号
**Color code must be specified when ordering

如何更换切换阀芯

如需更新切换阀芯，拆卸后按如下步骤装回。

将切换阀芯(29)装回龙头本体，保持阀芯初始位置，即阀芯杆凹点和三角对齐，如图所示。**注意：**装入阀芯时确保阀芯杆凹点和头顶花洒标识对齐。接着安装阀螺母(30)，建议拧紧扭矩1.5-2.0NM。

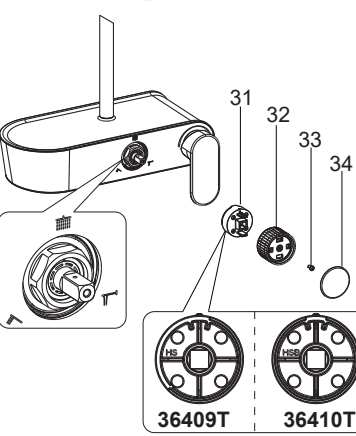


How to Replace the Diverter Valve

If you need to update the diverter valve, reinstall it according to the following steps.

Install the diverter valve(29) into the faucet body, keep the initial position of the valve (Align the concave point and triangle of the valve rod as shown in the figure). **NOTE:** When installing the valve, ensure that the concave point of the valve rod is aligned with the showerhead icon. Install the valve nut(30). The recommended locking torque for the screw is 1.5~2.0NM.

依次将适配衬套(31)、左把手(32)装入龙头本体。**注意：**适配衬套和左把手的凸起均朝上，适配衬套背面有HS(对于36409T)或HSB(对于36410T)。



Install the adapter(31) and left handle(32) into the faucet body in sequence. **NOTE:** The bulge of the adapter and left handle are facing upwards, and there is HS(for 36409T) or HSB(for 36410T) on the back of the adapter.

锁紧螺钉(33)，安装把手上盖(34)。

Tighten the screw(33) and install the handle cover(34).

清洗说明

适用于所有加工处理过的表面：以中性肥皂水清洗镀层表面，再以干净的软布彻底擦干整个表面，许多清洁剂，比如氨水、去污粉及洁厕灵等，会对电镀表面造成伤害，切忌使用。

有磨损性的清洁用具或清洁剂也不可使用于科勒牌的水龙头及其配件上。

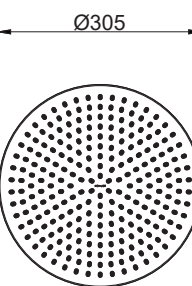
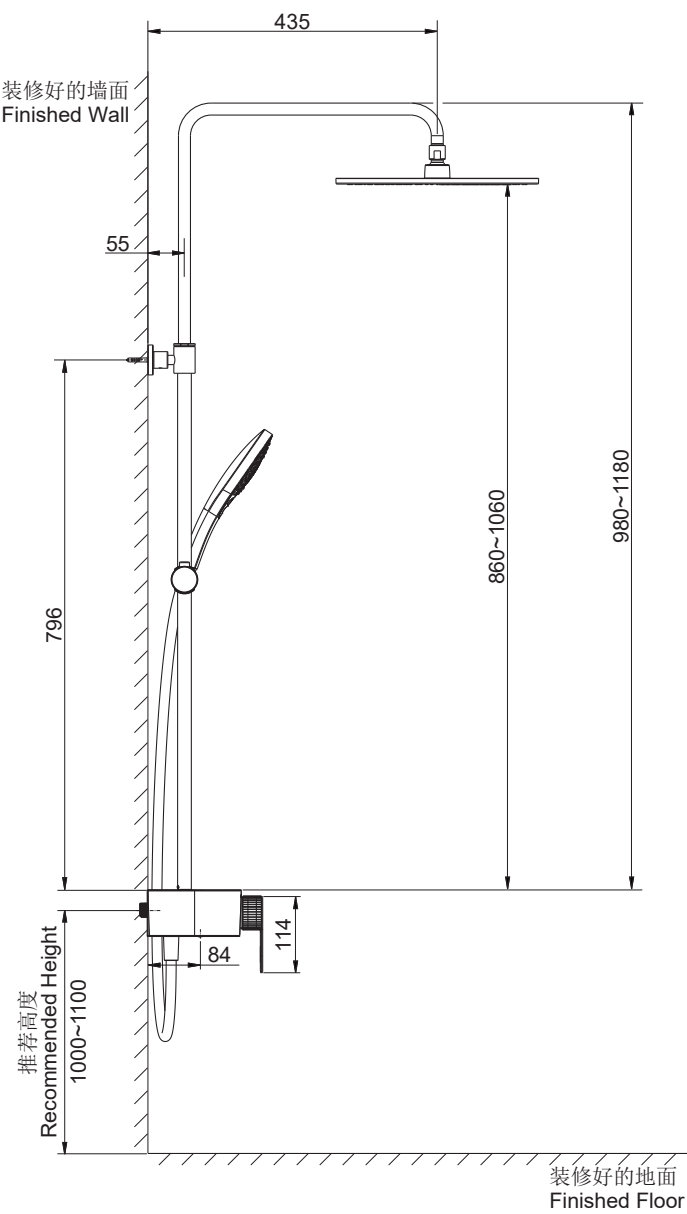
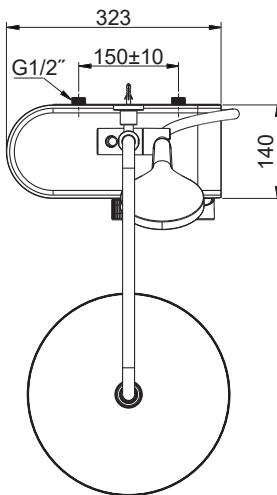
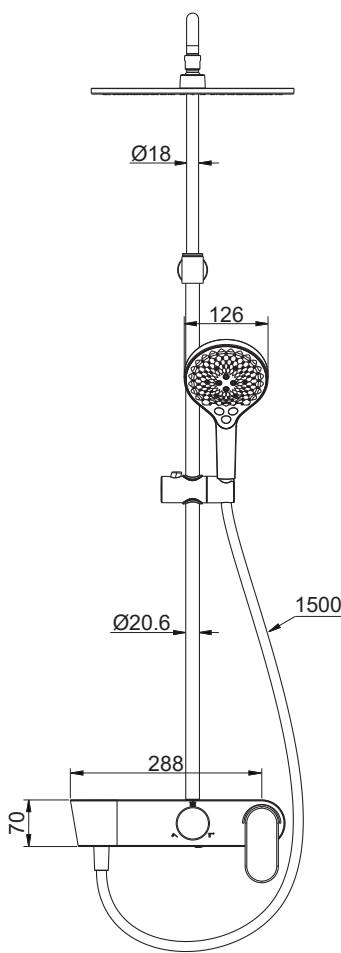
CLEANING INSTRUCTIONS

All Finishes: Clean the finish with mild soap and warm water. Wipe entire surface completely dry with clean soft cloth. Many cleaners may contain chemicals, such as ammonia, chlorine, toilet cleaner etc. which could adversely affect the finish and are not recommended for cleaning.

Do not use abrasive cleaners or solvents on Kohler faucets and fittings.

安装尺寸(36410T)

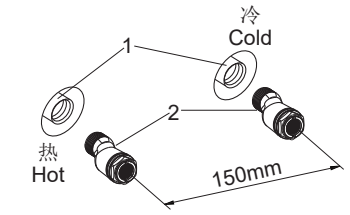
ROUGH-IN DIMENSIONS (36410T)



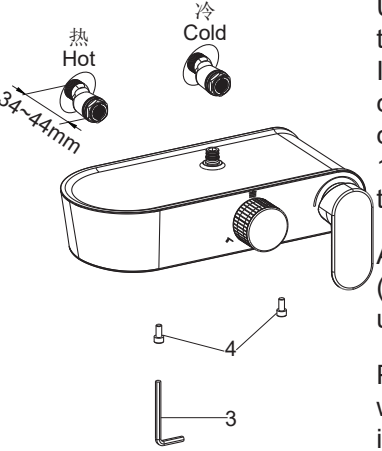
安装步骤

如何安装水龙头

为使安装顺利，G1/2"内螺纹管道配件(1)应已安装好，预留150mm间距，保持水平。管道配件要垂直并不能凸出装修好的墙面。热供水管装在左边。彻底冲洗供水管，以清除管路中的杂质。



在两个接头(2)涂上密封胶或缠绕足以密封的密封胶带，旋入冷热水管中。调节两个接头，使其中心距离为150mm，并保持同一水平。它们凸出墙面的尺寸应该在34到44mm之间。

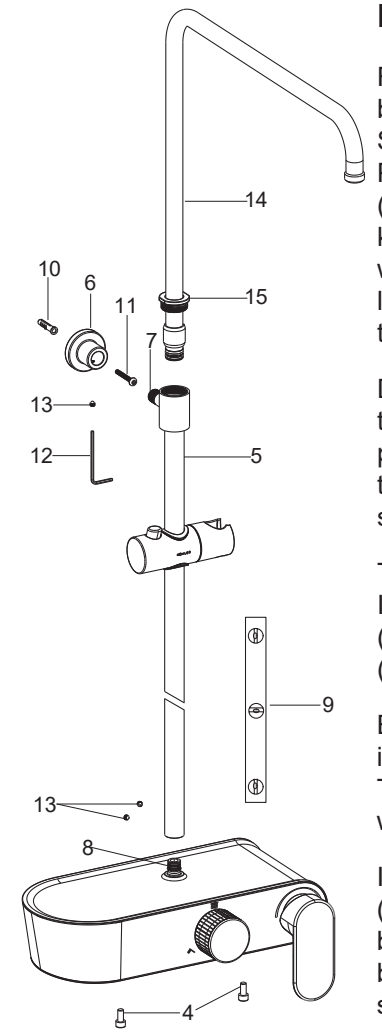


用5mm六角扳手(3)调整两个紧固螺钉(4)，将龙头本体插入两个进水接头，使本体贴紧墙面。

用5mm六角扳手预紧两个紧固螺钉，等安装完淋浴柱再锁紧。

如何安装花洒淋浴柱

试装滑杆组件(5)，以确定底座(6)的安装位置。将底座(6)旋到接头(7)上。将滑杆组件(5)插在本体连接头(8)上，需要插到底。确保滑杆组件竖直，并用水平尺(9, 用户自备)检查滑杆组件的垂直度。用铅笔在墙壁上标出底座安装孔位。分别拆下滑杆组件和底座。



根据胀塞(10)直径在墙面上标记处打孔。放入胀塞，用自攻螺钉(11)固定底座(6)。

将接头(7)旋入底座(6)中。将滑杆组件(5)插在本体连接头(8)上，需要插到底。用2.5mm六角扳手(12)锁紧三个固定螺钉(13)。

用水平尺(9, 用户自备)保证本体上表面水平。用5mm六角扳手(3)锁紧两个紧固螺钉(4)。

将弯管组件(14)装入滑杆组件(5)，然后用带状扳手或用软布垫在普通扳手和螺母之间，将螺母(15)旋紧到滑杆组件上，保持弯管出水口朝前。

INSTALLATION

How to Install the Faucet

To perform installation, installer must provide G1/2" female supply fittings(1), spaced 150mm apart and horizontally. The supply fittings should be vertical and not beyond the finished wall. Hot supply pipe must be located on the left. Flush the water supply pipes thoroughly to remove debris.

Use appropriate thread sealants or thread tape on the threads of offset connectors(1). Install two offset connectors into the hot and cold supply pipes. Adjust the center-to-center distance between the connectors to 150mm horizontally. They should extend 34 to 44mm beyond the finished wall.

Adjust two screws(4) with 5mm hex wrench (3). Install the faucet body to the connectors until it is against the finished wall.

Pre-tighten two screws with 5mm hex wrench. Tighten them after completing the installation of shower column.

How to Install the Shower Column

Rehearse slide bar kit(5) installation for the base(6) mounting location determination. Screw the base(6) onto the supporter(7). Put the slide bar kit(5) onto the connector (8) firmly to the end. Make sure the slide bar kit is vertical. Check whether it is vertical with the level(9, not provided). Mark the location of the base with a pencil. Uninstall the slide bar kit and base.

Drill holes in the finished wall according to the diameter of the anchor(10) and the position of the base. Insert the anchor into the hole. Secure the base by self-tapping screw(11).

Tighten the supporter(7) into the base(6). Install the slide bar kit(5) onto the connector (8) firmly to the end. Tighten three screws (13) with 2.5mm hex wrench(12).

Ensure the upper surface of the faucet body is horizontal with the level(9, not provided). Tighten two screws(4) with 5mm hex wrench(3).

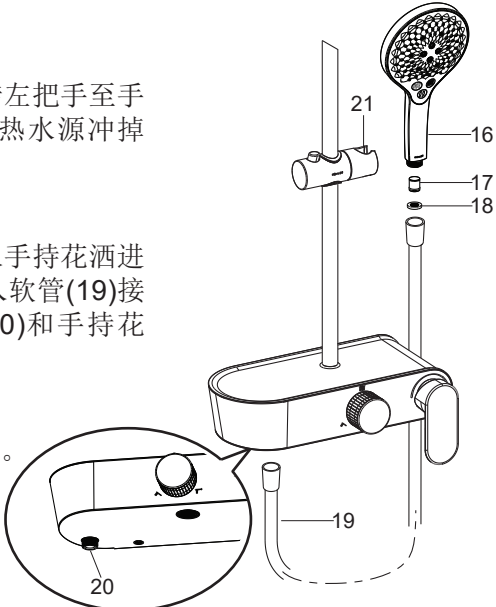
Install the tube kit(15) into the slide bar kit (14). Then screw the nut(15) onto the slide bar kit with strap wrench or soft cloth between the nut and regular wrench. Make sure the outlet of the tube kit faces front.

如何安装手持花洒

安装手持花洒(16)前，旋转左把手至手持花洒出水状态，打开冷热水源冲掉管路中的杂质。

根据需要将单向阀(17)塞入手持花洒进水口，将滤网垫片(18)放入软管(19)接头内，用软管连接接头(20)和手持花洒。锁紧所有衔接螺母。

将花洒挂在花洒挂架(21)上。



How to Install the Handshower

Ensure it is in the position for handshower (16). Flush hot and cold water supplies to remove any debris before the handshower is installed.

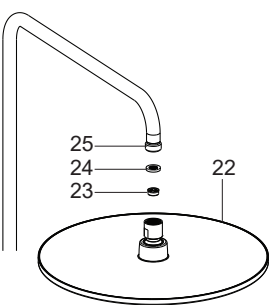
Put the check valve(17) into the handshower if needed. Put the screen washer(18) into the hose(19). Connect the connector(20) and handshower with hose. Tighten all the connectors.

Hang the handshower on the bracket(21).

如何安装头顶花洒

安装头顶花洒(22)前，旋转左把手至头顶花洒出水状态，打开冷热水源冲掉管路中的杂质。

根据需要安装限流器(23)。先取出垫片(24)，按图示方向放入限流器，再装回垫片。将头顶花洒旋到弯管组件出水口(25)上，用带状扳手锁紧。



How to Install the Showerhead

Ensure that it is in the position for showerhead(22). Flush hot and cold water supplies to remove any debris before the showerhead is installed.

Before installation, put the regulator(23) into the showerhead if needed. Take out the washer(24) and install the regulator as shown, reinstall the washer. Tighten the showerhead onto the tube kit outlet(25) with strap wrench.

安装结果检查

检查并确保所有衔接处都已拧紧，确保把手在关闭位置。

打开水源，使其流入阀芯。检查所有连接处是否漏水，根据需要修理之。

INSTALLATION CHECKOUT

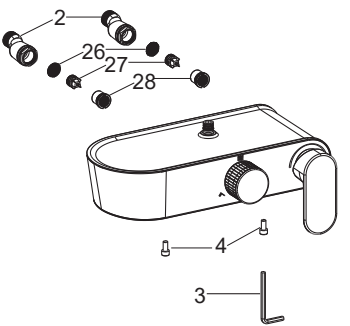
Make sure that all connections are tight, the handles are in closed position.

Turn on the water supply. Run water through the valve. Check for leakage. Repair as needed.

如何清洗滤网

滤网可起到保护龙头的作用，但长时间使用后，水垢或杂质可能会堵塞滤网，降低水流量。如果有类似情况发生，关闭水源，卸下淋浴柱。

用5mm六角扳手(3)旋出两个紧固螺钉(4)，卸下龙头。将滤网垫片(26)、单向阀(27)和滤芯(28)从进水接头(2)上旋出。用热醋清洗滤网。然后依次装回。



How to Clear the Filter

The filters can protect the faucet, but it may get obstructed and reduce water flow after a long time of use. If this happens, turn off the water supply, uninstall the shower column.

Unscrew two screws(4) with 5mm hex wrench(3) to uninstall the faucet. Unscrew the washer(26), check valve(27) and filters (28) from the connectors(2). Clean the filters by soaking them in warm vinegar. Reinstall them in turn.