

Product

- Reach compact back to wall rear entry toilet suite

Kohler Code

5233A-0



WELS RATING
(4 Star 3.5L av. flush)



Included Components

- Reach compact toilet pan
- Reach compact toilet cistern 4.5/3L
- Reach compact quiet close toilet seat with metal hinge
- Vario pan connector
- Fill valve for rear entry.
- Floor fixing bolts, anchors and chrome covers

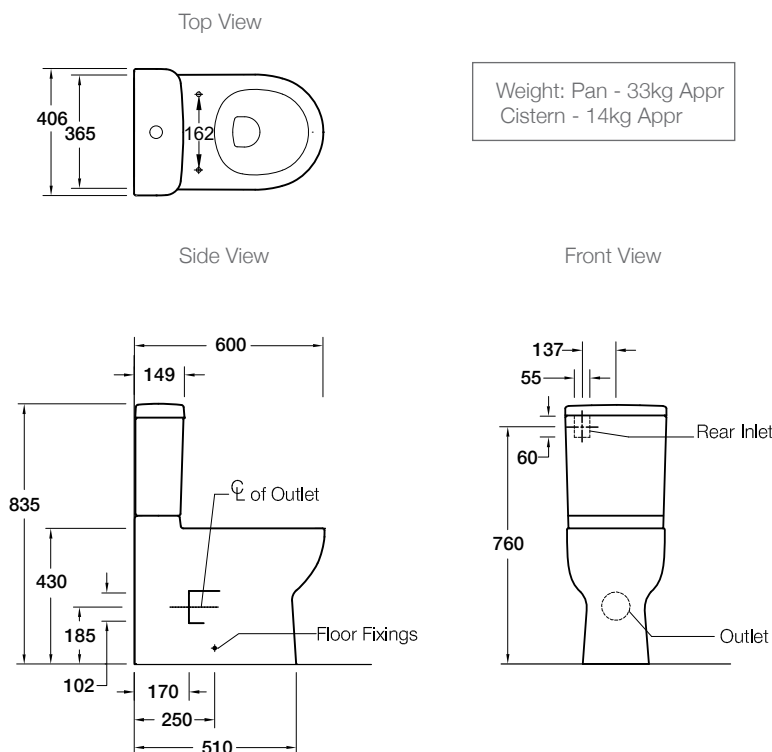
Features

- Dual flush (4.5/3L)
- Top left rear entry
- P-trap set out height: 185mm
- S-trap set out:
 - 90mm - 170mm (with vario pan connector 12503A-NA - supplied).
 - 170mm - 230mm (with long adjustable vario pan connector 77837A-NA - not supplied).
- Concealed trapway
- Box rim
- Vitreous china

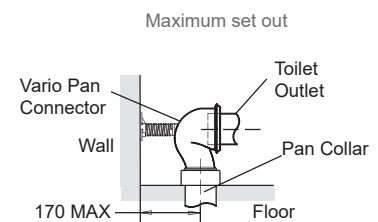
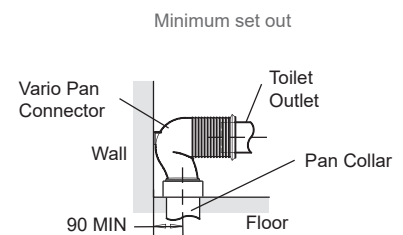
Related Products

- Reach basins
- Reach toilets

Technical Details



Vario pan connector S-trap installation



*Note: Set outs between 170-230 mm are achievable with the Long Adjustable Vario Connector 77837A-NA (not supplied).

Installation Notes:

- Water supply pressure range: 20 psi (137 kPa) - 73 psi (500 kPa).
- Can be installed as a P-trap using a straight connector (not supplied) or as an S-trap using the vario connector (supplied) and pan collar (not supplied).
- The installation of a remotely located inlet shut-off valve (not supplied) is required.