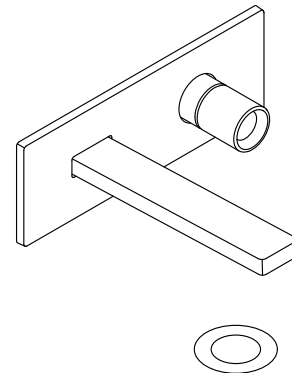


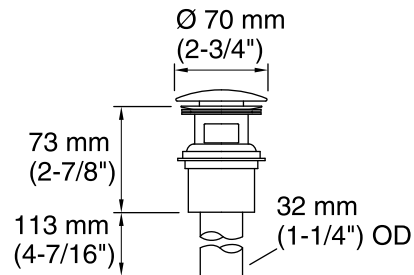
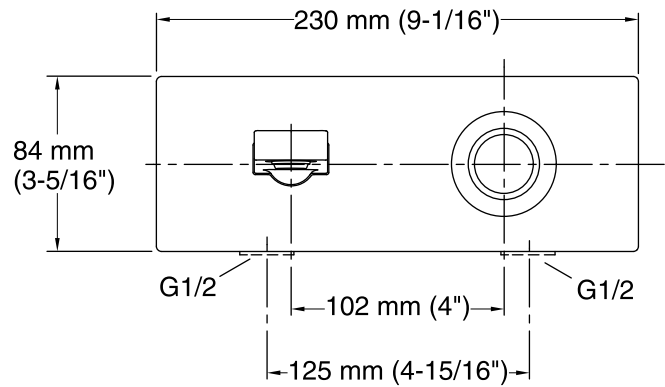
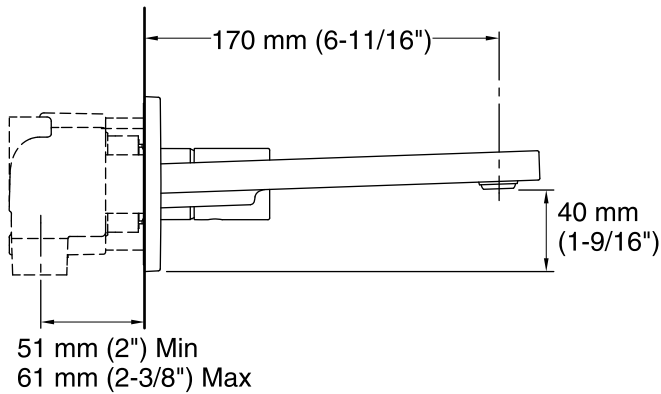
Features

- Brass construction
- Leak-free ceramic disc valve
- Durable KOHLER finishes resist corrosion and tarnishing
- Lift and turn handle
- Spout reach 170 mm
- Includes drain
- Includes directionally adjustable, laminar-flow aerator
- Includes in-wall brass valve



Codes/Standards

EN 200-2008
EN 817-2008
GB 18145-2014
TIS 2067-2552



Touch-Activated Drain

Technical Information

All product dimensions are nominal.

Faucet:

Flow rate: 2.11 gal/min (8 l/min)

Notes

Install this product according to the installation instructions.