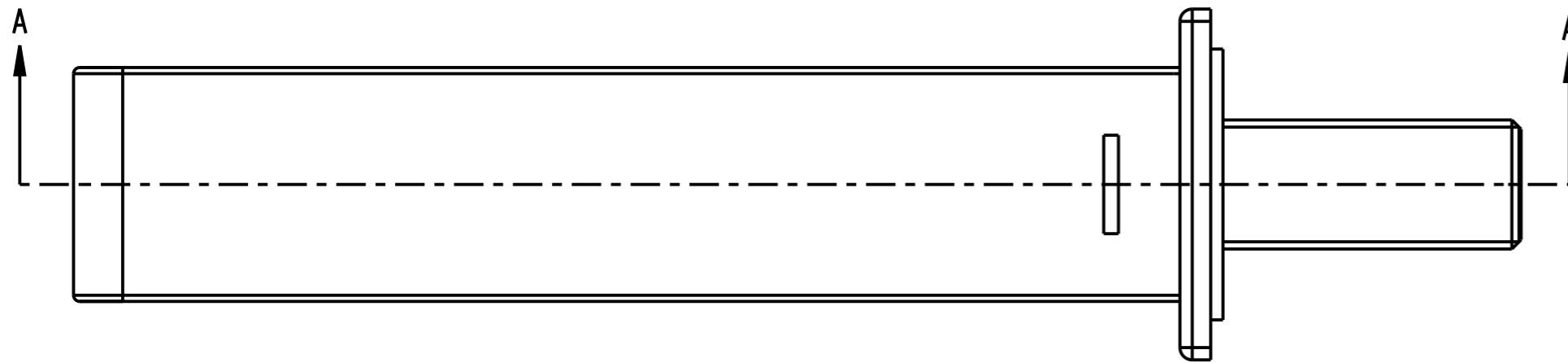


SECTION B-B

SECTION A-A



NOTES:

1. THERE IS 1 CUSTON CHARACTERISTIC SYMBOL ON THIS DRAWING
- 2 WRENCH TIGHTENED
- 3 STICKING WITH "LOCTITE 638"
- 4 TIGHTENING 11 ± 1 Nm
- 5 APPLY SILICONE OIL BEFORE ASSEMBLY
6. WATER OR AIR TEST
7. PACKAGING AND FINISHING PART "-**" ARE DEFINED ON THE BOM

Rev.	Date	Made by	Apprv. by	Description	RevLev.
-	04.25.11	GILBERT W	YY	See PCI #C1100012 (New Drawing Release)	AA
DWG REVISION RECORD					
Scale 1		Description BATH SPOUT		Unspecified general tol: ISO 2768-m From 0.5mm to 6mm: ± 0.1 mm From 6mm to 30mm: ± 0.2 mm From 30mm to 120mm: ± 0.3 mm From 120mm to 400mm: ± 0.5 mm From 0mm to 10mm: $\pm 1^\circ$; From 50mm to 120mm: $\pm 0^\circ 20'$ From 10mm to 50mm: $\pm 30'$; From 120mm to 400mm: $\pm 0^\circ 10'$	
Format A3		KOHLER GLOBAL FAUCET - CHINA		Drawing 81611N-**	
CONFIDENTIAL - EXCLUSIVE PROPERTY OF KOHLER					
					1 of 1