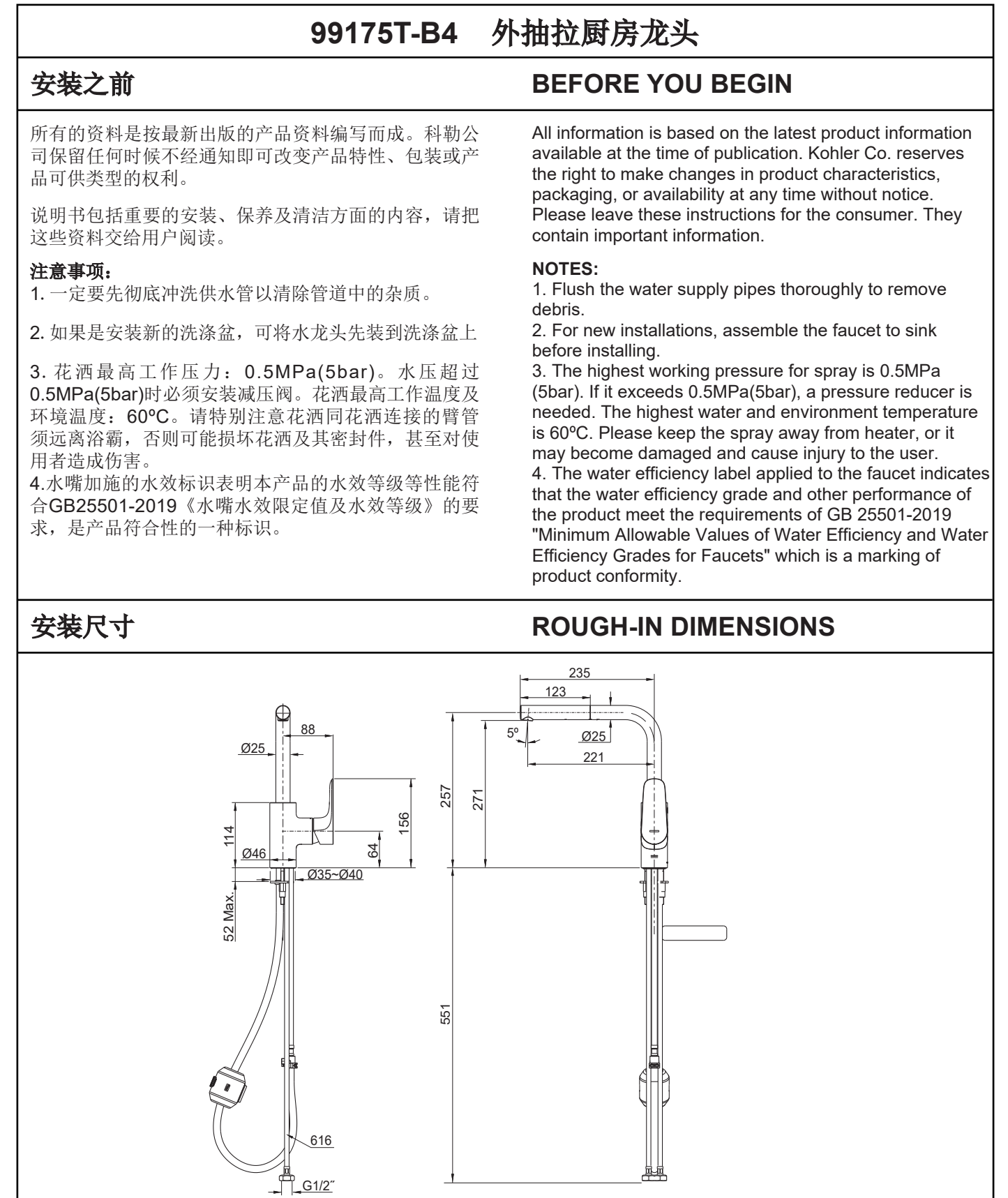


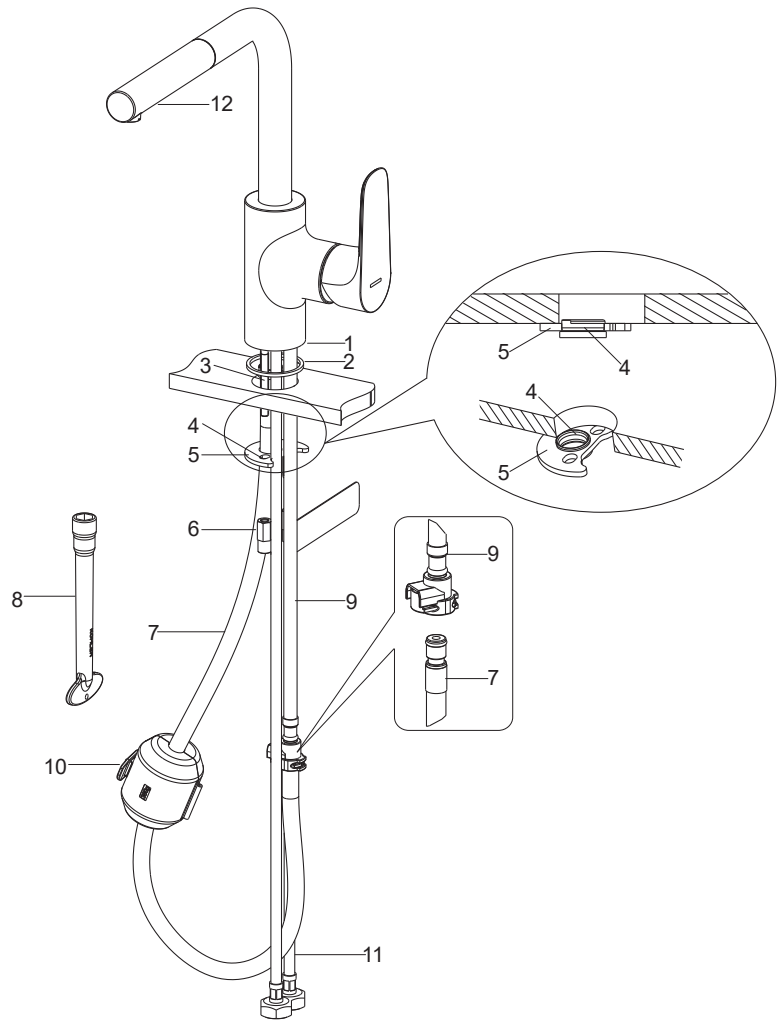
****订购时请说明颜色编号**

**Color code must be specified when ordering



安装步骤

INSTALLATION



将螺栓(3)拧紧到水龙头本体(1)底部，将垫圈(2)穿过螺栓嵌入水龙头本体底部的槽中。将软管及本体组件装入洗涤盆的安装孔中。使龙头本体的底部接触台面。

从洗涤盆下方将抽拉软管(7)穿过安装托架(5)上的导向套(4)。将带有导向套的安装托架装到两个螺栓上(导向套在左边)，将螺母(6)旋到螺栓上。调整水龙头的位置，使得把手朝右，导向套嵌入台面孔中(如图所示)。用工具(8)锁紧两螺母，将水龙头固定在洗涤盆上。

将抽拉软管(7)插入软管(9)。将重锤(10)装到抽拉软管上，并调整到位置距龙头底面距离合适后扣紧。

把进水软管(11)分别接到供水源上，贴有“COLD”标签的软管接冷水。

试抽花洒(12)，检查花洒是否可以顺利回归原位。如果不可以，重新调整配重的位置。

Tighten the studs(3) into the faucet body(1) bottom. Slide the washer(2) into the groove of the faucet body through the studs. Put the hoses and faucet body kit into the mounting hole of the sink. Let the bottom of the body against the deck.

From underside of the sink, slide the pull hose(7) into the guide(4) in the bracket(5). Install the bracket with the guide onto the studs(The guide is on the left). Screw the nuts(6) onto the studs. Position the faucet so that the handle is on the right side, the guide in the deck(as shown in the figure). Tighten two nuts by the tool(8) to secure faucet to sink.

Insert the pull hose(7) into the hose(9). Install the weight(10) onto the pull hose. Adjust the weight so that the distance is right from the faucet bottom to the weight. Tighten the weight.

Connect the hoses(11) to water supplies. The hose with “COLD” label is for cold water.

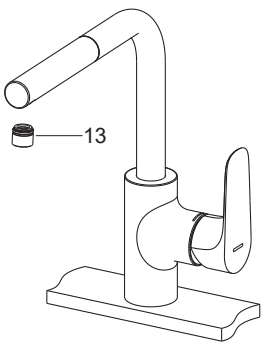
Try to pull out the spray(12), check whether it can go back to its original position smoothly or not. If not, position the weight again.

安装结果检查

INSTALLATION CHECKOUT

检查并确保所有衔接处都已拧紧，确保手柄在关闭位置。打开主水源和排水系统，检查并修理有漏水的接口。

将起泡器(13)取下。打开龙头，让水流约一分钟以清除杂质。冲洗起泡器。关闭水龙头，重新装回起泡器。



Ensure that all coupling nuts are tight. Ensure that the lever handle is in the off position. Turn on the main water supply and drain, and check for leaks. Repair as needed.

Remove the aerator(13). Turn on the faucet, run hot and cold water for about one minute to remove any debris. Remove any debris from the aerator. Shut off the faucet. Reinstall the aerator.

使用说明

HANDLE OPERATION

轻轻打开手柄，顺时针旋转把手为冷水，逆时针旋转把手为热水。

Open the handle gently. Turn clockwise for cold water, turn counter-clockwise for hot water.

清洗说明

CLEANING INSTRUCTIONS

适用于所有加工处理过的表面：以中性肥皂水清洗镀层表面，再以干净的软布彻底擦干整个表面，许多清洁剂，比如氨水、去污粉及洁厕灵等，会对电镀表面造成伤害，切忌使用。

有磨损性的清洁用具或清洁剂也不可用于科勒牌的水龙头及其配件上。

All Finishes: Clean the finish with mild soap and warm water. Wipe entire surface completely dry with clean soft cloth. Many cleaners may contain chemicals, such as ammonia, chlorine, toilet cleaner etc. which could adversely affect the finish and are not recommended for cleaning.

Do not use abrasive cleaners or solvents on Kohler faucets and fittings.

龙头本体背面标有“LEAD FREE”字样，即产品符合美国AB1953法令的要求。

"LEAD FREE" is marked on the back of the faucet signifying its compliance with the United States AB1953.