

Kohler India Corporation Pvt. Ltd.
6th Floor, Office Block
Ambience Mall, Ambience Island, NH-8
Gurgaon-122002
Haryana, India

Customer Care No : 1800 103 2244 (Toll Free) & +91-124-4319685 / 86
Customer Care Email : indiacustomercare@kohler.com
www.kohler.co.in

99482IN-4-CP WM COLD ONLY KITCHEN FAUCET

BEFORE YOU BEGIN

All information is based on the latest product information available at the time of production. Kohler Co. reserves the right to make changes in product characteristics, packaging, or availability at any time without notice.

Please leave these instructions for the consumer. They contain important information.



NOTES :

- 1. Flush the water supply pipes thoroughly to remove debris.
- 2. Inspect the supply tubing for damage. Replace as necessary.
- 3. Observe local plumbing codes.
- 4. Check for leaks before covering the pipes, repairs as needed.

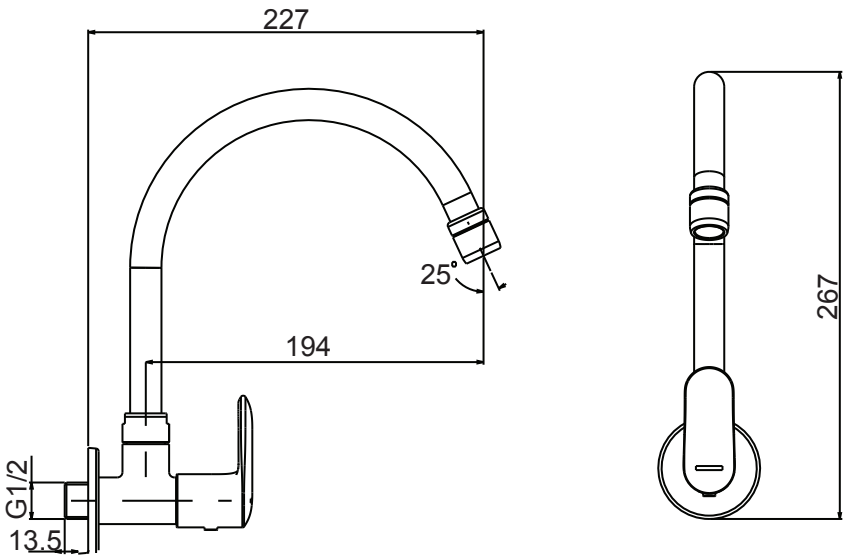
CLEANING INSTRUCTION

Clean the finish with mild soap and warm water. Wipe entire surface completely dry with clean soft cloth. Many cleaners may contain chemicals, such as ammonia, chlorine, toilet cleaner etc. which could adversely affect the finish and are not recommended for cleaning.

Do not use abrasive cleaners or solvents on Kohler faucets and fittings.

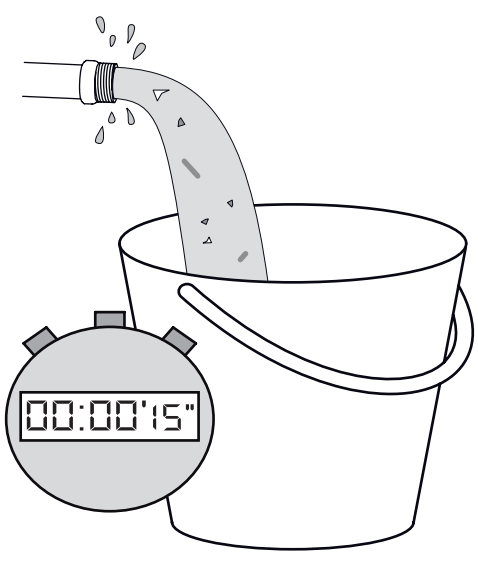
	P	Bar	0.5 < 3 < 5.5
	T	°C	< 65

ROUGH-IN DIMENSIONS

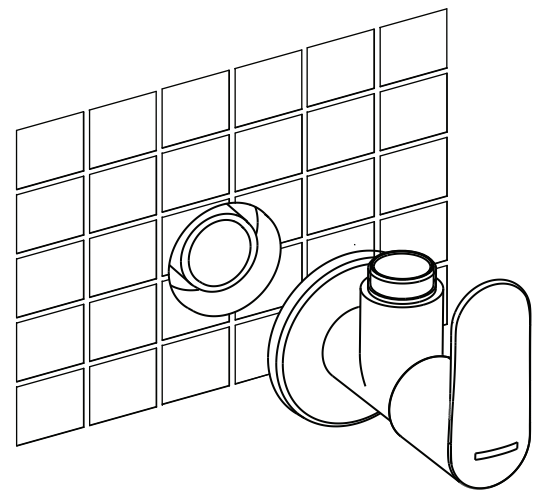


INSTALLATION

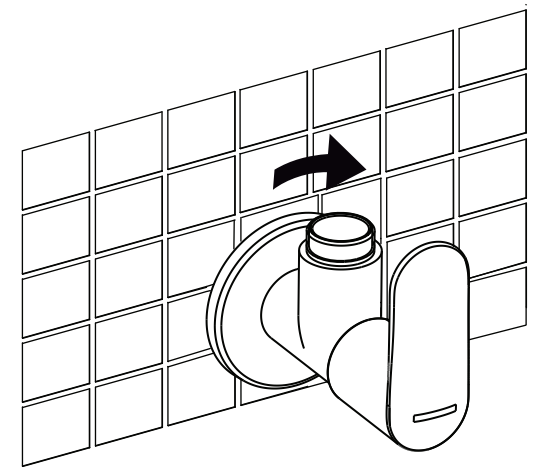
1



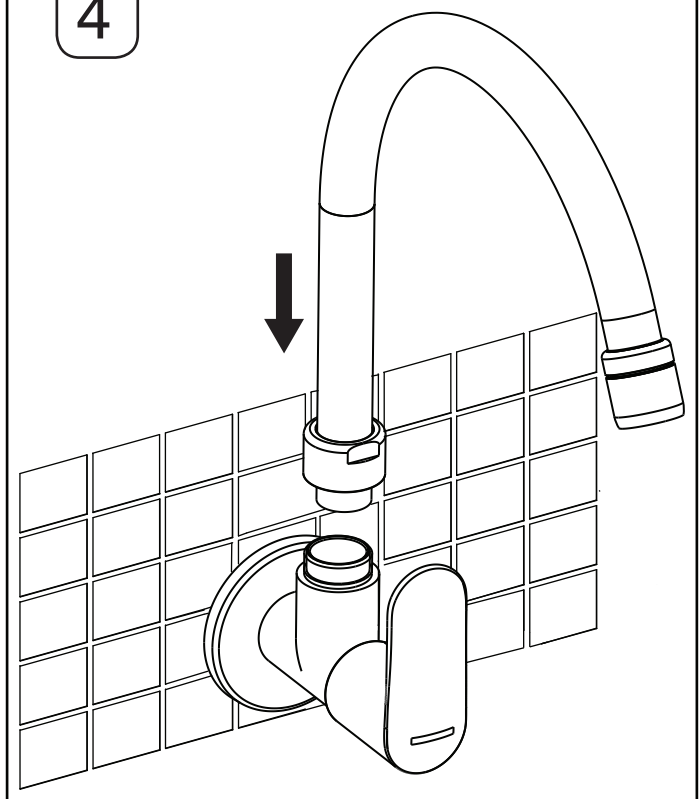
2



3

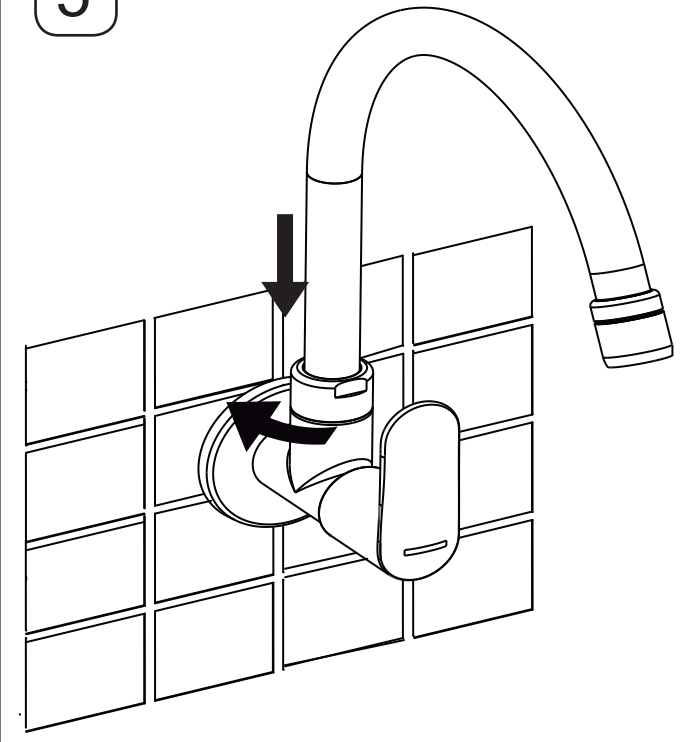


4

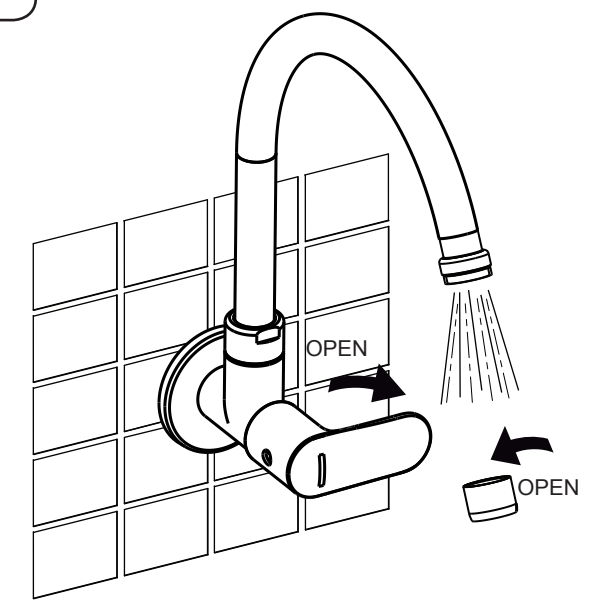


INSTALLATION CHECKOUT

5



6



7

