

Ann Sacks Mosaics

Our ANN SACKS Mosaic Collection is versatile and creative, offering bold and graphic designs alongside traditional and classic creations. Choose from any of our exclusive ANN SACKS patterns or create your own unique design.

RECOMMENDED USE

- All vertical and horizontal indoor applications
- Please see Ann Sacks slip resistance and wet flooring application statement to determine usage in a wet area
- Outdoor use subject to stone used, climate, and method of installation



residential floor



high-traffic



outdoor



wall



shower wall



INSTALLATION AND MAINTENANCE

- Please reference the TCNA handbook for installation of stone tile (www.tcnatile.com)
- Product is manufactured with a Mylar face. Follow instructions included with each shipment and available on intranet for installation
- All designs are designed to interlock but can be tailored to fit each individual installation

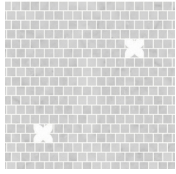
Mosaics	Specialty: Abbey, Anderson, Avalon, Bishop Bloom, Blossom, Cartman, Catalina, Caysen, Circle Square - Single, Classic Vine, Cleopatra, Crosshatch, Dafina, Enclave, Eros, Fallen Leaf, Findley, Flower Power, Gallery, Geneva, Geometric, Gershwin, Greek Key, Harper, Hollywood Squares, Ipanema, Linea, Lotus, Matchsticks, McConnell, Ming, Monaco, Opera, Oval Blend, Oval Link, Palatino, Pelts, Pendleton, Pinwheel, Plumeria, Reye, Ring Toss, Simple Leaf Lattice Large, Square Links, Square Weave, Tempest, Topiary, Triple Weave #1, Triple Weave #2, Triple Weave #3, Windsor Grande	Simple Field: Basketweave #1, Basketweave #2, Basketweave #3, Brick Offset, Brick Straight, Circle Square #1, Circle Square #2, Circle Square #3, Herringbone, Loom, Offset, Straight, Tolliver Diamonds, Triple Weave #1, Triple Weave #2, Triple Weave #3, Twill Weave, Waffle Weave	Trims & Moldings: Abbey Border, Bishop Border, Blossom Border, Cartman Border, Circle Square Border, Classic Vine Border, Fallen Leaf Border, Flower Power Border, Gallery Border, Greek Key Border, Hollywood Squares Border, Ipanema Border, Linea Border, Lotus Border, Matchsticks Border, Ming Border, Opera Border, Oval Link Border, Pelts Border, Pendleton Border, Pinwheel Border, Ring Toss Border, Topiary Border, Windsor Grande Border
Material	Natural Stone		
Color	Extensive color palette available using a blend of limestone, marble and travertine.		
Size	Designs can be custom sized to fit any project		
Lead Time	Typical Lead Times are 4-6 weeks <i>(Lead Times are subject to change).</i>		

*Please note: variations in color, shade, surface texture and size are natural characteristics of all our products and should be expected. Images shown are representative, but may not indicate all variations in these characteristics.

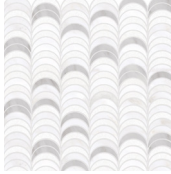
ANN SACKS.

Ann Sacks Mosaics

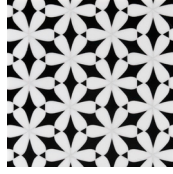
Specialty



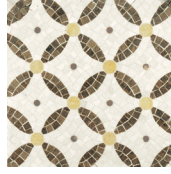
NEW Anderson



NEW Avalon



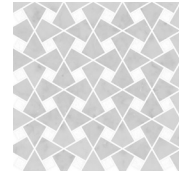
Bloom



Cartman



NEW Catalina



NEW Caysen



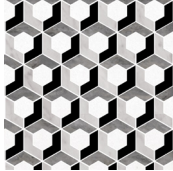
Cleopatra



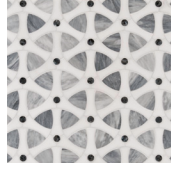
NEW Crosshatch



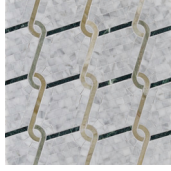
NEW Dafina



NEW Enclave



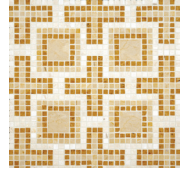
Eros



Findley



Flower Power



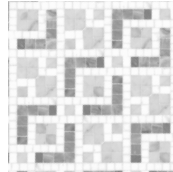
Geneva



Geometric



Gershwin



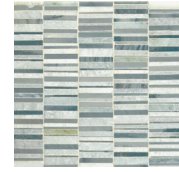
NEW Harper



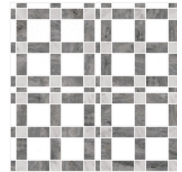
Hollywood Squares



Ipanema



Matchsticks



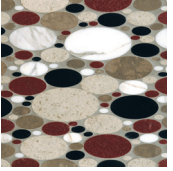
NEW McConnell



NEW Monaco



Opera



Oval Blend



Oval Link



Palatino



Pelts



Pendleton



NEW Reye



Ring Toss



Simple Leaf Lattice Large



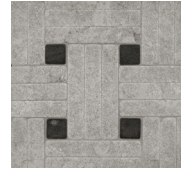
Squareweave



Tempest



Topiary Mural



Triple Weave 1 with Dot



Triple Weave 2 with Dot



Triple Weave 3 with Dot

Not pictured: Abbey, Bishop, Blossom, Circle Square Single, Classic Vine, Fallen Leaf, Gallery, Greek Key, Linea, Lotus, Ming, Pinwheel, Plumeria, Square Links, Windsor Grande

*Please note: variations in color, shade, surface texture and size are natural characteristics of all our products and should be expected. Images shown are representative, but may not indicate all variations in these characteristics.

1/19/2016

ANN SACKS.

www.annsacks.com | 1.800.278.8453

Ann Sacks Mosaics

Simple Field



Basketweave 1



Basketweave 2



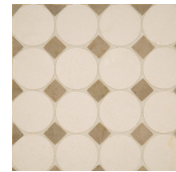
Basketweave 3



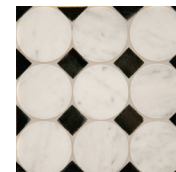
Brick Offset



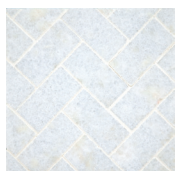
Circle Square 1



Circle Square 2



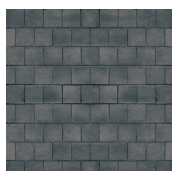
Circle Square 3



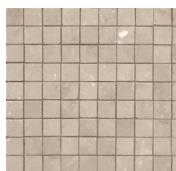
Herringbone



Loom



Offset



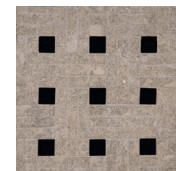
Straight
Stacked



Tolliver
Diamonds



Triple Weave 1



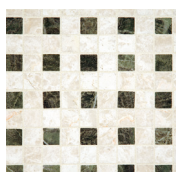
Triple Weave 2



Triple Weave 3

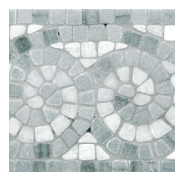


Twill
Weave



Waffle
Weave

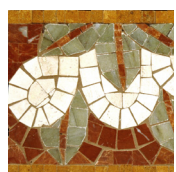
Trims & Moldings:



Abbey
Border



Bishop
Border



Blossom
Border



Cartman
Border



Circle Square
Border



Classic Vine
Border



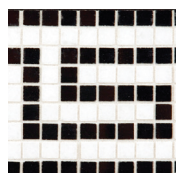
Fallen Leaf
Border



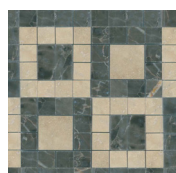
Flower Power
Border



Gallery
Border



Greek Key
Border



Hollywood
Squares Border



Ipanema
Border



Linea
Border



Lotus Border

*Please note: variations in color, shade, surface texture and size are natural characteristics of all our products and should be expected. Images shown are representative, but may not indicate all variations in these characteristics.

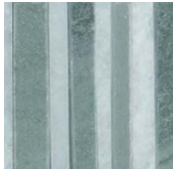
1/19/2016

ANN SACKS.

www.annsacks.com | 1.800.278.8453

Ann Sacks Mosaics

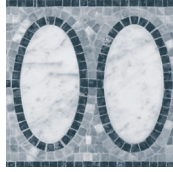
Trims & Moldings (continued):



Matchsticks
Border



Ming Border



Opera Border



Oval Link
Border



Pelts Border



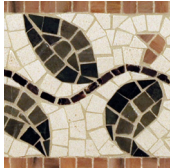
Pendleton
Border



Pinwheel
Border



Ring Toss
Border



Topiary Border



Windsor Grande
Border

*Please note: variations in color, shade, surface texture and size are natural characteristics of all our products and should be expected. Images shown are representative, but may not indicate all variations in these characteristics.

1/19/2016