

MADE Fade by Kelly Wearstler

A spectrum of artisanal glazes is showcased in Fade, a new stoneware collection by Kelly Wearstler. Handmade in our Portland, Oregon factory, Fade exemplifies Wearstler's enduring exploration into what is possible in ceramic art. Utilizing a skilled layering technique when applying the glazes and firing at high temperatures, the result is an enchanting ombre effect. Available in six distinct glaze gradients applied to 3"x9" or 9"x9" field allows for a combination of various graphic patterns when installed.



RECOMMENDED USE

- Suitable for all indoor wall applications
- Suitable for floor applications
- Suitable for outdoor vertical use dependent upon climate and method of installation
- Please see Ann Sacks slip-resistance and wet flooring application statement to determine usage in a wet area



wall



shower wall

INSTALLATION AND MAINTENANCE

- Install per industry standards for ceramic tile
- Always inspect material prior to installation — installed material cannot be accepted for return or credit
- Always lay out material prior to installation to properly blend and balance color
- Clean with mild, nonabrasive cleanser

COLLECTION

Field	3"x9" (3.000" x 9.000" x 0.350") 9"x9" (9.000" x 9.000" x 0.350")
Material	Ceramic (Stoneware body)
Color	Color palette limited to colors below: Fawn Fossil Indigo Marine Shadow Sunset <i>Custom colors are not available at this time</i>
Lead Time	Lead-time: Stoneware 6-8 weeks <i>(Lead times are subject to change)</i>

*Please note: variations in color, shade, surface texture and size are natural characteristics of all our products and should be expected. Images shown are representative, but may not indicate all variations in these characteristics.

3/2023

MADE Fade by Kelly Wearstler

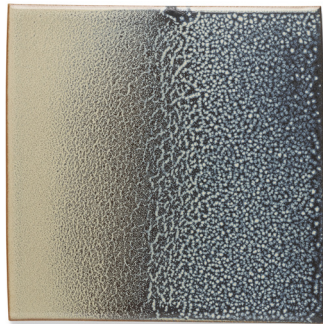
FIELD



9"x9" Fawn



3"x9" Fawn



9"x9" Marine



3"x9" Marine



9"x9" Fossil



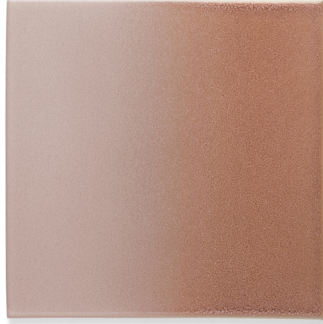
3"x9" Fossil

*Please note: variations in color, shade, surface texture and size are natural characteristics of all our products and should be expected. Images shown are representative, but may not indicate all variations in these characteristics.

3/2023

MADE Fade by Kelly Wearstler

COLOR



9"x9" Sunset



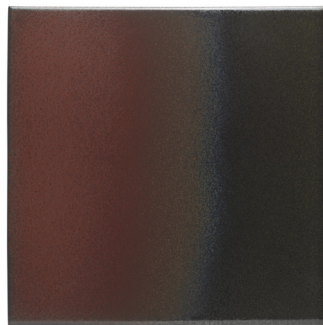
3"x9" Sunset



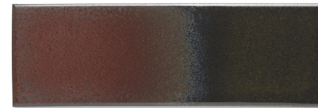
9"x9" Indigo



3"x9" Indigo



9"x9" Shadow



3"x9" Shadow

*Please note: variations in color, shade, surface texture and size are natural characteristics of all our products and should be expected. Images shown are representative, but may not indicate all variations in these characteristics.

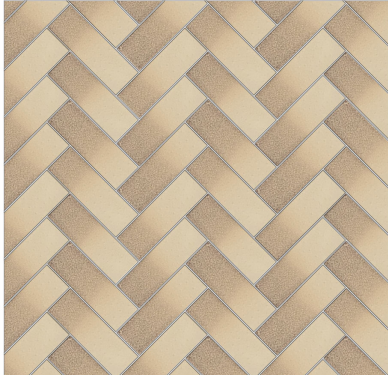
3/2023

MADE Fade

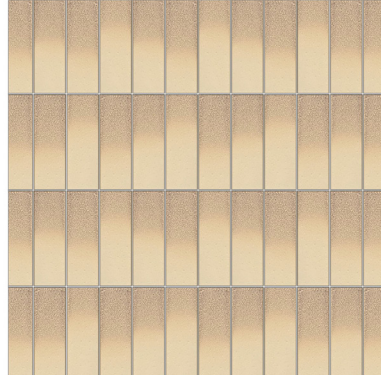
by Kelly Wearstler

PATTERNS

FAWN

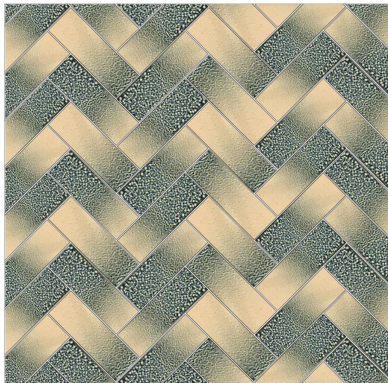


3"x9" Field

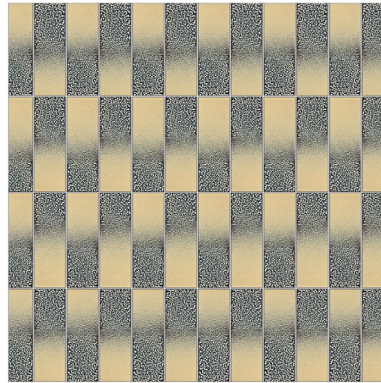


3"x9" Field

MARINE

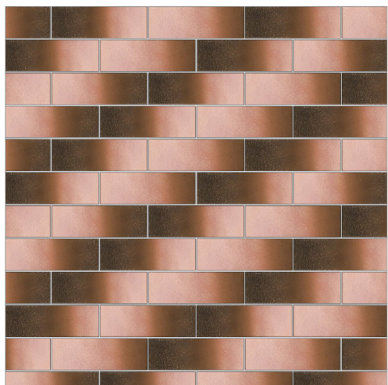


3"x9" Field

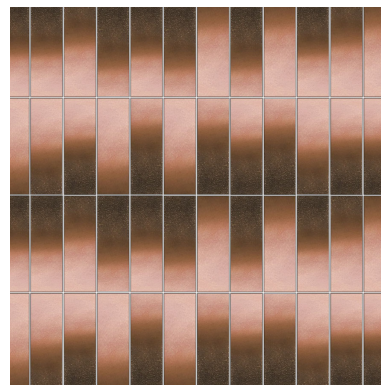


3"x9" Field

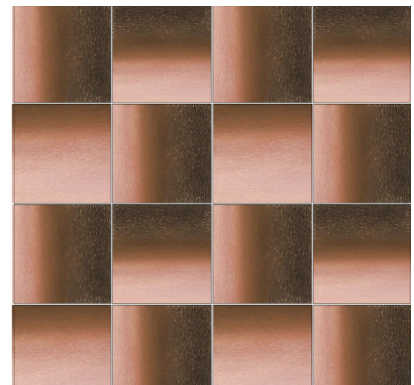
FOSSIL



3"x9" Field



3"x9" Field



9"x9" Field

*Please note: variations in color, shade, surface texture and size are natural characteristics of all our products and should be expected. Images shown are representative, but may not indicate all variations in these characteristics.

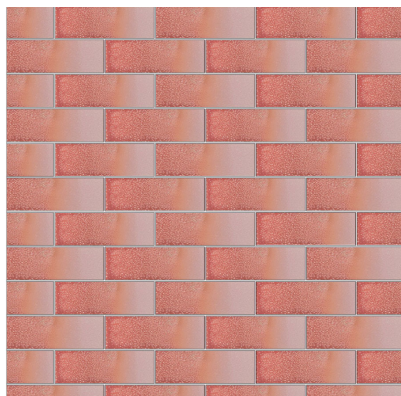
3/2023

MADE Fade

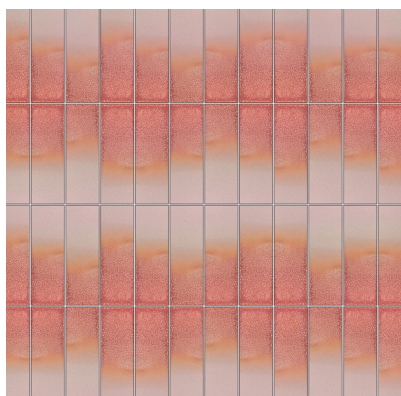
by Kelly Wearstler

PATTERNS

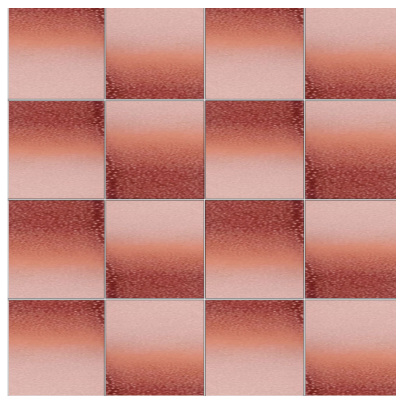
SUNSET



3"x9" Field

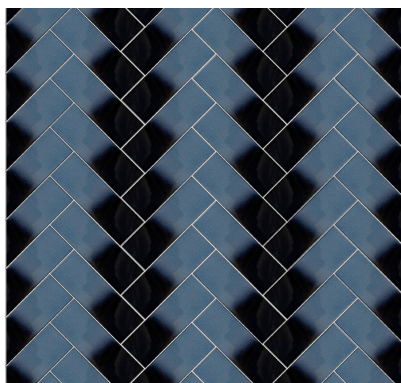


3"x9" Field

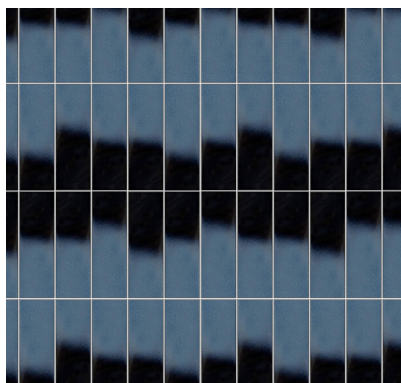


9"x9" Field

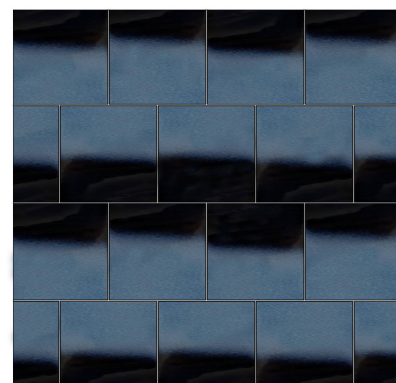
INDIGO



3"x9" Field

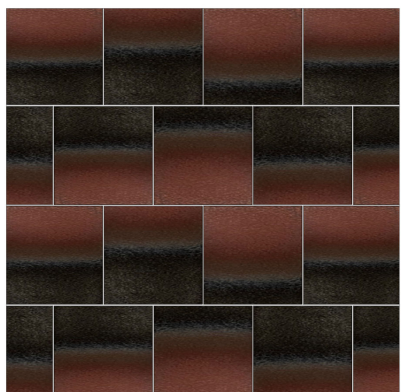


3"x9" Field

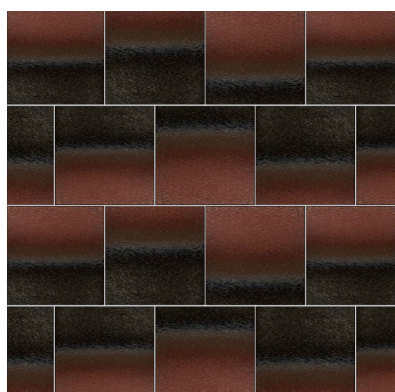


9"x9" Field

SHADOW



3"x9" Field



9"x9" Field

*Please note: variations in color, shade, surface texture and size are natural characteristics of all our products and should be expected. Images shown are representative, but may not indicate all variations in these characteristics.

3/2023