

# Mirror

A new take on porcelain, our Mirror collection makes a stunning feature wall statement. Available in five dazzling jewel tones, this reflective tile is created using the same specialized process that makes premium eyeglasses.



Shown in Gold

## RECOMMENDED USE

- Suitable for indoor wall applications
- Not suitable for floor applications
- Not suitable for outdoor use
- Caution recommended for kitchen or bathroom areas as finish may be affected where acidic substances or cleaners are frequently used
- Mirror finish may show some oxidation over time



wall

## INSTALLATION AND MAINTENANCE

- Install per industry standards for porcelain tile
- Always inspect material prior to installation — installed material cannot be accepted for return or credit
- Use only non-sanded grout as sanded grout may scratch finish
- Do not use epoxy or latex modified grouts as the additives may stain the tile
- Clean with PH neutral mirror or glass cleaners and buff with soft cloth
- Use sharp diamond blades for cutting to avoid chipping finish

## COLLECTION

Field	12"x 24" (11.713" x 23.445" x 0.375")
Material	Color-body Porcelain, reflective mirror finish
Color	Blue, Bronze, Gold, Platinum, Purple
Lead Time	In-stock. Typical lead times are 1-2 weeks (Lead times are subject to change)
Exclusive	Available exclusively at Ann Sacks

\*Please note: variations in color, shade, surface texture and size are natural characteristics of all our products and should be expected. Images shown are representative, but may not indicate all variations in these characteristics.

# Mirror

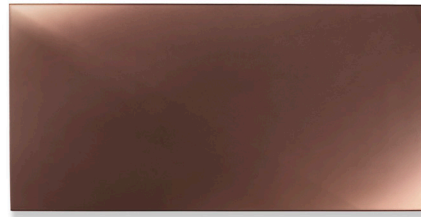
---

## COLOR PALETTE

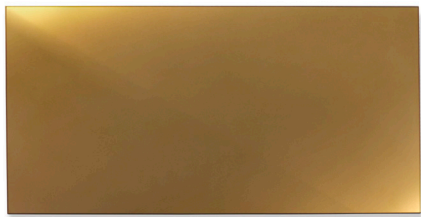
---



Blue



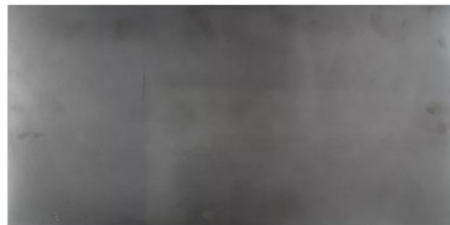
Bronze



Gold



Purple



Platinum

\*Please note: variations in color, shade, surface texture and size are natural characteristics of all our products and should be expected. Images shown are representative, but may not indicate all variations in these characteristics.

7/2024