

# Nottingham

Nottingham is an authentic Craftsman tile defined by a range of beautifully crafted artisan glazes and the truly handcrafted character of the tile. Boasting an extremely hard stoneware clay body and sturdy, interactive glazes, this collection is durable while being beautiful.



## RECOMMENDED USE

- Suitable for indoor wall and light to medium duty flooring (matte glaze for medium use)
- Outdoor use subject to climate and method of installation
- Please see Ann Sacks slip resistance and wet flooring application statement to determine usage in a wet area



## INSTALLATION AND MAINTENANCE

- Install per TCNA handbook for ceramic tile
- Clean with warm, damp cloth only. Do not use chemical cleaners
- Apply penetrating sealer to crackle and metallic glazes

## COLLECTION

<p><b>Designs</b></p>	<p><b>Standard Field:</b>            0.5"x6.00"x0.35", 1.00"x1.00"x0.35", 1.00"x4.00"x0.35",            1.00"x6.00"x0.35", 2.00"x2.00"x0.35", 2.00"x4.00"x0.35",            2.00"x6.00"x0.35", 2.00"x8.00"x0.35", 3.00"x3.00"x0.35",            3.00"x6.00"x0.35", 4.00"x4.00"x0.35", 4.25"x4.25"x0.35",            4.00"x8.00"x0.35", 6.00"x6.00"x0.35", 8.00"x8.00"x0.35"</p> <p><b>Decorative Field:</b>            Cascade, Center Oval, Diamond 1, Diamond 2:            2.938"x5.938"x0.45"            Corner Oval: 2.900"x6.000"x0.438"            Diamond 1, Diamond 2: 4"x12"x0.438"            Half Diamond: 4"x6"x0.438"            Honeycomb: 4x4, 4.25x4.25            Hexagon 2", 4", 6", 8"            Parallelogram 2"x3", 2"x6"            Arabesque 6.125"x6"x0.375"</p> <p><b>DBNs:</b>            2.00"x2.00"x0.35", 2.00"x6.00"x0.35", 2.00"x8.00"x0.35",            3.00"x3.00"x0.35", 3.00"x6.00"x0.35", 4.25"x4.25"x0.35",            4.00"x4.00"x0.35", 4.00"x8.00"x0.35", 6.00"x6.00"x0.35",            8.00"x8.00"x0.35"</p> <p><b>SBNs:</b>            1.00"x1.00"x0.35", 1.00"x4.00"x0.35", 1.00"x6.00"x0.35",            2.00"x2.00"x0.35", 2.00"x6.00"x0.35", 2.00"x8.00"x0.35",            3.00"x3.00"x0.35", 3.00"x6.00"x0.35", 4.25"x4.25"x0.35",            4.00"x4.00"x0.35", 4.00"x8.00"x0.35", 6.00"x6.00"x0.35",            8.00"x8.00"x0.35"</p> <p><b>Moldings</b>            Quarter Round: 1.170"x6.00"x0.500"; Molding D: 0.75"x6.00"            Molding F: 3.25"x6.00"; Molding K: 1.500"x6.00"            Molding L: 2.00"x6.00"; Molding R: 0.75"x6.00"            Molding T: 0.75"x6.00"; Molding W: 0.75"x6.00"</p>
<p><b>Material</b></p>	<p>Ceramic</p>
<p><b>Color</b></p>	<p>25 artisan glazes to choose from  <i>(Please reference color palette and annsacks.com)</i></p>
<p><b>Lead Time</b></p>	<p>Typical Lead Times are 4-6 weeks  <i>(Lead Times are subject to change)</i></p>

\*Please note: variations in color, shade, surface texture and size are natural characteristics of all our products and should be expected. Images shown are representative, but may not indicate all variations in these characteristics.

3/2020

# Nottingham

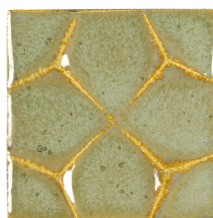
## Decorative Fields:



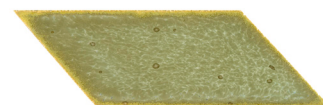
Arabesque  
6.125"x6"x0.375"  
in verdigris copper



Hexagon  
6"  
in verdigris copper  
also available in 2", 4" & 8"



Honeycomb  
4x4  
in verdigris copper  
also available in 4.25" x 4.25"



Parallelogram  
2"x6"  
in verdigris copper  
also available in 2"x6"



Half Diamond  
4"x6"x0.438"  
in veil



Diamond 1  
2.938"x5.938"x0.45"  
in veil  
also available in 4"x12"



Center Oval  
2.938"x5.938"x0.45"  
in veil



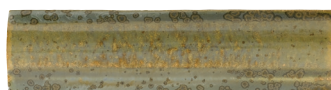
Cascade  
2.938"x5.938"x0.45"  
in peacock

Not Pictured: Corner Oval,  
Diamond 2

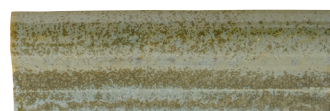
## Moldings



Quarter Round:  
1.170"x6.00"x0.500"  
in verdigris copper



Molding K  
1.500"x6.00"  
in verdigris copper



Molding L  
2.00"x6.00"  
in verdigris copper



Molding R  
0.75"x6.00"  
in verdigris copper



Molding T  
0.75"x6.00"  
in verdigris copper



Molding W  
0.75"x6.00"  
in verdigris copper

Not Pictured: Molding D,  
Molding F

\*Please note: variations in color, shade, surface texture and size are natural characteristics of all our products and should be expected. Images shown are representative, but may not indicate all variations in these characteristics.

3/2020

# Nottingham

---

## Color Palette



Veil  
DW-025



White  
DW-010



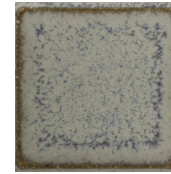
Arctic  
DW-010.2



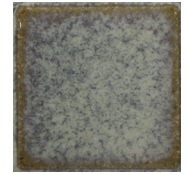
Tundra  
DW-010m



Fog  
DW-221



Ice Cap  
DW-331.5



Glacier  
DW-333



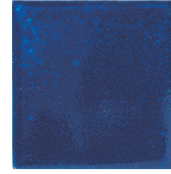
Blue Mist  
DW-332



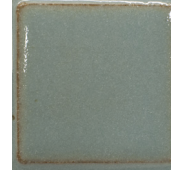
Cornflower  
DW-340



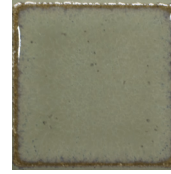
Blue Marine  
DW-370



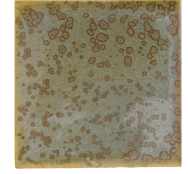
Cobalt  
DW-350



Tiffany  
DW-610



Spring Green  
DW-330.5



Verdigris Cooper  
DW-330



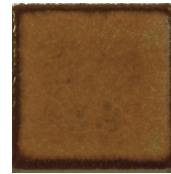
Dune  
DW-130



Gunmetal  
DW-750



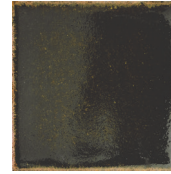
Sandstone  
DW-210m



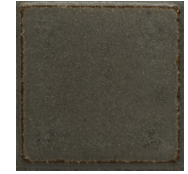
Brick  
DW-220



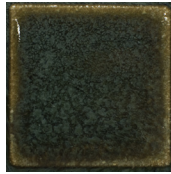
Sedona  
DW-474



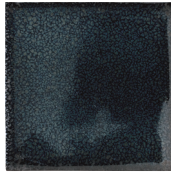
Olive  
DW-420



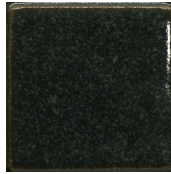
Warm Grey  
DW-221m



Caribbean  
DW-660



Metallic Steel  
DW-740



Peacock  
DW-380



Blackout  
DW-760m