

Savoy Classic

Our Savoy Classic collection is crafted by Japanese artisans, using unique glazes that break over the tile edge, adding a strong design element to any setting. The inventoried collection has an extensive range of field, mosaic and trim formats, offering limitless possibilities at a great value.

RECOMMENDED USE

- Suitable for all indoor wall and medium-duty flooring applications — Bronze glaze suitable for indoor walls and light-duty flooring only
- Circle and Pleated not suitable for flooring applications
- Suitable for installation on shower walls (except Bronze)
- Suitable for submerged areas, such as pools or fountains (except Bronze)
- Outdoor use subject to climate and method of installation
- Material not affected by freeze/thaw conditions
- Suitable for high-temperature areas such as behind ranges and fireplace surrounds or pizza ovens, so long as temperatures do not exceed 500 degrees F
- Bronze NOT recommended for wet areas, since acidic or abrasive cleaners and certain pool chemicals may affect the finish
- Please see Ann Sacks slip-resistance and wet flooring statement to determine usage in a wet area



wall



shower wall



residential floor



freeze/thaw



outdoor

INSTALLATION AND MAINTENANCE

- Install per industry standards for ceramic tile
- Always inspect material prior to installation — installed material cannot be accepted for return or credit
- Always lay out material prior to installation to properly blend and balance color
- It is recommended to seal with a penetrating sealer before and after grouting
- Avoid acidic cleaners or abrasive scouring pads, especially for Bronze glaze
- If used in submerged areas, product must be ordered with paper face mounting *(Minimum orders and additional fees may apply to custom ordered Paper Faced Mosaics)*



Savoy tiles are made from 21% pre-consumer recycled content, including ceramic waste material from discarded clay and smashed tableware. The rest of the tile body is composed of 22% clay and 57% feldspar.



Large Stack Mosaic in Ricepaper

COLLECTION

Field	2"x8" Ribbed (1.850" x 7.756" x 0.335") 3"x6" (2.835" x 5.787" x 0.276") 3"x12" (2.756" x 11.614" x 0.374") 4"x8" (3.875" x 7.756" x 0.276") 4" Hex (4.319" x 3.740" x 0.295") 6"x6" Circle (5.787" x 5.787" x 0.453") 6"x6" Flat (5.787" x 5.787" x 0.335") 6"x6" Pleated (5.787" x 5.787" x 0.453")
Mosaic	Arrowhead (Sheet: 11.772" x 11.890" x 0.276") Herringbone (Sheet: 11.083" x 11.102" x 0.236") Hive (Sheet: 11.472" x 12.614" x 0.236") Offset (Sheet: 11.102" x 11.772" x 0.236") 3/4" Pennies (Sheet: 11.614" x 11.614" x 0.197") Small Stack (Sheet: 11.693" x 11.732" x 0.236") Large Stack (Sheet: 11.811" x 11.811" x 0.276") Swiss Cross (Sheet: 11.575" x 11.575" x 0.236")
Paper Faced Mosaic	Arrowhead (Sheet: 11.772" x 11.890" x 0.276") Herringbone (Sheet: 11.083" x 11.102" x 0.236") Large Stack (Sheet: 11.811" x 11.811" x 0.276") Swiss Cross (Sheet: 11.575" x 11.575" x 0.236")
Trim	1/2"x8" Box Liner (0.512" x 7.756" x 0.394") 1"x8" Quarter Round (0.787" x 7.756" x 0.276") 2"x8" Bullnose SBN (1.850" x 7.756" x 0.276")
Material	Ceramic
Color	Bronze (metallic), Chalk, Cottonwood, Driftwood, Graphite, Lantern, Linen, Lotus, Paperwhite, Ricepaper Paper Faced Cottonwood, Lantern, Lotus, Ricepaper
Lead Time	In-stock. Typical lead times are 1-2 weeks <i>(Lead Times are subject to change)</i>

*Please note: variations in color, shade, surface texture and size are natural characteristics of all our products and should be expected. Images shown are representative, but may not indicate all variations in these characteristics.

5/2023

ANN SACKS

www.annsacks.com | 1.800.278.8453

Savoy Classic

FIELD (Shown in Ricepaper)



2"x8" Ribbed



3"x6"



3"x12"



4"x8"



4" Hex



6"x6" Circle

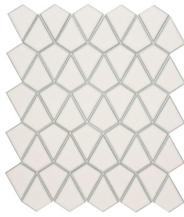


6"x6" Pleated



6"x6" Flat

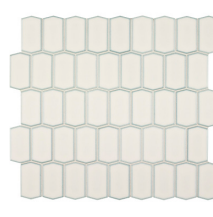
MOSAIC (Shown in Ricepaper)



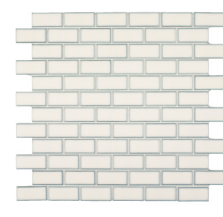
Arrowhead



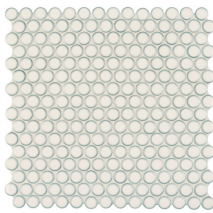
Herringbone



Hive



7/8"x17/8" Offset



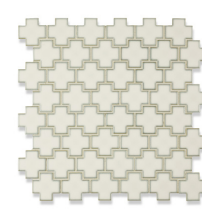
3/4" Pennies



5/8"x17/8" Stack



1"x4" Stack

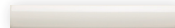


Swiss Cross

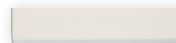
TRIM (Shown in Ricepaper)



1/2"x8" Box Liner



1"x8" Quarter Round



2"x8" Bullnose SBN

Savoy Classic

COLOR (Shown in 6"x6" Circle field)



Paperwhite



Chalk



Ricepaper



Cottonwood



Driftwood



Lotus



Linen



Lantern



Bronze
(metallic)



Graphite

*Please note: variations in color, shade, surface texture and size are natural characteristics of all our products and should be expected. Images shown are representative, but may not indicate all variations in these characteristics.

5/2023

Savoy Prints

Savoy Prints is a stunning graphic addition to the larger Savoy program (Field Tile, Mosaics and Trims) available in three gorgeous colorways: Blue and White, tonal Black and tonal White. Explore unlimited possibilities by combining with Savoy Classic to create custom patterns and color blends for the ultimate in bespoke design expression. Suitable to nearly every design style.



6" x 6" Insho Triangles in Black

RECOMMENDED USE

- Suitable for all indoor wall and light-duty flooring applications
- Suitable for installation on shower walls
- Outdoor use subject to climate and method of installation
- Material not affected by freeze/thaw conditions
- Suitable for high-temperature areas such as fireplaces, behind ranges or pizza ovens as long as temperatures do not exceed 500 degrees F.
- Please see Ann Sacks slip-resistance and wet flooring statement to determine usage in a wet area
- Testing data available upon request



wall



shower wall



residential floor



freeze/thaw



outdoor

COLLECTION

Field	Insho 6" x 6" (5.748" x 5.748" x 0.315")
Design	Circles, Flowers, Lines, Triangles
Material	Ceramic
Color	Black, Blue, White
Lead Time	In-stock. Typical lead times are 1-2 weeks <i>(Lead times are subject to change)</i>

INSTALLATION AND MAINTENANCE

- Install per TCNA Handbook for ceramic tile
- Always inspect material prior to installation — installed material cannot be accepted for return or credit
- Always lay out material prior to installation to properly blend and balance color
- It is recommended to seal with a penetrating sealer before and after grouting



Savoy tiles are made from 21% pre-consumer recycled content, including ceramic waste material from discarded clay and smashed tableware. The rest of the tile body is composed of 22% clay and 57% feldspar.

*Please note: variations in color, shade, surface texture and size are natural characteristics of all our products and should be expected. Images shown are representative, but may not indicate all variations in these characteristics.

5/2023

ANN SACKS

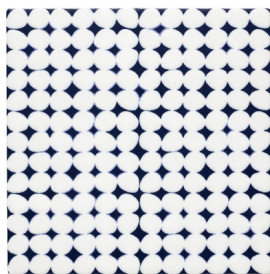
www.annsacks.com | 1.800.278.8453

Savoy Prints

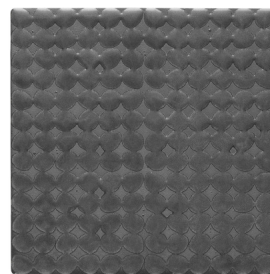
DESIGNS



6"x6" Circles
in White



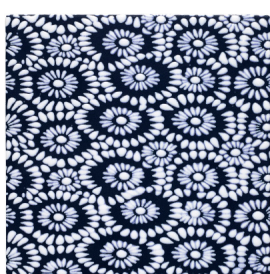
6"x6" Circles
in Blue



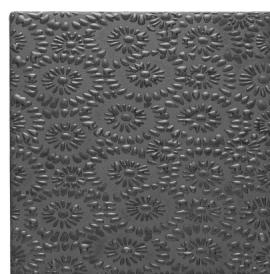
6"x6" Circles
in Black



6"x6" Flowers
in White



6"x6" Flowers
in Blue



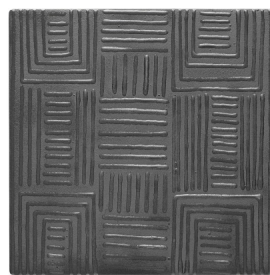
6"x6" Flowers
in Black



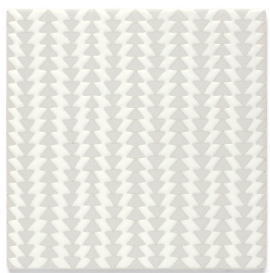
6"x6" Lines
in White



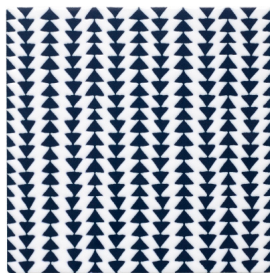
6"x6" Lines
in Blue



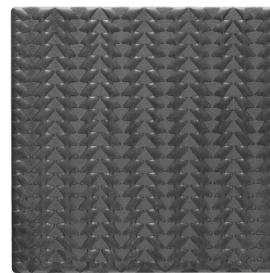
6"x6" Lines
in Black



6"x6" Triangles
in White



6"x6" Triangles
in Blue



6"x6" Triangles
in Black

*Please note: variations in color, shade, surface texture and size are natural characteristics of all our products and should be expected. Images shown are representative, but may not indicate all variations in these characteristics.

5/2023

Savoy Dimensional

Savoy Dimensional is a bold offshoot of the larger Savoy program available in three designs and three artisan glazes. Explore unlimited possibilities by combining with Savoy Classic to create custom patterns and color blends for the ultimate in bespoke design expression. Suitable to nearly every design style.



3"x3" Anna Bevel in Ricepaper

RECOMMENDED USE

- Suitable for all indoor wall applications
- Suitable for installation on shower walls
- Outdoor use subject to climate and method of installation
- Material not affected by freeze/thaw conditions
- Suitable for high-temperature areas such as fireplaces, behind ranges or pizza ovens so long as temperatures do not exceed 500 degrees F.
- Testing data available upon request



wall



shower wall



freeze/thaw

INSTALLATION AND MAINTENANCE

- Install per TCNA Handbook for ceramic tile
- Always inspect material prior to installation — installed material cannot be accepted for return or credit
- Always lay out material prior to installation to properly blend and balance color
- It is recommended to seal with a penetrating sealer before and after grouting



Savoy tiles are made from 21% pre-consumer recycled content, including ceramic waste material from discarded clay and smashed tableware. The rest of the tile body is composed of 22% clay and 57% feldspar.

COLLECTION

Field	Anna Bevel 3"x3" (2.835" x 2.835" x 0.570") 3"x6" (2.835" x 5.787" x 0.570") 4" Hex (4.319" x 3.740" x 0.531")
Material	Ceramic
Color	Cottonwood, Lotus, Ricepaper
Lead Time	In-stock. Typical Lead Times are 1-2 weeks <i>(Lead Times are subject to change)</i>

*Please note: variations in color, shade, surface texture and size are natural characteristics of all our products and should be expected. Images shown are representative, but may not indicate all variations in these characteristics.

7/2020

ANN SACKS

www.annsacks.com | 1.800.278.8453

Savoy Dimensional

FIELD (Shown in Ricepaper)



3"x3"

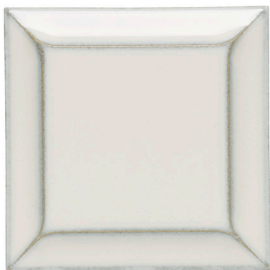


4" Hex

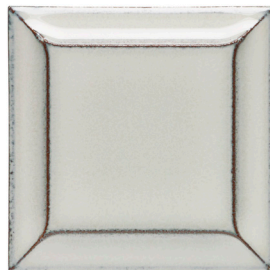


3"x6"

COLOR



Ricepaper



Cottonwood



Lotus

*Please note: variations in color, shade, surface texture and size are natural characteristics of all our products and should be expected. Images shown are representative, but may not indicate all variations in these characteristics.

7/2020