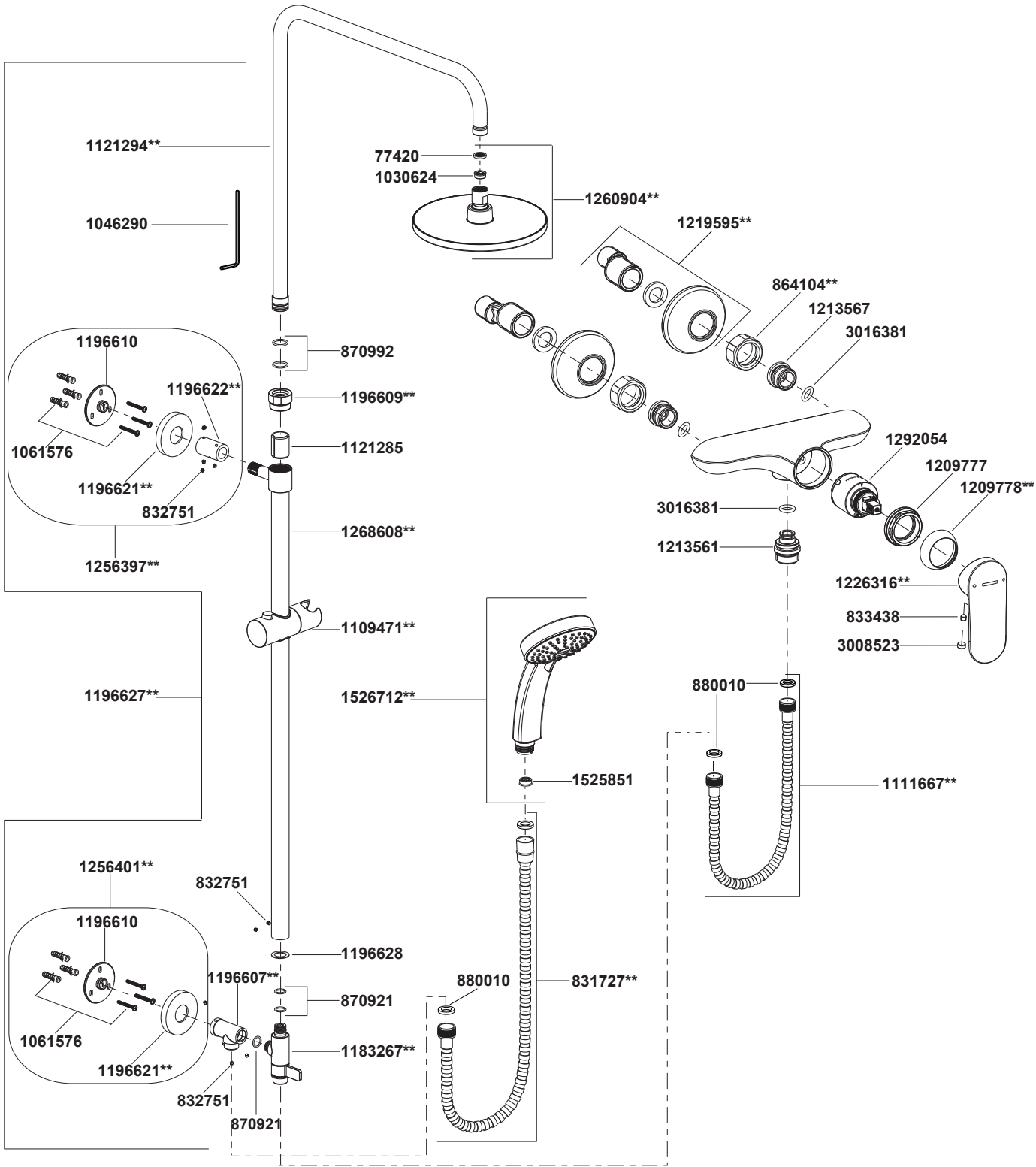


28581T-4 双花洒淋浴柱



**订购时请说明颜色编号
**Color code must be specified when ordering

28581T-4 双花洒淋浴柱

安装之前

所有的资料是按最新发布的产品资料编写而成。科勒公司保留任何时候不经通知即可改变产品特性、包装或产品可供类型的权利。

说明书包括重要的安装、保养及清洁方面的内容，请把这些资料交给用户阅读。

注意事项：

1. 彻底冲洗供水管，以清除管路中杂质。
2. 检查供水管有无损坏和漏水。如需要，进行替换和维修。切断供水管路。
3. 遵守当地管路安装条例。
4. 推荐最小工作压力：0.1MPa(1bar)。

5. 花洒最高工作压力：0.5MPa(5bar)。水压超过0.5MPa(5bar)时必须安装减压阀。花洒最高工作温度及环境温度：60°C。请特别注意花洒同花洒连接的臂管须远离浴霸，否则可能损坏花洒及其密封件，甚至对使用者造成伤害。

BEFORE YOU BEGIN

All information is based on the latest product information available at the time of publication. Kohler Co. reserves the right to make changes in product characteristics, packaging, or availability at any time without notice.

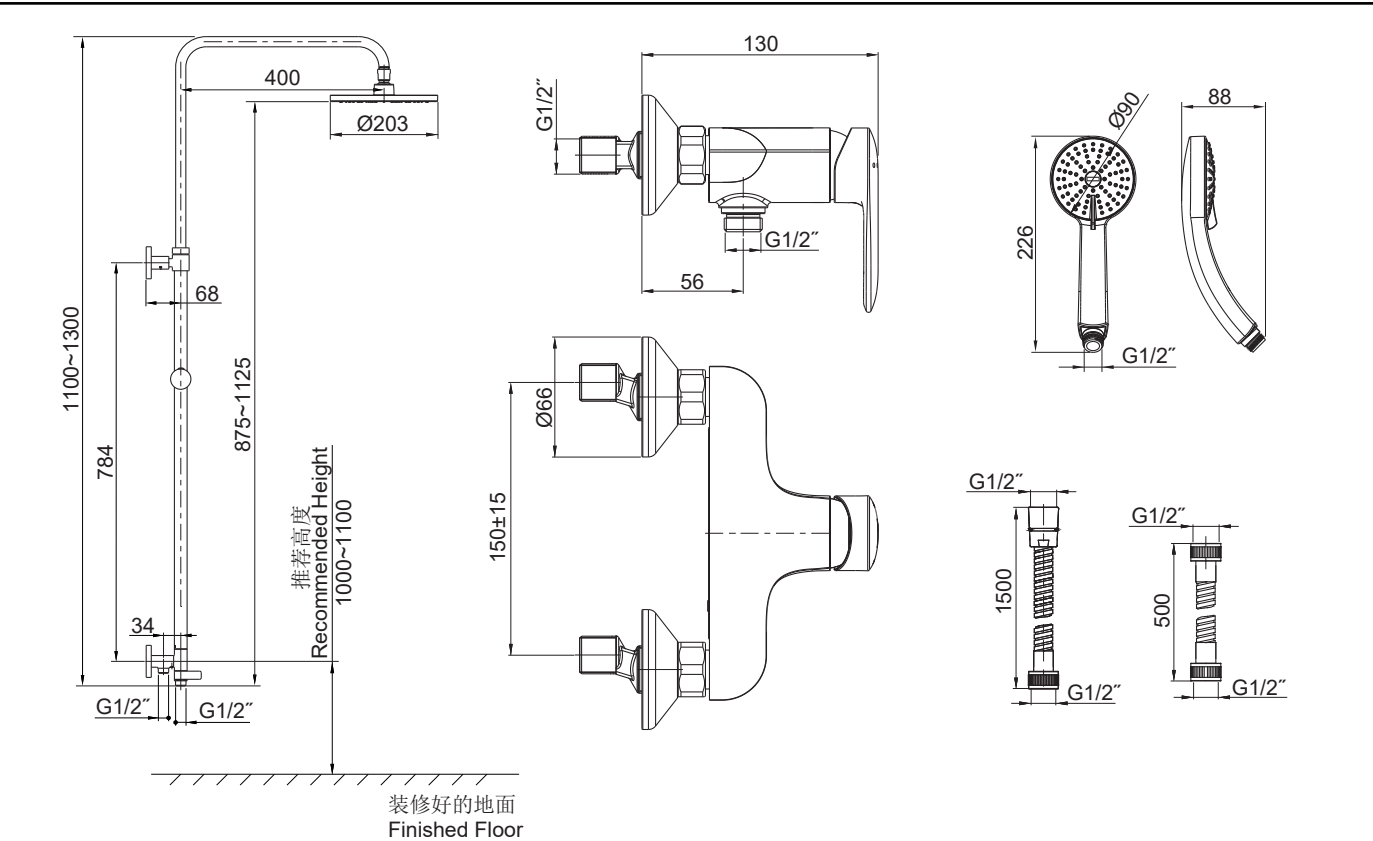
Please leave these instructions for the consumer. They contain important information.

NOTES:

1. Flush the water supply pipes thoroughly to remove debris.
2. Inspect the supply tubing for damage and leakage. Replace and maintain as necessary. Shut off the water supplies to the fitting.
3. Observe local plumbing codes.
4. Recommended minimum working pressures is 0.1MPa(1bar).
5. The highest working pressure for handshower and showerhead is 0.5MPa(5bar). If it exceeds 0.5MPa(5bar), a pressure reducer is needed. The highest water and environment temperature is 60°C. Please keep handshower, showerhead and shower arm away from heater, or it may become damaged and cause injury to the user.

安装尺寸

ROUGH-IN DIMENSIONS



安装步骤	
<h3>如何安装水龙头</h3> <p>为使安装顺利，G1/2"内螺纹管道配件(1)应已安装好。预留150mm的间距，保持水平，管道配件要垂直并不能凸出装修好的墙面。热供水管装在左边。</p> <p>彻底冲洗供水管，以清除管路中的杂质。</p> <p>在两个接头(2)涂上螺纹密封胶或缠绕足以密封的密封胶带，旋入冷热水管中。</p> <p>调节两个接头，使其中心距离为150mm并保持同一水平，凸出墙面29mm。将装饰盖(3)旋入接头，紧贴墙壁。</p> <p>将垫片(4)放入水龙头螺母(5)中，将螺母旋入接头。用带状扳手或用软布垫在普通扳手和螺母之间，锁紧螺母。</p>	
<h3>如何安装淋浴柱</h3> <p>根据安装尺寸，在垂直的墙壁选一合适的位置来安装淋浴柱。根据胀塞(6)的直径和下底座(8-1)的安装位置在垂直墙壁上钻孔(注意：底座上的箭头朝上)。将胀塞塞入孔中，用螺钉(7)固定下底座。</p> <p>试装滑杆组件(9)，以确定上底座(8-2)的安装位置。将连接管(10)套在滑杆组件接头上，并与底座连接(注意：底座上的箭头朝上)。将螺钉(12)装入连接管，并用六角扳手(11)锁紧。</p> <p>将滑杆组件紧贴墙壁放置。连接下底座与切换阀(13)组件并用螺钉固定。调整好滑杆及各组件朝向，用铅笔标记上方底座(8-2)孔位。分别拆下滑杆组件和连接管。(注意：切勿弄丢螺钉。)</p> <p>根据胀塞直径在标记处钻孔。将胀塞塞入孔中，用螺钉固定上底座(8-2)。将连接管(10)装入到底座(8-2)中，锁紧螺钉。将滑杆组件连同装饰罩(14)装在上下底座上。用六角扳手将滑杆与连接管，切换阀与下底座的螺钉旋入，并锁紧。将装饰罩后推与底座旋紧直至接触墙面。</p> <p>将弯管组件(15)装入滑杆组件。用软布垫在螺母(16)的里孔和弯管组件之间，将螺母套入弯管组件。然后用带状扳手或用软布垫在普通扳手和螺母之间，将螺母旋紧到滑杆组件上。</p>	

INSTALLATION	
<h3>How to Install the Faucet</h3> <p>To perform installation, installer must provide G1/2" female supply fittings(1), spaced 150mm apart and horizontally. The supply fittings should be vertical and not beyond the finished wall. Hot supply pipe must be located on the left.</p> <p>Flush the water supply pipes thoroughly to remove any debris.</p> <p>Apply enough tape or suitable sealant on threads of offset connectors(2). Install the two offset connectors into the hot and cold supply pipes.</p> <p>Adjust the center-to-center distance between the connectors to 150mm horizontally. They should extend 29mm beyond the finished wall. Thread the escutcheons(3) onto the connectors until they are against the finished wall.</p> <p>Put the washers(4) into the nuts(5), thread the nuts to the connectors. Tighten the nuts with strap wrench or soft cloth between product and regular wrench.</p>	
<h3>How to Install the Column</h3> <p>Select a location in vertical wall to install shower column according to rough-in dimensions. Drill the lower hole according to anchors'(6) diameter and lower base(8-1) position in the finished wall(NOTE: The arrow in the base is upward). Press anchors into the hole, secure the base by the screw(7).</p> <p>Rehearse the slide bar kit(9) installation for the upper base(8-2) mounting location determination. Slide the tube joint(10) onto the slide bar kit, and connect them to the base(NOTE: The arrow in the base is up). Install the screws(12) into the tube joint with the hex wrench(11), and tighten them.</p> <p>Place the slide bar and the body against the finished wall. Connect the lower base and the diverter body kit(13). Position and tighten them by hex wrench. Mark the hole of upper base(8-2) with a pencil. Uninstall the slide bar kit and tube joint.(NOTE: Don't lose the screws.)</p> <p>Drill holes on the mark. Press the anchors into the holes. Secure the upper base(8-2) by the screws. Install the tube joint(10) to the base(8-2) and tighten them by screws. Reinstall the slide bar kit with escutcheons(14) to the bases. Tighten the screws with the hex wrench. Screw the escutcheons with the bases until against the finished wall.</p> <p>Install the tube kit(15) into the slide bar kit. Install the nut(16) onto the tube kit with soft cloth between internal hole of the nut and the tube kit. Then screw the nut onto the slide bar kit with strap wrench or soft cloth between the nut and regular wrench.</p>	

如何安装手持花洒和软管	
<p>安装手持花洒(26)之前，转动淋浴柱切换手柄(21)，打开水源冲掉杂质。</p> <p>根据需要将限流器(25)塞入手持花洒进水口中。用软管(24)带垫片(22)连接手持花洒与接头(23)。用软管(18)带垫片(17)连接龙头出水口(19)与接头(20)。</p>	
<h3>How to Install the Handshower and Hose</h3> <p>Before installing the handshower(26), turn the diverter handle(21) for handshower, run hot and cold water for about one minute to remove any debris.</p> <p>Put the regulator(25) into the handshower if needed. Connect the hose(24) to the handshower and connector(23) with washers(22). Connect the hose(18) to the faucet outlet(19) and connector(20) with washers(17).</p>	
<h3>如何安装头顶花洒</h3> <p>安装头顶花洒(27)之前，转动淋浴柱切换手柄(21)，打开水源冲掉杂质。</p> <p>取出垫片(29)，根据需要将限流器(28)放入头顶花洒，再装回垫片。将头顶花洒旋到弯管组件出水口上，用带状扳手锁紧。</p>	
<h3>How to Install the Showerhead</h3> <p>Before installing the showerhead(27), turn the diverter handle(21) for showerhead, run hot and cold water for about one minute to remove any debris.</p> <p>Take out the washer(29) and install the regulator(28) into the showerhead if needed, reinstall the washer. Tighten the showerhead onto the tube kit outlet with strap wrench.</p>	

安装结果检查	
<p>检查并确保所有的衔接处都已拧紧，确保手柄处于关闭位置。</p> <p>打开排水系统和主要供水源，检查并修理有漏水的接口。</p> <p>取下连接软管(18)。打开冷热水，让水流约一分钟，以清除杂质。检查渗漏。关闭水龙头，装回软管。</p>	
<h3>INSTALLATION CHECKOUT</h3> <p>Ensure that all connections are tight. Ensure that the handle is in the off position.</p> <p>Turn on the drain and main water supply, and check for leaks. Repair as needed.</p> <p>Remove the hose(18). Run hot and cold water through faucet for about one minute to remove any debris. Shut off the faucet. Reinstall the hose.</p>	

使用说明	
<p>将水龙头手柄轻轻提起，顺时针旋转为热水，逆时针旋转为冷水。</p> <p>逆时针旋转淋浴柱的切换把手，手持花洒出水；顺时针旋转，头顶花洒出水。</p>	
<h3>HANDLE OPERATION</h3> <p>Lift the handle gently. Turn clockwise for hot water, turn counter-clockwise for cold water.</p> <p>Turn the diverter handle counter-clockwise for handspray; Turn clockwise for showerhead.</p>	

清洗说明	
<p>适用于所有加工处理过的表面：以中性肥皂水清洗镀层表面，再以干净的软布彻底擦干整个表面，许多清洁剂，比如氨水、去污粉及洁厕灵等，会对电镀表面造成伤害，切忌使用。</p> <p>有磨损性的清洁用具或清洁剂也不可使用于科勒牌的水龙头及其配件上。</p>	
<h3>CLEANING INSTRUCTIONS</h3> <p>All Finishes: Clean the finish with mild soap and warm water. Wipe entire surface completely dry with clean soft cloth. Many cleaners may contain chemicals, such as ammonia, chlorine, toilet cleaner etc. which could adversely affect the finish and are not recommended for cleaning.</p> <p>Do not use abrasive cleaners or solvents on Kohler faucets and fittings.</p>	