

记录您的型号:

Record your model number: \_\_\_\_\_

**警告: 存在烫伤风险。** 水温过高会导致严重灼伤。将阀芯水温设置为等于或低于 120°F (49°C)。请参阅阀芯的温度调节说明。

**小心: 存在产品损坏和人身伤害风险。** 产品应远离加热器。

请遵守当地管路安装及建筑条例。

**1A.** 6 mm 钻头

**2A.** 将托架底座置于完工墙面, 并确保其垂直。通过钻孔方式安装托架底座时, 托架底座两孔中心距为 13 mm, 标记安装孔位。

**2B.** 托架底座须安装在离地面 600 mm~720 mm 的位置上。

**3A.** (可选) 若通过免打孔粘贴方式安装托架底座, 须先清洁安装墙面。撕开托架底座背面胶贴保护层, 将托架底座用力按压贴到墙上。之后安装橡胶垫。托架底座安装需等待 48 小时后才可以使用其负重。

**4A.** 在标记位置钻 6 mm 的孔。

**6A.** 锁紧螺钉以固定托架。安装橡胶垫。

**7A.** 装软管之前, 先将管道中的杂质冲洗干净。

**9A.** 放水并检查是否漏水。

**11A.** 强劲水流

**11B.** 微气泡水

**11C.** 开/关按钮

**12A.** 冲洗之前, 确保喷枪开关处于关闭位置。定期冲刷喷嘴上的杂质。

**13A.** 定期冲洗滤网垫圈, 去除杂质。

**需要帮助?** 请联系我们的客户服务中心。

• 中国大陆: +(86) 800-820-2628, +(86) 400-820-2628

• 中国香港、中国澳门、中国台湾: +(852) 3125-7728

• **保养和清洁:** [kohler.com.cn/support/care-and-cleaning/](http://kohler.com.cn/support/care-and-cleaning/)

本产品支持科勒®厨卫产品三年有限质保, 详见包装所附的《合格证》。

**WARNING: Risk of scalding.** High water temperature can cause severe burns. Set the valve water temperature at or below 120°F (49°C). Refer to the temperature adjustment instructions for the valve.

**CAUTION: Risk of product damage and personal injury.** Keep the product away from a heater.

Follow all local plumbing and building codes.

**1A.** 6 mm Drill Bit

**2A.** Position the bracket base and verify plumb. For installing the bracket base by drilling, the bracket hole center-to-center distance is 1/2" (13 mm).

**2B.** 23-5/8" (600 mm) - 28-3/8" (720 mm)

**3A.** (Optional) Clean the wall surface. Peel off the sticky back film on the back of the bracket base and press firmly onto the wall. Install the rubber gasket. Wait 48 hours before applying any weight to the bracket base.

**4A.** Drill 1/4" (6 mm) holes at the marked locations.

**6A.** Secure the bracket with screws. Install the rubber gasket.

**7A.** Flush debris before installing the hose.

**9A.** Run water and check for leaks.

**11A.** Focus Strong Spray

**11B.** MicroBubble Spray

**11C.** ON/OFF

**12A.** Verify that the hygiene spray switch is in the OFF position before rinsing. Periodically rinse debris from the nozzles.

**13A.** Periodically rinse debris from the screen washer.

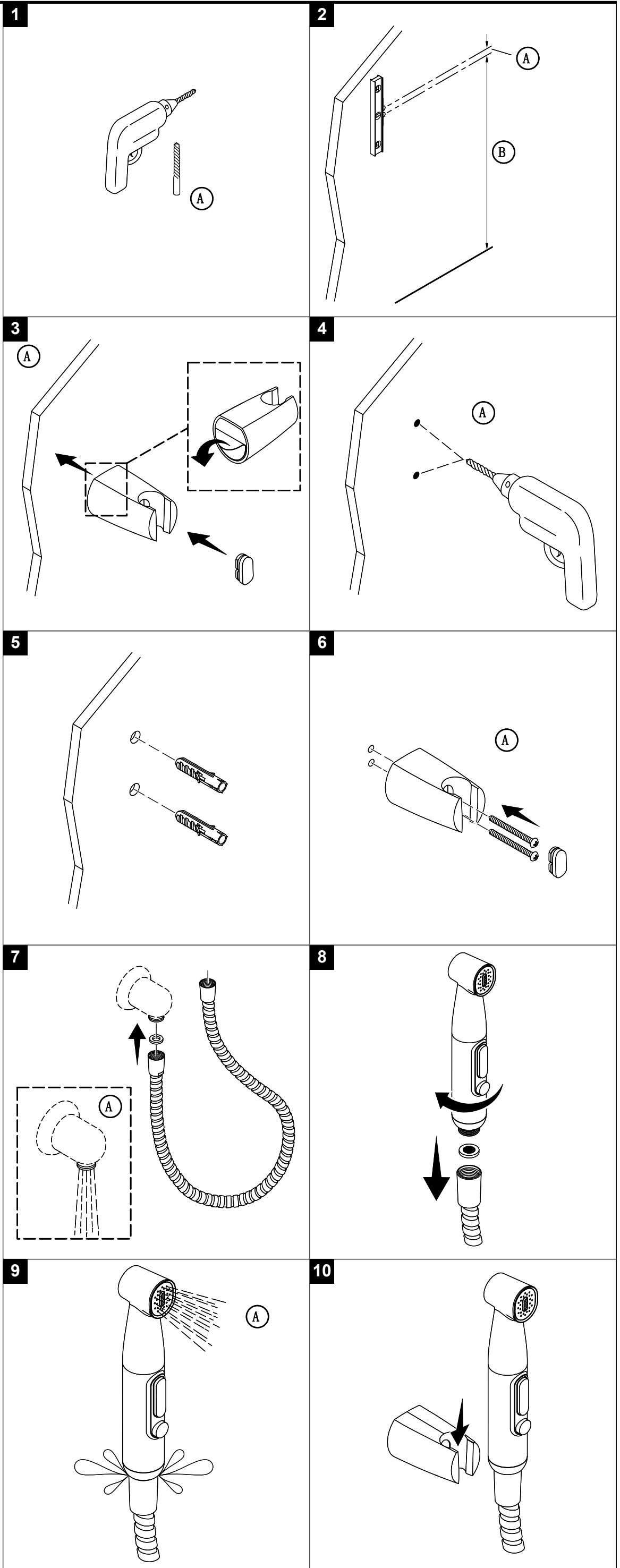
**Need help?** Contact our Customer Care Center.

• Mainland China: +(86) 800-820-2628, +(86) 400-820-2628

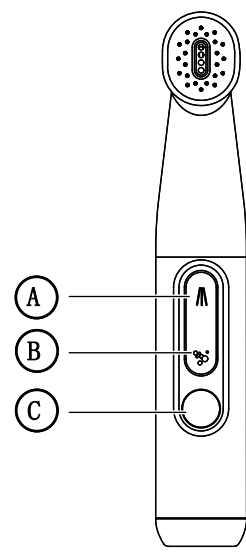
• Hong Kong (China), Macau (China), Taiwan (China): +(852) 3125-7728

• **Care and cleaning:** [kohler.com.cn/support/care-and-cleaning/](http://kohler.com.cn/support/care-and-cleaning/)

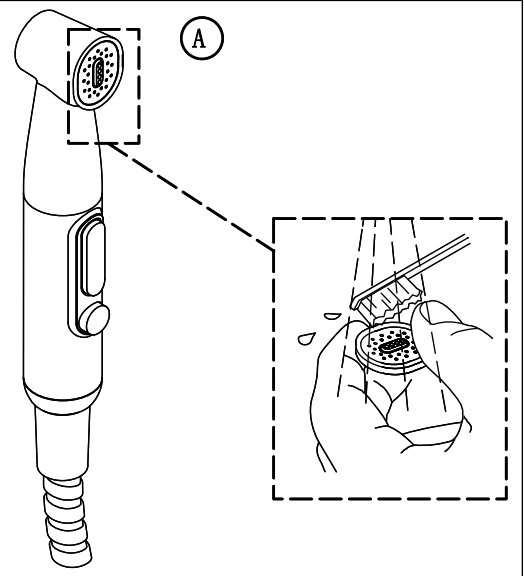
This product is covered under the **Three-Year Limited Warranty for KOHLER® Plumbing Products**, found in the packed Compliance Certification.



11



12



13

