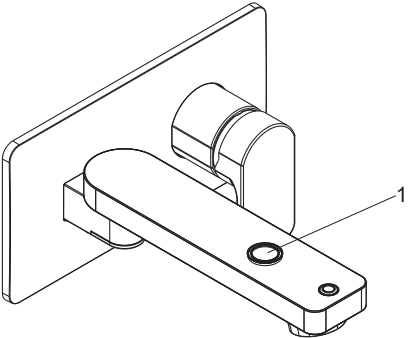
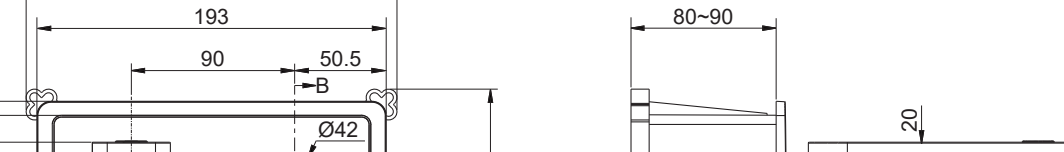
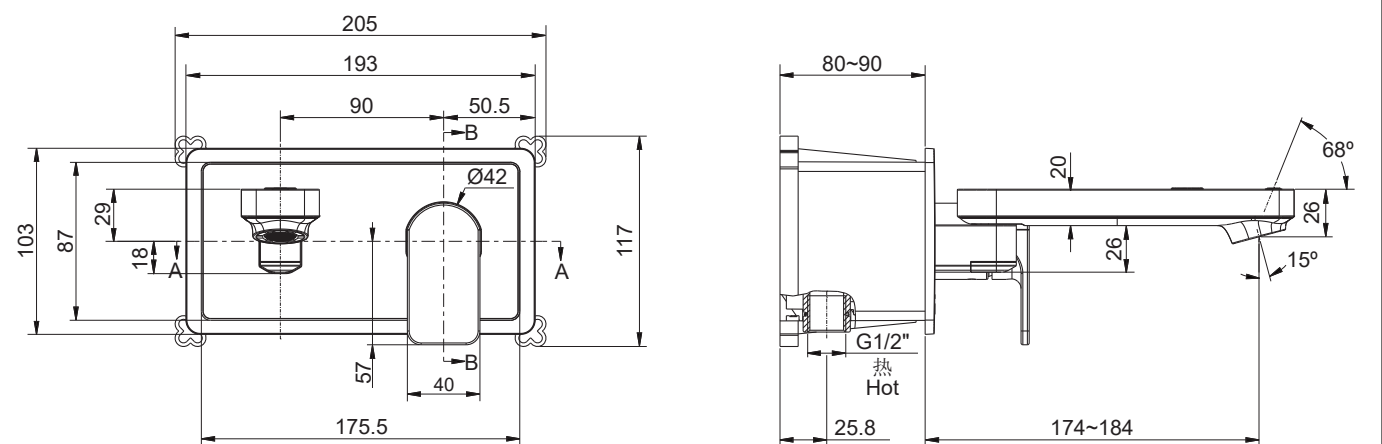
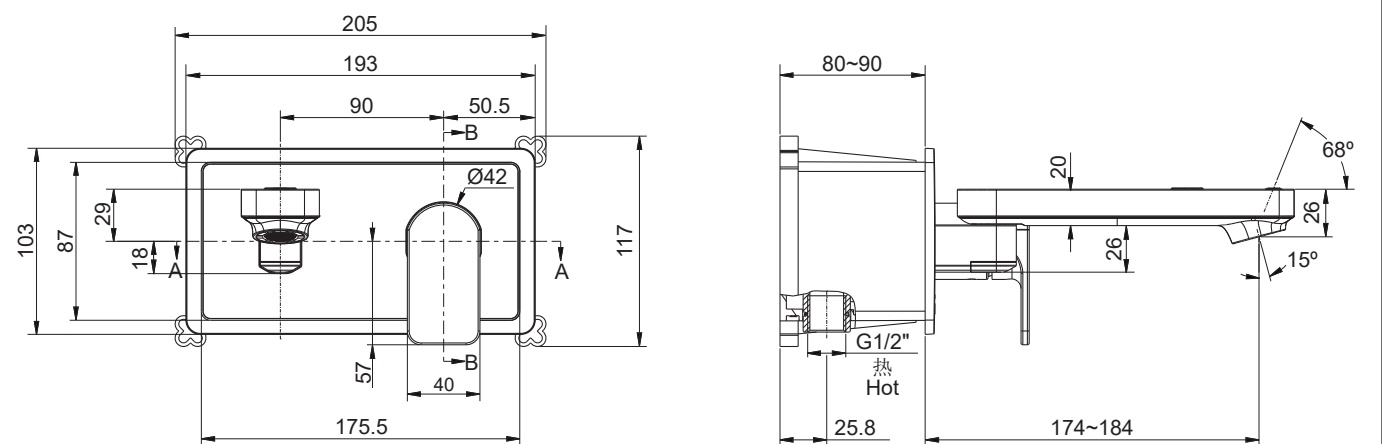


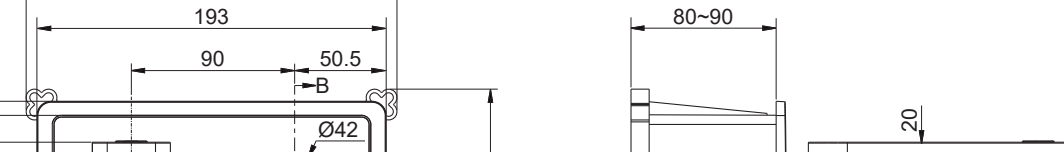
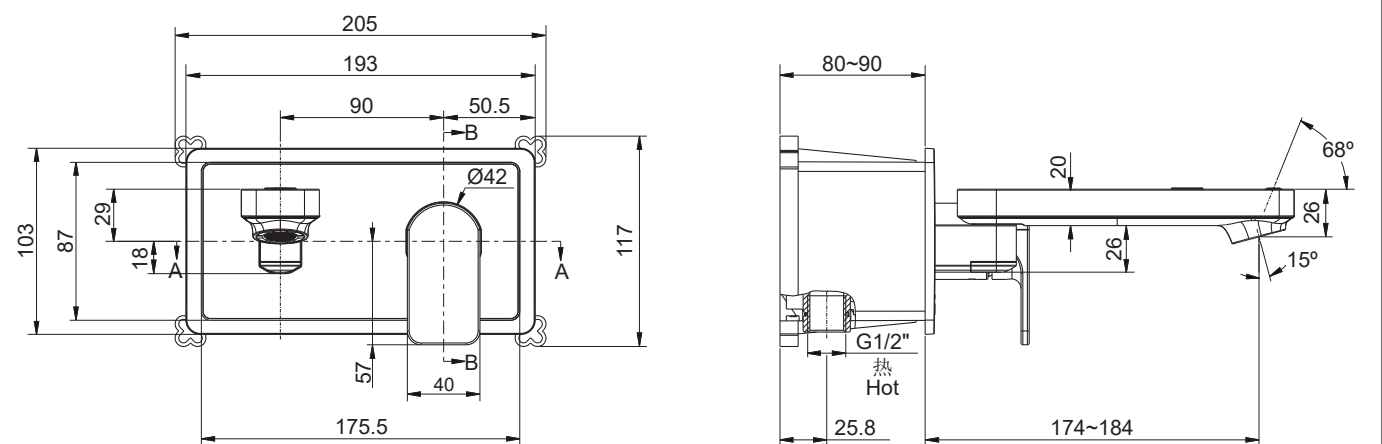
30736T-4 单把墙出水梳洗脸盆龙头	
安装之前	BEFORE YOU BEGIN
<p>所有的资料是按最新出版的产品资料编写而成。科勒公司保留任何时候不经通知即可改变产品特性、包装或产品可供类型的权利。</p> <p>说明书包括重要的安装、保养及清洁方面的内容，请把这些资料交给用户阅读。</p> <p>注意事项：</p> <p>1.一定要先彻底冲洗供水管以清除管道中的杂质。</p> <p>2.检查供水管有无损坏。如需要，进行替换。</p> <p>3.我们建议工作压力：1~4bar。水压超过4bar时须安装减压阀。</p> <p>4.遵守当地管路安装条例。</p> <p>5.埋墙前测试安装连接部位是否有渗漏，根据需要修理之。</p> <p>6.本产品只接受水压测试，且测试前需先排空管路与龙头之间的空气。测试水压不超过0.8MPa，时间不超过30分钟。</p>	<p>All information is based on the latest product information available at the time of publication. Kohler Co. reserves the right to make changes in product characteristics, packaging, or availability at any time without notice.</p> <p>Please leave these instructions for the consumer. They contain important information.</p> <p>NOTES:</p> <p>1. Flush the water supply pipes thoroughly to remove debris.</p> <p>2. Inspect the supply tubing for damage and leakage. Replace and maintain as necessary.</p> <p>3. Recommended working pressure: 1 to 4bar. If it exceeds 4bar, a pressure reducer is needed.</p> <p>4. Observe local plumbing codes.</p> <p>5. Check for leaks before covering the pipes, repair as needed.</p> <p>6. Please ensure only apply water pressure test on the product, and empty the air in pipe and faucet thoroughly before the test. Please ensure test pressure below 0.8MPa and test duration within 30 minutes.</p>
使用说明	OPERATION INSTRUCTIONS
<div></div> <p>轻轻提起把手，顺时针旋转为热水，逆时针旋转为冷水。</p> <p>出水口默认下端出水(气泡水)。出水口上端按钮(1)可实现气泡水和漱口水上下自由切换。</p> <p>出水口可以左右转动，角度见安装尺寸图。</p>	<p>Lift the handle gently. Turn clockwise for hot water, turn counter-clockwise for cold water.</p> <p>Water flows out from the bottom(1) end of the spout as default. The button on the upper end of the spout can switch two different kinds of flow water from up and down.</p> <p>The spout could be rotated horizontally. Please refer to the rough-in dimensions.</p>

安装尺寸 ROUGH-IN DIMENSIONS

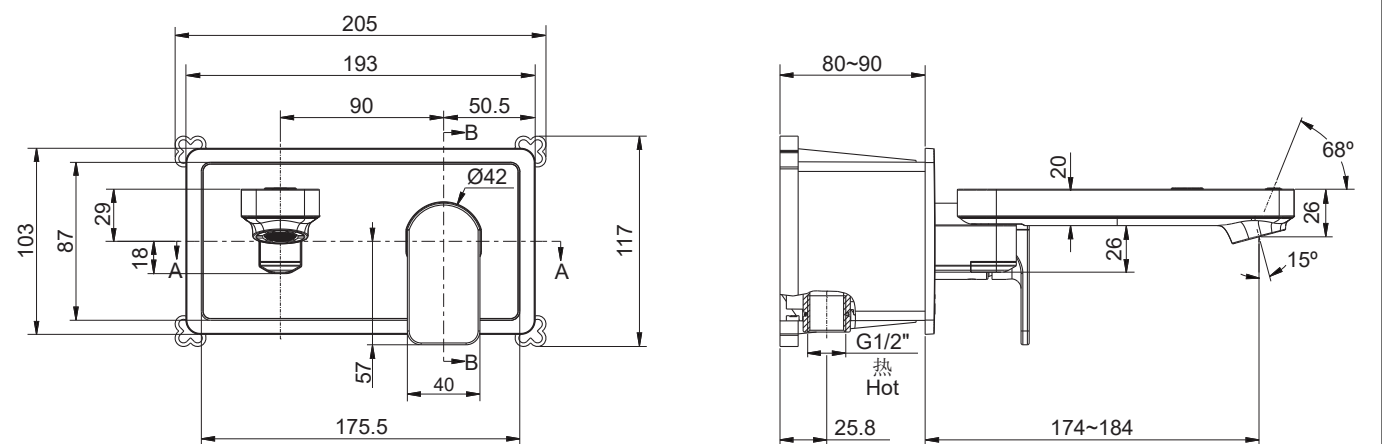
安装尺寸 ROUGH-IN DIMENSIONS



Technical drawings of the 1000 Series 1/2" (25.4mm) Hot Water Valve. The left drawing is a top view showing a rectangular body with a central handle and a side port. Dimensions include overall width 205mm, overall height 117mm, and a central handle diameter of Ø42mm. The right drawing is a side view showing the valve's profile, with a handle length of 80~90mm and a body width of 25.8mm. The valve is labeled "G1/2" 热 Hot".



Technical drawings of the 1000 Series 1/2" (25.4mm) Hot Water Valve. The left drawing is a top view showing a rectangular body with a central handle and a side port. Dimensions include overall width 205mm, overall height 117mm, and a central handle diameter of Ø42mm. The right drawing is a side view showing the valve's profile, with a handle length of 80~90mm and a body width of 25.8mm. The valve is labeled "G1/2" 热 Hot".

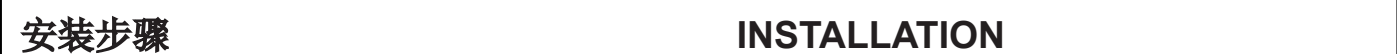


安装步骤 INSTALLATION

安装步骤 INSTALLATION



安装步骤 INSTALLATION



安装步骤 INSTALLATION

安装步骤 INSTALLATION

KOHLER®
SERVICE PARTS
 零件图

若方
PARALLEL
Single Control Wall Mount Lavatory Faucet_A

KOHLER®
SERVICE PARTS
 零件图

若方
PARALLEL
Single Control Wall Mount Lavatory Faucet_A

KOHLER®
SERVICE PARTS
 零件图

若方
PARALLEL
Single Control Wall Mount Lavatory Faucet_A

KOHLER®
SERVICE PARTS
 零件图

若方
PARALLEL
Single Control Wall Mount Lavatory Faucet_A

KOHLER®
SERVICE PARTS
 零件图

若方
PARALLEL
Single Control Wall Mount Lavatory Faucet_A

KOHLER®
SERVICE PARTS
 零件图

若方
PARALLEL
Single Control Wall Mount Lavatory Faucet_A



KOHLER®
SERVICE PARTS
 零件图

若方
PARALLEL
Single Control Wall Mount Lavatory Faucet_A

KOHLER®
SERVICE PARTS
 零件图

若方
PARALLEL
Single Control Wall Mount Lavatory Faucet_A

KOHLER®
SERVICE PARTS
 零件图

若方
PARALLEL
Single Control Wall Mount Lavatory Faucet_A

KOHLER®
SERVICE PARTS
 零件图

若方
PARALLEL
Single Control Wall Mount Lavatory Faucet_A

清洗说明

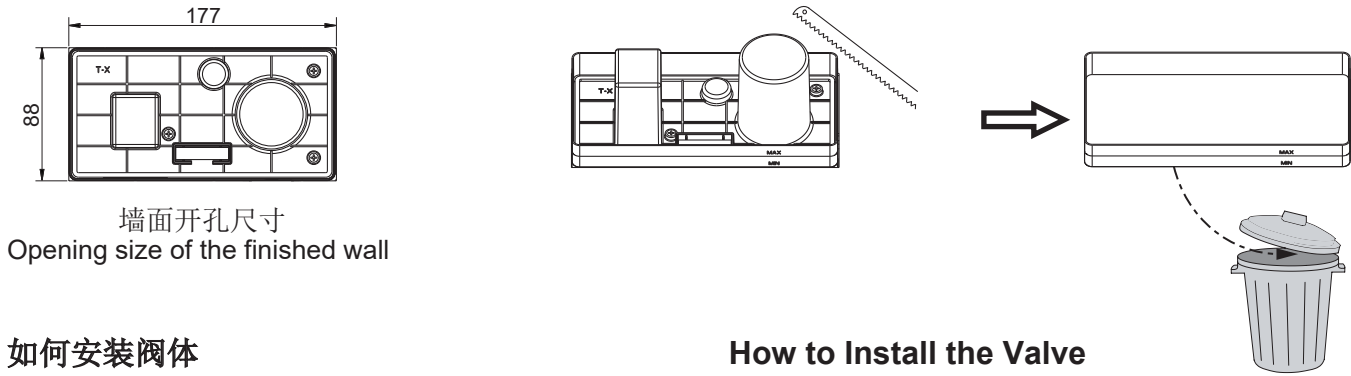
适用于所有加工处理过的表面：以中性肥皂水清洗镀层表面，再以干净的软布彻底擦干整个表面，许多清洁剂，比如氨水、去污粉及洁厕灵等，会对电镀表面造成伤害，切忌使用。

有磨损性的清洁用具或清洁剂也不可使用于科勒牌的水龙头及其配件上。

CLEANING INSTRUCTIONS

All Finishes: Clean the finish with mild soap and warm water. Wipe entire surface completely dry with clean soft cloth. Many cleaners may contain chemicals, such as ammonia, chlorine, toilet cleaner etc. which could adversely affect the finish and are not recommended for cleaning.

Do not use abrasive cleaners or solvents on Kohler faucets and fittings.



如何安装阀体

一定要先彻底冲洗供水管以清除管道中的杂质。关闭水源。

选择合适的高度安装阀体。

安装过程中确保阀体朝向正确，为了保护阀体，保护套需留在阀体上。

墙体开孔尺寸见第二页。**注意：**安装时用附带的气泡水平仪来保证阀体水平，并与墙面垂直。

确保所有衔接螺母都已锁紧。确保阀体处于关闭的位置。开启冷热水源，检查是否有漏水。如漏水，修理之。

用水泥填充周围墙体，铺贴最终墙面时，确保保护套和墙面之间的缝隙不大于5mm。待最终墙面处理完成后，在保护套与墙面空隙处涂上玻璃胶。

锯掉保护套外圈剩余的部分。

How to Install the Valve

Flush the water supply pipes thoroughly to remove debris before installation. Shut off the main water supply.

Determine a suitable location on the wall to install the valve body.

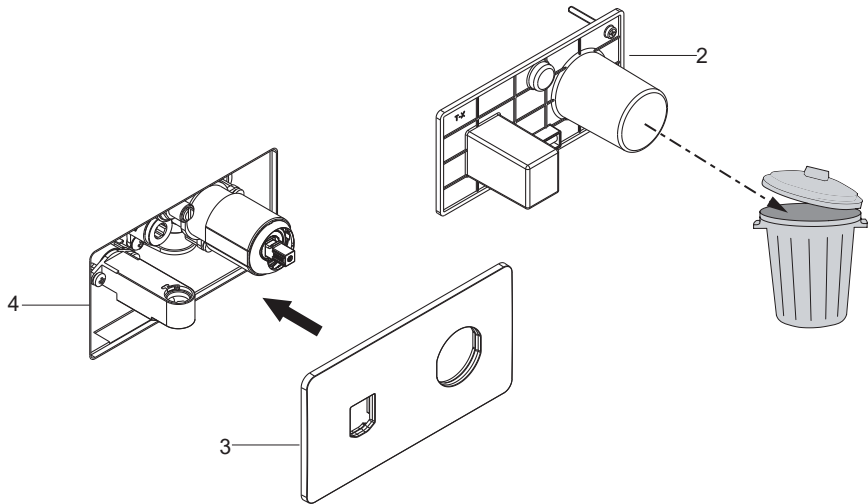
Be sure the valve body is in correct direction. During installation, keep valve guard on valve body.

The hole size of the wall is shown in page 2. **NOTE:** Ensure the valve is horizontal by the attached bubble level, and perpendicular to the wall.

Ensure that all coupling nuts are tight. Ensure that the handle is in the off position. Turn on the main water supply, and check for leaks. Repair as needed.

Apply cement around the mounting box kit. When the finished wall is completed, make sure the gap between the valve guard and the finished wall should be not more than 5mm. Apply silicon sealant to the gap.

Cut the rest of the valve guard.



如何安装面板

卸下固定螺钉，摘掉保护套(2)。

安装面板(3)，将其固定到阀体(4)上并贴紧墙面。

How to Install the Plate

Uninstall the screws, and then remove the guard(2).

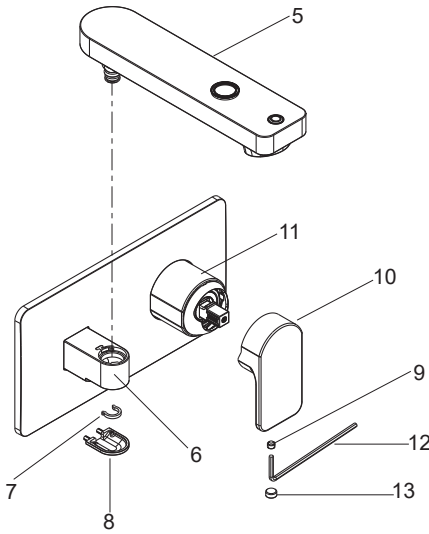
Install the plate(3) to the valve body(4) until it is against the wall.

如何安装出水口和把手

将出水口(5)接头插入支座(6)孔中，接着用卡环(7)固定，然后装上装饰盖(8)。

预装螺钉(9)到把手(10)上，接着将把手安装到阀芯(11)上。

用六角扳手(12)拧紧螺钉以固定把手，塞入塞扣(13)。



How to Install the Spout and Handle

Install the spout(5) into the holder(6), fix it with block(7), and then insert the escutcheon(8).

Pre-screw the screw(9) into the handle(10). Install the handle onto the valve(11).

Tighten the screw to scure the handle with the hex wrench(12), and then insert the plug(13).

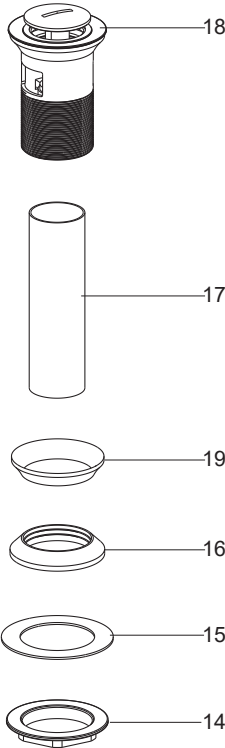
如何安装排水器

把锁紧螺母(14)、塑料垫片(15)、橡胶垫圈(16)和尾管(17)从排水本体上依次取下。在尾管螺纹处须缠绕足以密封的密封胶带或涂合适的密封胶，装回排水本体。

把排水本体从脸盆上部孔插入。再依次将橡胶垫圈(小面朝上)、塑料垫片和锁紧螺母从排水本体底部装入。将锁紧螺母锁紧。

注意：在锁紧螺母拧紧后，不可调整排水本体的位置，否则会破坏油灰密封或密封剂密封。

注意：如果需要，可直接在排水器盘片(18)底面沿周围涂一圈密封油灰或其他密封剂，而不使用橡胶垫片(19)。



How to Install the Drain

Remove the locknut(14), plastic washer(15), rubber gasket(16) and tailpiece(17) from the drain body. Supply enough tape or sealant to tailpiece thread. Reinstall the tailpiece.

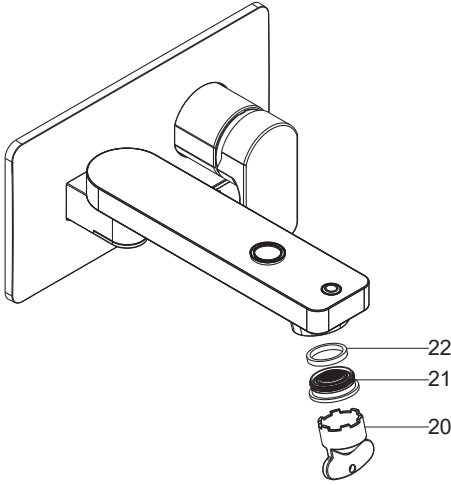
Insert the drain body into the lavatory. Put the rubber gasket(Tapered side up), plastic washer and locknut back to the drain body in turn. Tighten the locknut.

NOTE: Do not reposition the drain after the locknut is tightened, or you may break the putty or sealant seal.

NOTE: If needed, apply a ring of plumbers putty or other sealants around the underside of the drain flange(18), instead of using rubber washer(19).

安装结果检查

INSTALLATION CHECKOUT

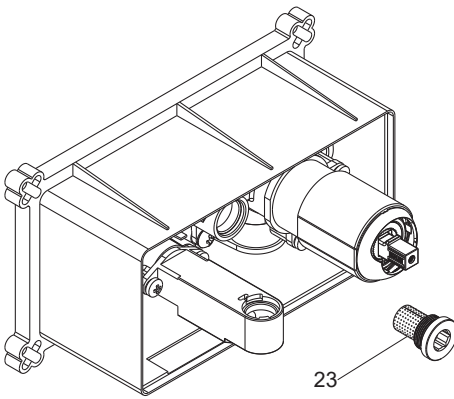


检查并确保所有衔接螺母都已拧紧，确保把手在关闭位置。打开排水器和主要供水源，检查是否有漏水。如有漏水，修理之。

用工具(20)拆下起泡器(21)，取出垫片(22)。打开水龙头冷热水，让水流出约一分钟以清除杂质，检查渗漏。冲洗起泡器和垫片，关闭水龙头，重新装回垫片和起泡器。

Ensure all connections are tight. Ensure the handle is in the off position. Turn on the drain and main water supply, and check for leaks. Repair as needed.

Remove the aerator(21) with the tool(20). Remove the washer(22). Turn on the faucet. Run hot and cold water through the spout for about one minute to remove any debris. Check for leaks. Remove any debris from the aerator and washer. Shut off the faucet. Reinstall the aerator and washer.



如何清洗滤网

滤网(23)可起到保护龙头的作用，但长时间使用后，水垢或杂质可能会堵塞滤网，降低水流量。

用六角扳手逆时针旋松滤网，清洗后重新装回。

How to Clear the Filter

The filter(23) can protect the faucet, but it may get obstructed and reduce water flow after a long time of use.

Turn counter-clockwise to uninstall the filter with hex wrench. Reinstall it after cleaning.