

BEFORE YOU BEGIN

- Please read these instructions carefully to familiarize yourself with the required tools, materials, and installation sequences. Follow the sections that pertain to your particular installation. This will help you avoid costly mistakes. In addition to proper installation, read all operating and safety instructions.
- All information in these instructions is based upon the latest product information available at the time of publication. Kohler China reserves the right to make changes in product characteristics, packaging, or availability at any time without notice.
- These instructions contain important care, cleaning, and warranty information - **please leave instructions for the consumer.**
- This product complies with GB 4706.1 and GB 4706.15.

安装之前

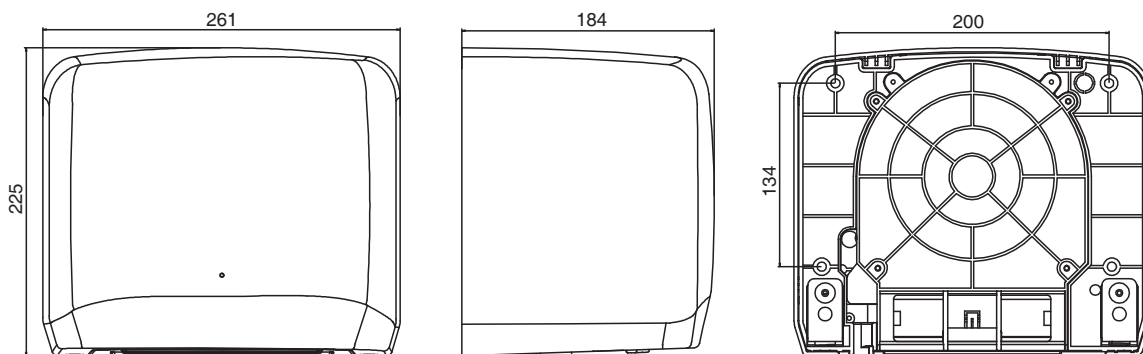
- 请小心详阅本指引。以便熟悉所需工具、材料及安装程序。请遵照适用的章节来安装你的产品，以避免由于安装不当而导致不必要的损失。除了有关正确的安装方法之外，还务请详阅所有操作及安全指引。
- 本指引所载之一切材料，均以印刷时所有之最新产品情况为基础。科勒中国保留权利随时更改产品特性、包装或供应情况，恕不另行通知。
- 本指引也包含了有关护理、清洁及保养等重要资料-请交予用户留存。
- 本产品符合GB 4706.1 和GB 4706.15。

SPECIFICATIONS

Activation	Activated by an infrared sensor. The machine operates automatically.	
Dimensions W × H × D	262 × 225 × 184mm	
Voltage	220V, 50Hz	
Power	Warm Air	1750W
	Cold Air	550W
Detection Distance	30 ± 4cm for A4 white paper	
Air Temperature	35~40°C 10cm from air outlet Ambient temperature 25°C(77°F)	
Operation Duration	45 sec (Self-protection automatic shutoff)	
Motor Type	Induction with brush	
Air Velocity	AC 220V 50Hz 105m/s ± 10% AC 220V 60Hz 110m/s ± 10%	

规格说明

启动方式	红外线感应自动开放、关闭	
外型尺寸 W × H × D	262 × 225 × 184mm	
电压	220V, 50Hz	
功率	热风	1750W
	冷风	550W
感应距离	出厂设定30 ± 4cm	
热风温度	离出风口距离10cm处35~40°C 室温25°C (77°F) 时，测量值。	
自保时间	45秒 (最高连续启动时间后，自动切断电源)	
马达型式	有刷感应式	
风速	AC 220V 50Hz 105m/s ± 10% AC 220V 60Hz 110m/s ± 10%	



KOHLER CHINA INVESTMENT CO., LTD NO.158, JIANG CHANG SAN ROAD,
JING'AN DISTRICT, SHANGHAI, PRC POST CODE: 200436
科勒(中国)投资有限公司 上海市静安区江场三路158号 邮编: 200436

- This machine is equipped with an infrared sensor for automatic activation.
- The product is made in China.

⚠ WARNING: Risk of electrical shock. A licensed electrician should make all electrical connections.

⚠ WARNING: Risk of electrical shock. Connect only to a circuit protected by a Ground-Fault Circuit-Interrupter (GFCI) or Earth-Leakage Circuit-Breaker (ELCB).

⚠ WARNING: Risk of electrical shock. Disconnect power before servicing.

⚠ WARNING: Danger of electric shock. Do not open the casing.

⚠ WARNING: Danger of electric shock. Do not use the device at damper places such as the shower room.

⚠ WARNING: Do not transform or disassemble the device to avoid fire or electric shock.

⚠ WARNING: Use rated voltage. The device will break down if the rated voltage exceeds $\pm 10\%$ and may cause fire or electric shock.

⚠ WARNING: Use separated circuit to avoid fire caused by over heating of the shunt circuit.

⚠ WARNING: To avoid danger, the damaged wire must be replaced by manufacture or other professionals.

⚠ WARNING: Do not let children play on the device to avoid the device from dropping down.

⚠ WARNING: Do not place other items on the device.

- 本产品为红外线感应式自动干手机。

- 本产品为中国大陆制造。

⚠ 警告：有触电的危险。 请找合格的电工来进行所有的线路连接。

⚠ 警告：有触电的危险。 仅能和由接地故障短路器 (GFCI) 或漏电短路器 (ELCB) 保护的电路连接。

⚠ 警告：有触电的危险。 工作之前先切断电源。

⚠ 警告：有触电的危险。 不要打开外壳。

⚠ 警告：有触电的危险。 不要在浴室等直接淋水的地方或容易结露的场所使用。

⚠ 警告： 不要自行改造或分解，否则可能会引起火灾，触电。

⚠ 警告： 请使用额定电压，如果超过额定电压 $\pm 10\%$ ，机器将会发生故障，可能会引起火灾、触电事故。

⚠ 警告： 请使用固定线路，如与其他电器并用，则有可能引起分路插座异常发热并导致起火。

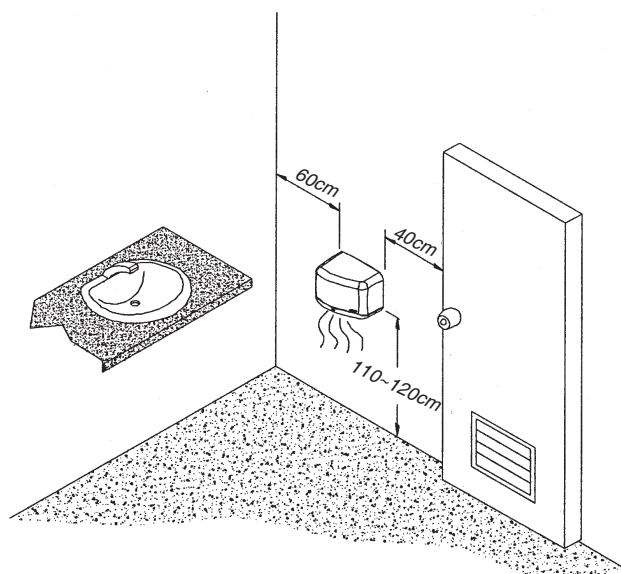
⚠ 警告： 如果电源软线损坏，为了避免危险，必须由制造商、其维修部或类似部门的专业人员更换。

⚠ 警告： 不要让小孩挂在机器上玩耍，否则机器有掉落危险。

⚠ 警告： 不要在机器上放置其他物品。

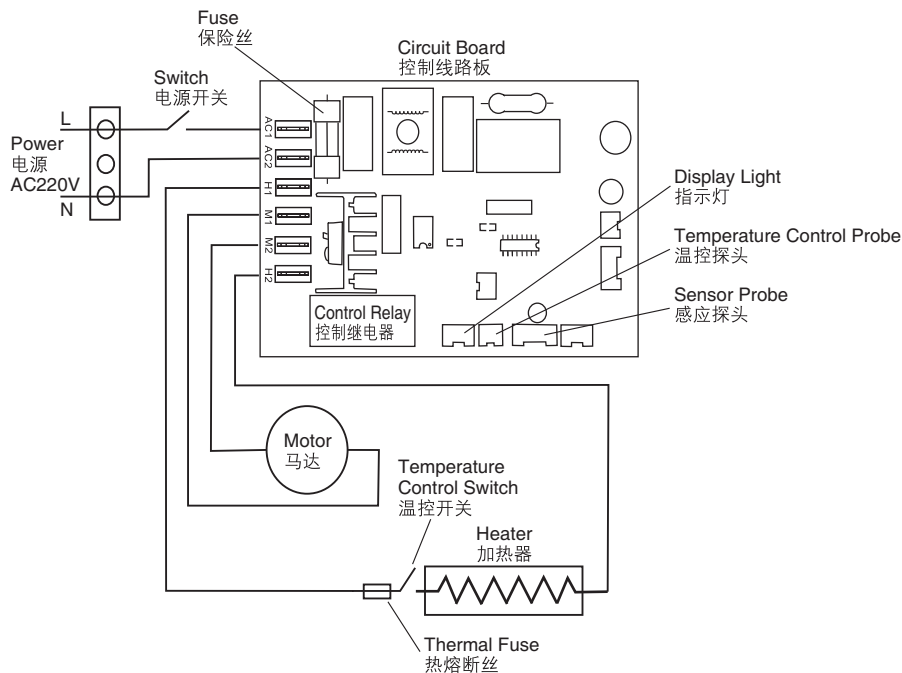
STANDARD INSTALLATION

安装示意图



OPERATION DIAGRAM

电路图



TROUBLESHOOTING

故障排除

Problem	Check	Action
Hand dryer does not function	Check the power switch.	Turn on power.
	Sensor wire is loose.	Connect wire.
	Sensor is damaged.	Contact professionals.
Motor does not function	Motor is damaged.	
	Wind wheel is stuck.	
No warm air	PTC heating assembly is damaged.	Heating is automatically shut off when ambient temperature exceeds 25°C.
	Check whether ambient temperature exceeds 25°C.	

问题	判断分析	解决方法
干手器不动作	检查电源开关	打开电源
	感应装置导线松脱	接上导线
	感应装置损坏	通知本公司专业人员维修
马达不动作	马达损坏	
	风轮内有异物	
无暖风	PTC电热组件损坏	环境温度超过25°C时，加热自动关闭
	环境室温是否超过25°C	

Note: The device must be repaired by professionals. Repair without technical assistance may damage the parts or cause personal injury.

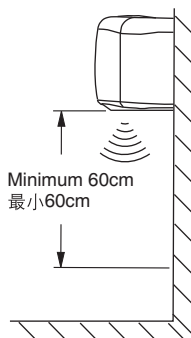
注意：本产品需由本公司专业人员维修，用户在没有任何技术协助下修理机器，易导致零件损坏或人身伤害。

BEFORE INSTALLATION

安装之前

NOTE

1. Make sure the sensor is located min 60cm(23 inch) above everything below to prevent false triggers.
2. Never install hand dryer onto a wooden or plastic wall finish.
3. Before installation, make sure the power source complies with specification of the machine.



注意

1. 安装前，请确定感应器下方60cm内无任何障碍物，以确保本机不会误动作。
2. 请勿在木板或塑胶墙上安装此干手机。
3. 安装前请先确定所提供的电源与此干手机规格相符合。

INSTALLATION

安装

A. Installation Steps

A. 安装步骤

1. Paste the installation template at appropriate location on the wall.

1. 将安装模板贴在墙上适当位置。

2. Drill four holes, dia 8mm insert plastic dowels. (Fig.1)

2. 使用8mm钻头在指定位置上钻洞，将膨胀螺丝套插入所钻的孔中。(图1)

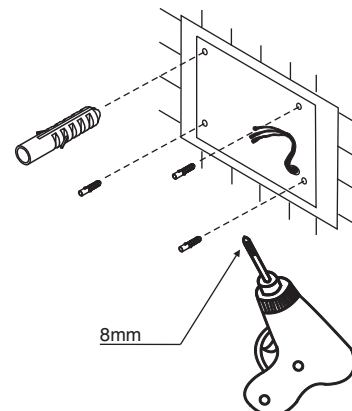


Fig.1
图1

3. Insert screws into dowels and tighten them. (Fig.2)

3. 螺丝插入孔中并锁紧。(图2)

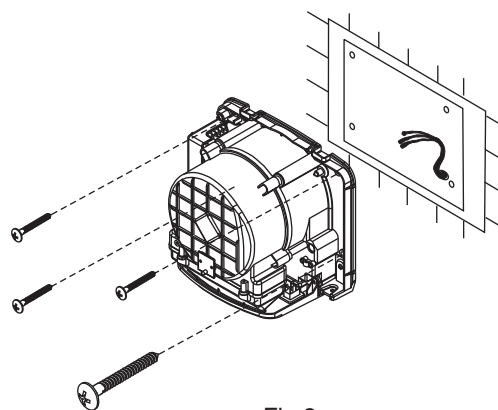


Fig.2
图2

4. Connect AC power cable (Fig.3). The cable can be hidden.

4. 连接交流电源(图3)。可隐藏导线。

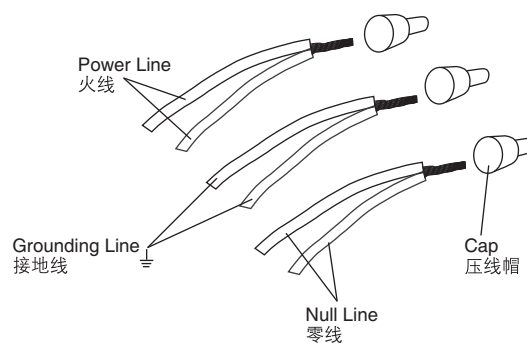


Fig.3
图3

B. Installation Check

1. Check AC power cable connection.
2. Check if AC power on.
3. Put outer cover back.
4. Insert security screws and tighten them.(Fig.4)

B. 安装检查

1. 检查电源线接头是否接受。
2. 检查电源开关是否已开启。
3. 将外壳装上。
4. 锁上防盗螺丝。(图4)

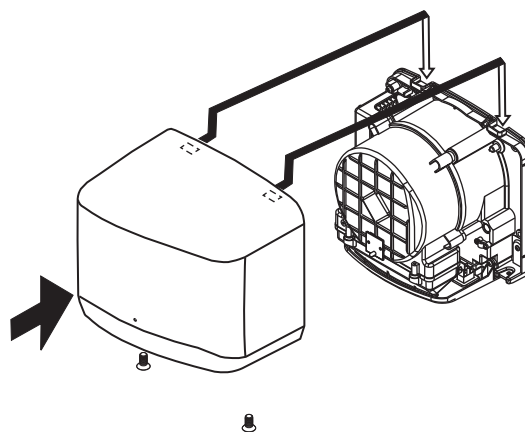


Fig.4
图4

C. Test Running

Steps	Results	Note
1. Shake the device slightly.	The device is firmly fixed.	There may be abnormal sounds or vibrations if the device is not firmly fixed.
2. Check power voltage.	Use rated voltage.	The device may be burnt or cause personal injury if not running under rated voltage.
3. Plug in.	Switch off external power.	Check the power if the display light is not on.
4. Put hands below the device for drying.	Air goes out at a high speed.	Check if hands are too far away from the sensor if there is no air going out.

C. 试运行

步骤	确认内容	检查及注意事项
1. 用手轻轻摇机器。	机器安装牢固无晃动。	机器安装不牢固工作时将会发生振动或异响。
2. 确认电源电压。	请使用额定电源。	电压使用不当，将会烧坏机器或造成人身事故。
3. 接通电源。	合上外接电源开关。	指示灯不亮时请检查电源。
4. 将手伸入进行干手。	高速风吹出。	如果没有风吹出来，请确认您的手是否离感应部位太远。

D. Operation Instructions

1. The machine starts operating automatically when user's hands are put approximately 20cm (7.78") below the sensor located next to air louver. Whenever the hands are moved out of sensing range, the machine will stop after approx. 0.5 sec.
2. The 0.2 sec time delay helps avoid false triggers by unexpected movements.
3. For safety reasons, the machine will immediately stop operating when it is used continuously over 45 seconds. The machine resumes to standard function when hands are moved away.

D. 操作说明

1. 当手靠近出风口下方约20cm内，本机即自动感应启动吹出高速风，使用者可自行调整双手与出风口的距离，直到吹干手为止。当手离开出风口约0.5秒，立即切断电源停止。
2. 感应器需感应0.2秒后才动作，以避免物体从感应区经过，造成不正常启动。
3. 连续操作超过45秒后，会自动切断电源，以避免因异物附着感应器使机器持续动作。

E. Important Notice

1. Turn off power supply prior to removing outer case.
2. Turn off power supply before maintenance or cleaning. If Casing is covered with dust, do not splash water onto it. Use only damp sponge or cloth to wipe dirt off.
3. Do not use eradicator, abrasive powder or oil, acid or alkali liquid detergent to clean casing.
4. Never try to put a small screw-driver or any other object into the holes of air Louver from outside. This might cause damage to the interior parts, and electric shock may occur.
5. Keep sensor case clean, never use any abrasive cleaning agent, rough surface articles, steel brush or sandpaper to rub the sensor case. This will make the sensor case dull and decrease the sensitivity of sensor.
6. Do not dry other objects except hands to ensure the safety.
7. To avoid damage to the machine or cause physical harm to the person, please keep the live parts away from water.
8. Do not bump the casing.
9. For indoor installation and use only.

E. 注意事项

1. 在维护或修理该机器时，请先关闭电源或拔下插头，以确保安全。
2. 请先关闭电源或拔下插头，然后再用柔软的湿布擦拭清洁干手机表面，切记绝对不可用水直接冲洗干手机。
3. 禁止使用去污粉、研磨粉及油类、酸性类、碱性类清洁剂清洁干手机表面。
4. 请勿将螺丝刀或任何细长尖锐物品伸出入风口内，因为这样可能导致内部零件损坏及触电等意外事件。
5. 请保持感应器透明罩表面干净无刮痕，不可用钢丝绒、砂纸或任何表面粗糙物清理表面，否则会减低感应器灵敏度。
6. 为确保人员安全，请避免作干手以外之动作。
7. 为防止零件损坏或人身伤害，请务必避免让水直接接触带电部件。
8. 请勿撞击外壳。
9. 仅供室内安装和使用。