

# Installation Instructions

## Soap Dispenser

Record your model number:

记录您的型号: \_\_\_\_\_

中文页面 14

**KOHLER®**

1526883-T2-A

# Thank You for Choosing KOHLER

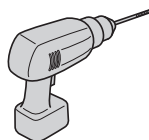
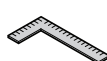
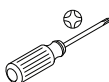
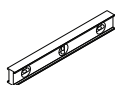
---

Need help? Contact our Customer Care Center.

KOHLER China Investment Co., Ltd No.158, Jiang Chang San Road,  
Jing'an District, Shanghai, PRC Post Code: 200436

## Tools and Materials

---



## Before You Begin

---

- Please read these instructions carefully to familiarize yourself with the required tools, materials, and installation sequences. Follow the sections that pertain to your particular installation. This will help you avoid costly mistakes. In addition to proper installation, read all operating and safety instructions.
- All information in these instructions is based upon the latest product information available at the time of publication. KOHLER China reserves the right to make changes in product characteristics, packaging, or availability at any time without notice.
- These instructions contain important care, cleaning, and warranty information - **please leave instructions for the consumer.**

# Technical Information

---

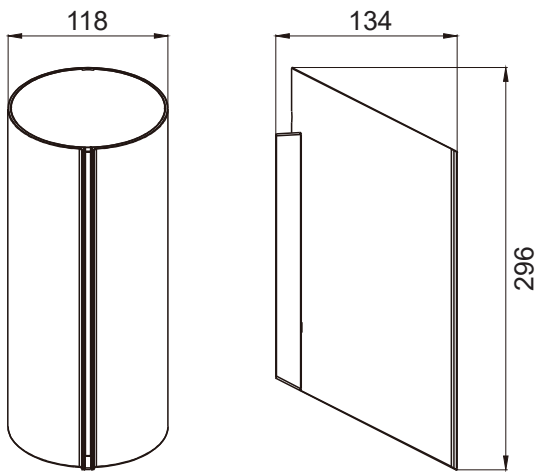
## Specification

Dimensions W × H × D	296 × 118 × 134 mm
Soap Bottle Capacity	920 ml
Battery	4 pcs of Alkaline AA (1.5 V)
Pre-Set Sensing Range	10 ± 3 cm
Room Temperature	5°C ~ 40°C
Sensing Delay Time	1 sec
Dispensing Time	1 sec
Dispensed Soap Quantity	About 1 ml
Applicable Liquid Soap Viscosity	1~3500 mPa·s
Battery Duration	15,000 cycles

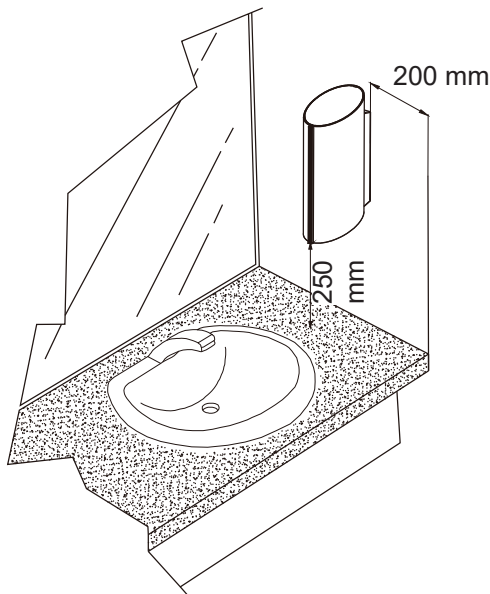
**NOTE:**  
Use only the liquid soap in the liquid soap dispenser. The dispenser may be blocked or unable to dispense if another form of soap is used.

# Rough-In Dimensions

Unit: mm



## Installation Standard

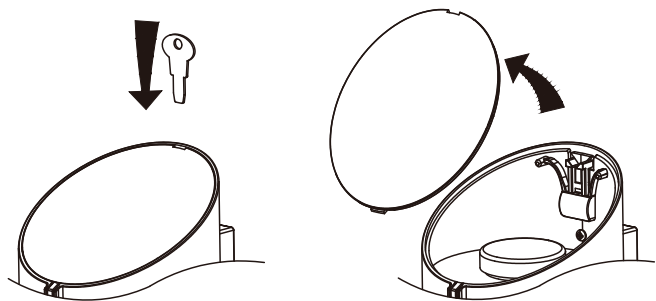


**NOTE:**

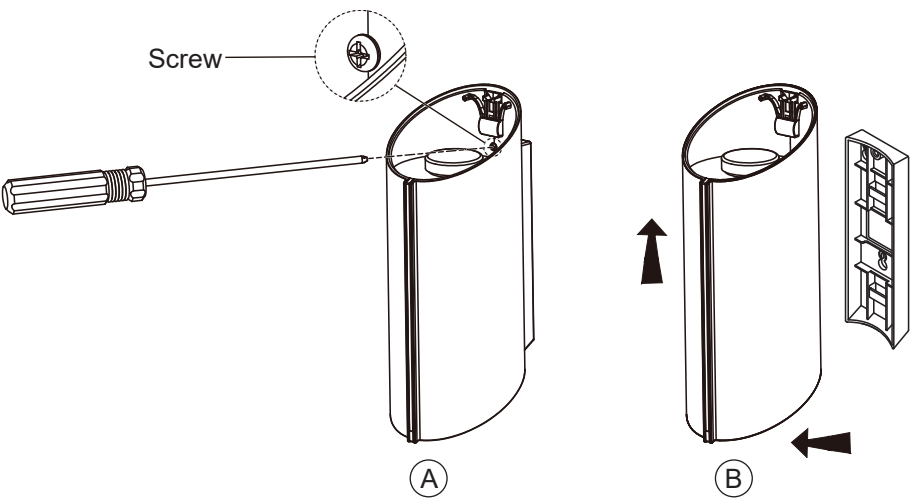
- Verify that the wall surface is smooth and clean.
- The distance between the sensor and countertop should be minimum of 250 mm. A shorter distance will continually trigger the sensor and cause damage.

# Installation Instructions

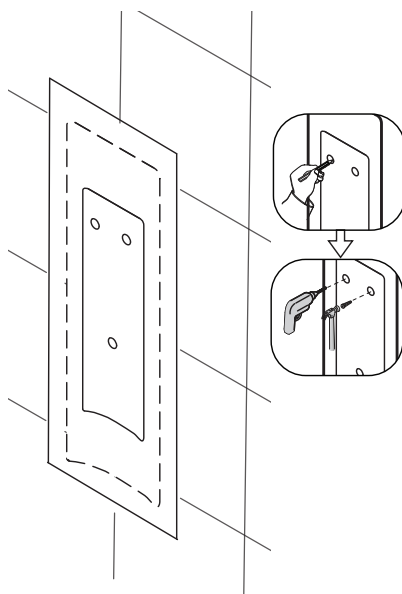
---



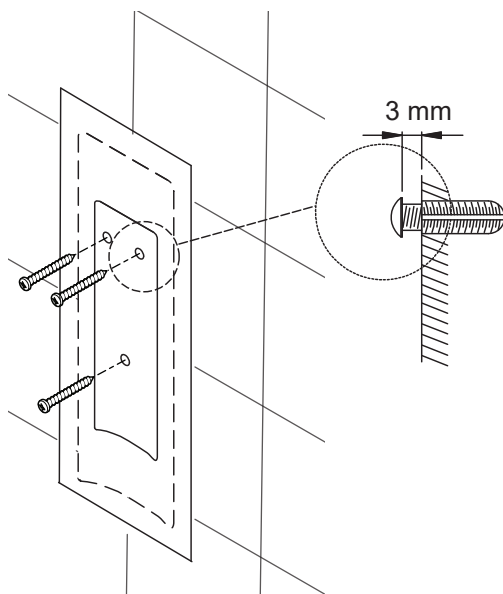
1. Use the provided key to unlock and remove the soap dispenser cover.
- 



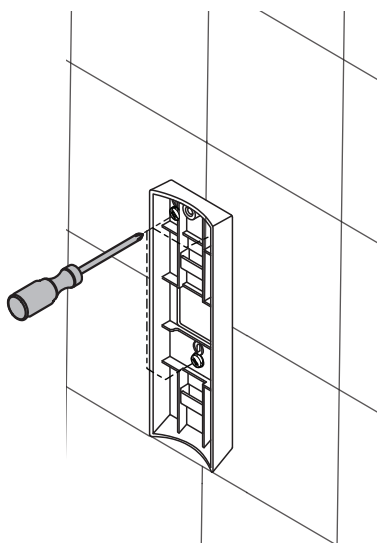
2. Use a screwdriver to remove the fixing screws. Separate the soap dispenser cover from the mounting bracket.
- 
3. Paste the template at an appropriate location on the wall (see installation standard page 4).



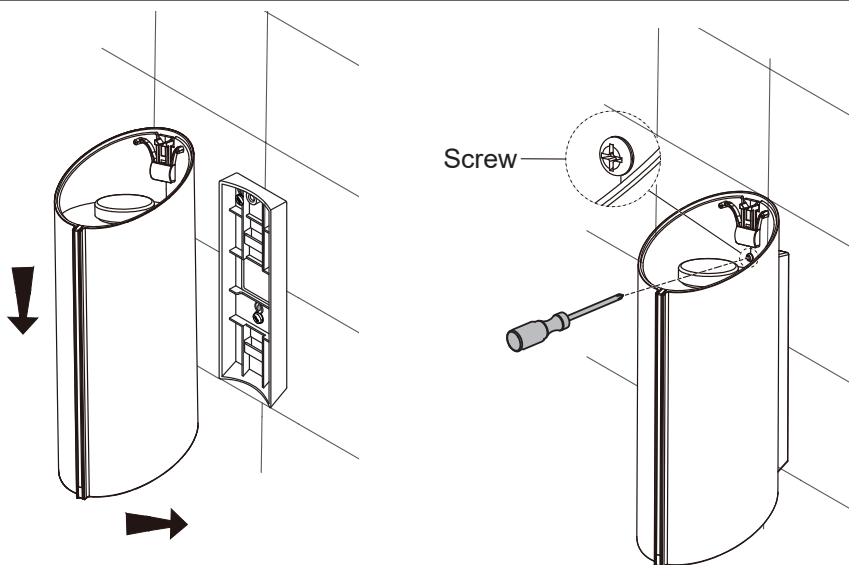
4. Mark the mounting hole locations. Drill three holes ( $\varnothing 6$  mm). Insert the plastic anchors.
- 



5. Install the three fixing screws into the plastic anchors. Tighten the screws, maintaining 3 mm space from the wall to hang the dispenser.



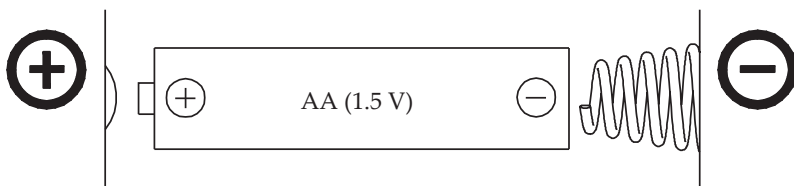
6. Hang the mounting bracket on the three screws by the back holes. Tighten the screws with a screwdriver.
- 



7. Install the soap dispenser on the mounting bracket and tighten the screw with screwdriver.

## Installation Check

---



**CAUTION:** Wrong polarity of battery will cause the product to malfunction.

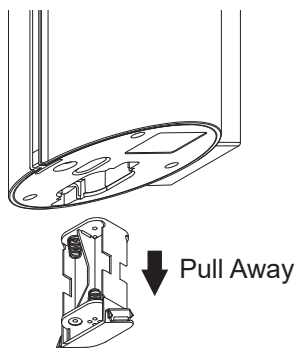
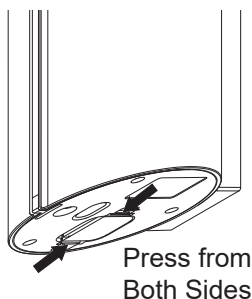
1. Verify that the soap dispenser is firmly secured to the wall.
2. Verify that the soap bottle cover is closed properly and no soap is leaked/spilled during refilling.
3. Use four new alkaline AA (1.5 V) batteries. Verify that the batteries are installed properly and in the right direction (with respect to +/- indication).
4. When the batteries are installed and the casing is closed, a level indicator will flash to indicate normal dispenser function.

## Service Instructions

---

### Battery Installation

---



1. Press the clips on both the sides of the battery box to release it.
2. Remove the battery box. Insert the four new alkaline AA batteries (1.5 V) into the battery box. Put the battery box back into original casing and close the cover.

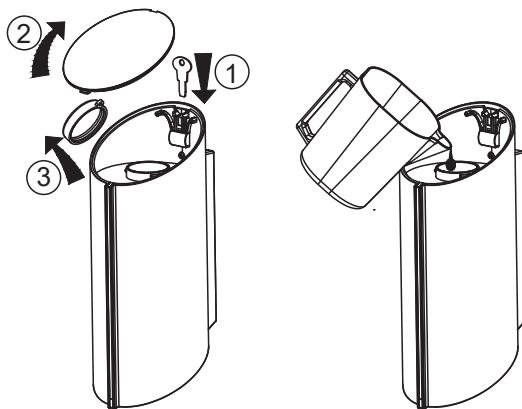
#### NOTE:

- Hold the battery box firmly to prevent it from falling.
- If the red LED flashes, it indicates that the batteries are low. Replace the batteries.



---

## Refill Liquid Soap



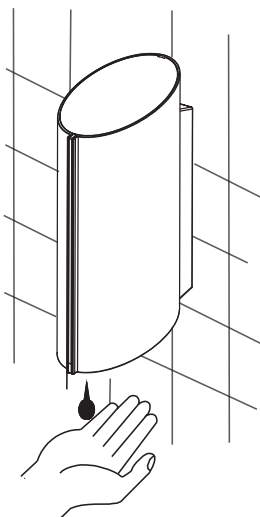
Use the provided key to unlock and open the soap dispenser cover. Remove the bottle stopper, and pour liquid soap into the bottle. If any soap spills over the outside of the bottle, clean it thoroughly. Insert the stopper and lock the cover.

### NOTE:

- When the dispenser is used for the first time, position the hand for several times repeatedly until the soap is dispensed.
- If the dispenser does not work, do not attempt any repair work. Call KOHLER China for professional assistance.

## User Instruction

---



Position the palm below the dispenser. When the white light turns ON, the soap is dispensed. Then the light turns OFF. If additional soap is needed, repeat the step above.

## Important Instructions to Customer

---

- Verify that no light source is aimed at the sensor from below.
- Verify that no light reflection occurs through any object within a distance of 250 mm below the sensor.
- Use the pure liquid soap only. Clean the soap bottle properly before each refill. Old soap residue will lead to malfunction and blockage.
- Do not dilute the liquid soap. Do not use the soap that contains granules. Follow the specified viscosity factor for liquid soap.
- Do not use eradicant, abrasive powder or oil, acid or alkali liquid detergent.
- Do not immerse the soap dispenser in water or clean it under running water. This will lead to short circuit.
- If the dispenser does not work and batteries have been replaced, do not attempt any repair work. Call KOHLER China for professional assistance.

## Troubleshooting

Sl.No	Problem	Solution
1	Main LED does not turn on.	Check batteries and verify they are new and properly inserted.
2	The white LED for the soap window flashes once every two seconds.	The soap level is low. Refill the soap bottle.
3	The red LED flashes.	The batteries are low. Replace all batteries.
4	Insufficient soap is released.	<ul style="list-style-type: none"><li>• The consistency of the soap lotion is too thick. Replace the soap lotion which is thinner in consistency.</li><li>• The soap is solidified or the nozzle is blocked. Use the unit for several times until the soap is dispensed normally.</li></ul>

# Description of Content of Hazardous Substances

## Reclaim Indication

When the product exceeds service life or is unable to use after repair, do not throw the product away in the normal trash. Please dispose the waste electronic parts through a qualified reclamation enterprise. Make sure the product is handled properly. Disposing of product must be done in accordance with the local or national government law.

## Statistics of Contents of Toxic or Hazardous Substances or Elements

Part Name	Toxic or Hazardous Substance or Elements					
	Lead (Pb)	Mercury (Hg)	Cadmi-um (Cd)	Hexava-lent Chromi-um (Cr(VI))	Polybro-minated Biphe-nyls (PBB)	Polybro-minated Diphenyl Ethers (PBDE)
Cover Assy.	<input type="radio"/>	<input type="radio"/>	<input type="radio"/>	<input type="radio"/>	<input type="radio"/>	<input type="radio"/>
Control Box Assy.	<input type="radio"/>	<input type="radio"/>	<input type="radio"/>	<input type="radio"/>	<input type="radio"/>	<input type="radio"/>
Battery Box Assy.	<input type="radio"/>	<input type="radio"/>	<input type="radio"/>	<input type="radio"/>	<input type="radio"/>	<input type="radio"/>
* Battery	<input type="radio"/>	<input type="radio"/>	<input type="radio"/>	<input type="radio"/>	<input type="radio"/>	<input type="radio"/>
Soap Bottle	<input type="radio"/>	<input type="radio"/>	<input type="radio"/>	<input type="radio"/>	<input type="radio"/>	<input type="radio"/>
Acces-sories	<input type="radio"/>	<input type="radio"/>	<input type="radio"/>	<input type="radio"/>	<input type="radio"/>	<input type="radio"/>

---

This form is prepared in accordance with SJ / T 11364.

○: Indicates that the substance in the material composition is below the high limits of the current requirements in GB/T26572.

X: Indicates that at least one of the homogeneous substances in the material composition is below the high limits of the current requirements in GB/T 26572.

\*: Indicates that parts need to buy separately.

**NOTE:** The information provided is based on the supplier data and Kohler inspection results. The product is designed not to hurt the environment. Under current technology, all hazardous materials have been used in the smallest amounts possible. KOHLER will strive to reduce the use of these hazardous materials used in this product.



The product “service life for environment protection” is 10 years; KOHLER Company will specify product service life based on product characteristics. The product “service life for environment protection” is only effective when the product is used as described in the product specification.

# 安装说明

## 皂液器

### 感谢您选择科勒

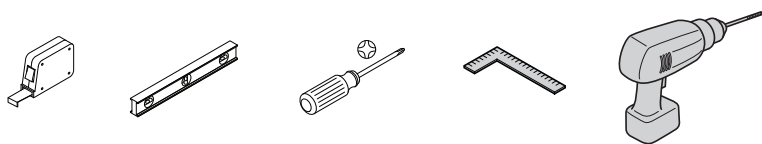
---

如需帮助, 请联系我们的客户服务中心。

科勒（中国）投资有限公司  
上海市静安区江场三路158号  
邮编：200436

### 工具和材料

---



### 开始之前

---

- 请仔细阅读使用说明, 了解所需工具、材料和安装顺序。请参考与您的特定安装相关的部分。这将帮助您避免代价高昂的错误。除了正确安装外, 请阅读所有操作和安全说明。
- 这些说明中的所有资料是按最新出版的产品资料编写而成。科勒（中国）公司保留任何时候不经通知即可改变产品特性、包装或可用性方面的权利。
- 这些说明书包含重要的护理、清洁和保修信息——**请将说明书留给消费者阅读。**

# 技术信息

---

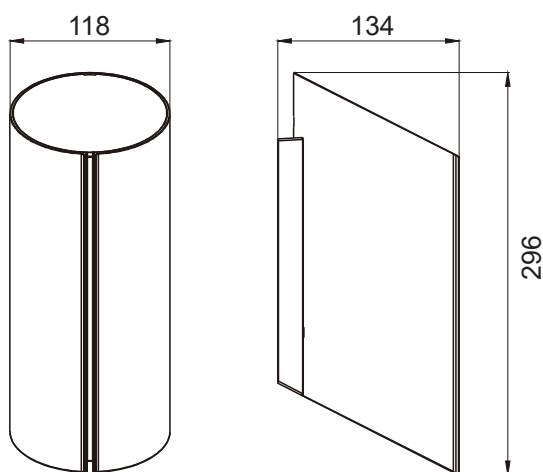
## 规格

尺寸 W × H × D	296 × 118 × 134 mm
皂液瓶容量	920 ml
电池	4 节碱性 AA (1.5 V)
出厂感应距离	10 ± 3 cm
工作温度	5° C ~ 40° C
感应延迟时间	1 秒
给皂时间	1 秒
出皂液量	约 1 ml
适用皂液粘度	1~3500 mPa • s
电池使用寿命	15,000 次

### 提示：

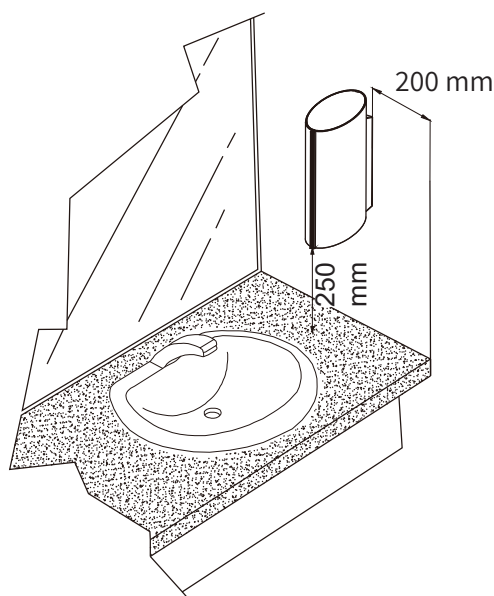
在液体皂液器中只使用液体型皂液。如果使用其他形式的皂液，给皂器可能被阻塞或无法给皂。

# 尺寸



单位:mm

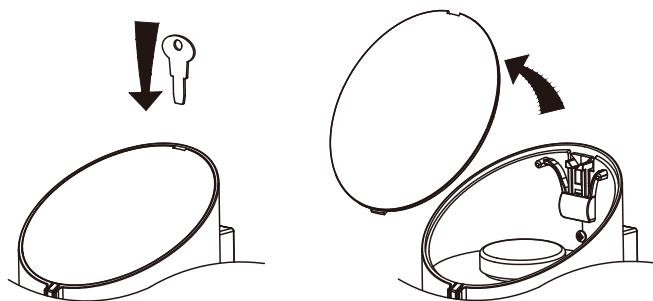
## 安装标准



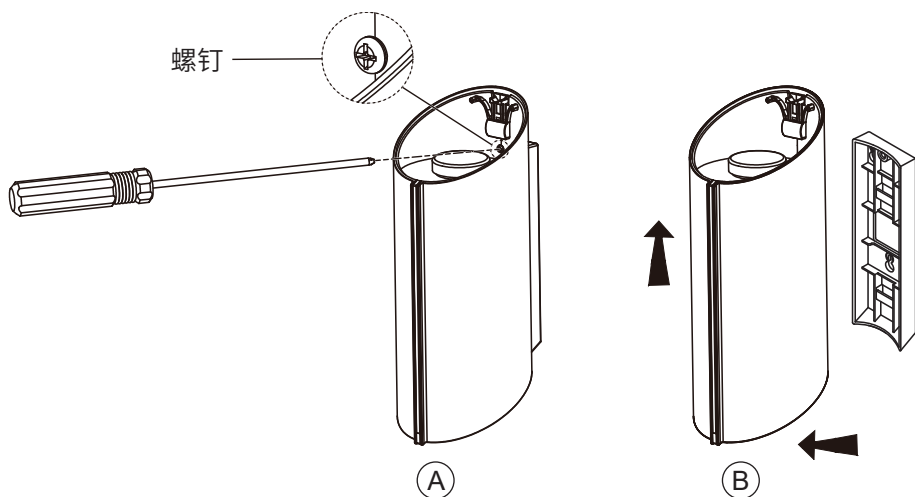
### 提示:

- 检查墙面是否光滑、干净。
- 传感器与台面之间的距离不小于 250 mm。更短距离将不断触发传感器并造成损害。



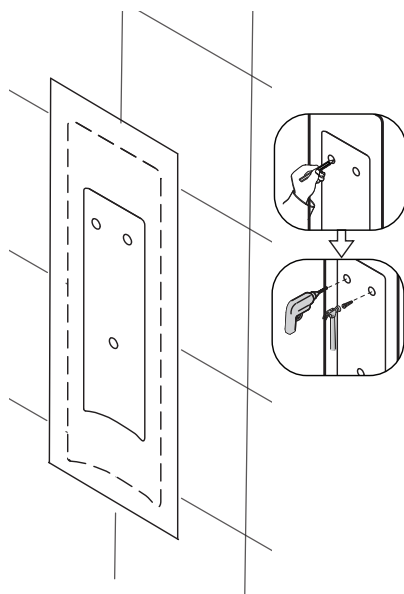


1. 使用提供的钥匙解锁并拆下皂液器盖。

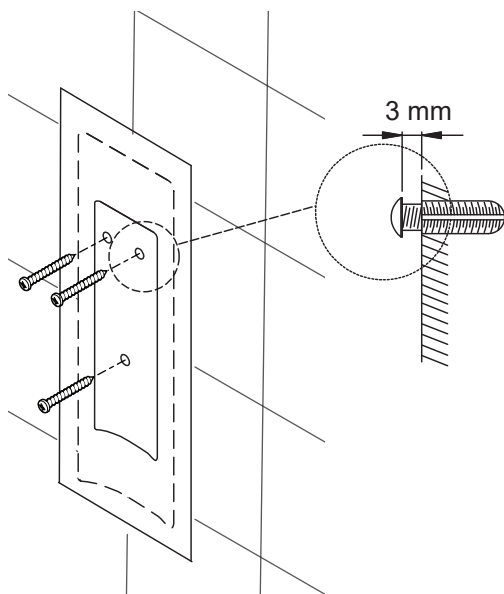


2. 使用螺丝刀拆卸固定螺钉。将皂液器外壳与安装支架分开。

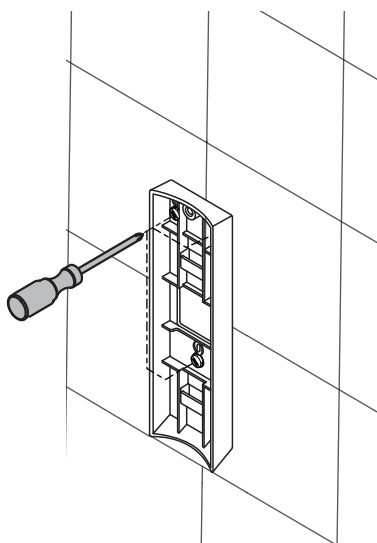
3. 将模板粘贴在墙上合适的位置（参见安装标准第 16 页）。



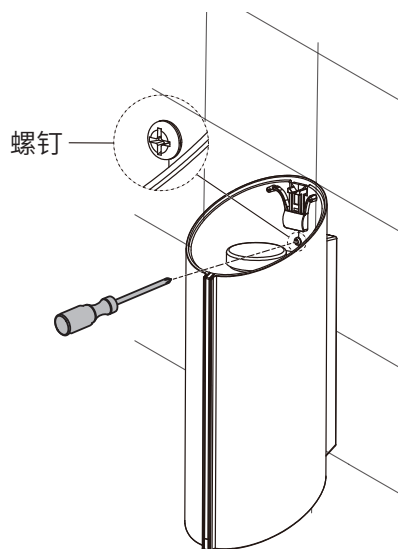
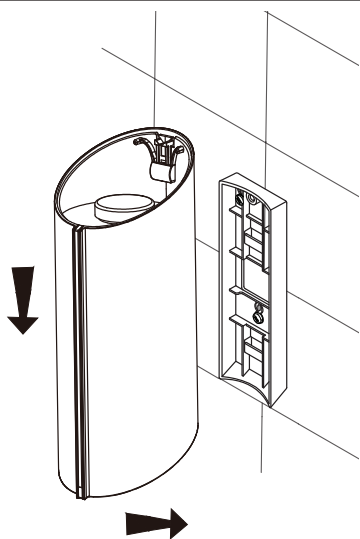
4. 标记安装孔位。打 3 个孔（直径 6 mm）。插入塑料锚。



5. 将三颗固定螺钉安装到塑料锚上。拧紧螺钉，与挂皂液器的墙壁保持 3 mm 的距离。

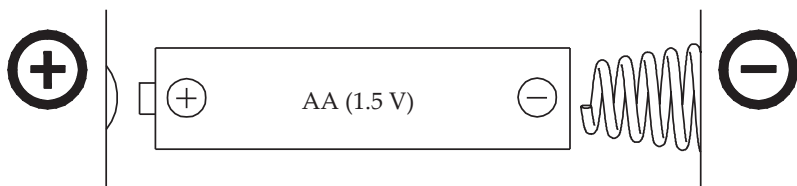


6. 将安装支架通过后孔挂在三颗螺钉上。用螺丝刀拧紧螺钉。



7. 将皂液器安装在安装支架上，拧紧螺钉。

## 安装检查

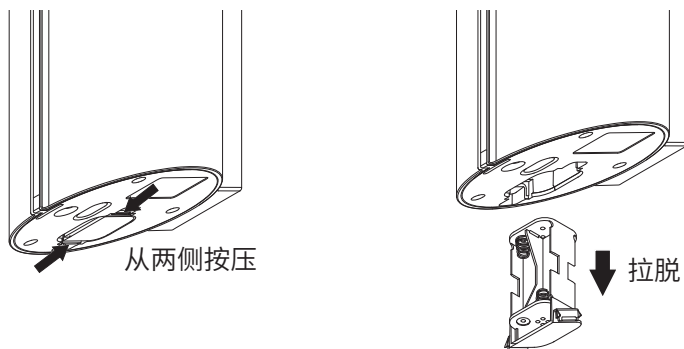


**⚠ 小心：电池极性错误会导致产品故障。**

1. 检查皂液器是否牢固固定在墙上。
2. 确认皂液瓶的瓶塞正确锁闭，灌装过程中没有皂液泄漏或溢出。
3. 使用四节新的碱性 AA (1.5 V) 电池。检查电池安装正确，方向正确（按照 +/- 指示放置）。
4. 当电池安装完毕，外壳闭合时，液位指示灯闪烁，指示给皂功能正常。

## 维修说明

### 电池安装

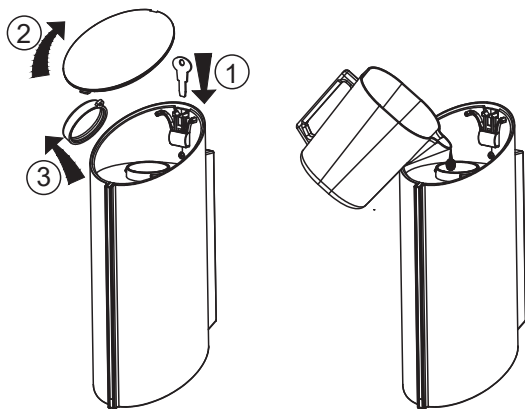


1. 按下电池盒两侧的卡子即可松开电池盒。
2. 拆下电池盒。将 4 节 AA 碱性电池 (1.5 V) 插入电池盒。把电池盒放回皂液器里，合上盖子。

#### 提示：

- 安牢电池盒，防止其掉落。
- 如果红色 LED 闪烁，表示电池电量不足。更换电池。

## 补充皂液



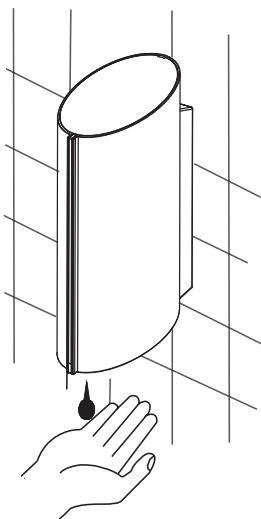
使用提供的钥匙解锁并打开皂液器盖。打开瓶塞，将皂液倒入瓶中。如果有皂液溢出瓶身，要彻底清洁。插入塞子并锁住盖子。

### 提示：

- 第一次使用皂液器时，将手反复放置几次，直到皂液给皂完成。
- 如果皂液器不工作，不要尝试任何修理工作。致电科勒（中国）公司寻求专业协助。

## 使用说明

---



将手掌放在皂液器下方。当白光亮起时，皂液滴下。然后白光熄灭。如果需要额外的皂液，重复上述步骤。

## 对客户的重要说明

---

- 确认没有光源从下方对准传感器。
- 确认传感器下方 250 mm 以内没有物体反射光线。
- 只使用纯皂液。每次充填皂液前，请适当清洗皂液瓶。旧的皂渣会导致堵塞和故障。
- 不要稀释皂液。不要使用含有颗粒的皂液。遵循指定的液体皂粘度系数。
- 禁止使用去污粉、研磨粉及油类、酸性类、碱性类清洁剂。
- 不要将皂液器浸入水中或用流动的水清洗。这会导致短路。
- 如果皂液器不工作，并且已经更换了电池，不要尝试任何修理工作。致电科勒（中国）公司寻求专业协助。

# 故障排除

序号	问题	解决方法
1	主 LED 不亮。	检查电池，确保它们是新的，并正确插入。
2	皂液窗的白色 LED 每两秒闪烁一次。	皂液位低。把皂液瓶装满。
3	红色 LED 闪烁。	电池电量低。更换所有电池。
4	释放的皂液不够。	<ul style="list-style-type: none"> <li>皂液太浓。更换较稀的皂液。</li> <li>皂液凝固或喷嘴堵塞。多次使用本皂液器，直到皂液正常分配。</li> </ul>

# 有害物质的名称及含量

## 回收提示

本产品超过使用期限或经过维修无法正常使用后，不应随意丢弃，请交由有废弃电器电子产品处理资质的企业处理，正确的处理方法请查阅国家或当地有关废旧电器电子产品处理的规定。

有害物质统计表

部件名称	有害物质名称					
	铅 (Pb)	汞 (Hg)	镉 (Cd)	六价铬 (Cr (VI))	多溴联苯 (PBB)	多溴二苯醚 (PBDE)
外壳组件	○	○	○	○	○	○
控制盒组件	○	○	○	○	○	○
电池盒组件	○	○	○	○	○	○
*电池	○	○	○	○	○	○
皂液瓶	○	○	○	○	○	○
安装配件类	○	○	○	○	○	○



本表格依据SJ/T 11364-2014 的规定编制。

○：表示该有害物质在该部件所有均质材料中的含量均在GB/T 26572现行有效版本规定的限量要求以下。

X：表示有害物质至少在该部件的某一均质材料中的含量超出GB/T 26572现行有效版本规定的限量要求。

\*：表示需另购部件。

**注：**本表格提供的信息是基于供应商提供的数据及科勒公司的检测结果。本产品应用环保设计理念，在当前技术水平下，所有有害物质或元素的使用已经控制到了最低程度，科勒公司会继续努力通过改善现有技术来减少这些物质的使用。



本产品的“环保使用期限”为10年，科勒公司根据产品设计特性指定该期限。只有在本产品使用说明书所述的正常情况下使用本产品时，“环保使用期限”才有效。





Kohler.com

THE BOLD LOOK  
OF **KOHLER**®

©2022 Kohler Co.



1526883-T2

1526883-T2-A