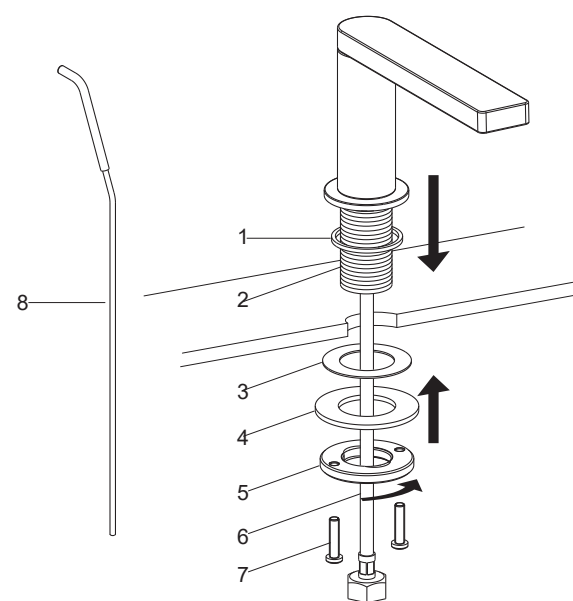


73060T-4

安装步骤

INSTALLATION

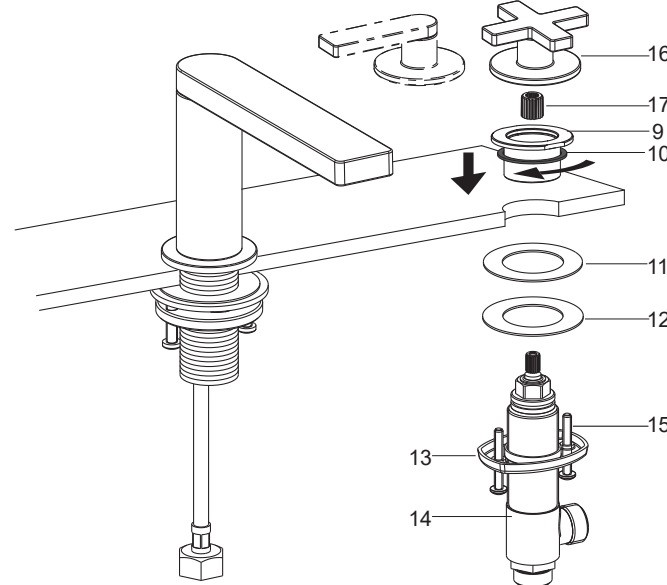


如何安装出水口

将垫片(1)装在龙头底部凹槽中，将软管(6)和牙管(2)插入脸盆中孔。

调整好水龙头的位置。从脸盆下方将垫片(3)、钢垫(4)和固定环(5)套在牙管上，并旋紧固定环，锁紧螺钉(7)以固定水龙头。

将提拉杆(8)插入水龙头后侧小孔中。



How to Install the Spout

Install the washer(1) into the groove at the bottom of the faucet. Insert the hose(6) and shank(2) into the central hole of the lavatory.

Position the faucet, place the washer(3), steel washer(4) and threaded ring(5) onto the shank, and then screw the threaded ring. Tighten the screws(7) to secure the faucet.

Insert the lift rod(8) to the hole at the rear of the faucet.

KOHLER®

SERVICE PARTS

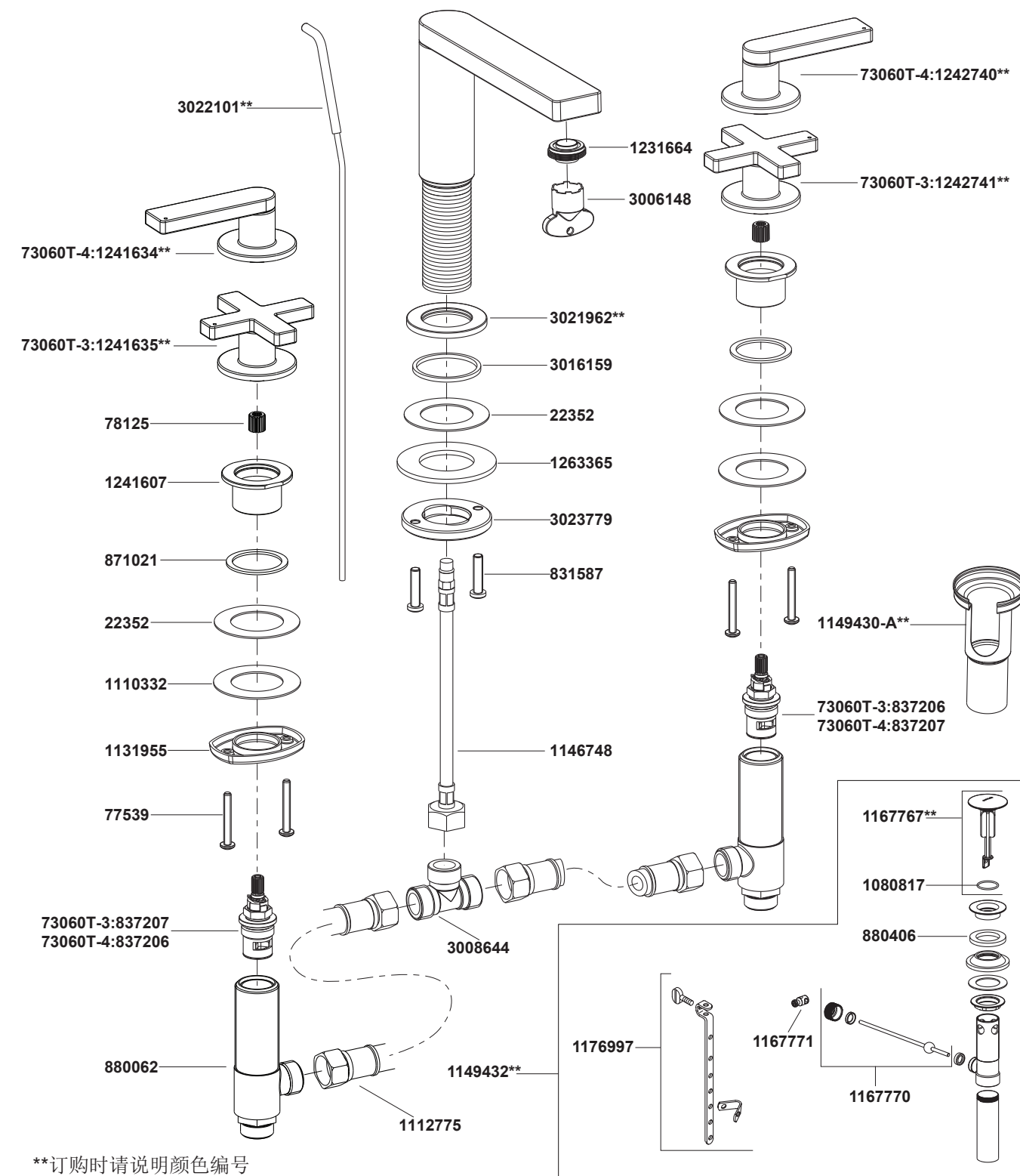
零件图

柏诗

COMPOSED

Widespread Lavatory Faucet

73060T-3 8寸脸盆龙头 - 十字把手
73060T-4 8寸脸盆龙头 - 杆型把手



**订购时请说明颜色编号

**Color code must be specified when ordering

使用说明	HANDLE OPERATION
逆时针旋转右把手为开，顺时针旋转左把手为开。	Turn on the left handle clockwise is for hot water, turn on the right handle counter-clockwise is for cold water.
清洗说明	CLEANING INSTRUCTIONS
适用于所有加工处理过的表面：以中性肥皂水清洗镀层表面，再以干净的软布彻底擦干整个表面，许多清洁剂，比如氨水、去污粉及洁厕灵等，会对电镀表面造成伤害，切忌使用。	All Finishes: Clean the finish with mild soap and warm water. Wipe entire surface completely dry with clean soft cloth. Many cleaners may contain chemicals, such as ammonia, chlorine, toilet cleaner etc. which could adversely affect the finish and are not recommended for cleaning.
有磨损性的清洁用具或清洁剂也不可使用于科勒牌的水龙头及其配件上。	Do not use abrasive cleaners or solvents on Kohler faucets and fittings.

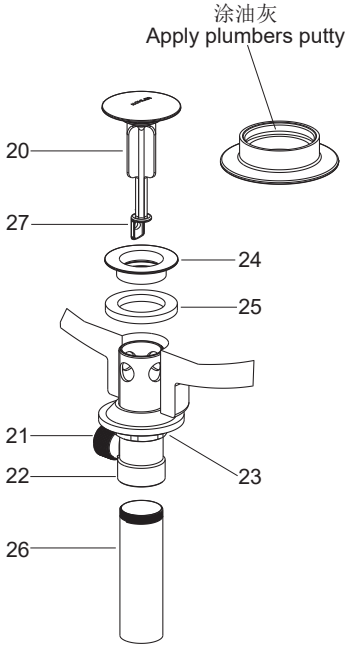
如何安装阀体和把手	How to Install the Valve Bodies and Handles
先从阀体组件(14)上取下装饰盖底座(9)和橡胶垫片(10)。	Remove the escutcheon base(9) and rubber washer(10) from each valve body(14).
确保垫片(11)、钢垫(12)和安装环(13)在阀体上。	Be sure the washer(11), steel washer(12) and threaded ring(13) on the valve body.
从脸盆下方将阀体组件装入脸盆安装孔(注：带红色标志的阀体组件装在左侧)。	From the underside of the lavatory, install the valve body into the mounting hole of lavatory(NOTE: the valve body with red mark should be installed on the left side).
将橡胶垫片(10)装到装饰盖底座底部凹槽中，将装饰盖底座装入阀体组件。	Put the rubber washer(10) into the bottom groove of the escutcheon base. Tighten the escutcheon base onto the valve body.
根据软管安装需要适当调整阀体出水口朝向。用螺丝刀拧紧螺钉(15)以固定阀体组件。	Adjust the outlets of side bodies to connect hoses easily. Secure the side bodies by tightening screws(15) with screwdriver.
把齿套(17)按在阀轴上。确保阀芯处于关闭状态。将把手组件(16)安装到装饰盖底座(9)上。 注意： 带有红色标记的把手组件装在左侧，且安装前阀芯处于关闭状态。	Press the adapters(17) on the valve stems. Ensure the valves are closed. Place the handle kits(16) onto the escutcheon bases(9). NOTE: The handle kit with red mark should be installed on the left side).
如何连接软管	How to Connect the Hoses
将T型接头组件(19)接到软管(6)上，用软管(18)将T型接头与两边的阀体组件(14)连接。	Thread the tee connector assy(19) into the hose(6). Connect the tee connector to the side bodies(14) with hoses(18).

如何安装提拉排水组件

将止水塞(20)、法兰盘(24)、垫片(25)及尾管(26)从排水本体(22)上取下。在尾管螺纹处须缠绕足以密封的密封胶带或涂合适的密封胶，装回到排水本体。把排水本体组件从脸盆下方插到脸盆中，排水杆口(21)朝后方。把法兰盘带垫片旋入到排水本体中，从下方用手拧紧锁紧螺母(23)。

注意：如果需要，可直接在法兰盘(24)底面沿周围涂一圈密封油灰，或其他密封剂，而不使用垫片(25)。

把止水塞(20)放入排水本体中，调整止水塞末端的洞口(27)使其靠近并对正排水杆的洞口。



How to Install the Drain

Remove the stopper(20), flange(24), washer(25) and tailpiece(26) from drain body(22). Supply enough tape or sealant to tailpiece thread. Reinstall the tailpiece. Insert the drain body kit into the lavatory from underside, and make sure the drain lever hole(21) facing to the back of the lavatory. Screw the flange with washer into the drain body. Tighten the locknut(23) by hand from the underside of the lavatory.

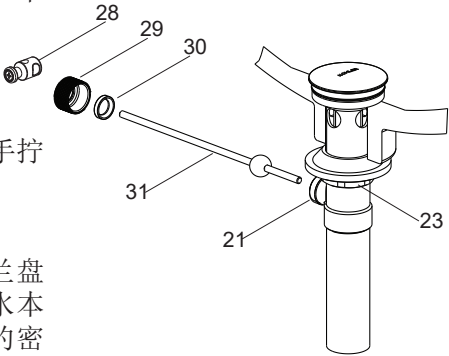
NOTE: If needed, apply a ring of plumbers putty around the underside of the drain flange(24), instead of using washer(25).

Place the stopper(20) into drain body aligning the flat side of stopper hole(27) with the drain lever hole.

将接头(28)及固定螺母(29)取下，把塑料垫圈(30)及固定螺母装在球杆(31)上，把球杆组件插入排水杆的洞口中并穿过止水塞，拧紧固定螺母。

确保球杆(31)指向脸盆后方，用扳手拧紧排水本体上的锁紧螺母(23)。

注意：在锁紧螺母拧紧后，如法兰盘使用密封油灰，则不可以调整排水本体的位置，否则会破坏油灰密封的密封性。同时去除多余油灰。



Remove the latch(28) and retaining nut(29). Fit the plastic washer(30) and retaining nut onto the ball lever(31). Insert the ball lever assembly into the drain lever hole and through the stopper hole. Tighten the retaining nut.

Be sure that the ball lever(31) points to the back of the lavatory, tighten the locknut(23) on the drain body by wrench.

NOTE: Do not reposition the drain if plumbers putty applied after the locknut is tightened, or you may break the putty seal. Wipe away excess plumbers putty.

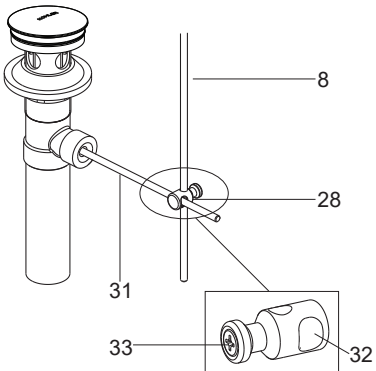
如何安装提拉杆组件

根据所选脸盆尺寸，选择排水器与水龙头提拉杆的连接方式。

方式一：选用接头(28)

接头大孔(32)套到球杆(31)上，将提拉杆下部插入接头小孔中。

将球杆下推到排水器全开位置。锁紧接头上的螺钉(33)。



How to Install the Lift Rod Kit

Select the connection of the drain and the lift rod according the dimension of lavatory.

Way 1: Select the latch(28)

Insert the ball lever rod(31) into the bigger hole(32) of the latch. Insert the lift rod into the other hole of latch.

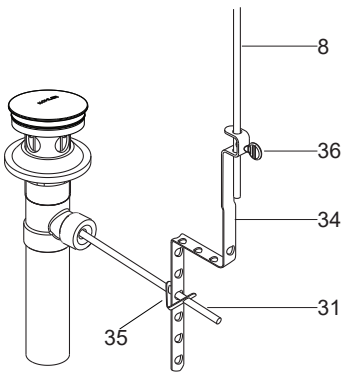
Push the ball lever rod down to the open position. Tighten the screw(33) on the latch.

方式二：选用联动组件(34, 35 & 36)

根据提拉杆的长度，折弯联杆(34)。

用V形夹(35)将联杆连到球杆组件上，将提拉杆(8)插到联杆的孔中。

将球杆(31)下推到排水器全开位置。拧紧手捻螺丝(36)。



Way 2: Select the link kit(34, 35 & 36).

According to the lift rod length, bend the link(34).

Connect the link onto ball lever rod with “V” clip(35). Slide lift rod(8) into the hole on link.

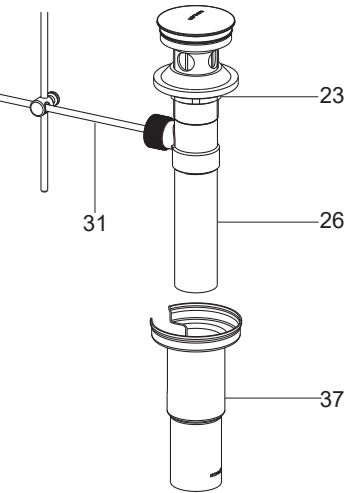
Push the ball lever rod(31) down to the open position. Tighten thumb screw(36).

如何安装排水器装饰罩

排水器装饰罩(37)的缺口部分朝后，穿过尾管(26)和球杆(31)向上滑动，直到防松螺母(23)的位置。

注意：必须卡紧装饰罩，防止滑动。

把尾管接上存水弯，尾管须插入存水弯25mm到40mm。



How to Install the Drain Shroud

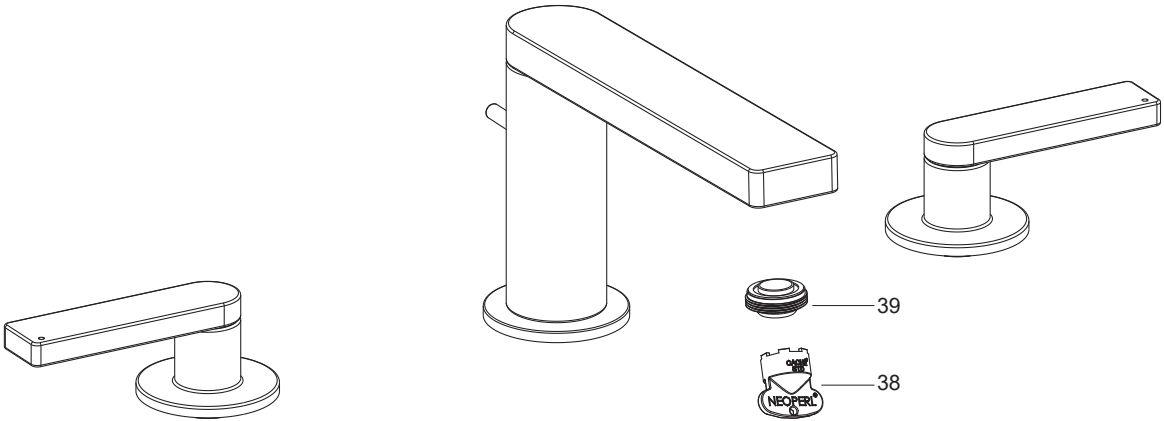
Slide drain shroud(37) with slot facing toward the back, up over tailpiece(26) and around ball lever rod(31), until contact with locknut(23) on the drain.

NOTE: At this point, tighten the drain shroud.

Connect the tailpiece to the trap. The tailpiece should extend 25mm to 40mm into the trap.

安装结果检查

INSTALLATION CHECKOUT



检查并确保所有的衔接处都已拧紧。确保手柄处于关闭位置。

打开排水系统和主要供水源，检查并修理有漏水的接口。

用工具(38)将起泡器(39)拆下，打开水龙头，让水流过出水口一分钟以清除杂质。

冲洗起泡器，关闭水龙头，重新装回起泡器。

Ensure that all connections are tight. Ensure that the handles are in the off position.

Open the drain. Turn on main water supply and check for leaks. Repair as required.

Remove aerator(39) by key(38). Turn on the faucet handles and run hot and cold water through spout for about one minute to remove any debris.

Remove any debris from aerator. Shut faucet off and reinstall aerator.