



**7236**  
72" x 36" alcove bath  
**K-1159-R**

**Features**

- Generous length provides a spacious bathing area
- Hourglass shape adds style and elegance to your bathroom
- Integral lumbar support and armrests offer extra comfort while bathing
- Integral flange helps prevent water from seeping behind wall and simplifies alcove installation

**Material**

- Acrylic

**Installation**

- Right drain
- Alcove

**Recommended Products/Accessories**

K-1491 Bath/Whirlpool Pillow  
K-1601 Bath/whirlpool footstop, removable  
K-7265 Brass toe tap bath drain  
K-23726 Drain treatment



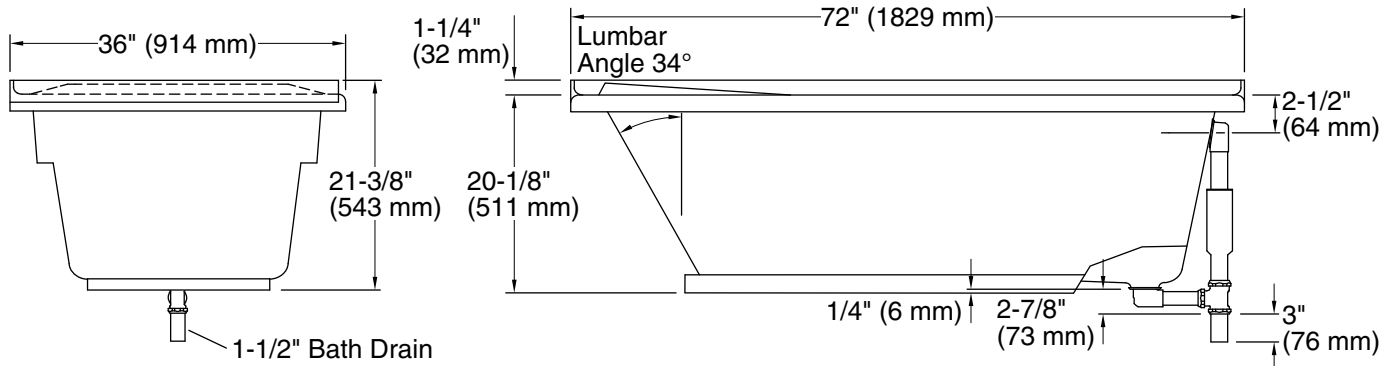
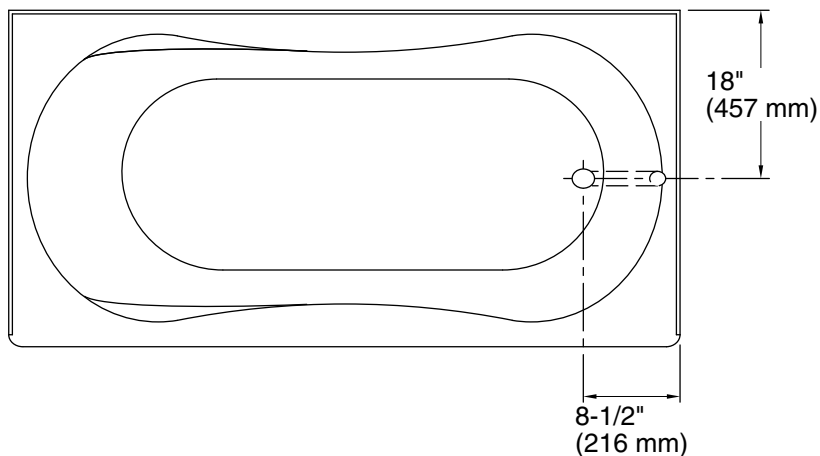
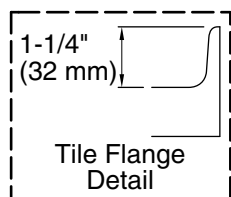
**Codes/Standards**

CSA B45.5/IAPMO Z124

**KOHLER® Plastic Baths and  
Receptors Lifetime Limited Warranty**

See website for detailed warranty information.

No change in measurements if connected with drain illustrated. (K-11677)



## Technical Information

All product dimensions are nominal.

Drain location:	Right
Basin area, bottom:	55" x 21" (1397 mm x 533 mm)
Basin area, top:	65" x 26" (1651 mm x 660 mm)
Weight:	52 lbs (23.6 kg)
Minimum floor load:	38 lbs/ft² (185.5 kg/m²)
Water depth:	15" (381 mm)
Water capacity:	72 gal (272.5 L)
Minimum flat for door:	2-1/4" (56 mm)

## Notes

Measure your actual product for rough-in details.

Install this product according to the installation instructions.

The hot water supply should be 70% of the capacity of the bath or greater. Installations will vary.

Bath may require shimming if installing an apron.