

Features

- Lever handle controls standard faucet; knob handle operates hose outlet
- For use with cold water line only
- 5 inch (127 mm) spout reach
- 6.8 gpm (25.8 lpm) maximum flow rate at 43.5 psi (3.0 bar)
- Coordinates with other products in the July collection

Material

- Premium material construction for durability and reliability
- KOHLER finishes resist corrosion and tarnishing

Installation

- G 1/2 inlet and outlet
- Wall-mount



Codes/Standards






None Applicable

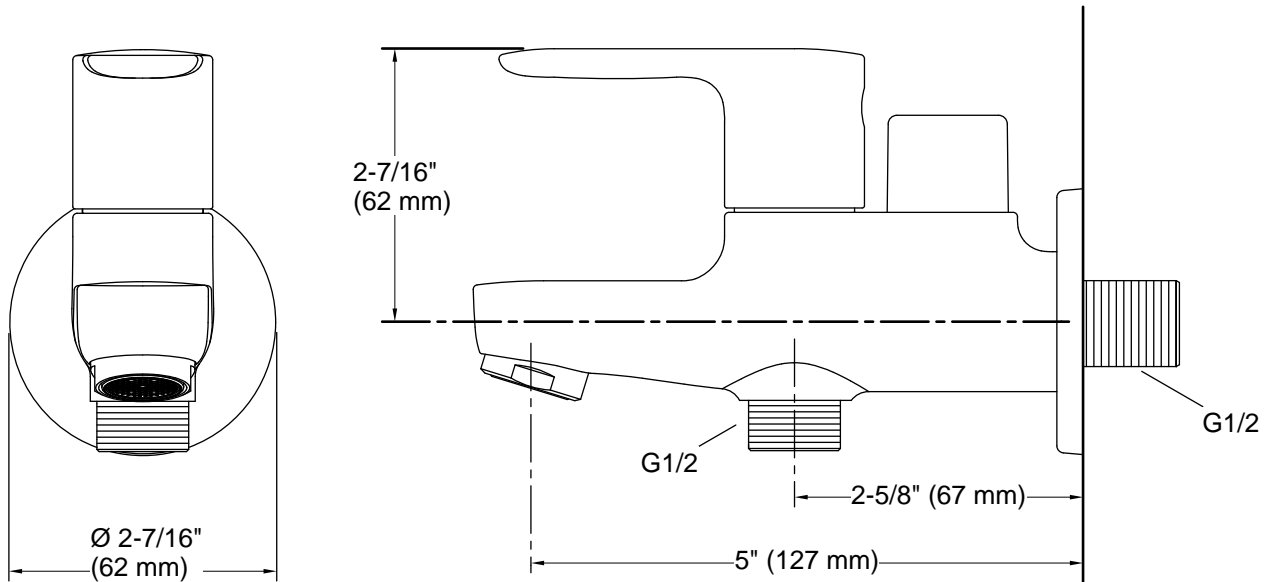
KOHLER® India Faucet, Sanitaryware and Bathing Products Limited Warranty

See website for detailed warranty information.

Available Colors/Finishes

Color tiles intended for reference only.

Color	Code	Description
	CP	Polished Chrome
	AF	Vibrant® French Gold
	BN	Vibrant® Brushed Nickel
	BV	Vibrant® Brushed Bronze
	RGD	Vibrant Rose Gold



Technical Information

All product dimensions are nominal.

Drain included: No

Notes

Install this product according to the installation guide.