



Brive®
Quiet-Close™ elongated toilet seat
K-1877IN

Features

- Elongated closed-front seat with lid
- Quiet-Close™ functionality to prevent seat from slamming

Material

- Plastic construction



Codes/Standards

None Applicable


**KOHLER® India Faucet,
Sanitaryware and Bathing
Products Limited Warranty**

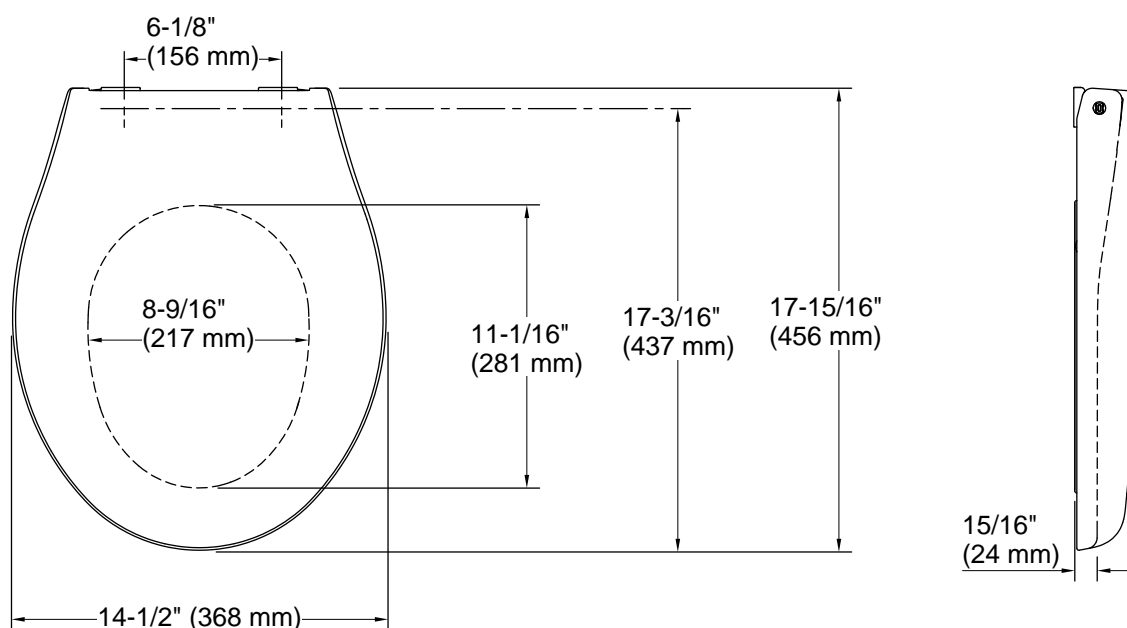
See website for detailed warranty
information.

Available Colors/Finishes

Color tiles intended for reference only.

Color	Code	Description
-------	------	-------------

	0	White
---	---	-------



Technical Information

All product dimensions are nominal.

Seat shape type: Round-front
Seat front type: Closed-front
Seat hinge type: Check
Seat-mounting holes: 6-1/8" (155 mm)

Notes

Install this product according to the installation guide.