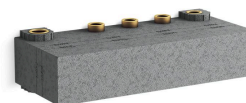


Features

- High-flow thermostatic mixing valve
- Mechanically controlled thermostatic mixing valve maintains outlet temperature throughout shower experience
- Up to 8 gpm (30.3 lpm) flow rate at 45 psi (3.1 bar) with maximum flow of 7 gpm (26.5 lpm) from one outlet
- G 3/4 female inlet connections
- G 1/2 female outlets
- Service stops with integral filters
- Antiscald protection
- Integrated adjustable high-temperature limit stop to control maximum water temperature
- Adjustable comfort setting (preset at approximately 104°F)
- Includes optional flow restrictor, limiting total flow to 1.75 gpm (6.6 lpm), for installations where water conservation or CEC compliance is desired

**Codes/Standards**

None Applicable

Material

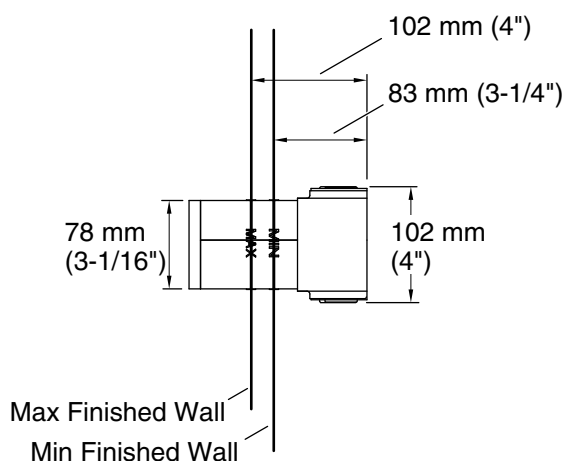
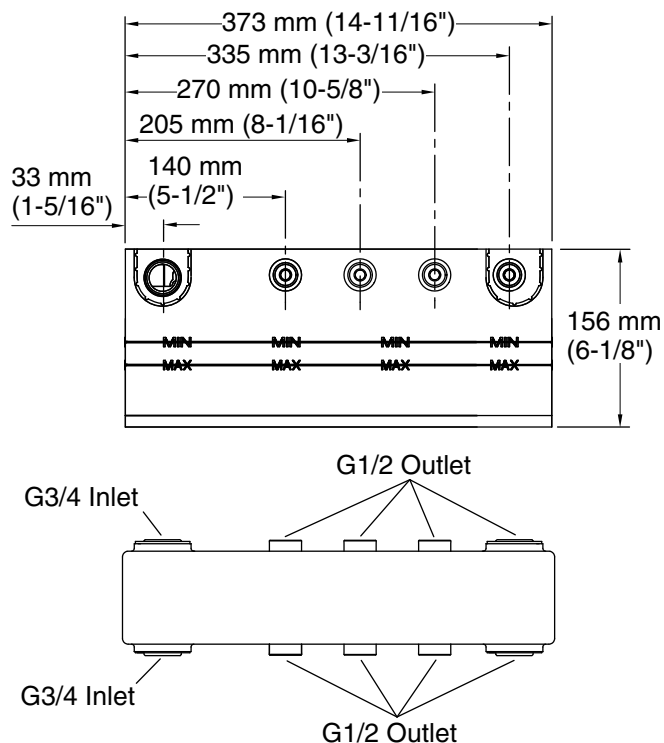
- Cast dezincification-resistant brass body provides long term reliability and resistance to aggressive water conditions

KOHLER® Faucet Lifetime Limited Warranty

See website for detailed warranty information.

Installation

- Requires four-outlet thermostatic valve control panel trim with recessed push buttons (sold separately)
- Fully-serviceable from the front of the valve



Technical Information

All product dimensions are nominal.

Spout:

Shower Valve:

Flow Rate (Max) @ 45 psi

8 gal/min (30.3 l/min)

Pressure:

45 psi (3.1 bar)

Notes

Install this product according to the installation instructions.

For use with showerheads or handsprays rated at 0 gal/min (0 l/min) or higher.