

Features

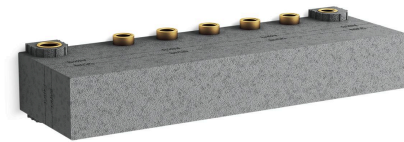
- High-flow thermostatic mixing valve
- Mechanically controlled thermostatic mixing valve maintains outlet temperature throughout shower experience
- Up to 13.3 gpm (50 lpm) flow rate at 45 psi (3.1 bar) with maximum flow of 10.5 gpm (39.5 lpm) from one outlet
- G 3/4 female inlet connections
- G 1/2 female outlets
- Antiscald protection
- Integrated adjustable high-temperature limit stop to control maximum water temperature
- Adjustable comfort setting (preset at approximately 37°C)

Material

- Cast dezincification-resistant brass body provides long term reliability and resistance to aggressive water conditions

Installation

- Requires six-outlet thermostatic valve control panel trim with recessed push buttons (sold separately)
- Fully-serviceable from the front of the valve

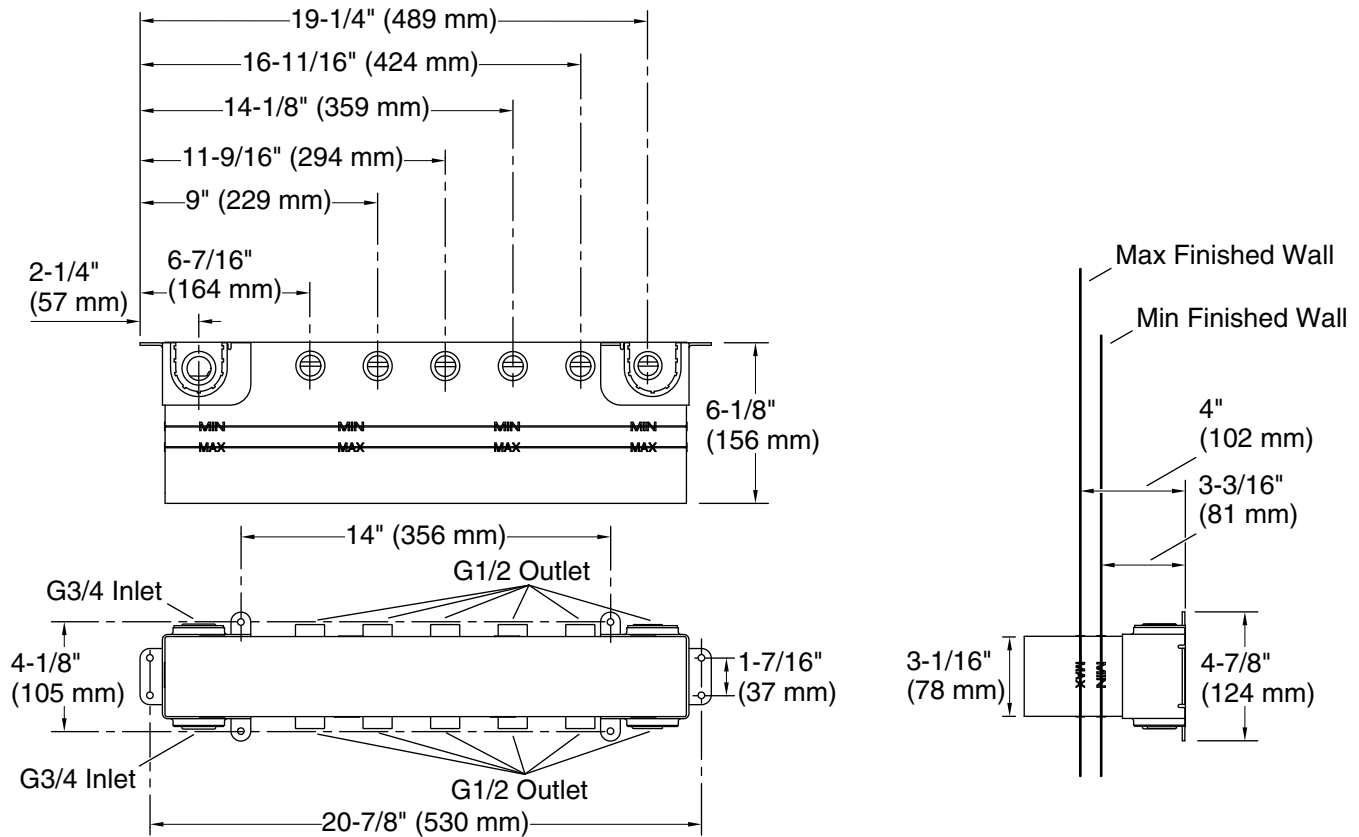


Codes/Standards

ASME A112.18.1/CSA B125.1

KOHLER India Faucet Limited Warranty

See website for detailed warranty information.



Technical Information

All product dimensions are nominal.

Notes

Install this product according to the installation instructions.