



Span™

Wash-down half-stall 0.5 – 3.8 lpf urinal, rear spud

K-26475IN-ER

Features

- Washdown flushing system
- Contemporary design is perfect for public bathrooms
- 0.125 – 1.0 gpf (0.5 – 3.8 lpf)
- Delivers dependable water-saving performance and added hygiene
- Smooth contours make cleaning fixture fast and easy
- Extended lip helps keep floor cleaner
- Optimized interior design virtually eliminates splashing
- G 1/2 (13 mm) rear spud
- Fully skirted trapway simplifies cleaning
- Rigid snap-in stainless steel strainer increases drain flow speed and eliminates shifting
- Antimicrobial finish inhibits the growth of mold-, mildew-, stain-, and odor-causing bacteria on the fixture surface. This product does not protect users against bacteria, viruses, or other disease organisms. Always clean and wash this product thoroughly before and after each use
- Requires wall-mount faceplate (sold separately)
- Requires urinal sensor for touchless functionality (sold separately)

Installation

- Trapway secures urinal to wall, eliminating bolts for a faster installation
- Wall-mount



Codes/Standards

None Applicable


KOHLER® One-Year Limited Warranty

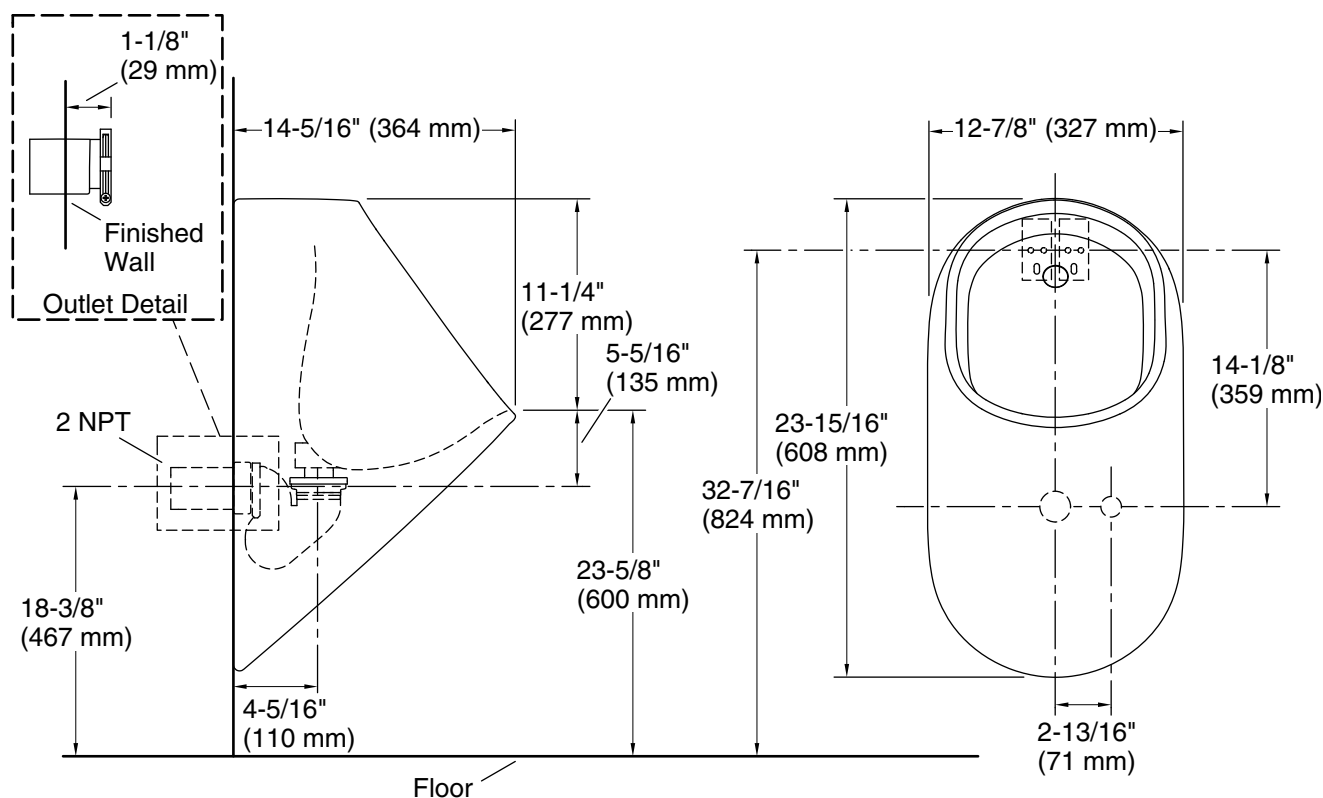
See website for detailed warranty information.

Available Colors/Finishes

Color tiles intended for reference only.

Color	Code	Description
-------	------	-------------

	0	White
---	---	-------



Technical Information

All product dimensions are nominal.

Flush Type: Washdown
Min. Water per Flush: 0.125 gpf (0.5 lpf)
Max. Water per Flush: 0.125 gpf (0.5 lpf)

Designed for the above water use when installed with a water-saving flushometer.

Notes

Install this product according to the installation instructions.